

134°0'0"W

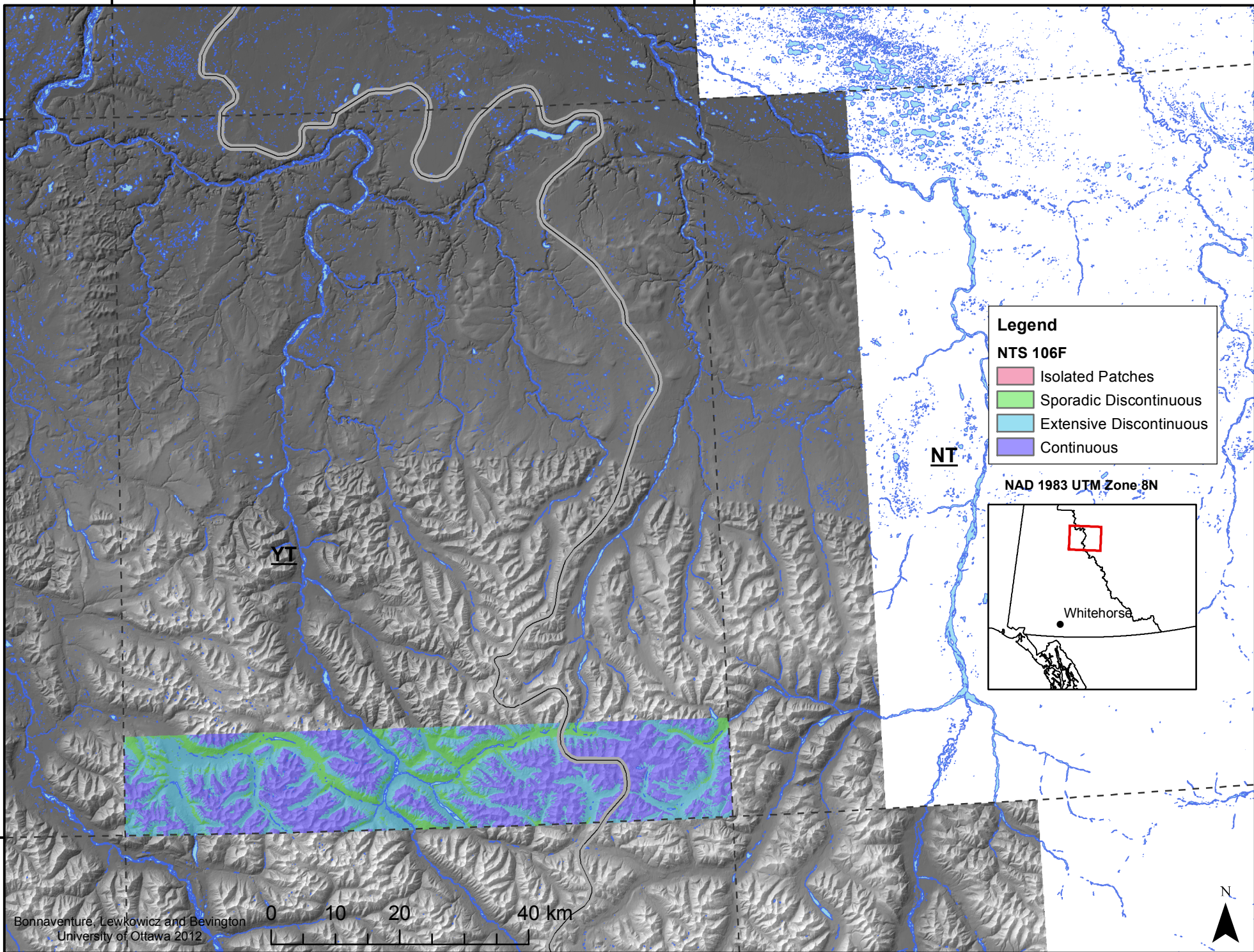
132°0'0"W

66°0'0"N

65°0'0"N

66°0'0"N

65°0'0"N



Legend

NTS 106F

- Isolated Patches
- Sporadic Discontinuous
- Extensive Discontinuous
- Continuous

NAD 1983 UTM Zone 8N

Whitehorse

Bonnaventure, Lewkowicz and Bevington
University of Ottawa 2012

0 10 20 40 km

134°0'0"W

132°0'0"W

