

142°0'0"W

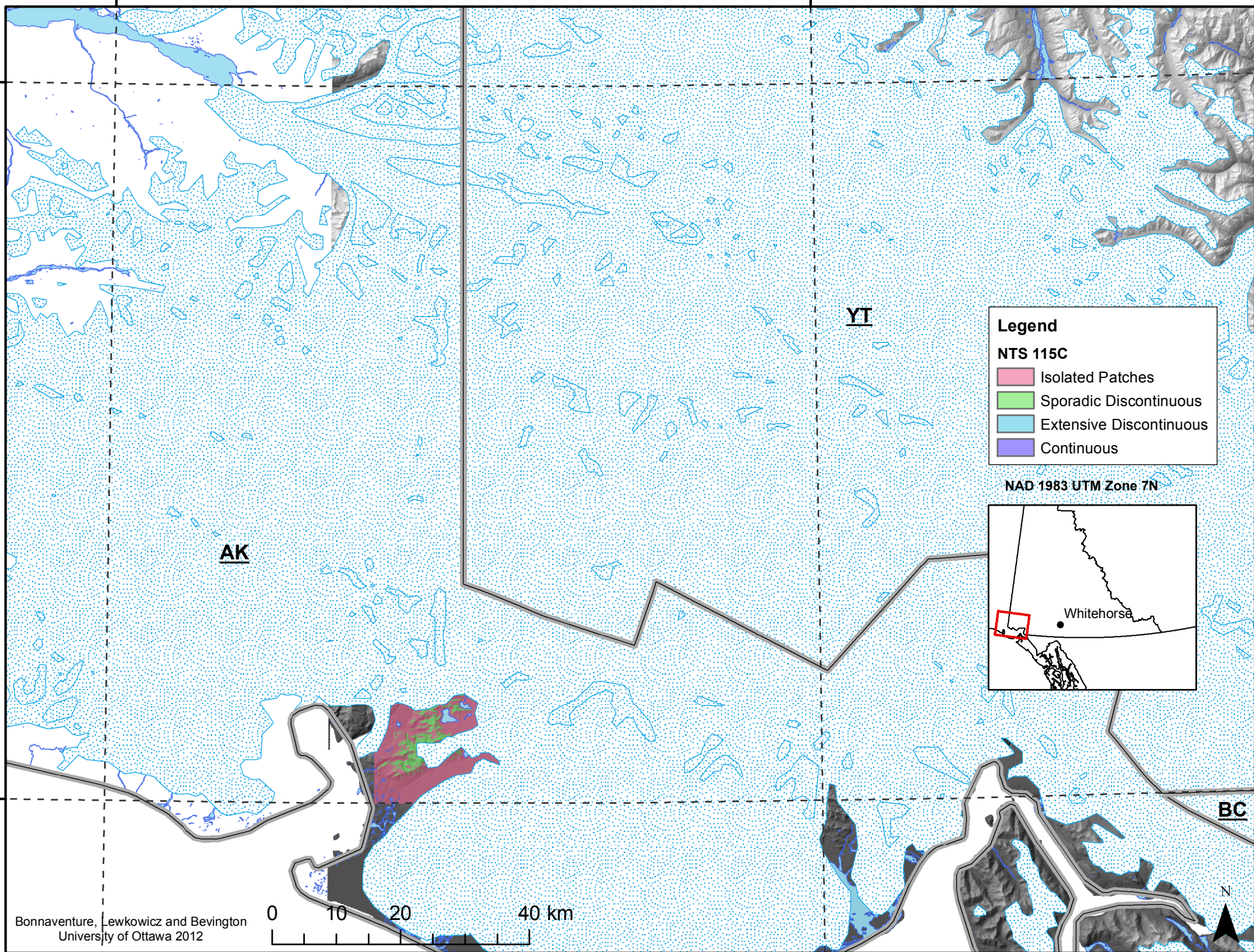
140°0'0"W

61°0'0"N

60°0'0"N

61°0'0"N

60°0'0"N



Legend

NTS 115C

- Isolated Patches
- Sporadic Discontinuous
- Extensive Discontinuous
- Continuous

NAD 1983 UTM Zone 7N

Whitehorse

Bonnaventure, Lewkowicz and Bevington
University of Ottawa 2012

0 10 20 40 km

142°0'0"W

140°0'0"W

