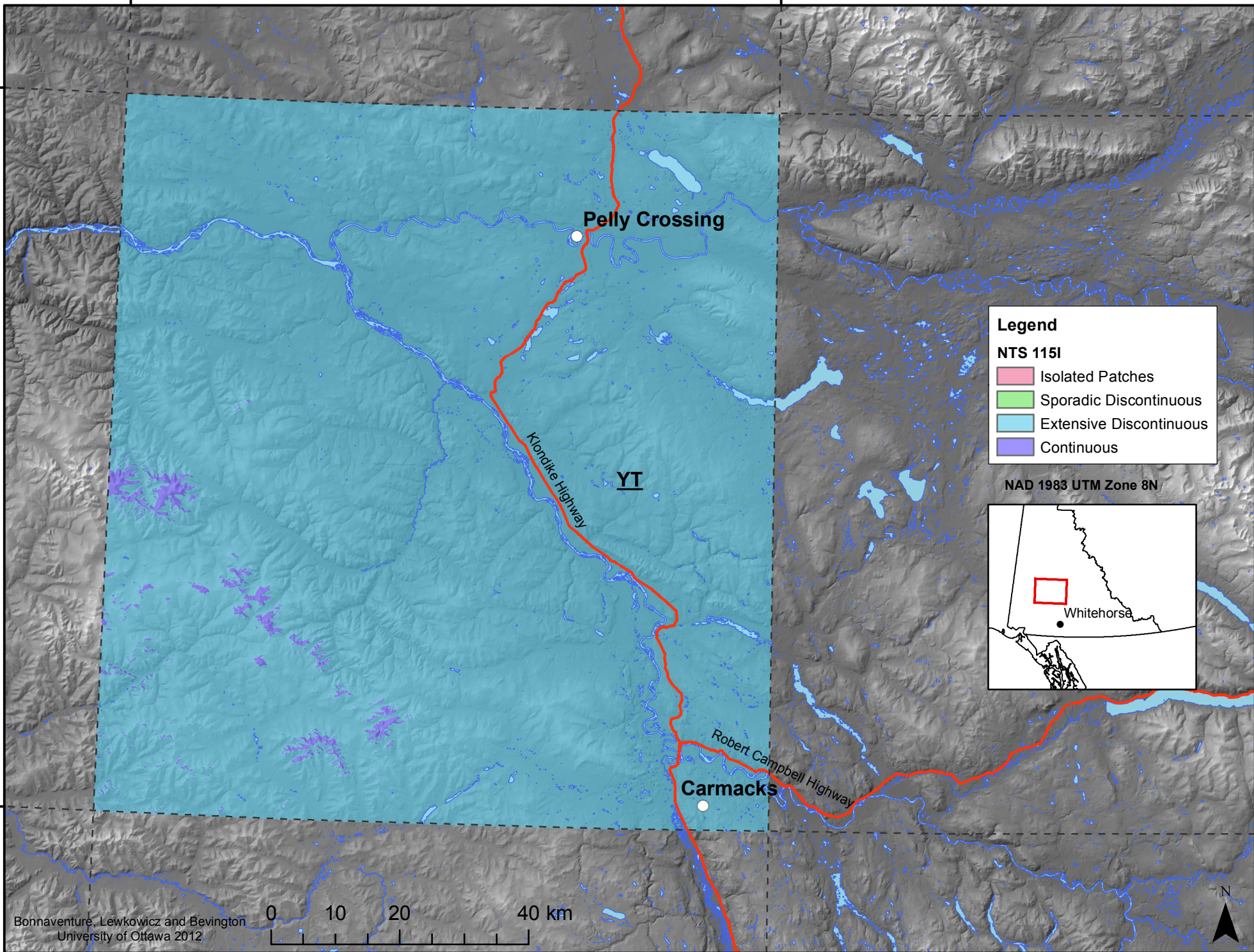


138°0'0"W

136°0'0"W

63°0'0"N

62°0'0"N



Legend

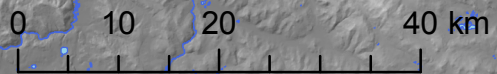
NTS 115I

- Isolated Patches
- Sporadic Discontinuous
- Extensive Discontinuous
- Continuous

NAD 1983 UTM Zone 8N



Bonnaventure, Lewkowicz and Bevington
University of Ottawa 2012



138°0'0"W

136°0'0"W