

132°0'0"W

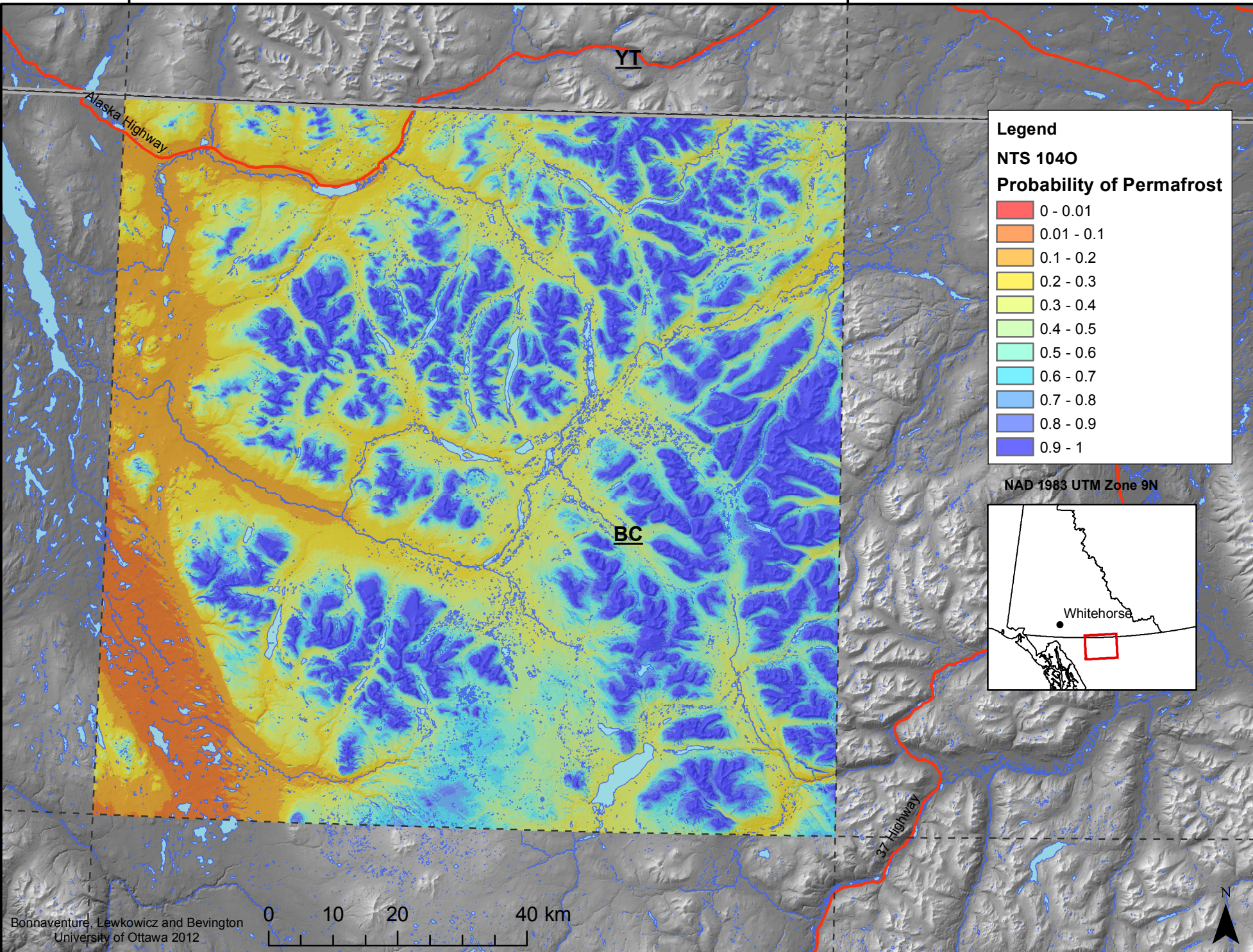
130°0'0"W

60°0'0"N

59°0'0"N

60°0'0"N

59°0'0"N



Legend

NTS 1040

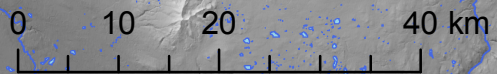
Probability of Permafrost

- 0 - 0.01
- 0.01 - 0.1
- 0.1 - 0.2
- 0.2 - 0.3
- 0.3 - 0.4
- 0.4 - 0.5
- 0.5 - 0.6
- 0.6 - 0.7
- 0.7 - 0.8
- 0.8 - 0.9
- 0.9 - 1

NAD 1983 UTM Zone 9N

Whitehorse

Bonnaventure, Lewkowicz and Bevington
 University of Ottawa 2012



132°0'0"W

130°0'0"W