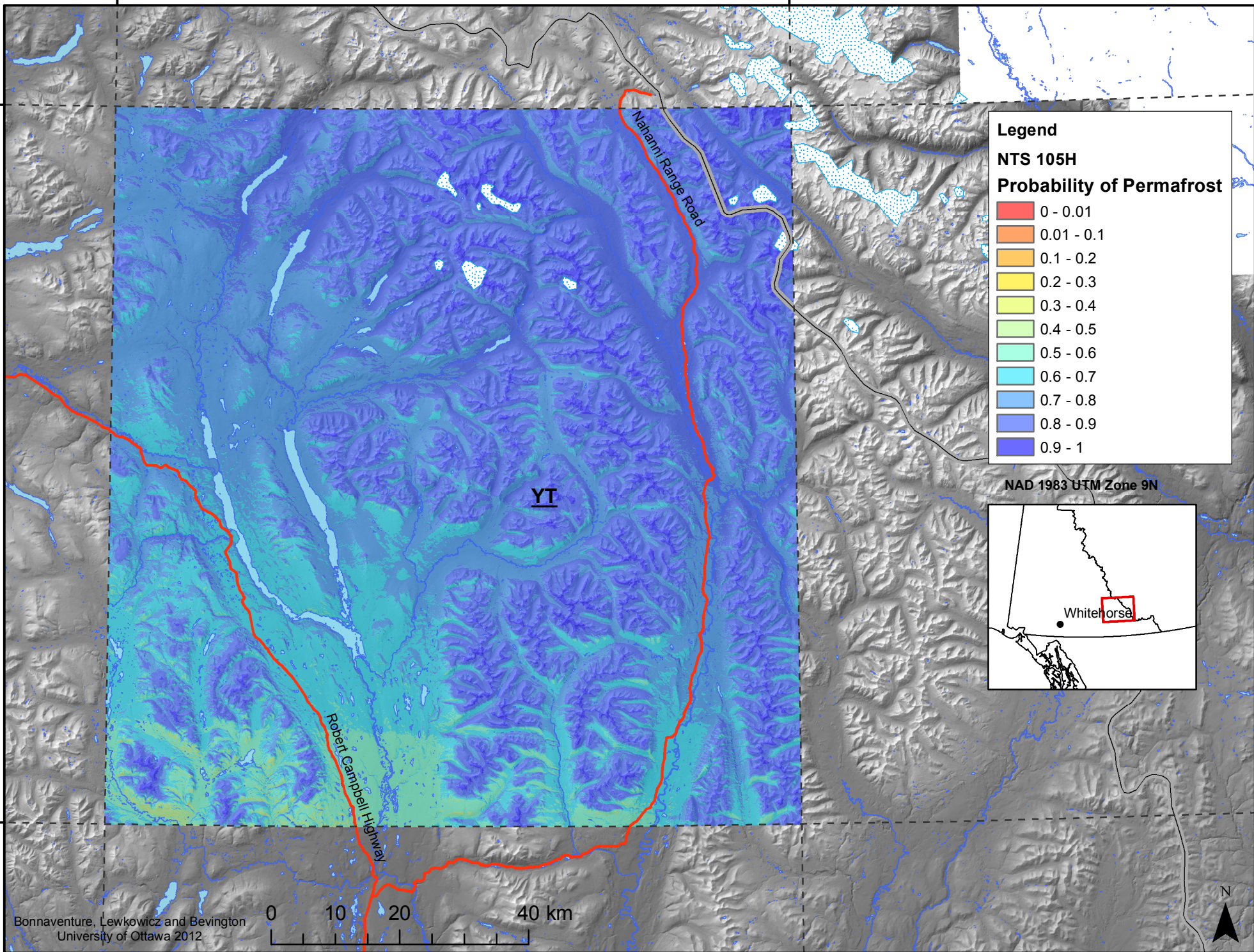


130°0'0"W

128°0'0"W

62°0'0"N

62°0'0"N



Legend
NTS 105H
Probability of Permafrost

0 - 0.01
0.01 - 0.1
0.1 - 0.2
0.2 - 0.3
0.3 - 0.4
0.4 - 0.5
0.5 - 0.6
0.6 - 0.7
0.7 - 0.8
0.8 - 0.9
0.9 - 1

NAD 1983 UTM Zone 9N

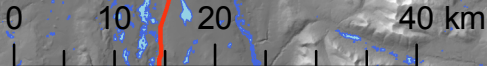


Whitehorse

61°0'0"N

61°0'0"N

Bonnaventure, Lewkowicz and Bevington
University of Ottawa 2012



130°0'0"W

128°0'0"W

