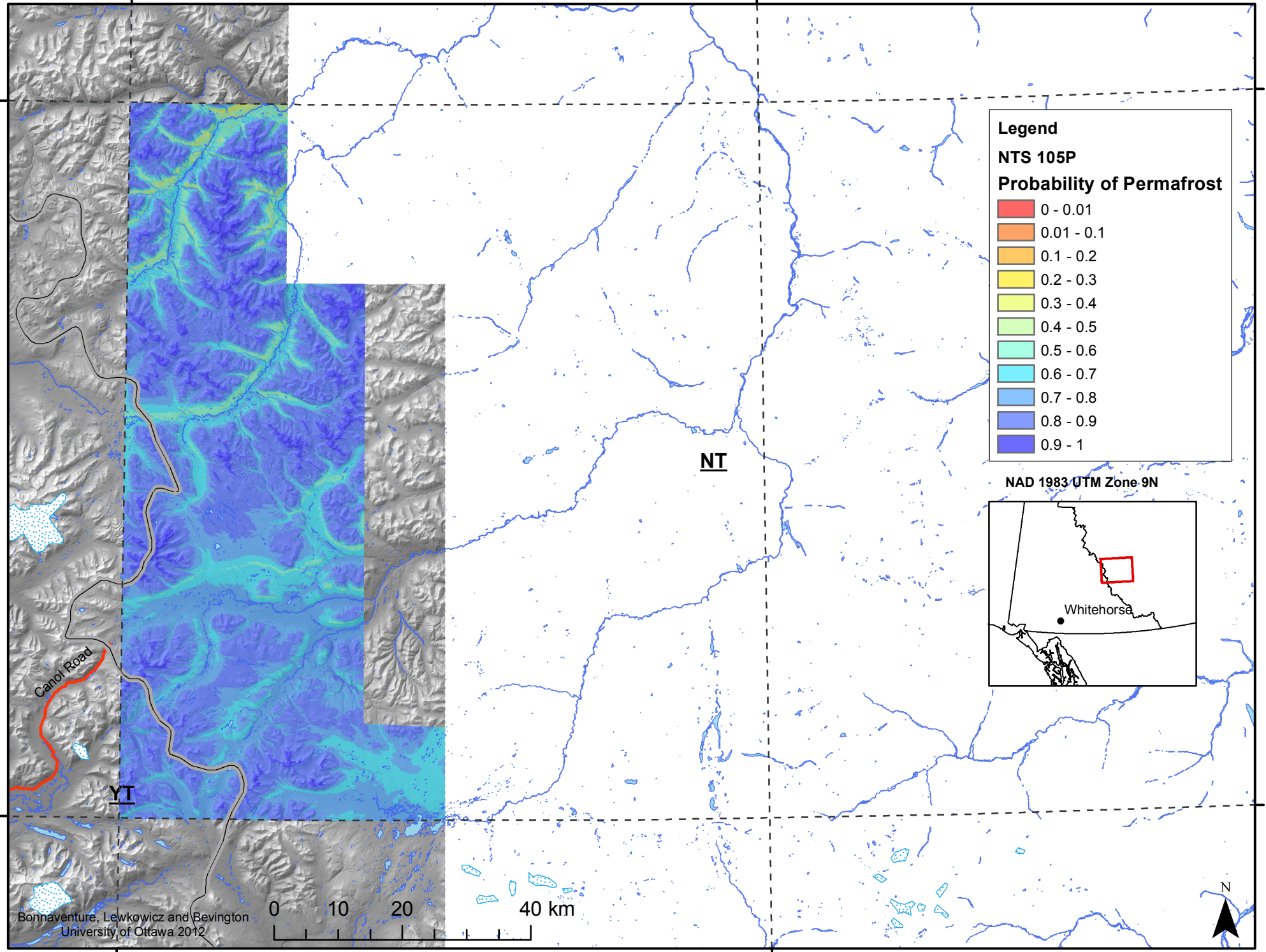


130°0'0"W

128°0'0"W

64°0'0"N

64°0'0"N



**Legend**  
**NTS 105P**  
**Probability of Permafrost**

0 - 0.01
0.01 - 0.1
0.1 - 0.2
0.2 - 0.3
0.3 - 0.4
0.4 - 0.5
0.5 - 0.6
0.6 - 0.7
0.7 - 0.8
0.8 - 0.9
0.9 - 1

NAD 1983 UTM Zone 9N

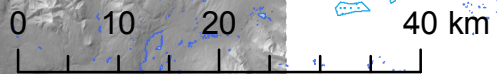


Whitehorse

**NT**

**YT**

Bonnaventure, Lewkowicz and Bevington  
University of Ottawa 2012



130°0'0"W

128°0'0"W

63°0'0"N

63°0'0"N