

130°0'0\"/>

128°0'0\"/>

65°0'0\"/>

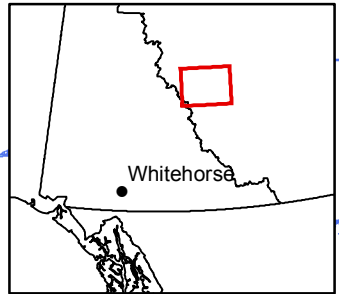
65°0'0\"/>

**Legend**  
**NTS 106A**  
**Probability of Permafrost**

|            |
|------------|
| 0 - 0.01   |
| 0.01 - 0.1 |
| 0.1 - 0.2  |
| 0.2 - 0.3  |
| 0.3 - 0.4  |
| 0.4 - 0.5  |
| 0.5 - 0.6  |
| 0.6 - 0.7  |
| 0.7 - 0.8  |
| 0.8 - 0.9  |
| 0.9 - 1    |

NT

NAD 1983 UTM Zone 9N

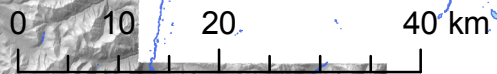


Whitehorse

64°0'0\"/>

64°0'0\"/>

**YT**  
Bonnaventure, Lewkowicz and Bevington  
University of Ottawa 2012



130°0'0\"/>

128°0'0\"/>