

136°0'0"W

134°0'0"W

66°0'0"N

65°0'0"N

**Legend**  
**NTS 106E**  
**Probability of Permafrost**

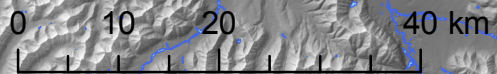
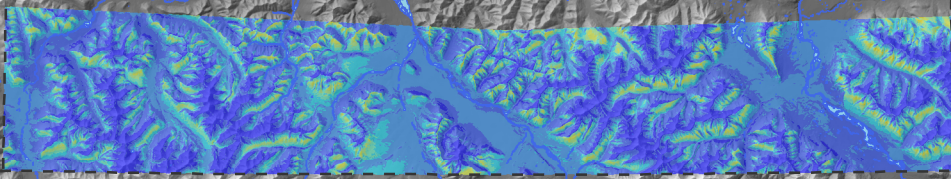
Red	0 - 0.01
Orange	0.01 - 0.1
Yellow-Orange	0.1 - 0.2
Yellow	0.2 - 0.3
Light Green	0.3 - 0.4
Green	0.4 - 0.5
Light Blue	0.5 - 0.6
Blue	0.6 - 0.7
Dark Blue	0.7 - 0.8
Very Dark Blue	0.8 - 0.9
Black	0.9 - 1

NAD 1983 UTM Zone 8N

Whitehorse

YI

NT



Bonnaventure, Lewkowicz and Bevington  
University of Ottawa 2012



136°0'0"W

134°0'0"W

66°0'0"N

65°0'0"N