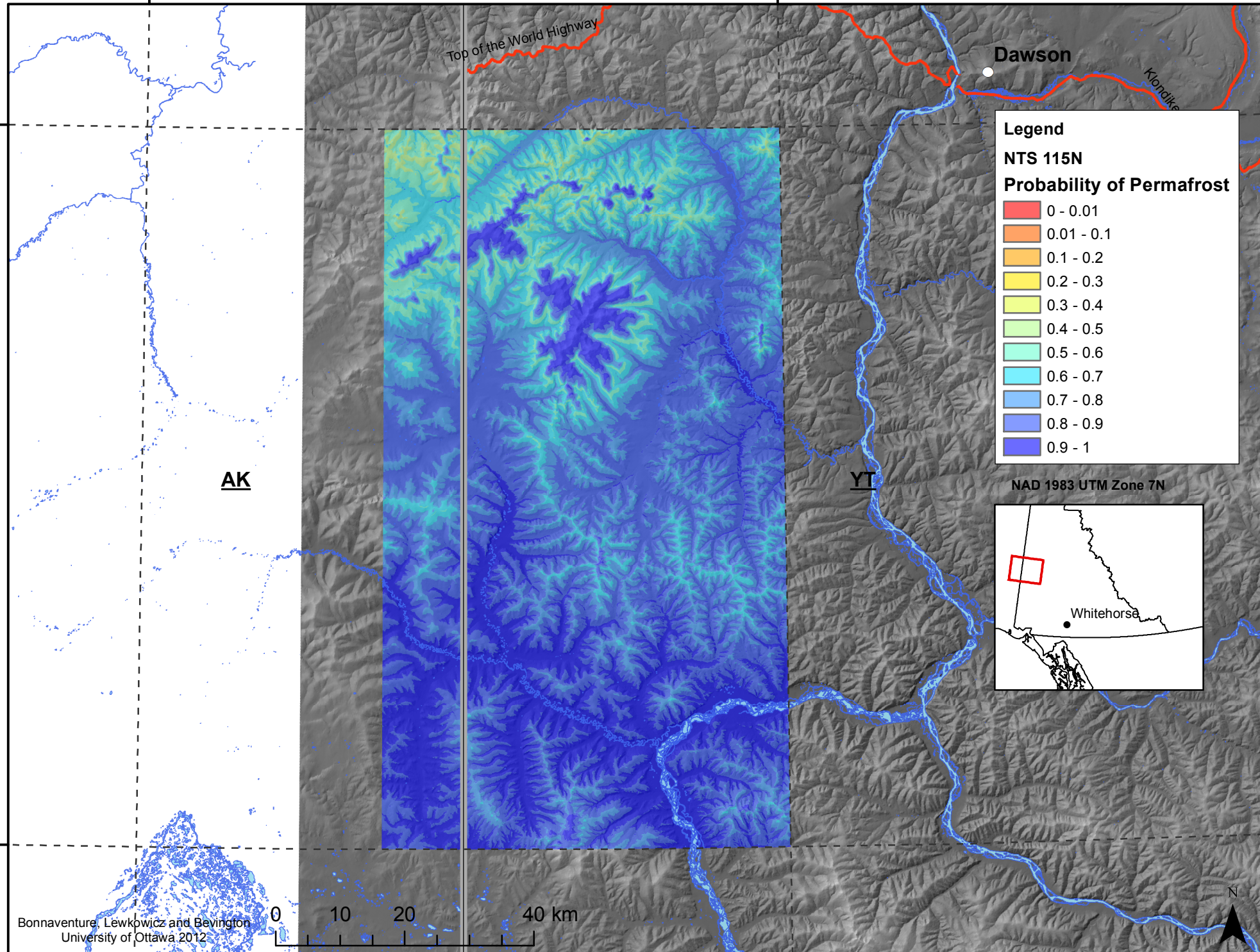


142°0'0"W

140°0'0"W

64°0'0"N

64°0'0"N

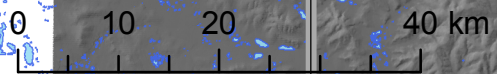


Legend
NTS 115N
Probability of Permafrost

0 - 0.01
0.01 - 0.1
0.1 - 0.2
0.2 - 0.3
0.3 - 0.4
0.4 - 0.5
0.5 - 0.6
0.6 - 0.7
0.7 - 0.8
0.8 - 0.9
0.9 - 1

NAD 1983 UTM Zone 7N

Bonnaventure, Lewkowicz and Bevington
University of Ottawa 2012



142°0'0"W

140°0'0"W

63°0'0"N

63°0'0"N