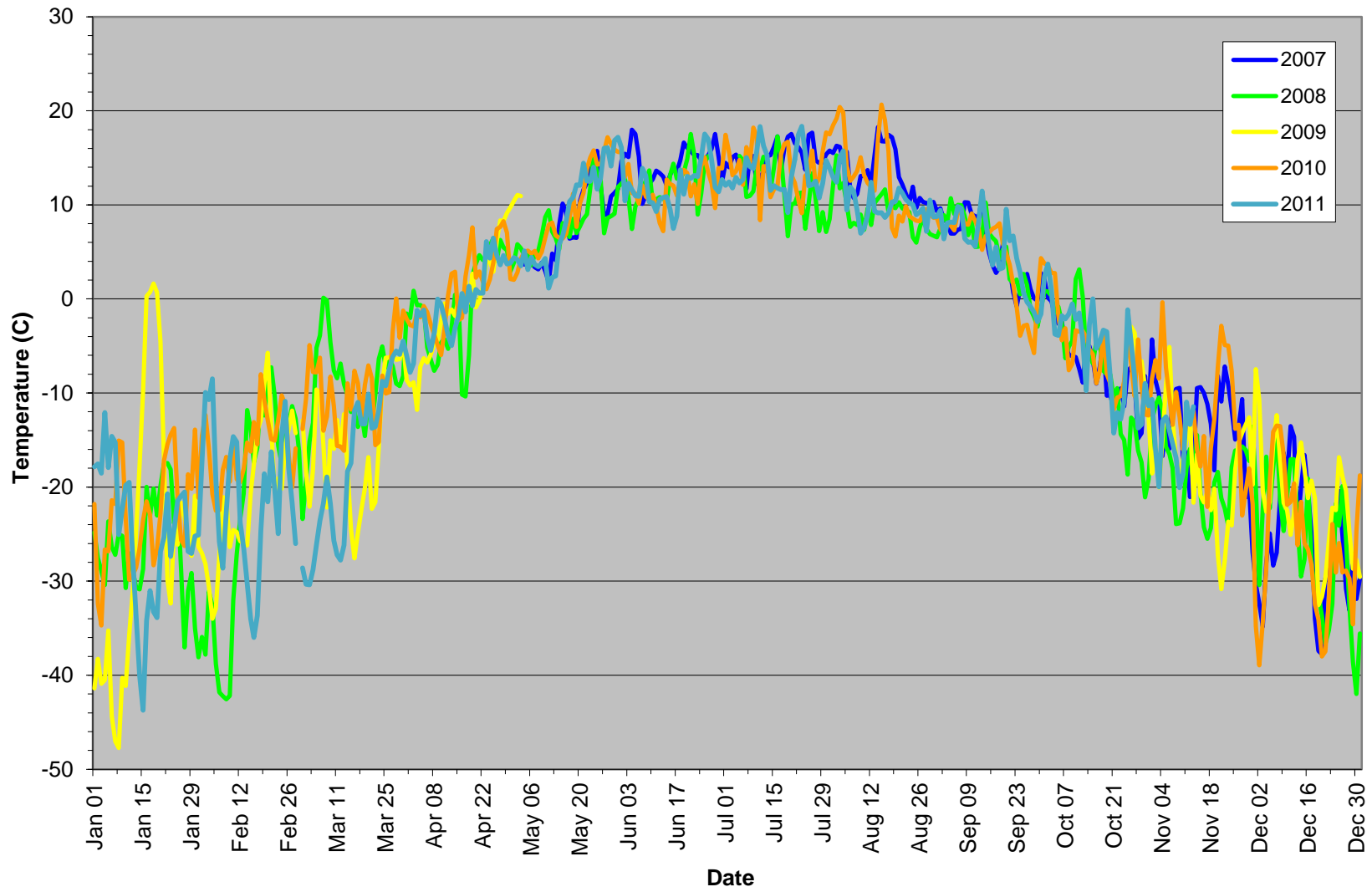
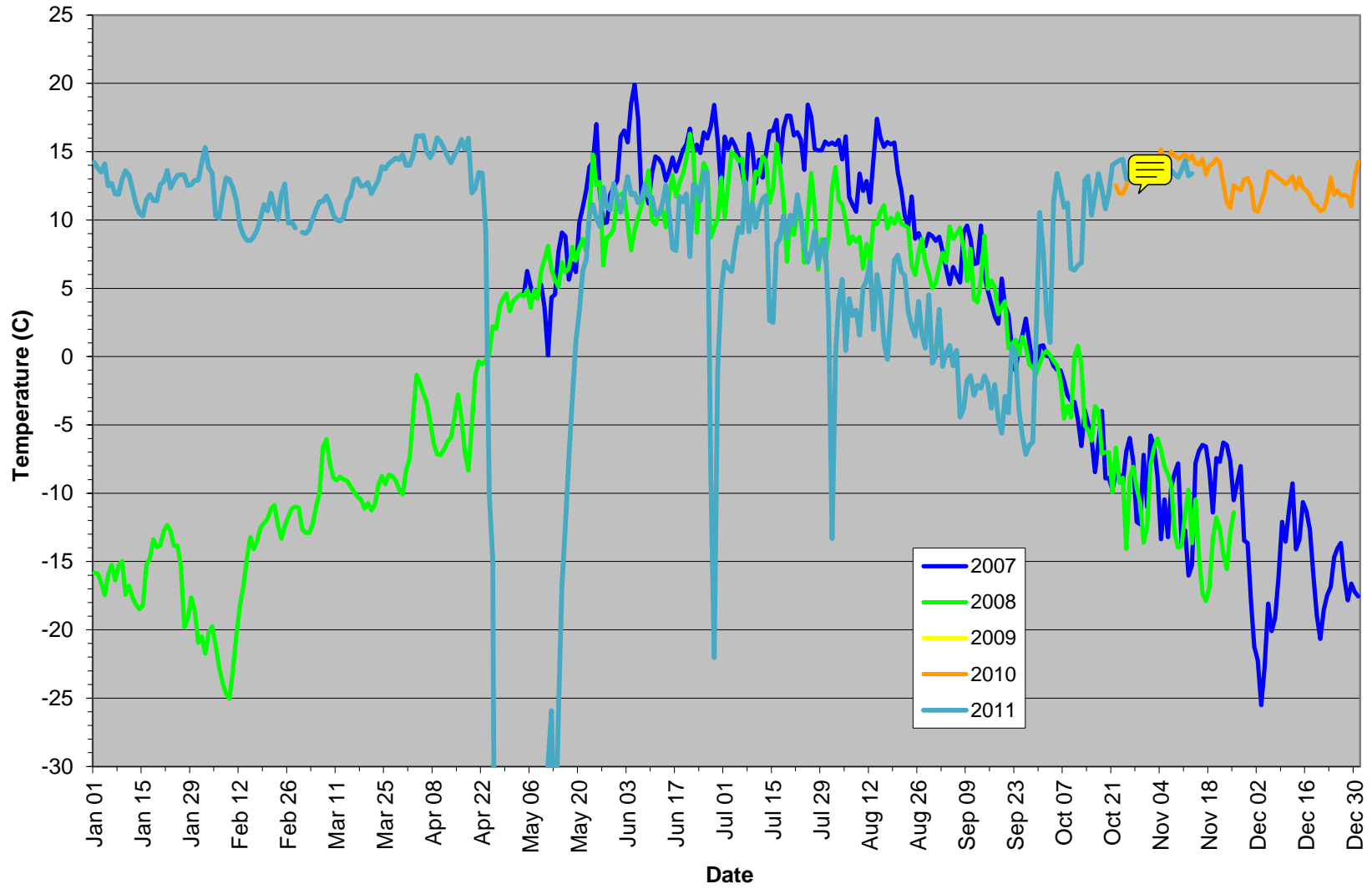


Beaver Creek Average Daily Air Temperatures, 2007-2011
(data from Alaska Highway km 1928.5 test section borehole)



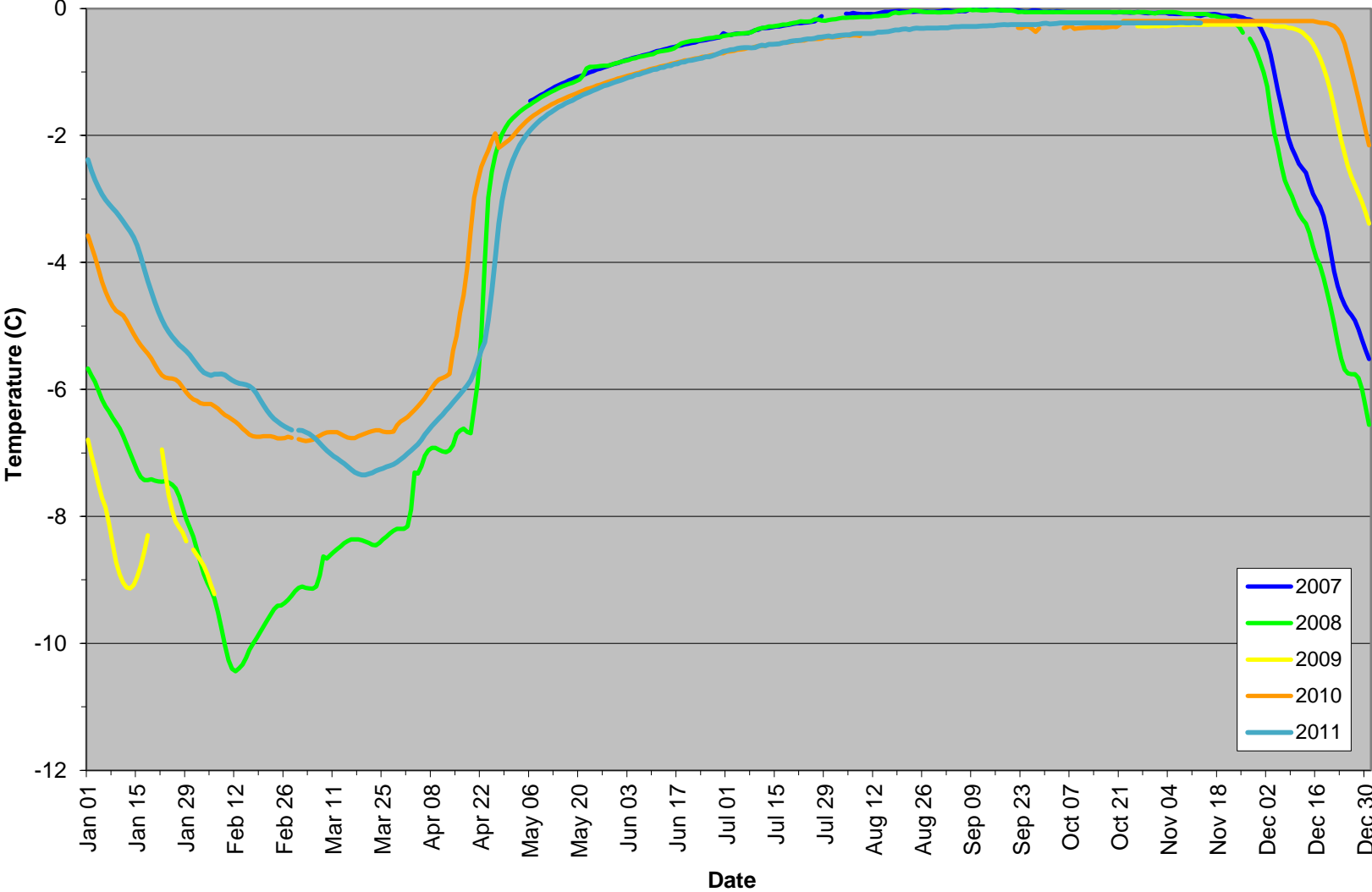
Beaver Creek Average Daily Ground Surface Temperatures, 2007-2011

(data from Alaska Highway km 1928.5 test section borehole)

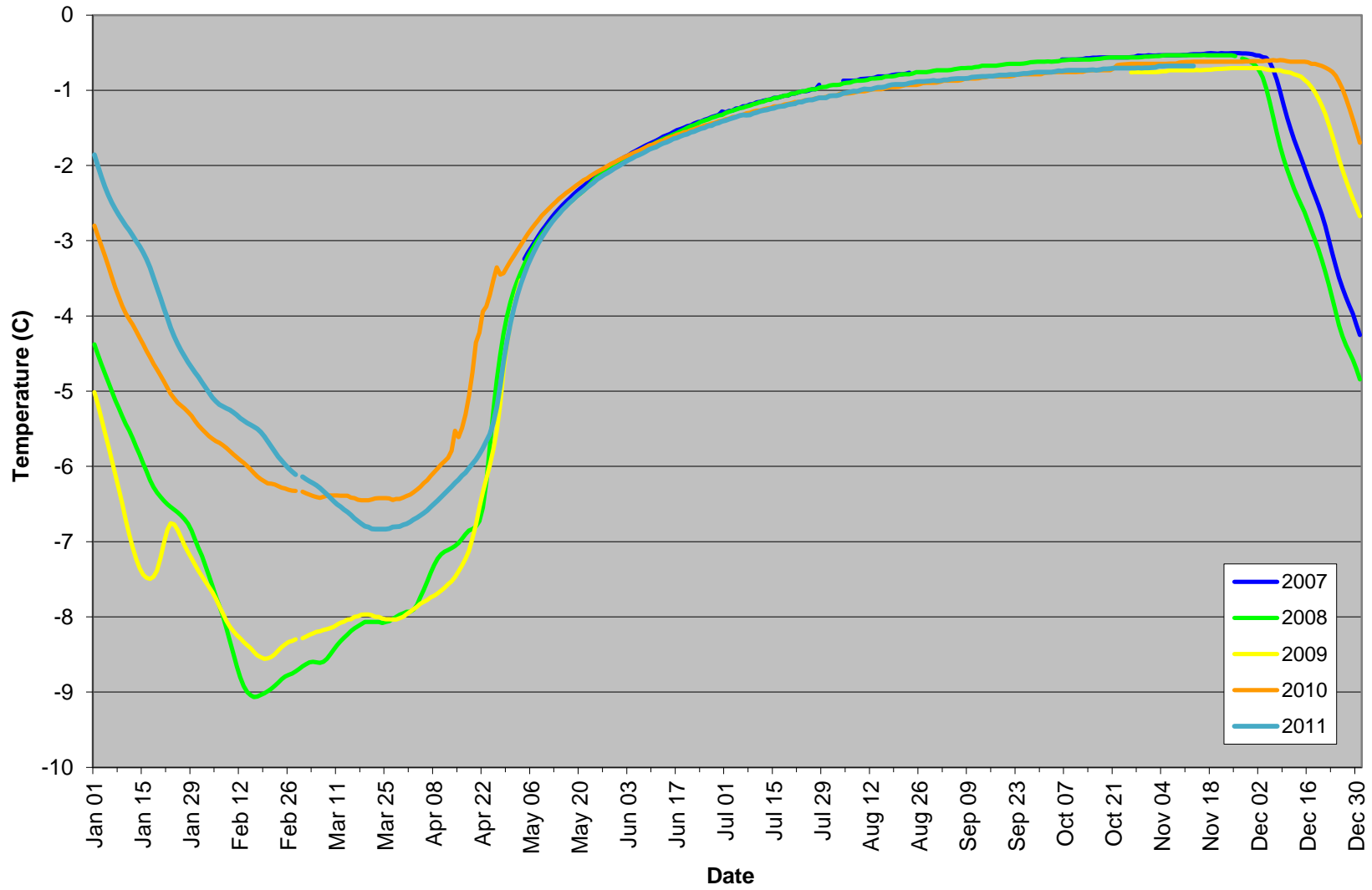


Beaver Creek Average Daily Ground Temperatures at 0.5 m, 2007-2011

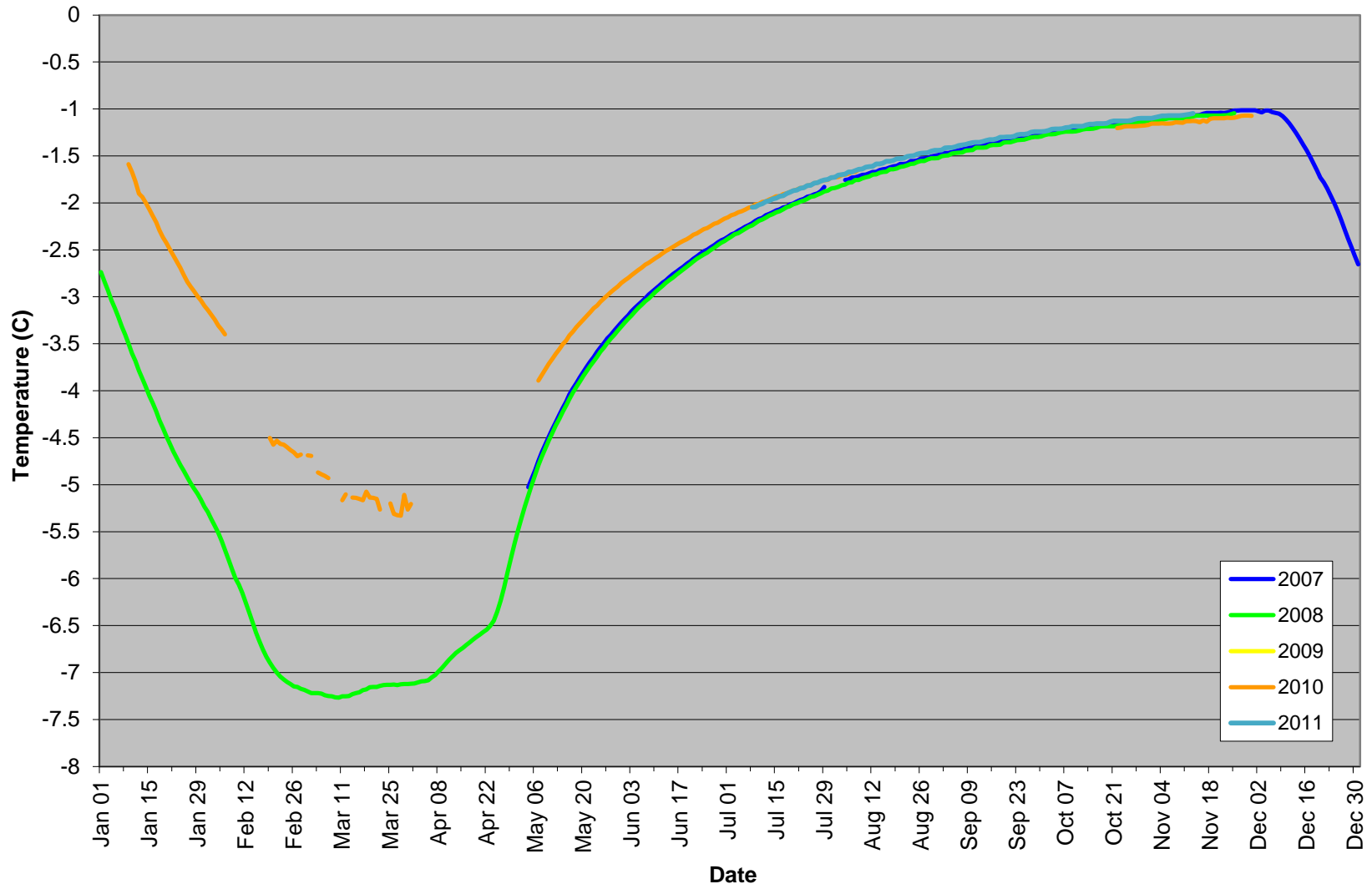
(data from Alaska Highway km 1928.5 test section borehole)



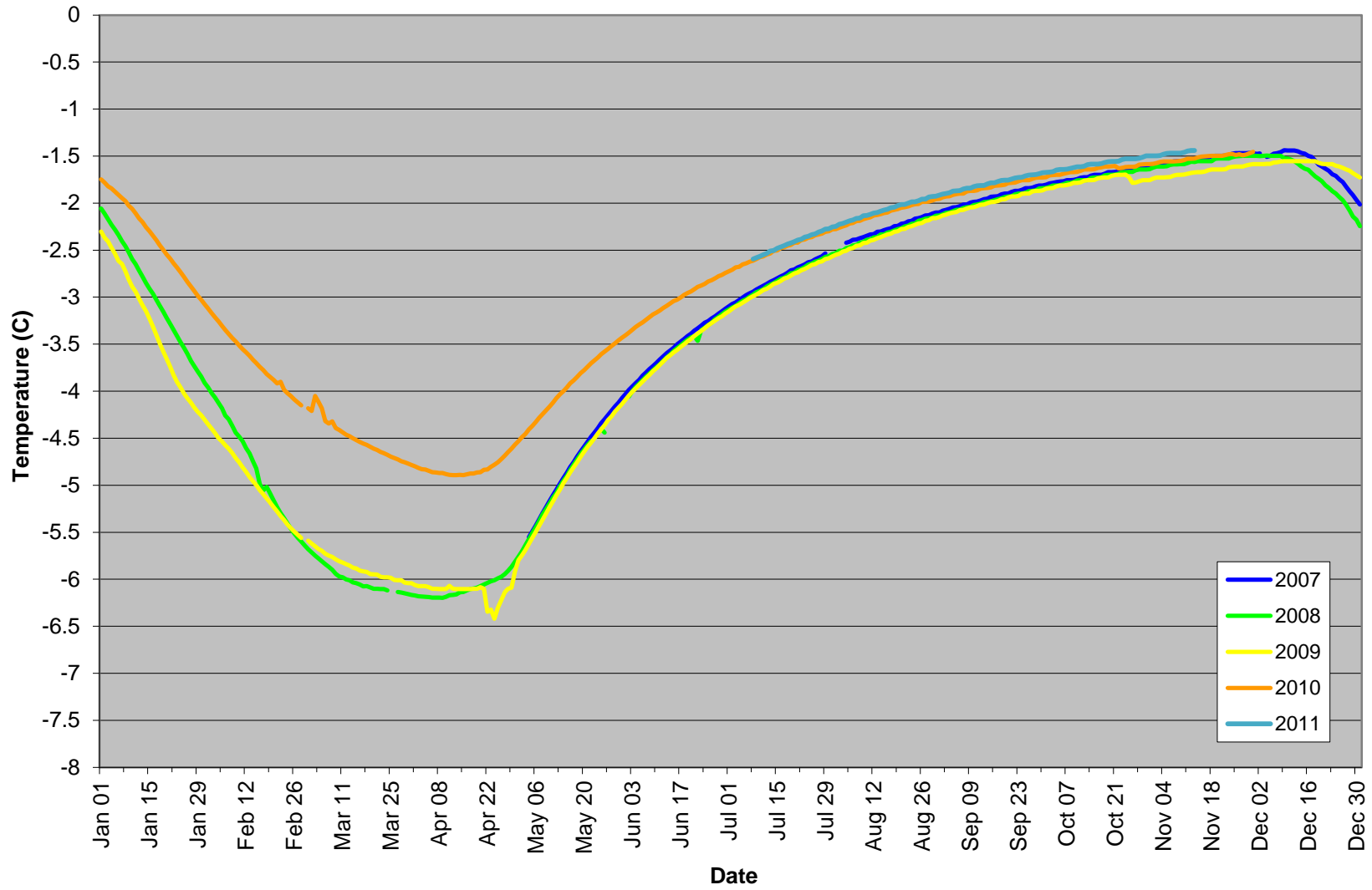
Beaver Creek Average Daily Ground Temperatures at 1 m, 2007-2011
(data from Alaska Highway km 1928.5 test section borehole)



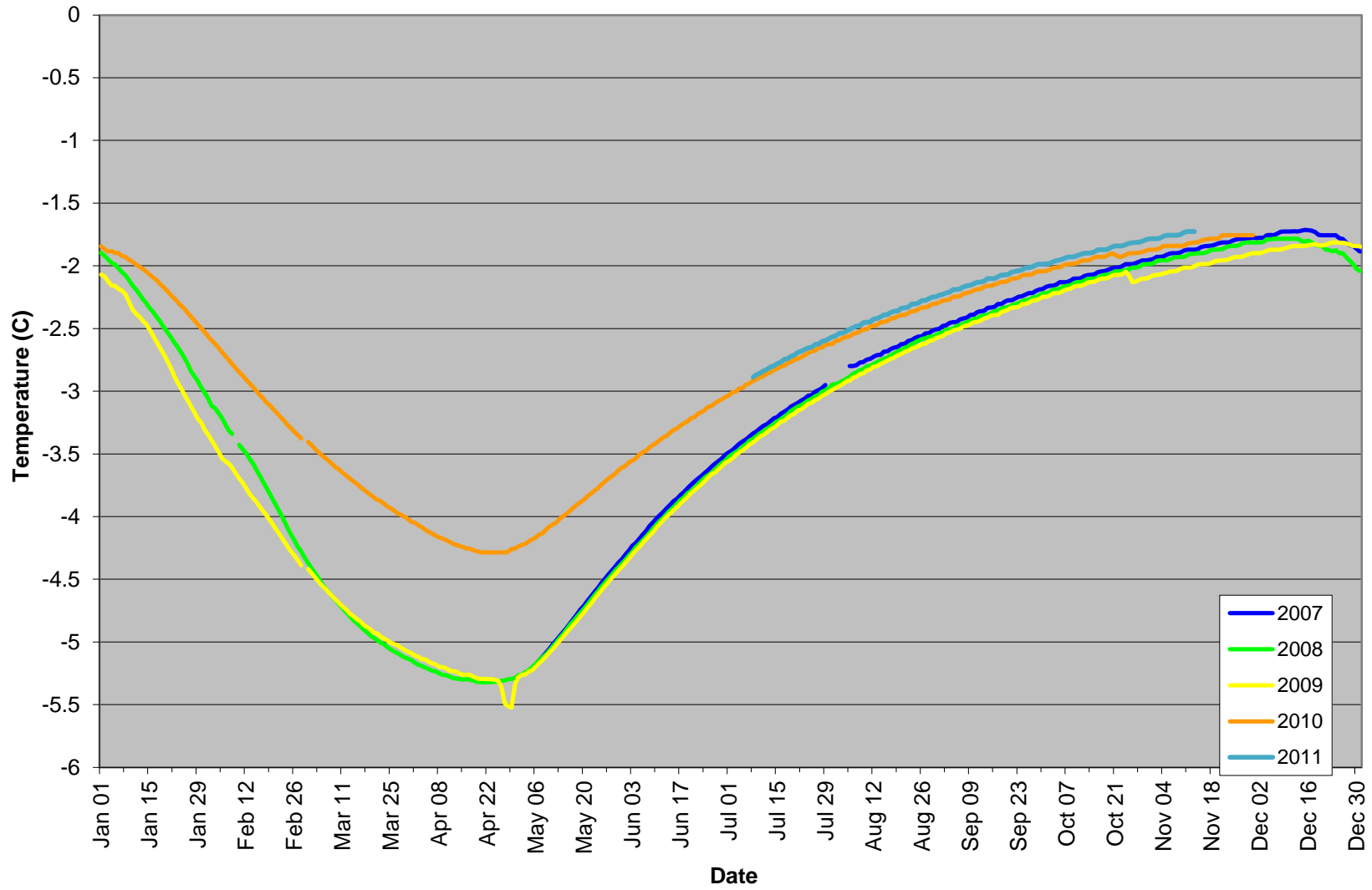
Beaver Creek Average Daily Ground Temperatures at 2 m, 2007-2011
(data from Alaska Highway km 1928.5 test section borehole)



Beaver Creek Average Daily Ground Temperatures at 3 m, 2007-2011
(data from Alaska Highway km 1928.5 test section borehole)



Beaver Creek Average Daily Ground Temperatures at 4 m, 2007-2011
(data from Alaska Highway km 1928.5 test section borehole)



Beaver Creek Average Daily Ground Temperatures at 5 m, 2007-2011
(data from Alaska Highway km 1928.5 test section borehole)

