



# The Haldane Silver Project, West Keno Hill District

Murray Jones

Equity Exploration Consultants Ltd.

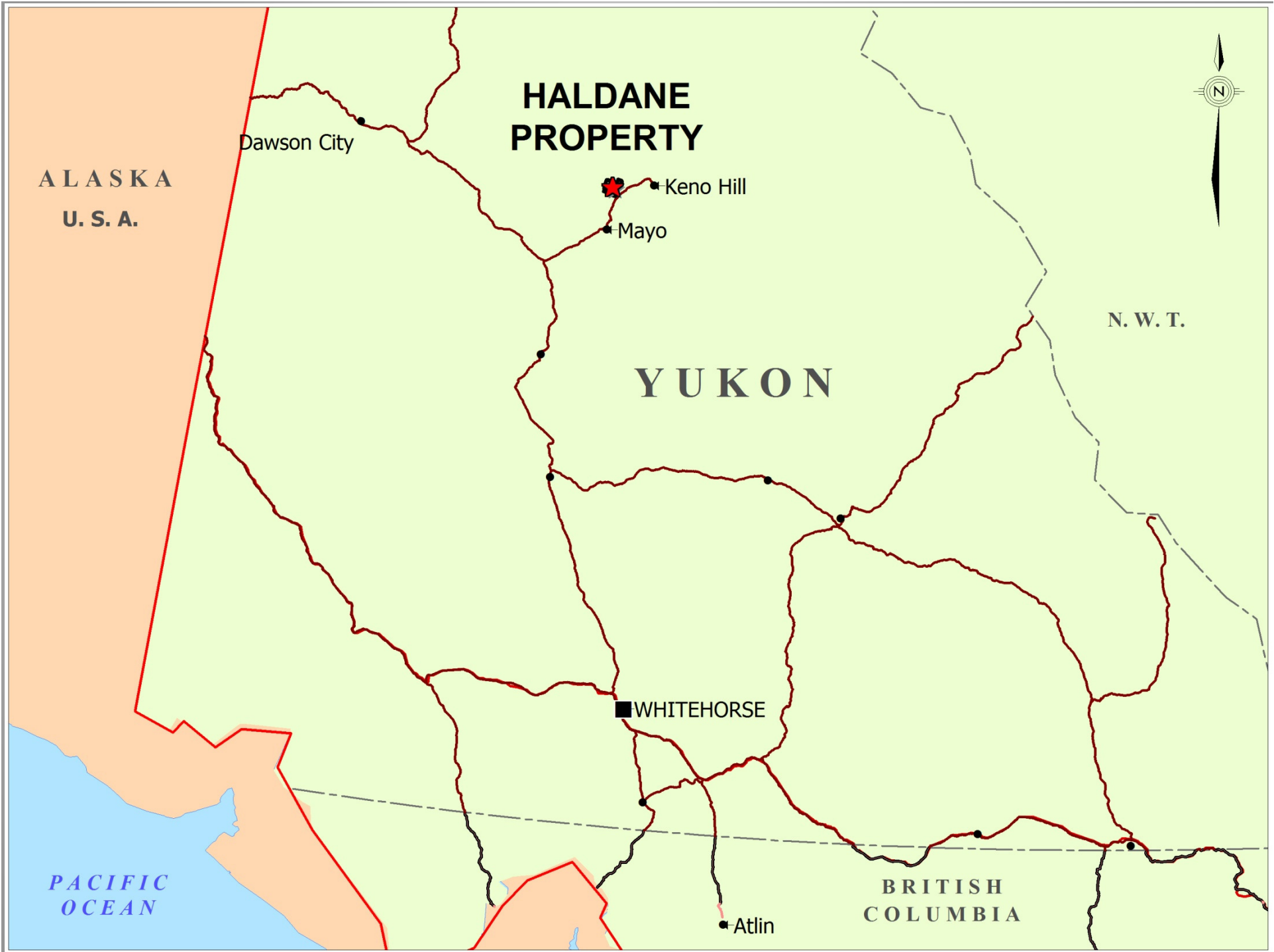
# Forward Looking Statement

*This presentation contains forward-looking statements. All statements, other than statements of historical fact, that address activities, events or developments that the Company believes, expects or anticipates will or may occur in the future (including, without limitation, statements regarding exploration results, potential mineralization, future plans and objectives of the Company and mineral resources) are forward-looking statements. These forward-looking statements reflect the current expectations or beliefs of the Company based on information currently available to the Company. Forward-looking statements are subject to a number of risks and uncertainties that may cause the actual results of the Company to differ materially from those discussed in the forward-looking statements, and even if such actual results are realized or substantially realized, there can be no assurance that they will have the expected consequences to, or effects on the Company. Factors that could cause actual results or events to differ materially from current expectations include, among other things, uncertainties relating to the availability and costs of financing needed in the future, changes in commodity prices, changes in equity markets, changes to regulations affecting the Company's activities, the uncertainties involved in interpreting exploration results and other geological data and the other risks involved in the mineral exploration industry. Any forward-looking statement speaks only as of the date on which it is made and, except as may be required by applicable securities laws, the Company disclaims any intent or obligation to update any forward-looking statement, whether as a result of new information, future events or results or otherwise. Although the Company believes that the assumptions inherent in the forward-looking statements are reasonable, forward-looking statements are not guarantees of future performance and accordingly undue reliance should not be put on such statements due to the inherent uncertainty therein.*

# Acknowledgements

- Habanero Resources Inc.
- Estate of John Peter Ross
- Yukon Geology Survey – Don Murphy
- Archer Cathro and Associates (1981) Ltd.
- Equity Exploration Consultants Ltd.

# HALDANE PROPERTY



ALASKA  
U. S. A.

Dawson City

Keno Hill

Mayo

N. W. T.

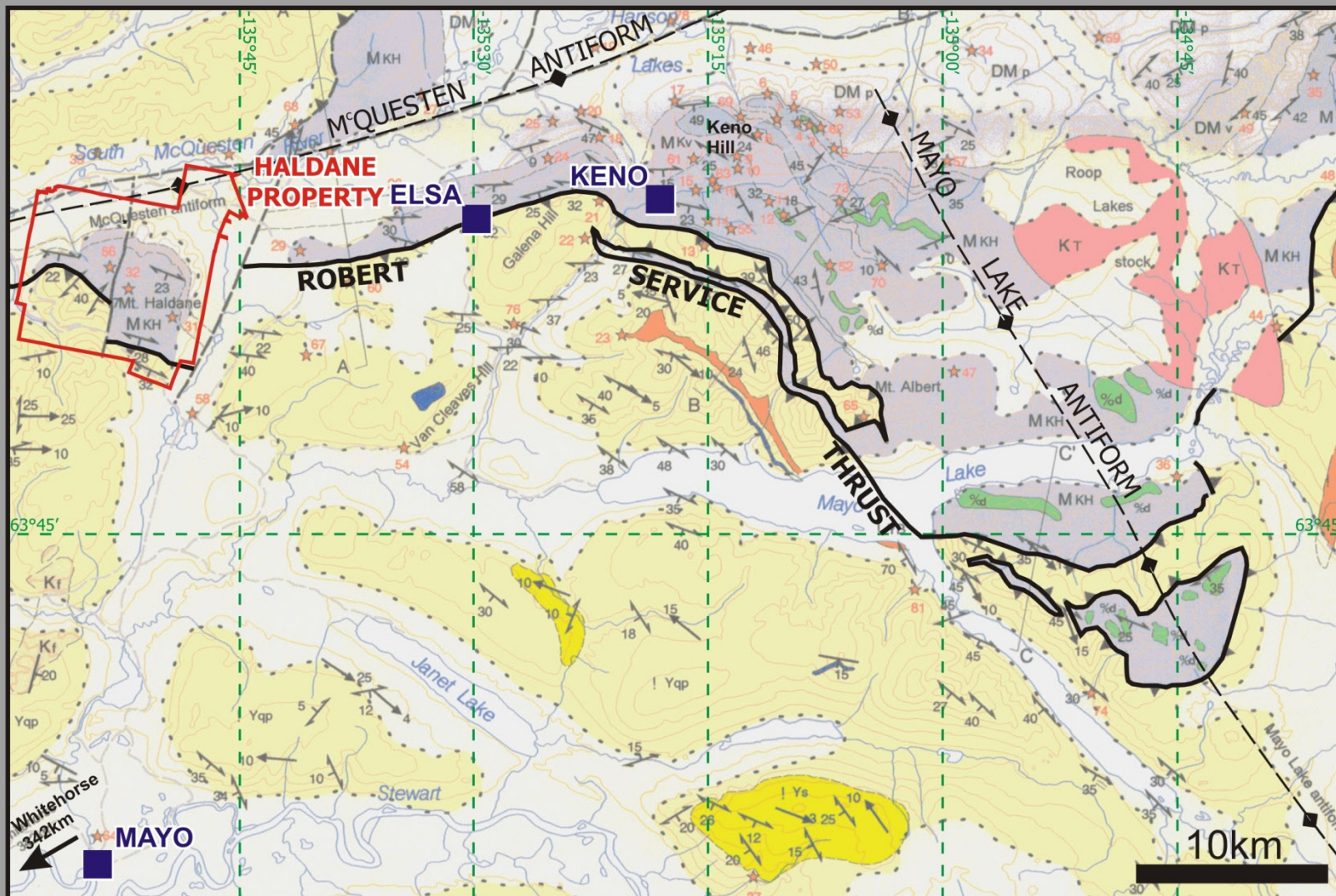
YUKON

WHITEHORSE

Atlin

BRITISH  
COLUMBIA

PACIFIC  
OCEAN



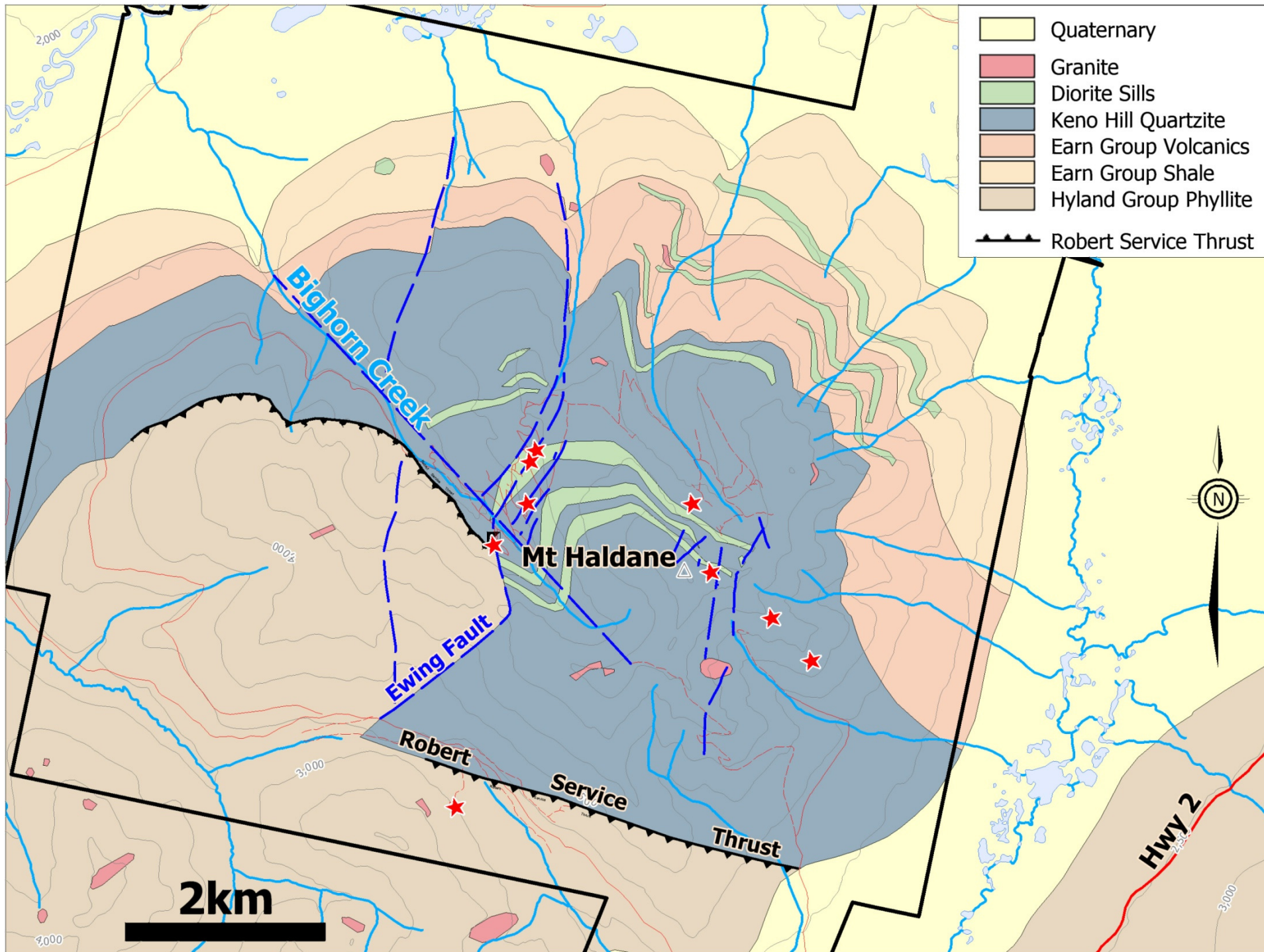
Map reference: ROOTS, C.F., 1997 Bedrock Geology of Mayo map area  
 Geoscience 1997-1, EGSD, Yukon, Indian and Northern Affairs, Canada



Mineral occurrence

- KT Cretaceous (Tombstone Intrusions)  
Biotite granite, monzonite
- Td Triassic (Tombstone Thrust sheet)  
Foliated diorite, gabbro
- MKH Early Carboniferous (Keno Hill Quartzite)  
Quartzite, phyllite

- MKv Early Carboniferous (Metavolcanic member)  
Chlorite or sercite phyllite, schist
- PYqp Upper Proterozoic  
Phyllite, quartzite
- PYs Upper Proterozoic  
Interbedded sandstone/mudstone



# Keno Hill Quartzite



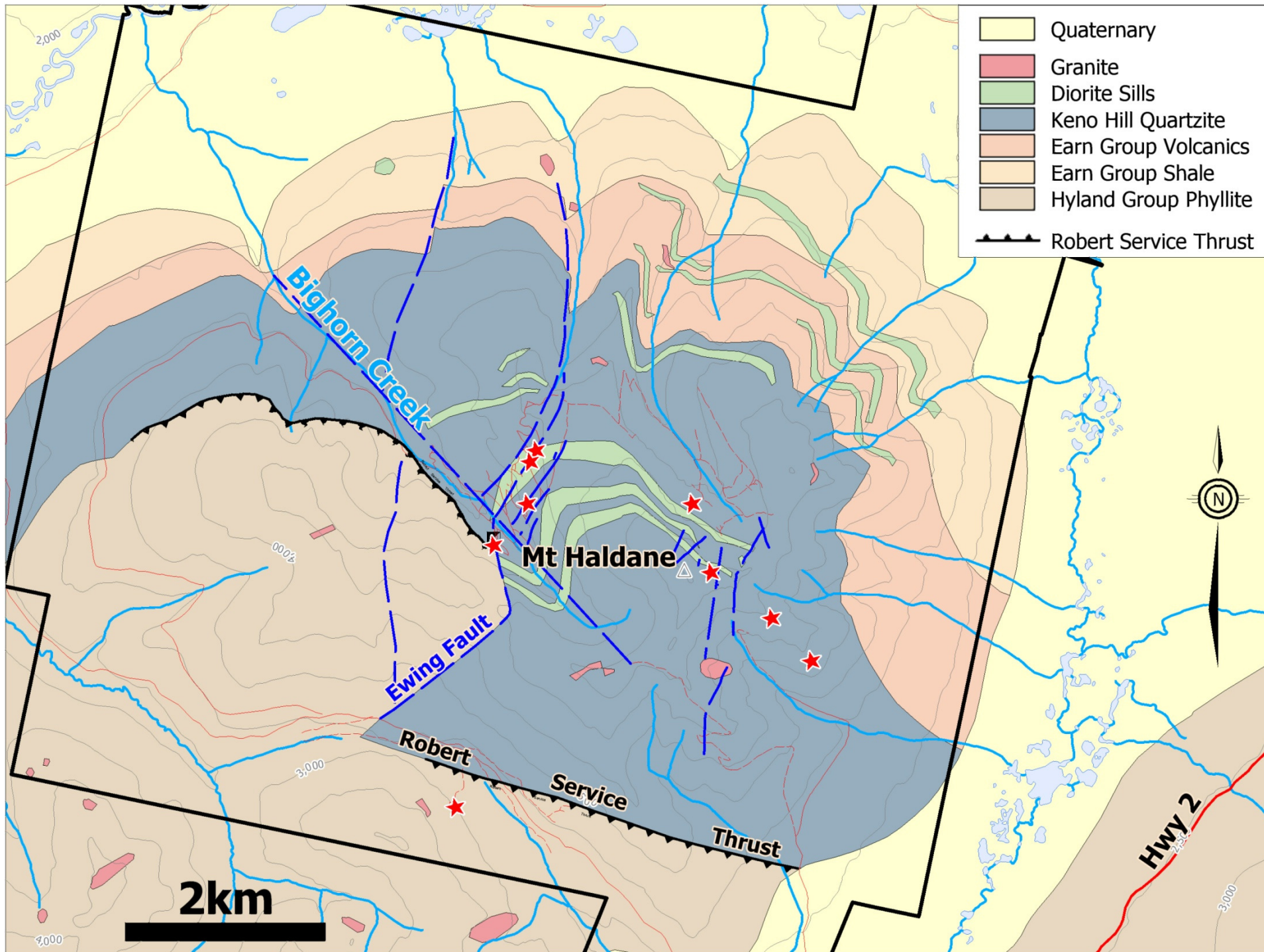
# Diorite within quartzite





Hyland Group Phyllite

Keno Hill  
Quartzite



# Main Zone South

- 1.1mchip@781g/t Ag(1964)

204/65



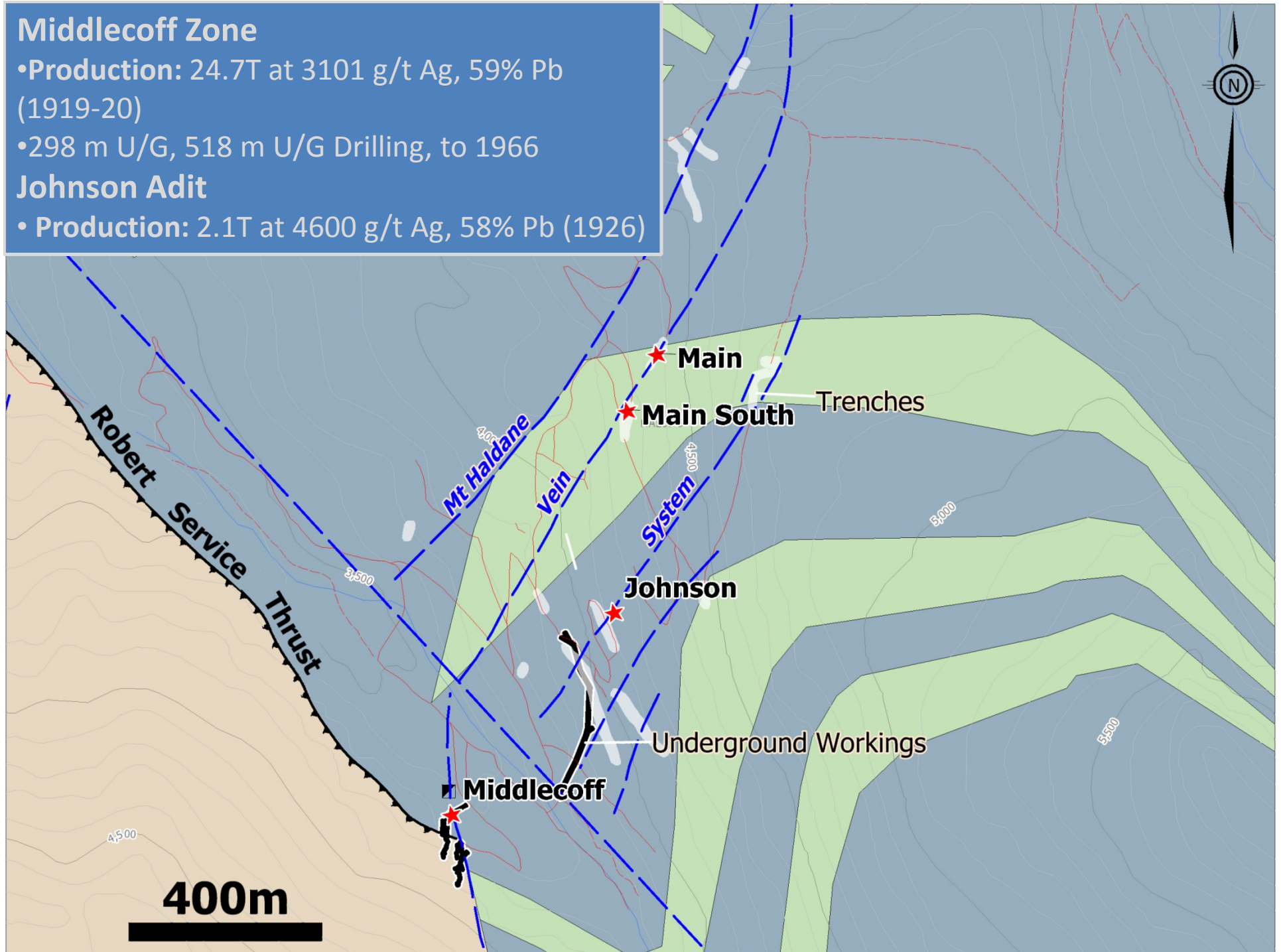
## Middlecoff Zone

- Production: 24.7T at 3101 g/t Ag, 59% Pb (1919-20)

- 298 m U/G, 518 m U/G Drilling, to 1966

## Johnson Adit

- Production: 2.1T at 4600 g/t Ag, 58% Pb (1926)

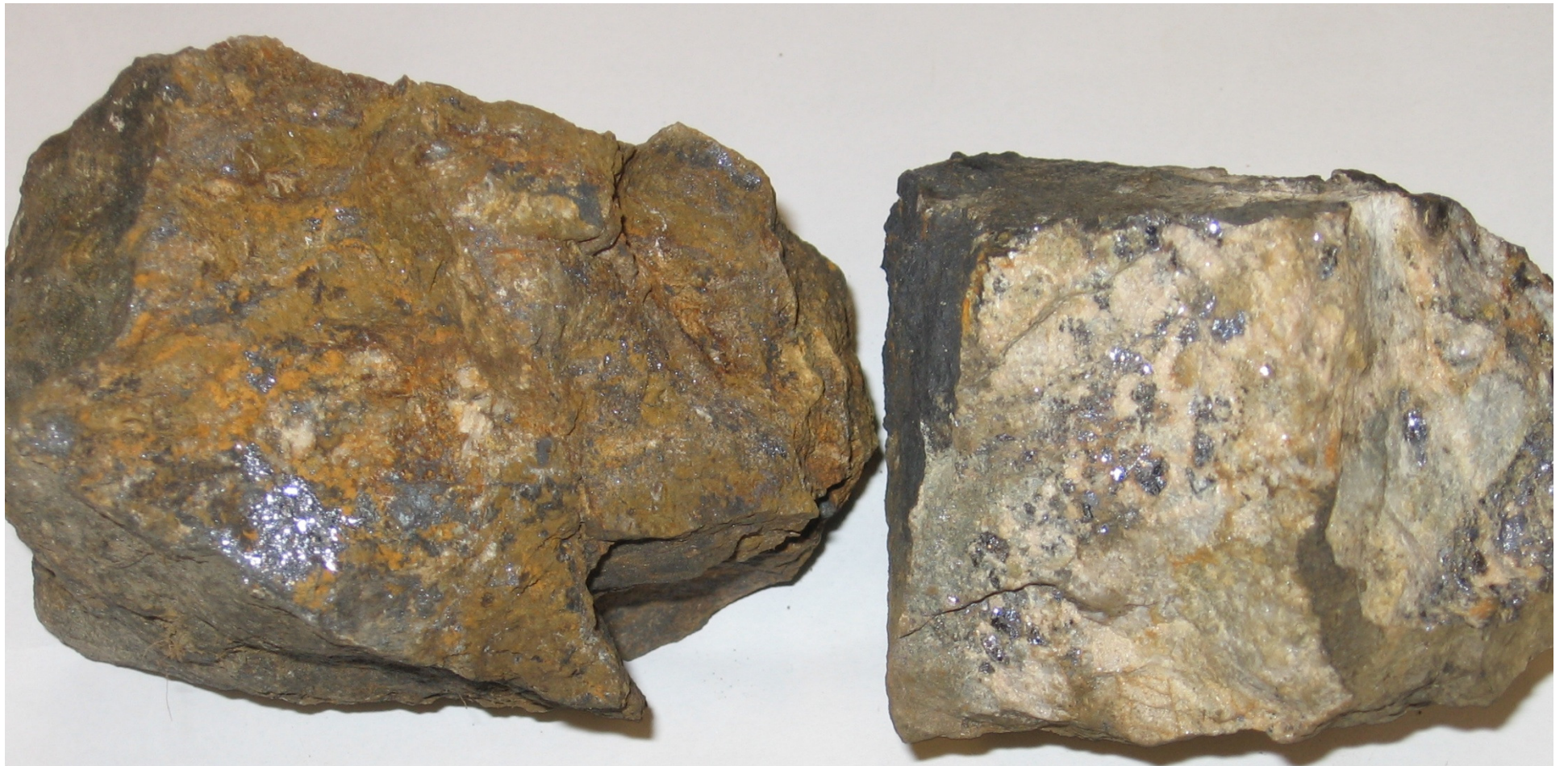


Looking Southwest

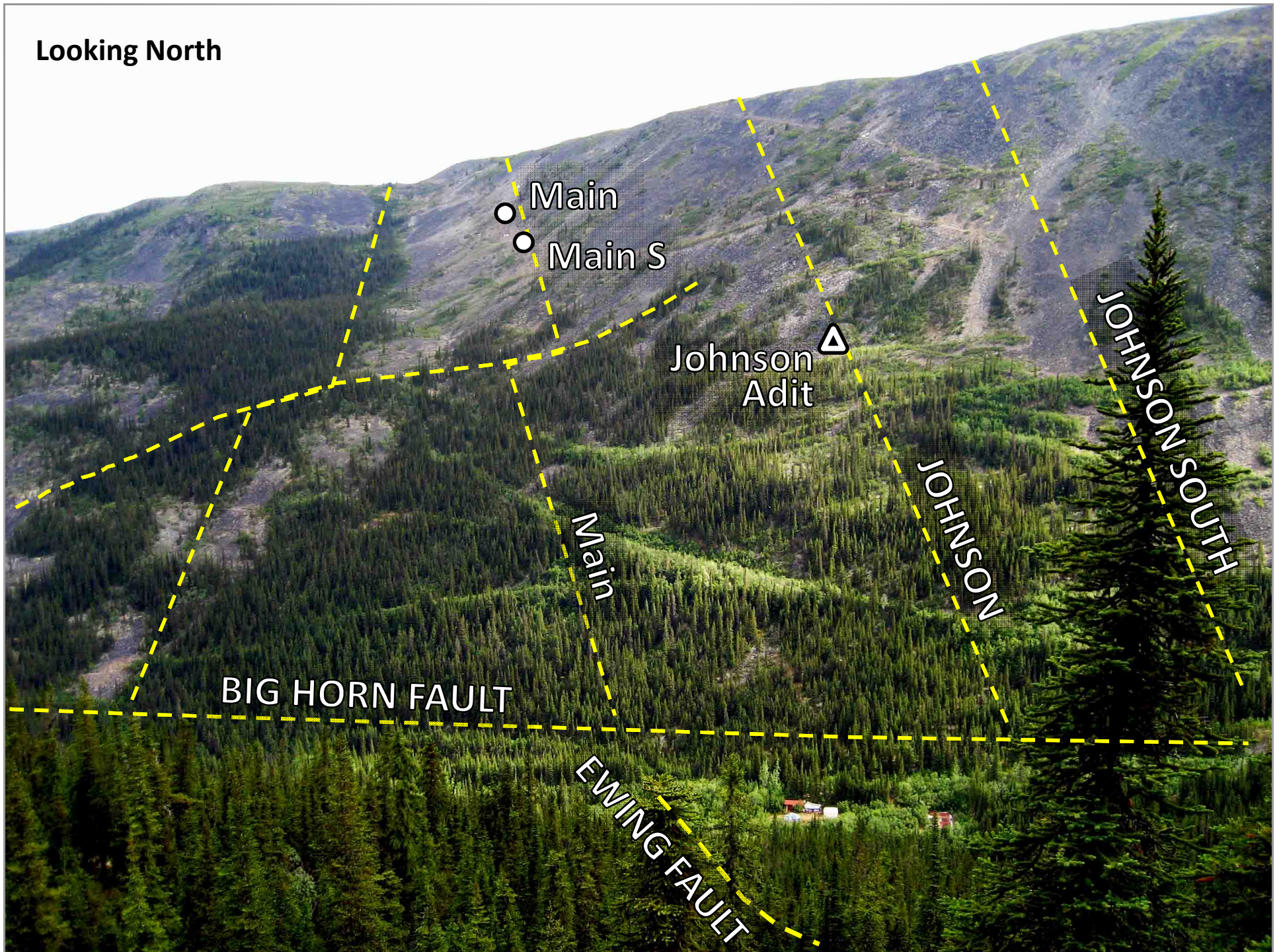


# Middlecoff Zone Mid-Level Adit





Looking North



Main  
Main S

Johnson Adit

BIG HORN FAULT

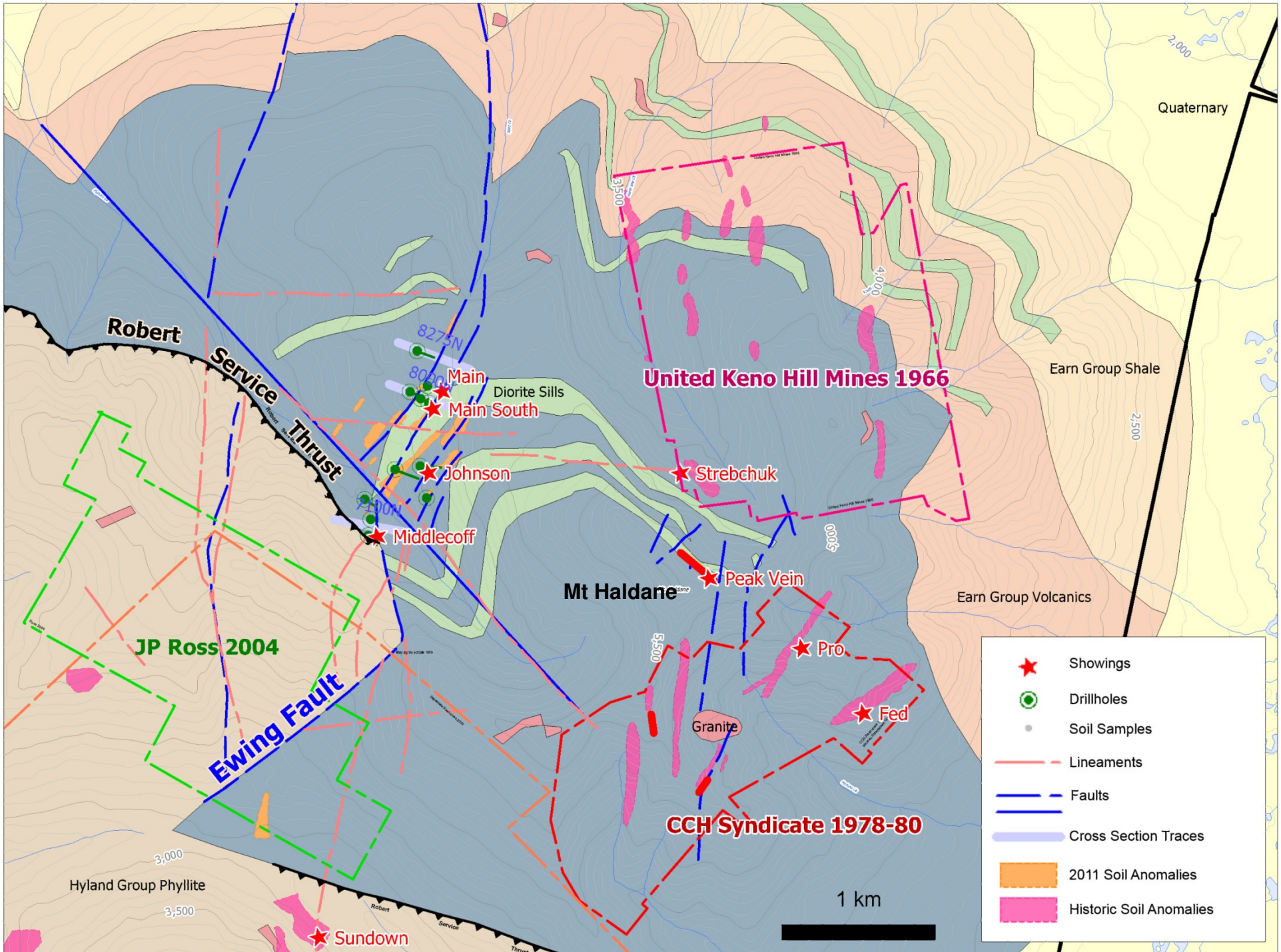
EWING FAULT

JOHNSON

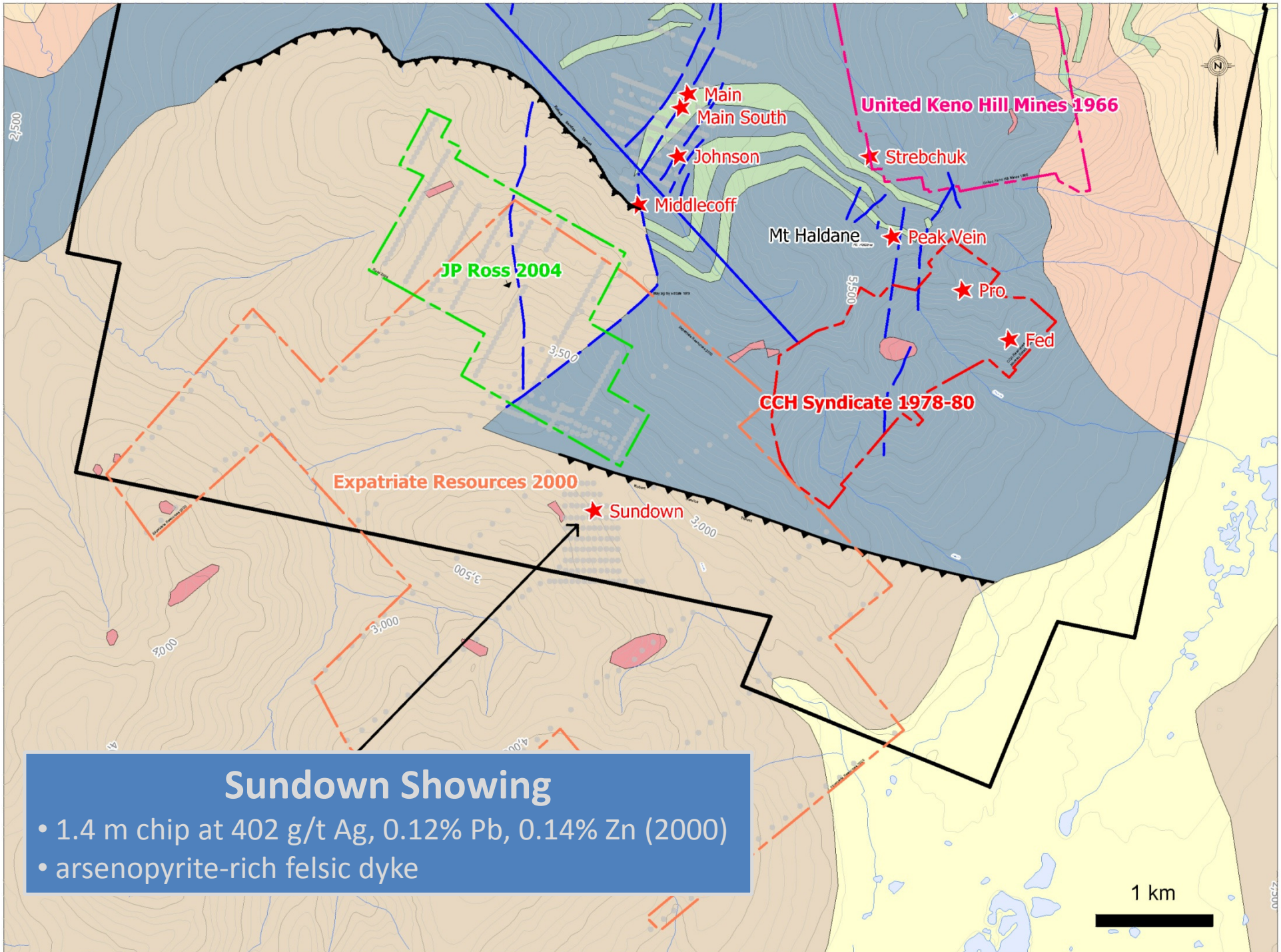
JOHNSON SOUTH



223 g/t Ag @ 3.6 m



	Showings
	Drillholes
	Soil Samples
	Lineaments
	Faults
	Cross Section Traces
	2011 Soil Anomalies
	Historic Soil Anomalies

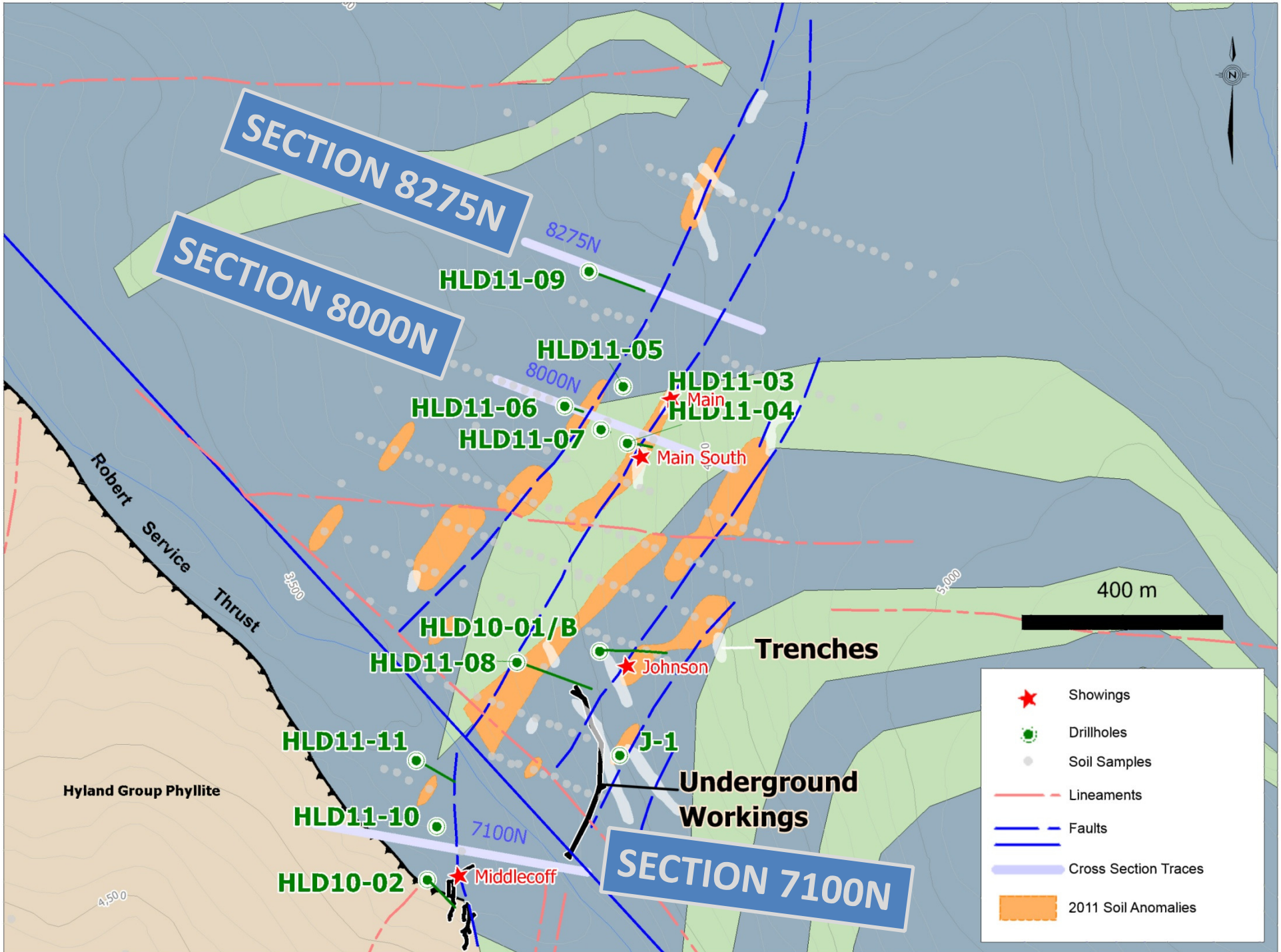


**Sundown Showing**

- 1.4 m chip at 402 g/t Ag, 0.12% Pb, 0.14% Zn (2000)
- arsenopyrite-rich felsic dyke

# Recent Exploration





**SECTION 8275N**

**SECTION 8000N**

**SECTION 7100N**

HLD11-09

HLD11-05

HLD11-03

HLD11-06

HLD11-04

HLD11-07

HLD10-01/B

HLD11-08

HLD11-11

HLD11-10

HLD10-02

Robert Service Thrust

Hyland Group Phyllite

Trenches

Underground Workings

- ★ Showings
- Drillholes
- Soil Samples
- Lineaments
- Faults
- Cross Section Traces
- 2011 Soil Anomalies

400 m



# Section 7100N

123g/t Ag  
0.09g/t Au  
3.1% Pb  
20.3% Zn  
over 1.1 m

101g/t Ag  
0.35g/t Au  
0.7% Pb  
0.7% Zn  
over 2.0 m

16.5g/t Ag  
0.7% Pb  
0.27% Zn  
over 3.89 m

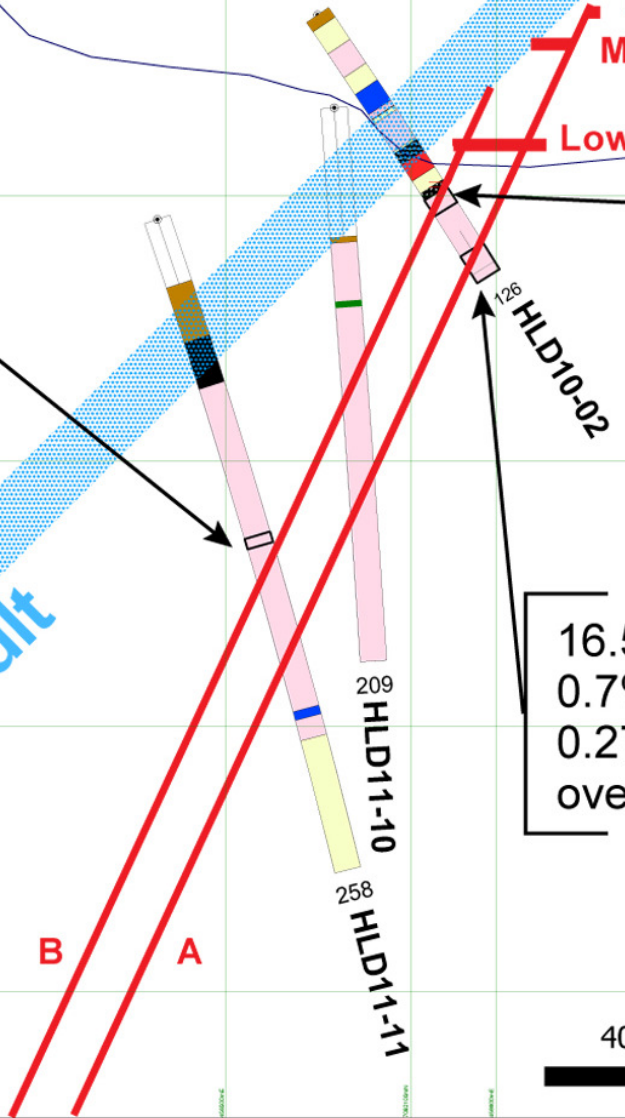
Ewing Fault

Upper  
Middle  
Lower

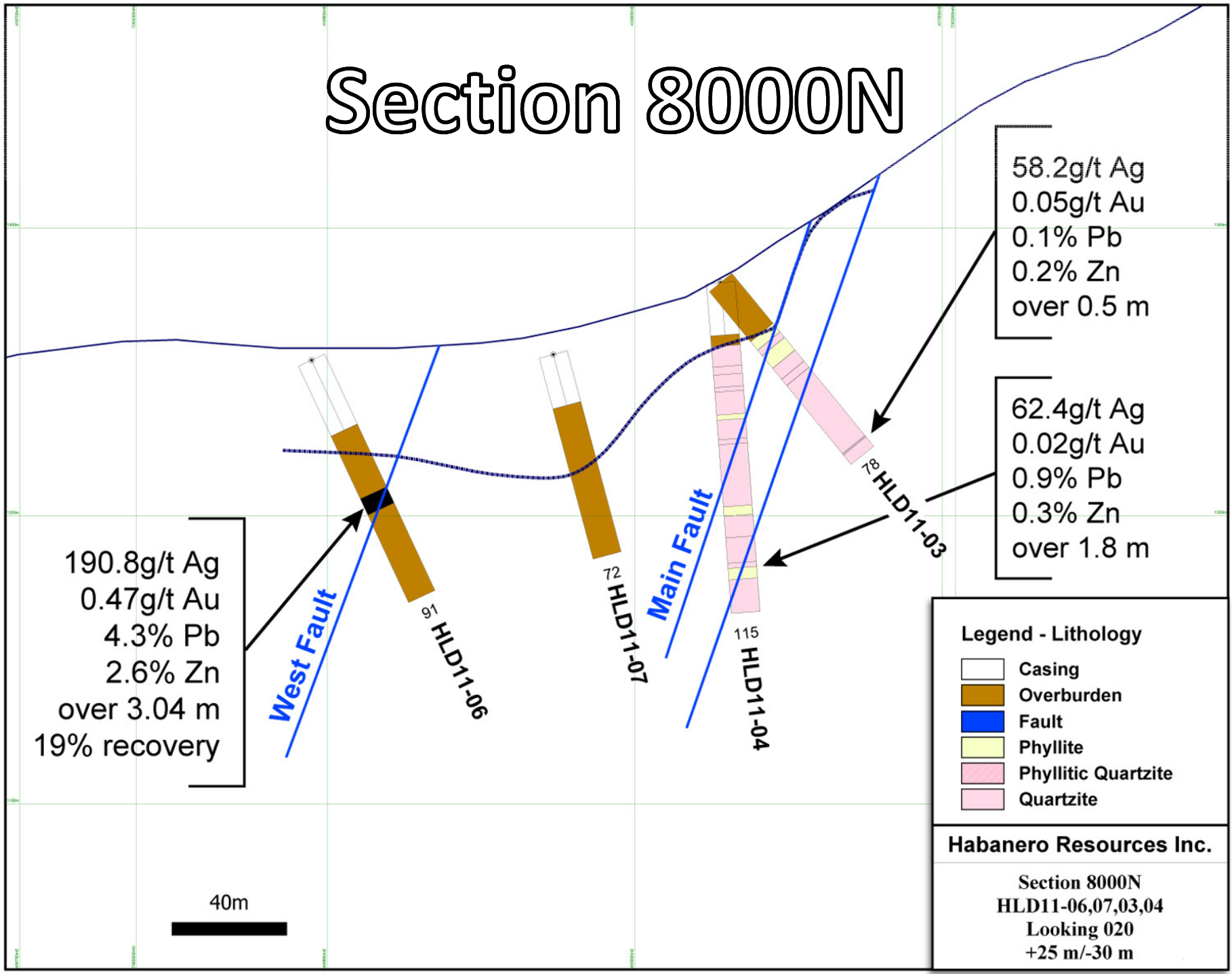
- Legend - Lithology**
- Casing
  - Overburden
  - Diorite
  - Felsic Dyke
  - Fault
  - Massive Oxides
  - Phyllite
  - Phyllitic Quartzite
  - Quartzite
  - Quartz Breccia

**Habanero Resources Inc.**

Section 7100N  
HLD11-10,11,02  
Looking 020  
+200 m/-125 m



# Section 8000N



190.8g/t Ag  
 0.47g/t Au  
 4.3% Pb  
 2.6% Zn  
 over 3.04 m  
 19% recovery

58.2g/t Ag  
 0.05g/t Au  
 0.1% Pb  
 0.2% Zn  
 over 0.5 m

62.4g/t Ag  
 0.02g/t Au  
 0.9% Pb  
 0.3% Zn  
 over 1.8 m

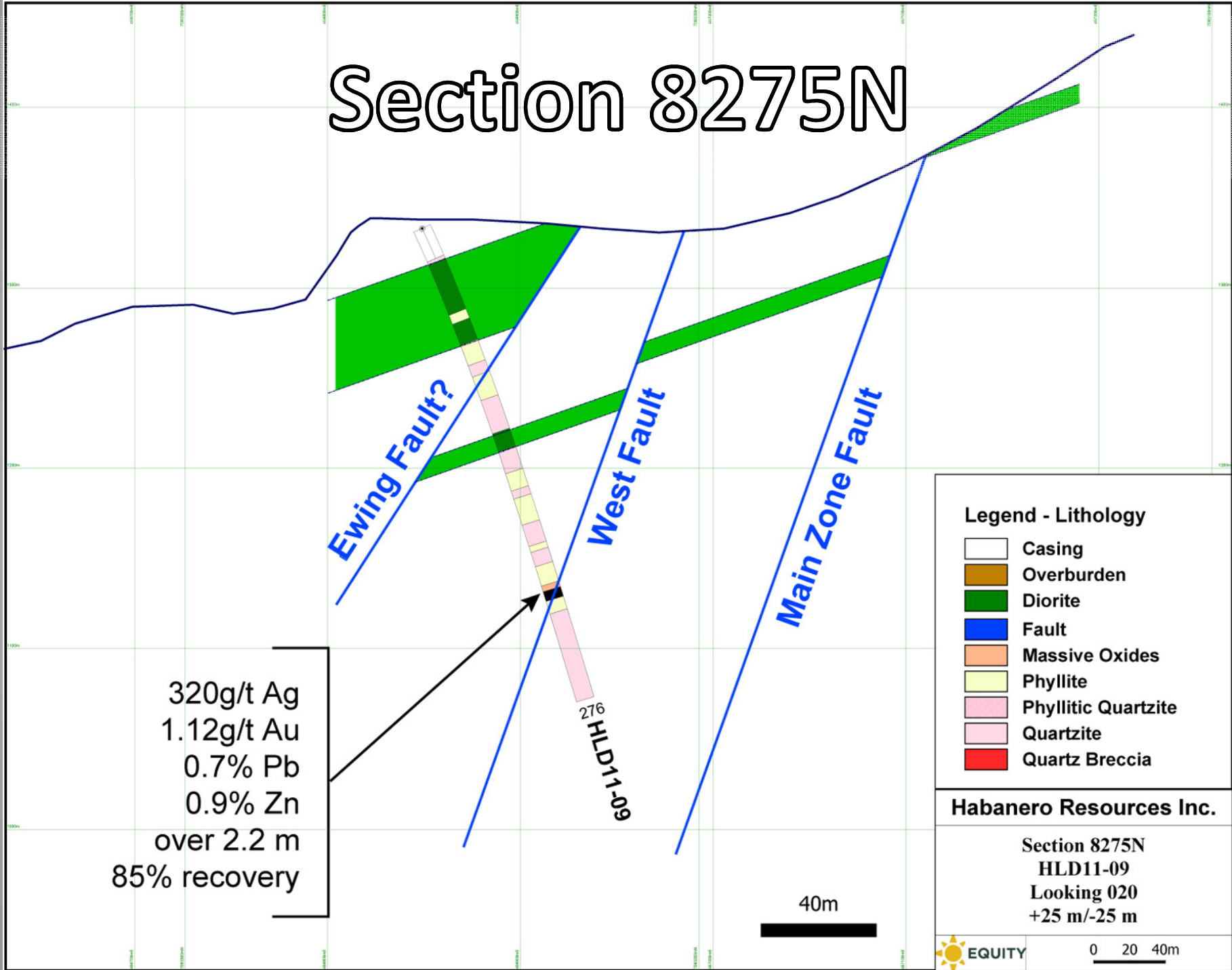
**Legend - Lithology**

- Casing
- Overburden
- Fault
- Phyllite
- Phyllitic Quartzite
- Quartzite

**Habanero Resources Inc.**

Section 8000N  
 HLD11-06,07,03,04  
 Looking 020  
 +25 m/-30 m

# Section 8275N



320g/t Ag  
1.12g/t Au  
0.7% Pb  
0.9% Zn  
over 2.2 m  
85% recovery

- Legend - Lithology**
- Casing
  - Overburden
  - Diorite
  - Fault
  - Massive Oxides
  - Phyllite
  - Phyllitic Quartzite
  - Quartzite
  - Quartz Breccia

**Habanero Resources Inc.**

Section 8275N  
HLD11-09  
Looking 020  
+25 m/-25 m



HLD-11-09-Bx46 206.27-210.79 m

206.3

Barcode label

Barcode label

209.5

Barcode label

Barcode label

Barcode label

HLD-11-09-Bx47 210.79-215.49 m

214.5

Barcode label

Barcode label

320g/t Ag, 1.12g/t Au, 0.7g/t Pb, 0.9g/t Zn

2.2 m

215.49

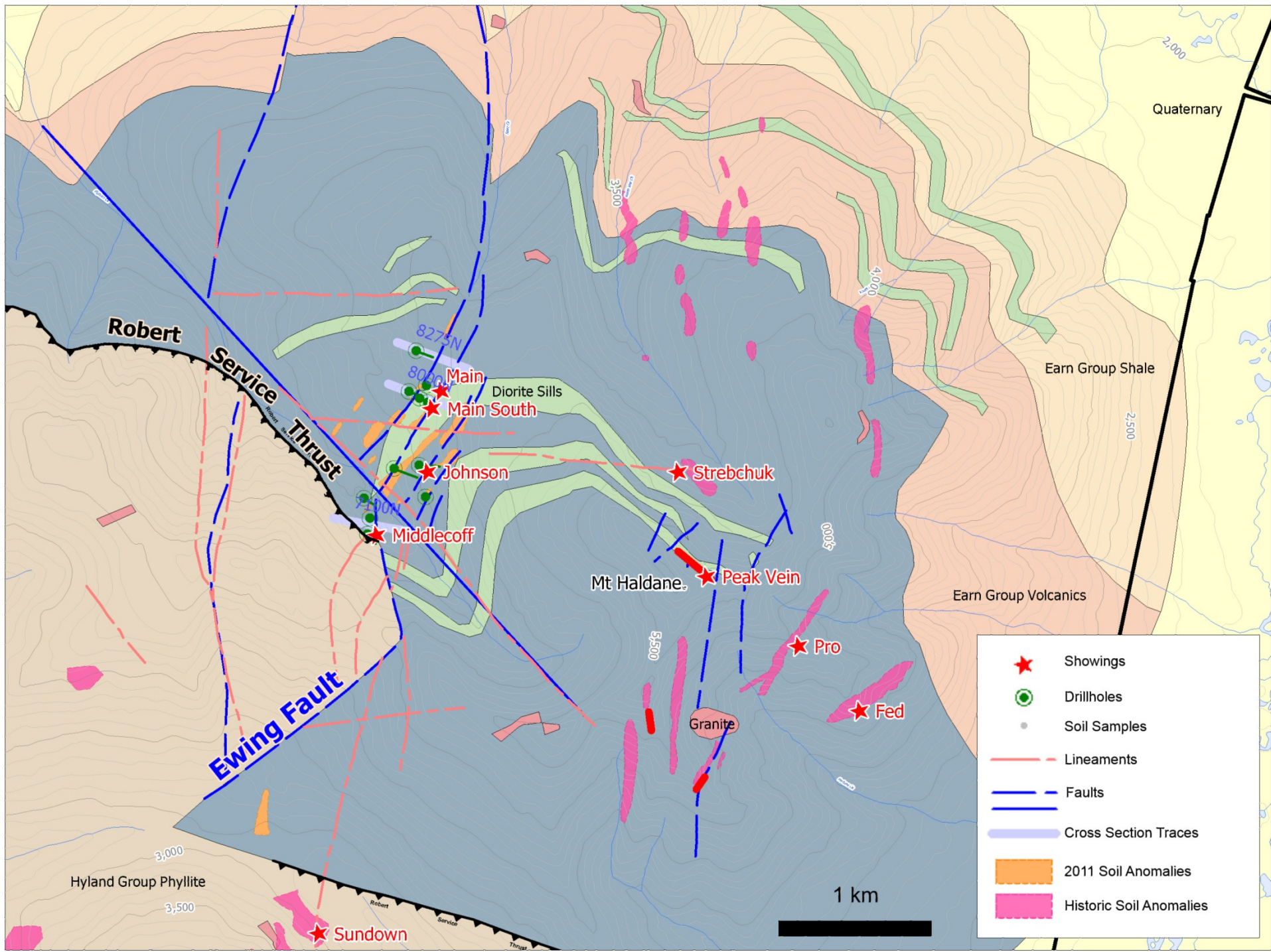
HLD-11-09-Bx48 215.49-219.65m

218.54



## The Haldane property shares several geological characteristics with the Keno Hill mining camp:

- ✓ Quartzite (Keno Hill) host.
- ✓ Proximity to Robert Service Thrust
- ✓ **Vein and breccia mineralization hosted by complex fault systems**
- ✓ Galena, sphalerite, plus tetrahedrite and possibly pyrargyrite
- ✓ quartz and manganiferous-carbonate gangue are prevalent
- ✓ better grade commonly in proximity to northwest cross-faults



- ★ Showings
- Drillholes
- Soil Samples
- Lineaments
- Faults
- Cross Section Traces
- 2011 Soil Anomalies
- Historic Soil Anomalies

A photograph of a man with a red backpack looking into the open doorway of a rustic wooden cabin. The cabin is built with horizontal wooden planks and has a weathered roof. The scene is set in a lush green forest with tall trees and dense foliage. The man is wearing a green long-sleeved shirt and grey pants. The overall atmosphere is serene and natural.

Thanks

Habanero Resources Inc  
Equity Exploration Consultants Ltd.