



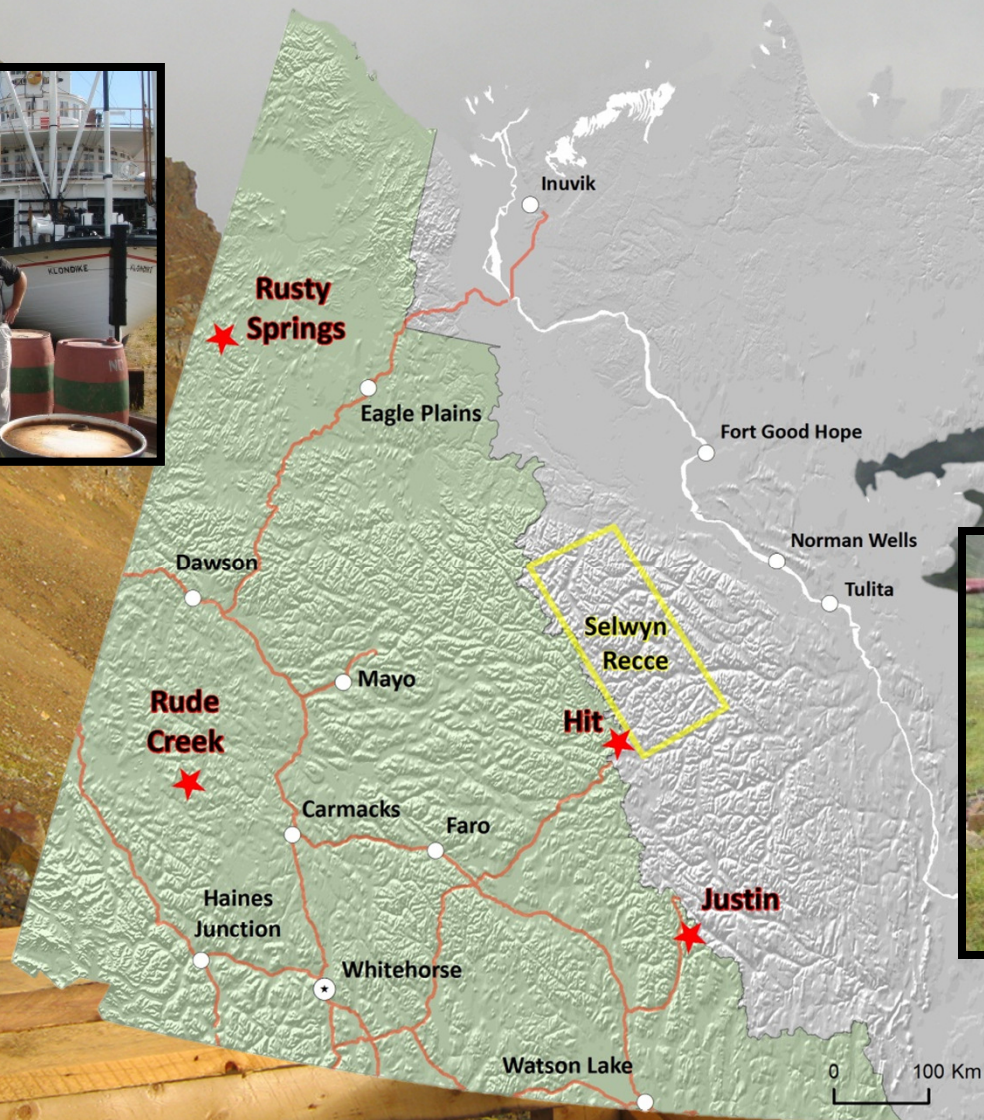
*Justin Project:  
Intrusion Related Gold Discovery  
in the Southeast Yukon*

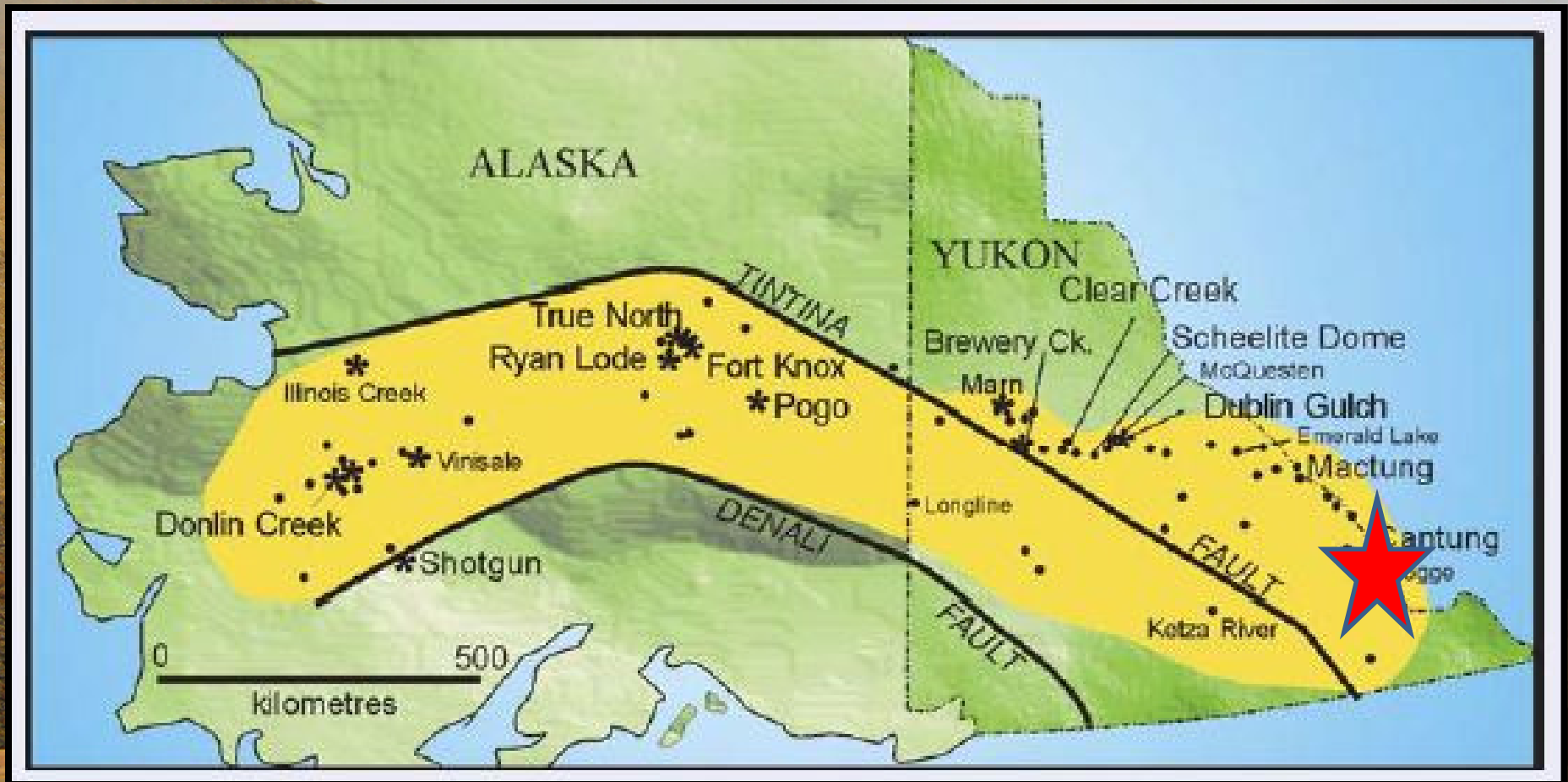
## Forward Looking Statements

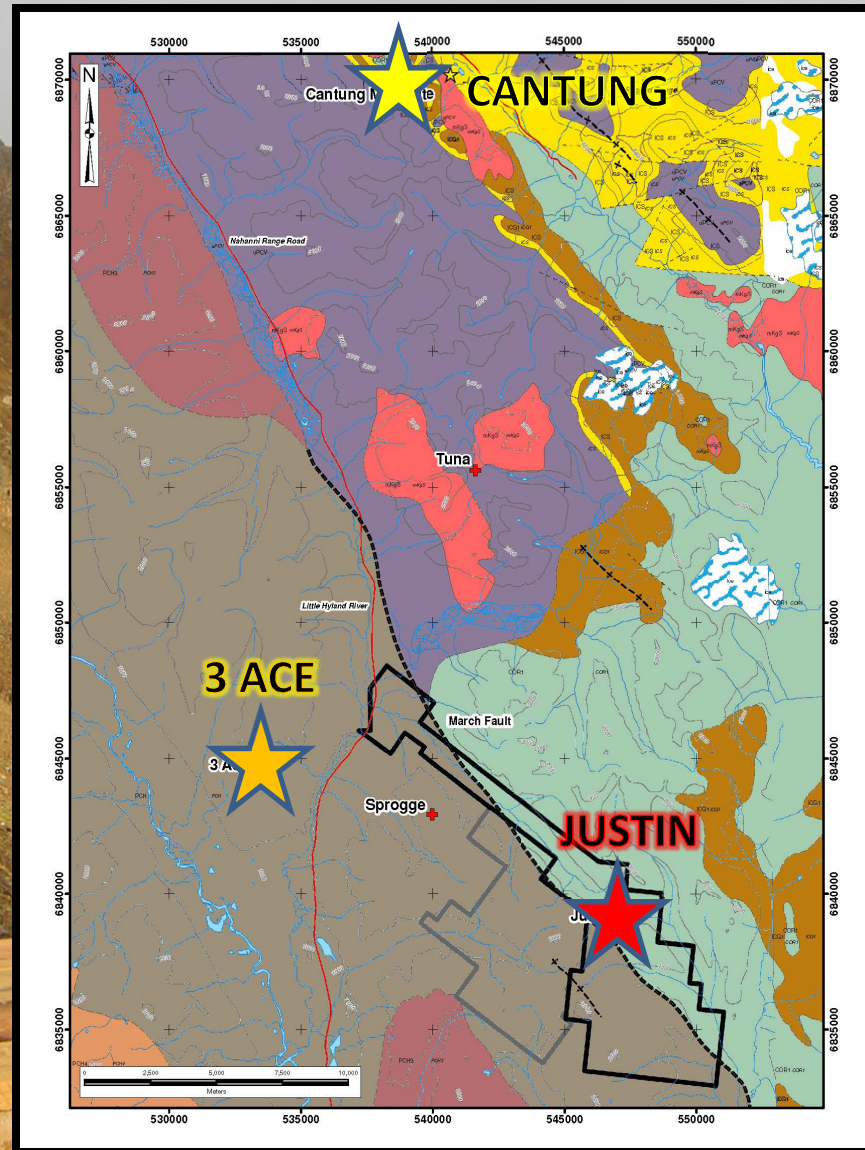
*The following presentation may contain forward-looking statements including but not limited to comments regarding the timing and content of upcoming work programs, geological interpretations, capital and other costs and credits, timing for and results of feasibility study and other programs, receipt of property titles, potential mineral recovery processes and other related matters. Forward looking statements address future events and conditions and therefore involve inherent risks and uncertainties. Actual results may differ materially from those currently anticipated in such statements. No representation or prediction is intended as to the results of future work, nor can there be any promise that estimates and projections herein will be sustained in future work or that the Project will otherwise prove to be Economic. The following presentation contains certain "Forward-Looking Statements" within the meaning of Section 21E of the United States Securities Exchange Act of 1934, as amended. All statements, other than statements of historical fact, included herein are forward-looking statements that involve various risks and uncertainties. There can be no assurance that such statements will prove to be accurate, and actual results and future events could differ materially from those anticipated in such statements. Important factors that could cause actual results to differ materially from the Company's expectations are disclosed in the Company's documents filed from time to time with the British Columbia Securities Commission and the United States Securities & Exchange Commission.*

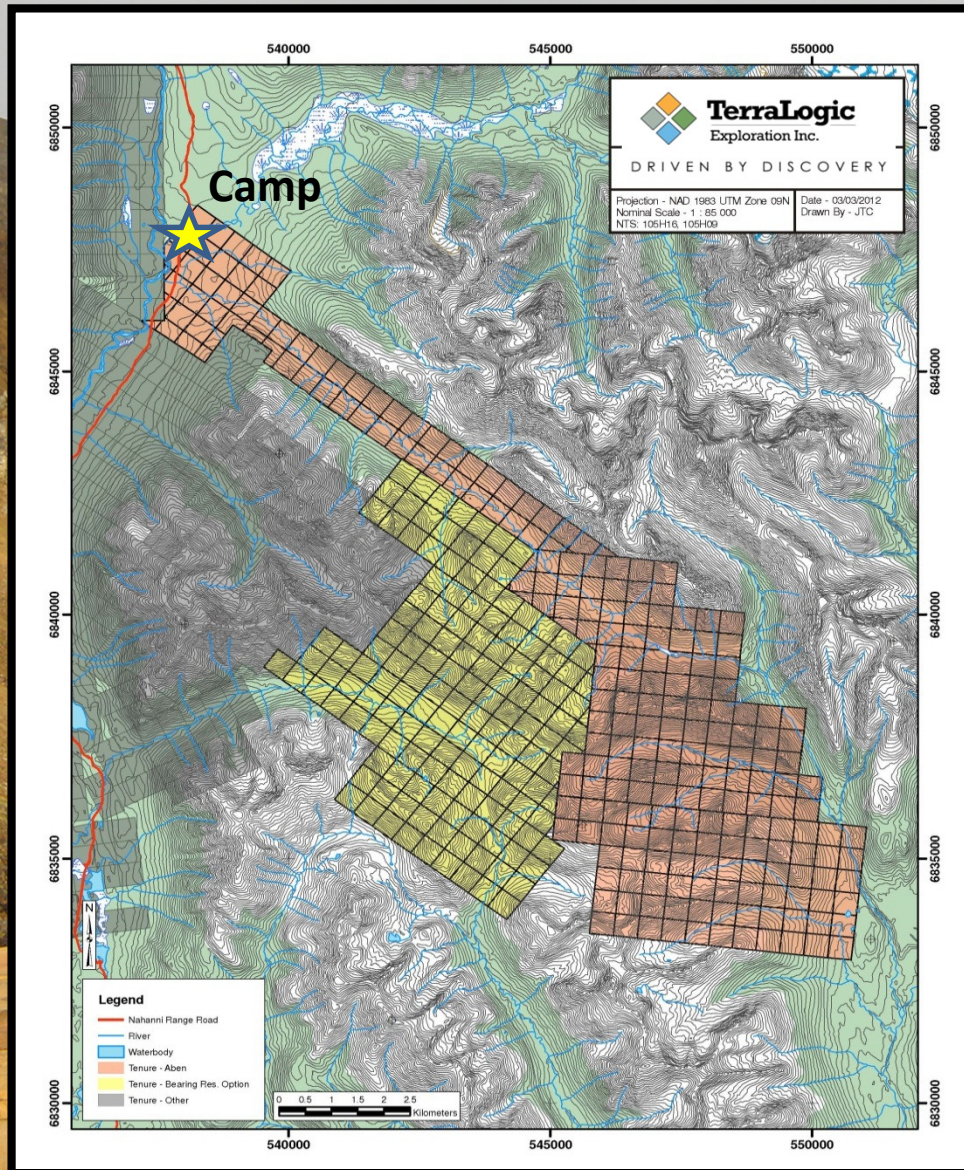
## Qualified Person

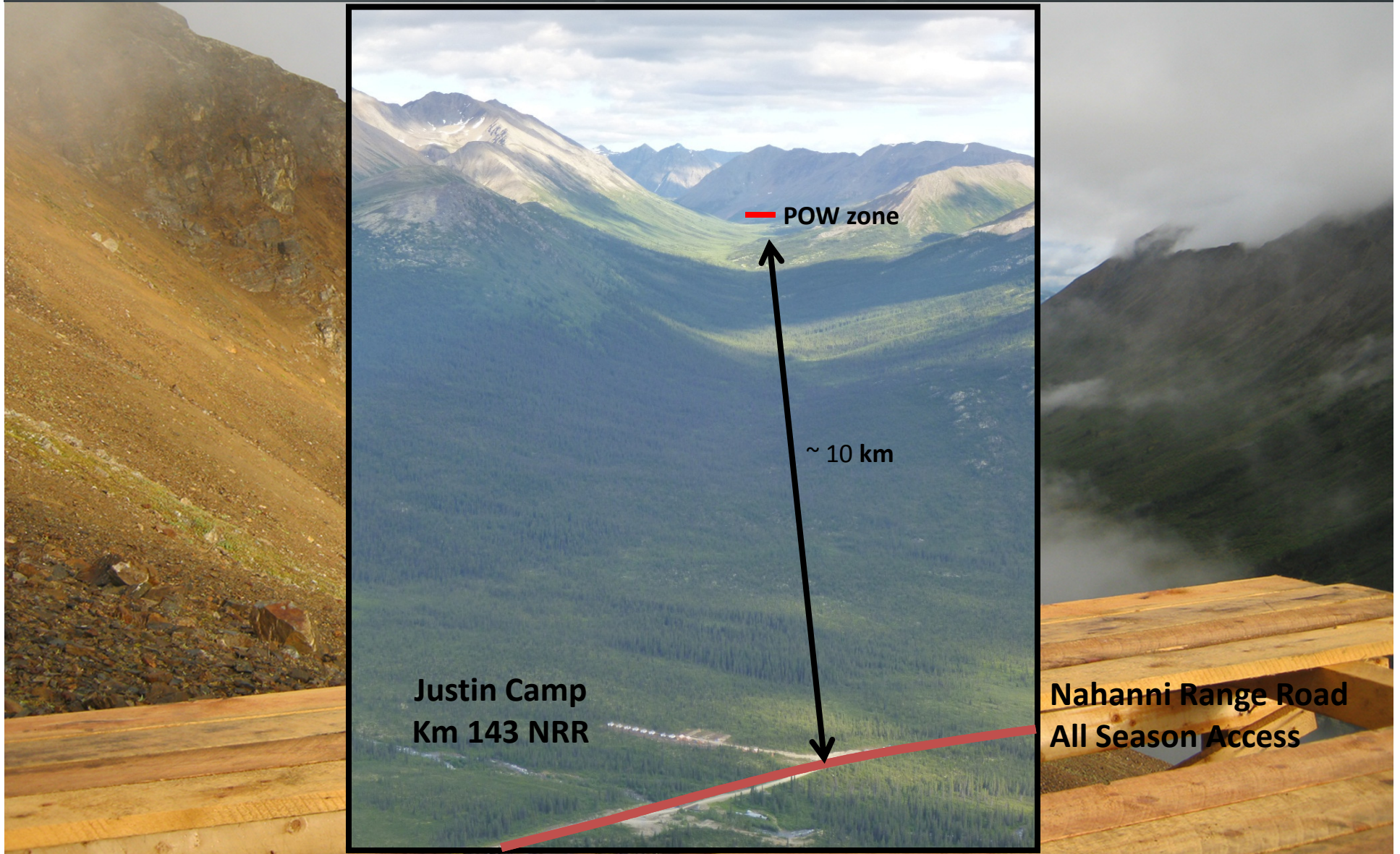
*Tim Termuende P.Geo, and a director of Aben Resources, is the Qualified Person as defined by National Instrument 43-101 and has reviewed and approved the technical information in this presentation.*











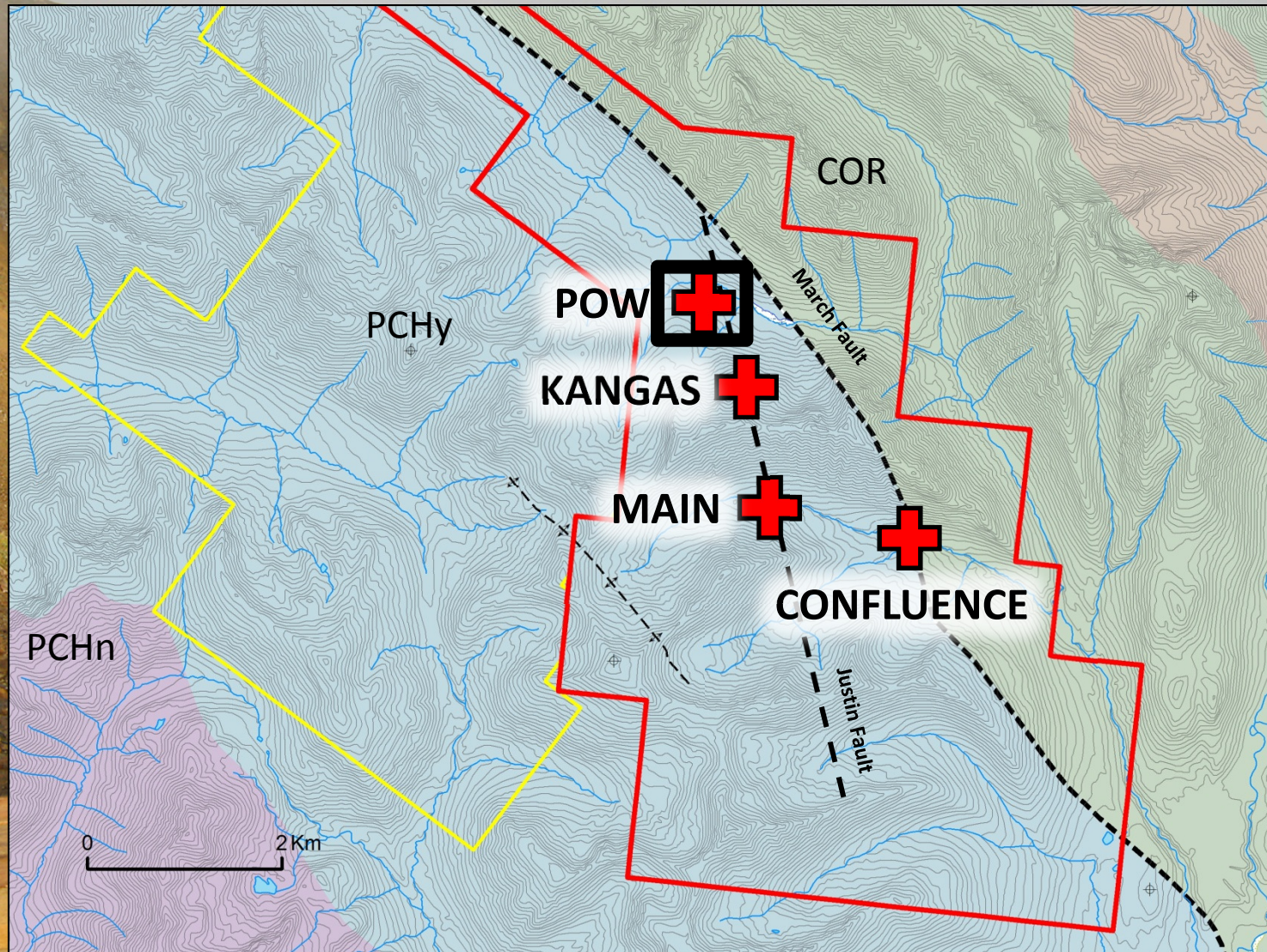
**Justin Camp  
Km 143 NRR**

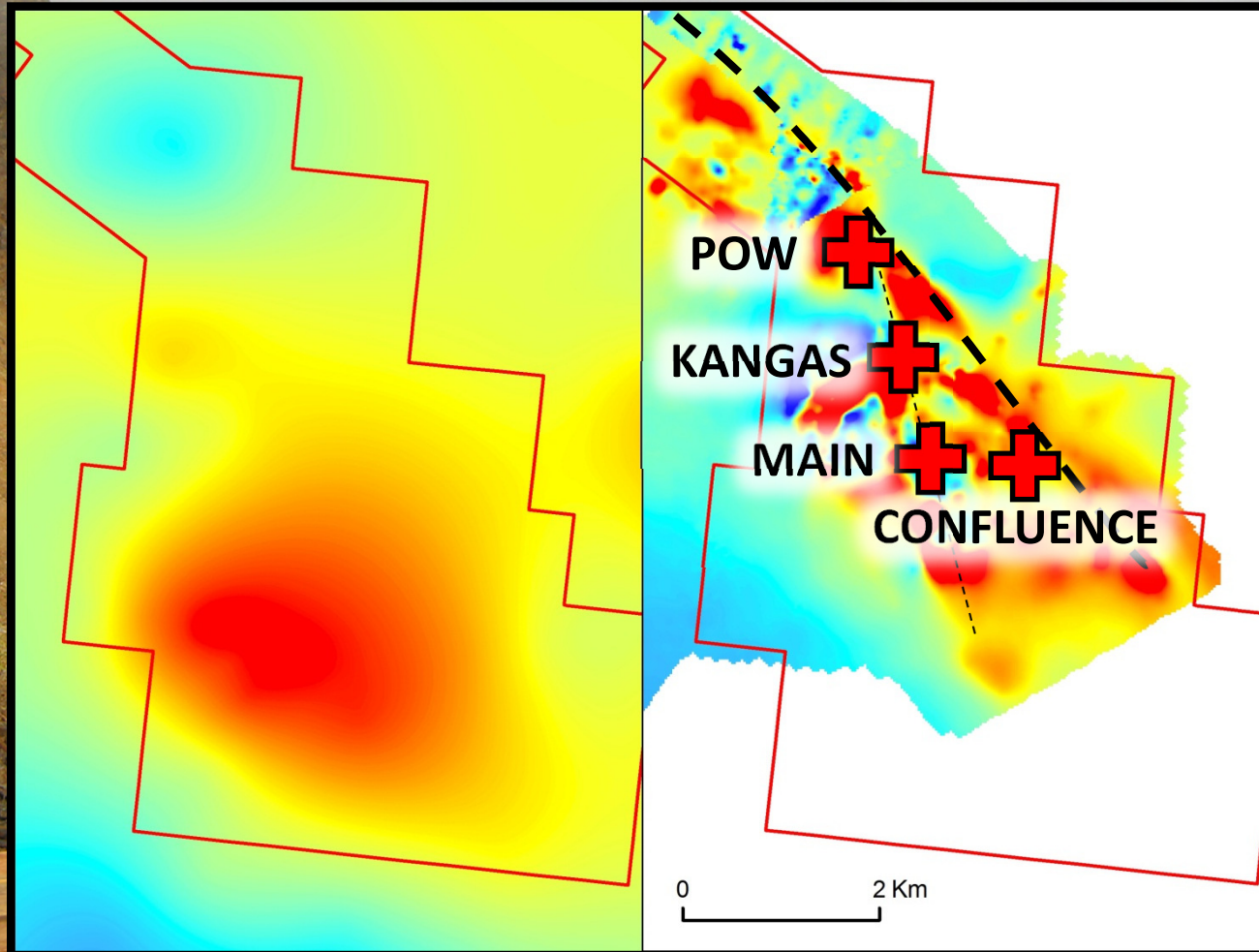
**POW zone**

**~ 10 km**

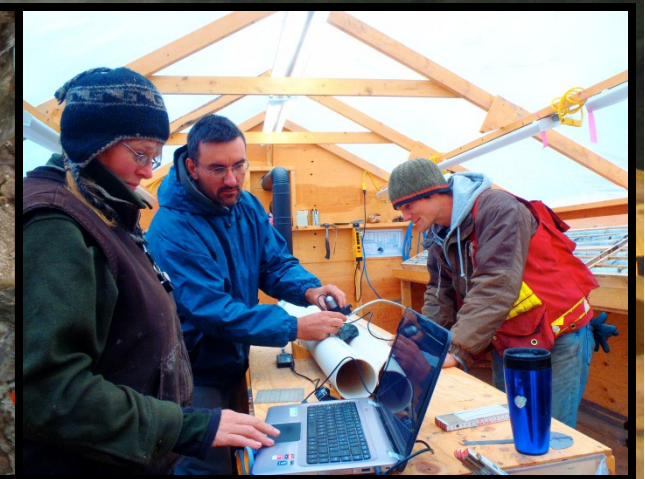
**Nahanni Range Road  
All Season Access**

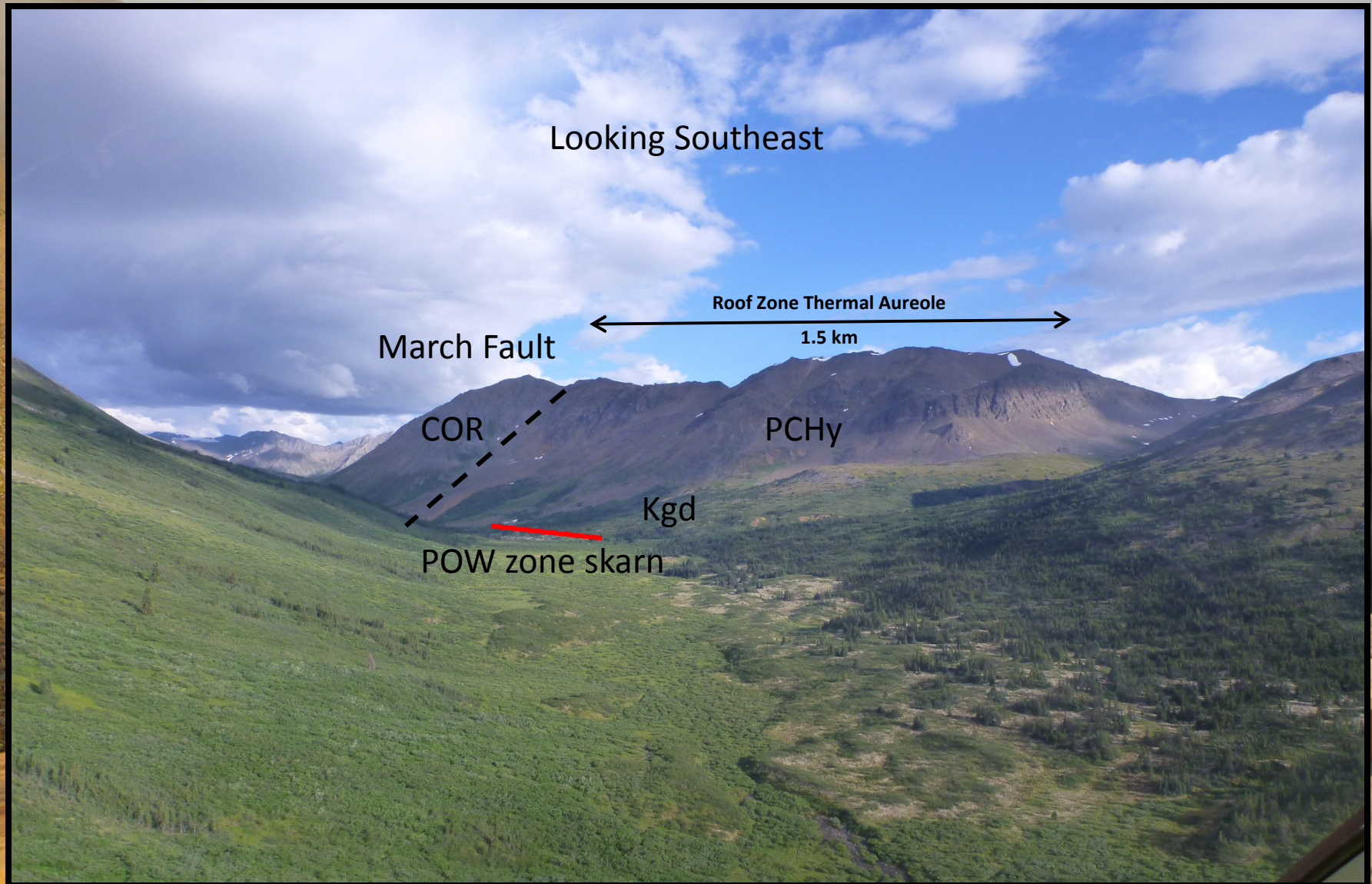


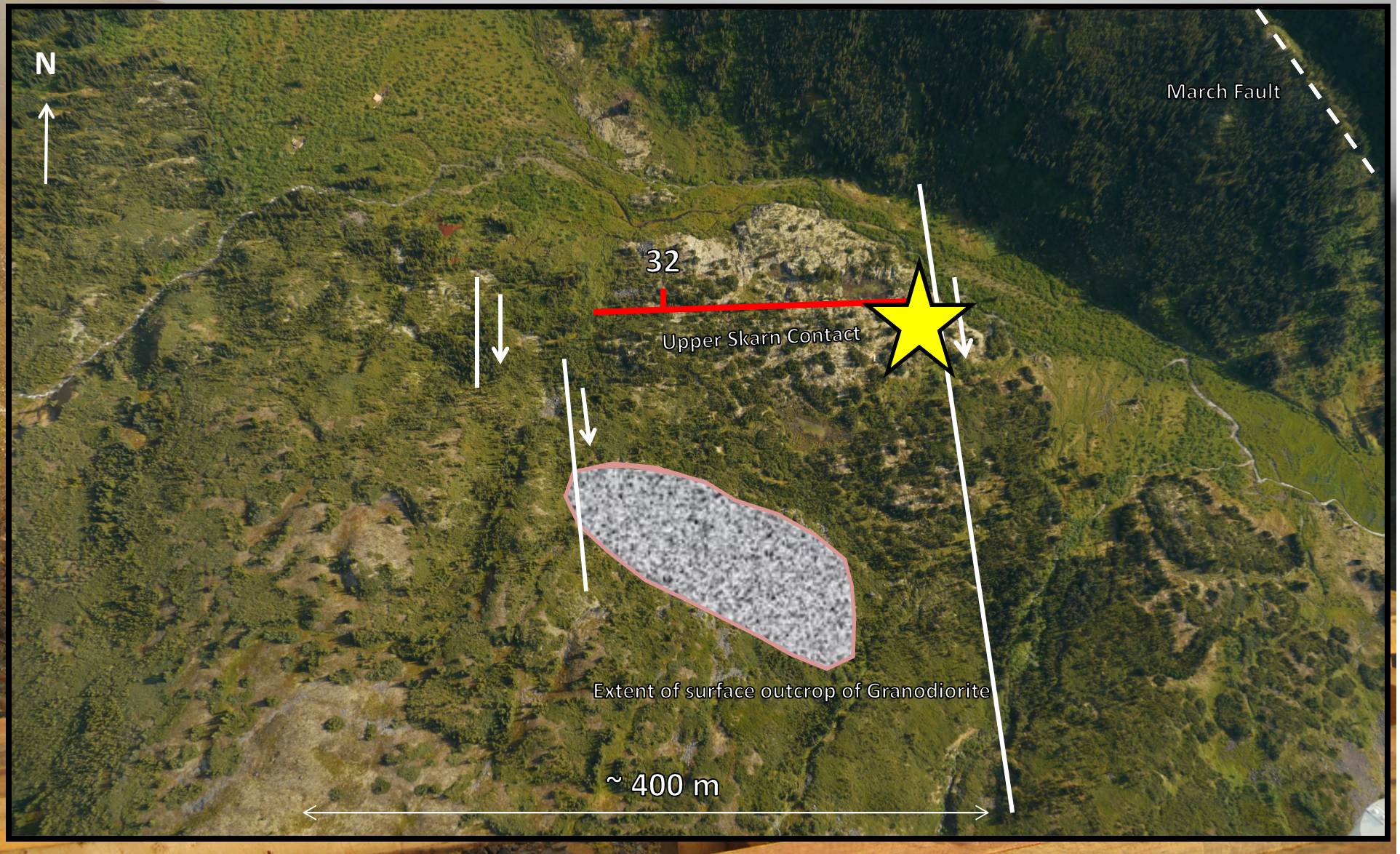


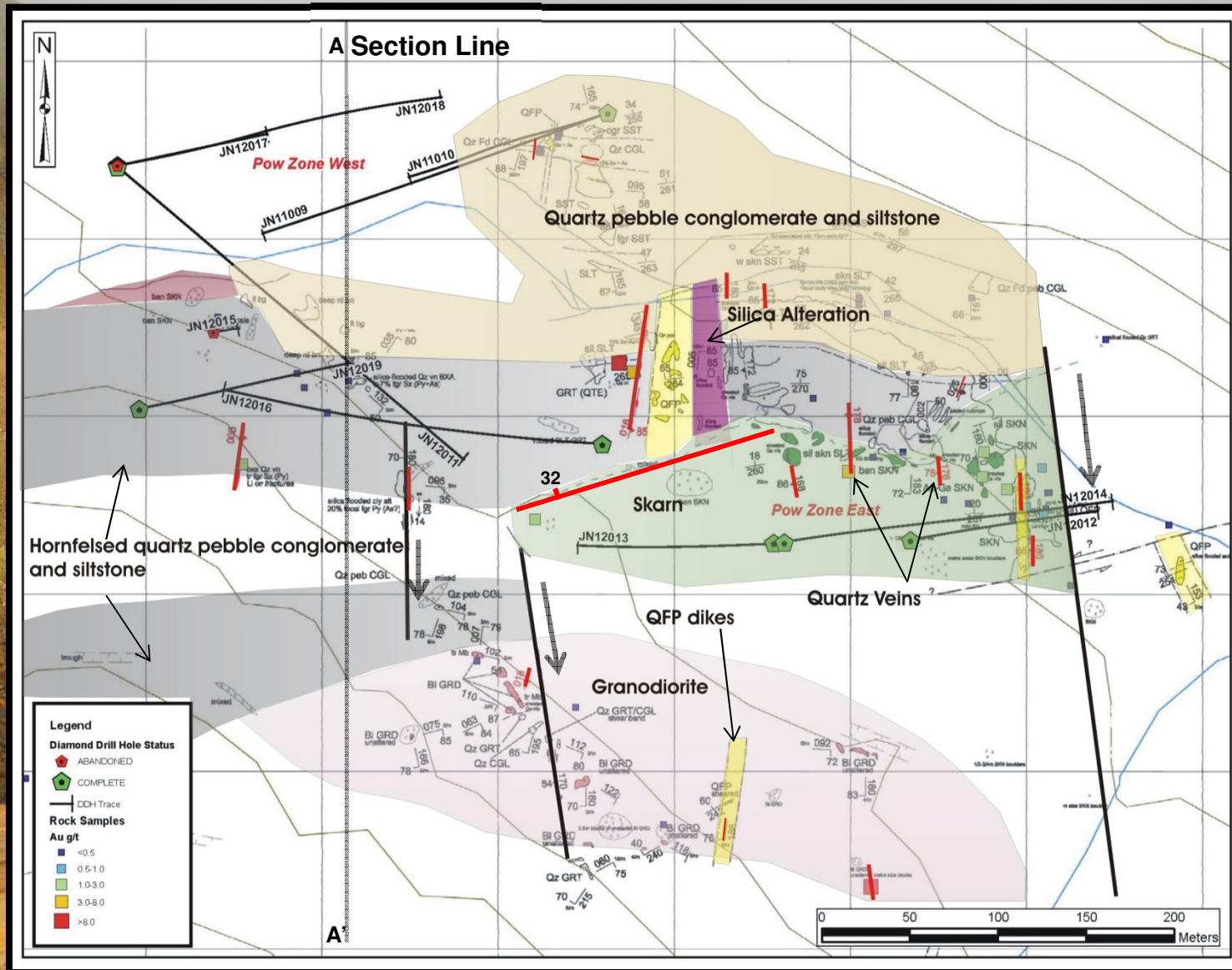


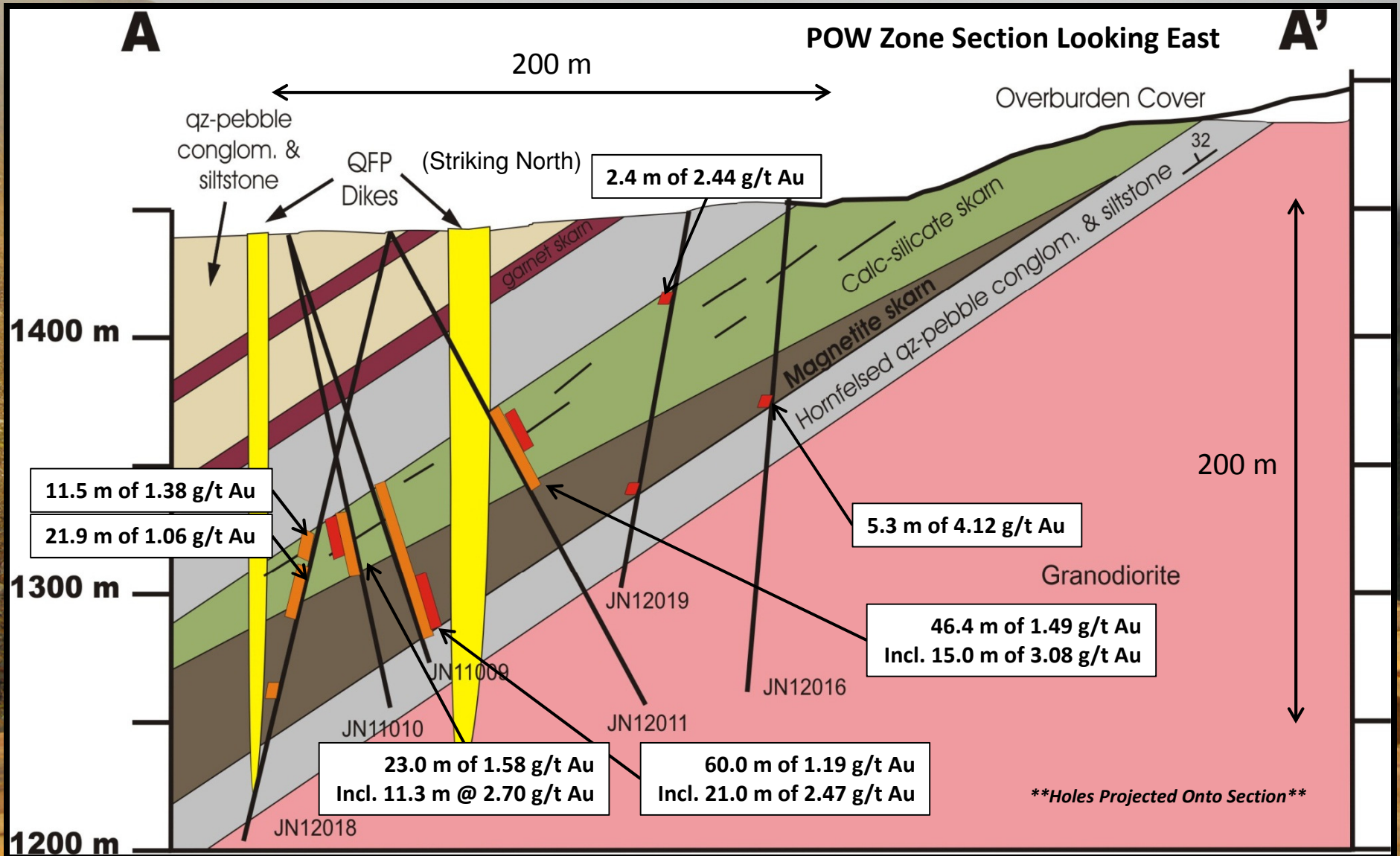
Regional Airborne ~ 200 m line spacing    Property Airborne ~ 100 m line spacing

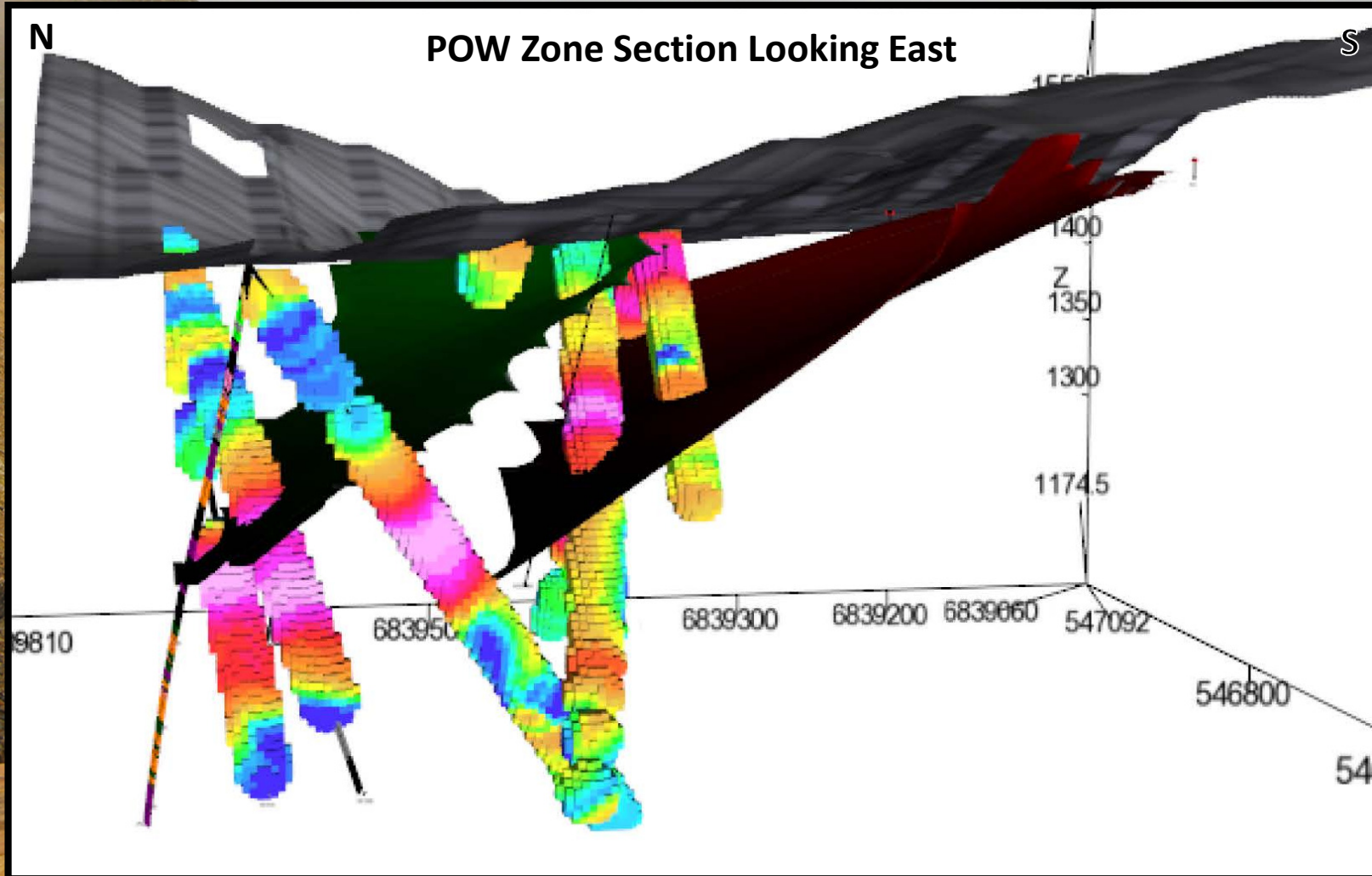




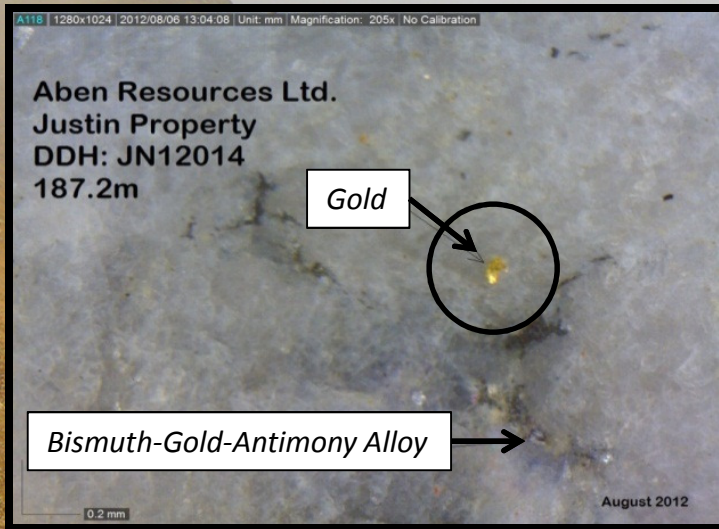




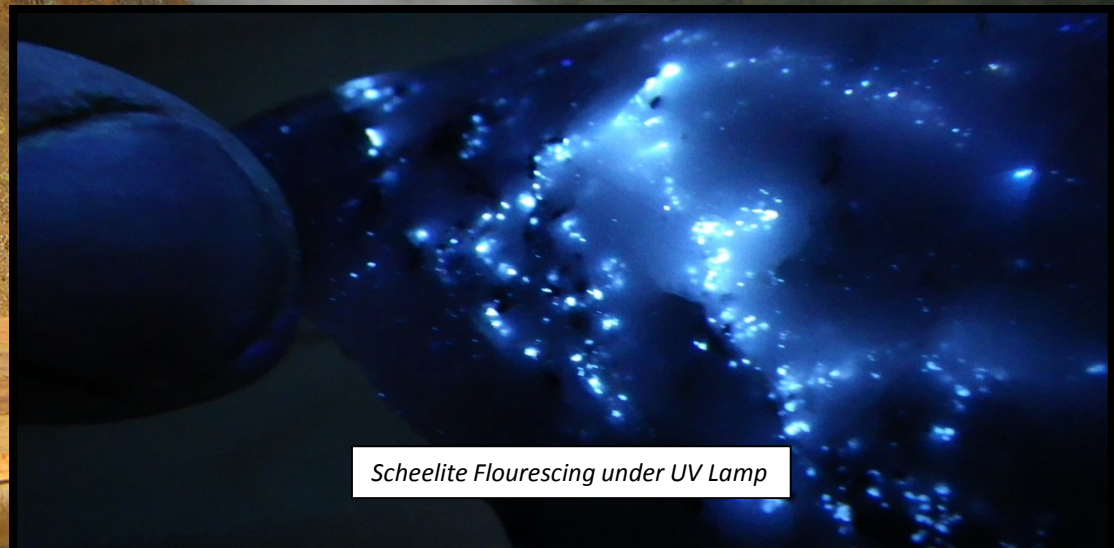




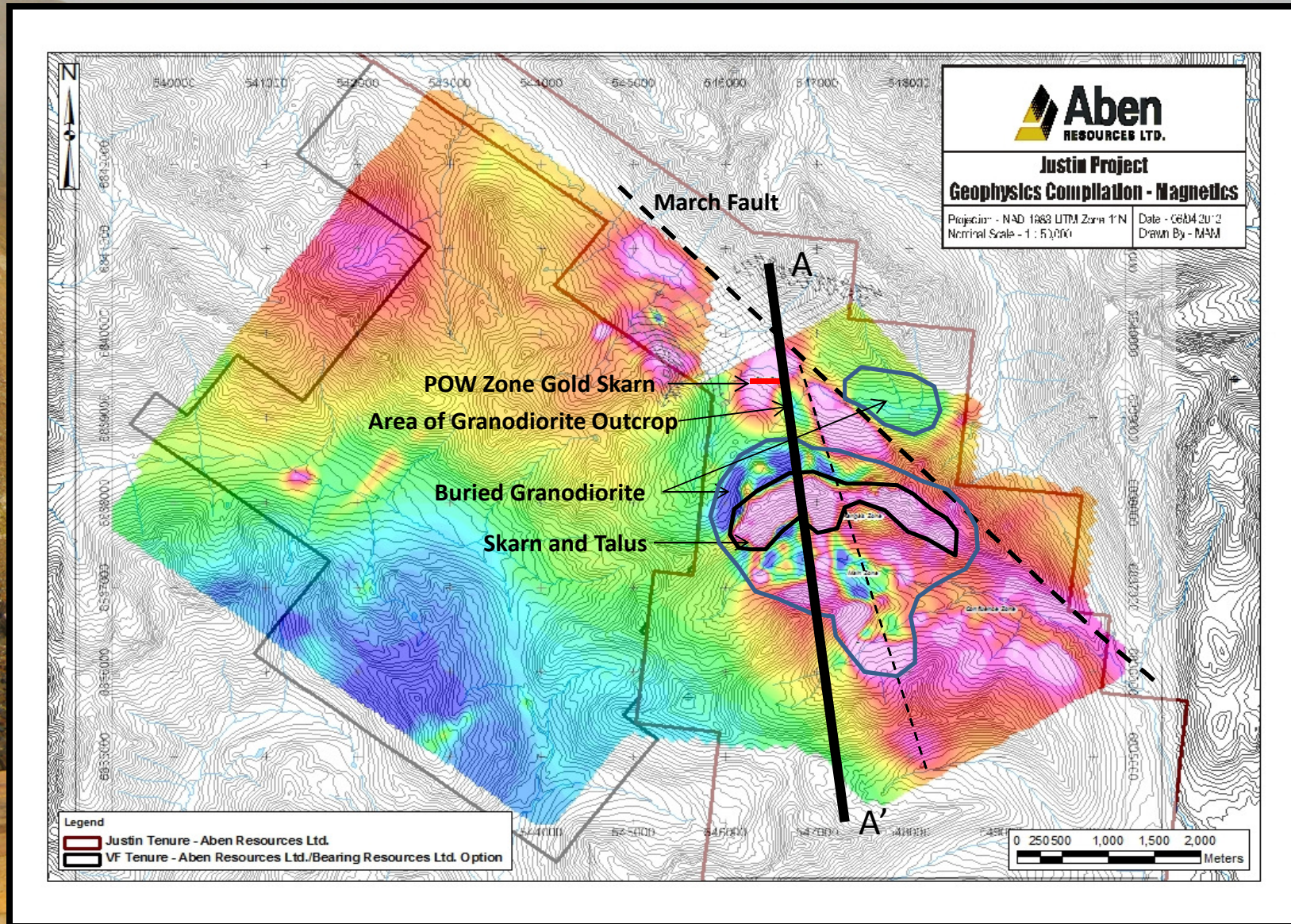


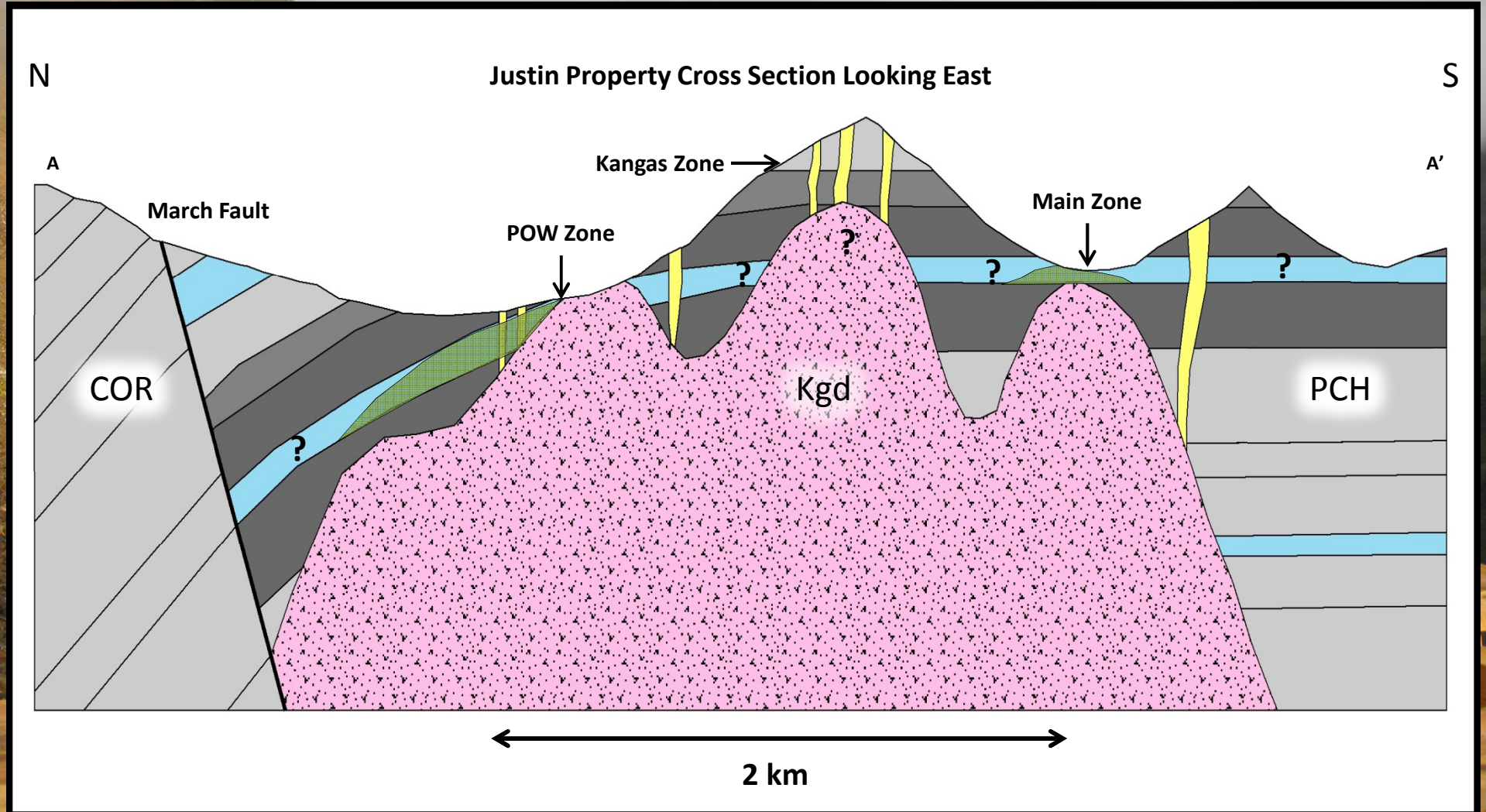


Grades Range  
from 0.5 g/t Au  
up to 22.0 g/t Au  
and are hosted in  
several different  
settings  
representing  
multi-stage  
mineralization









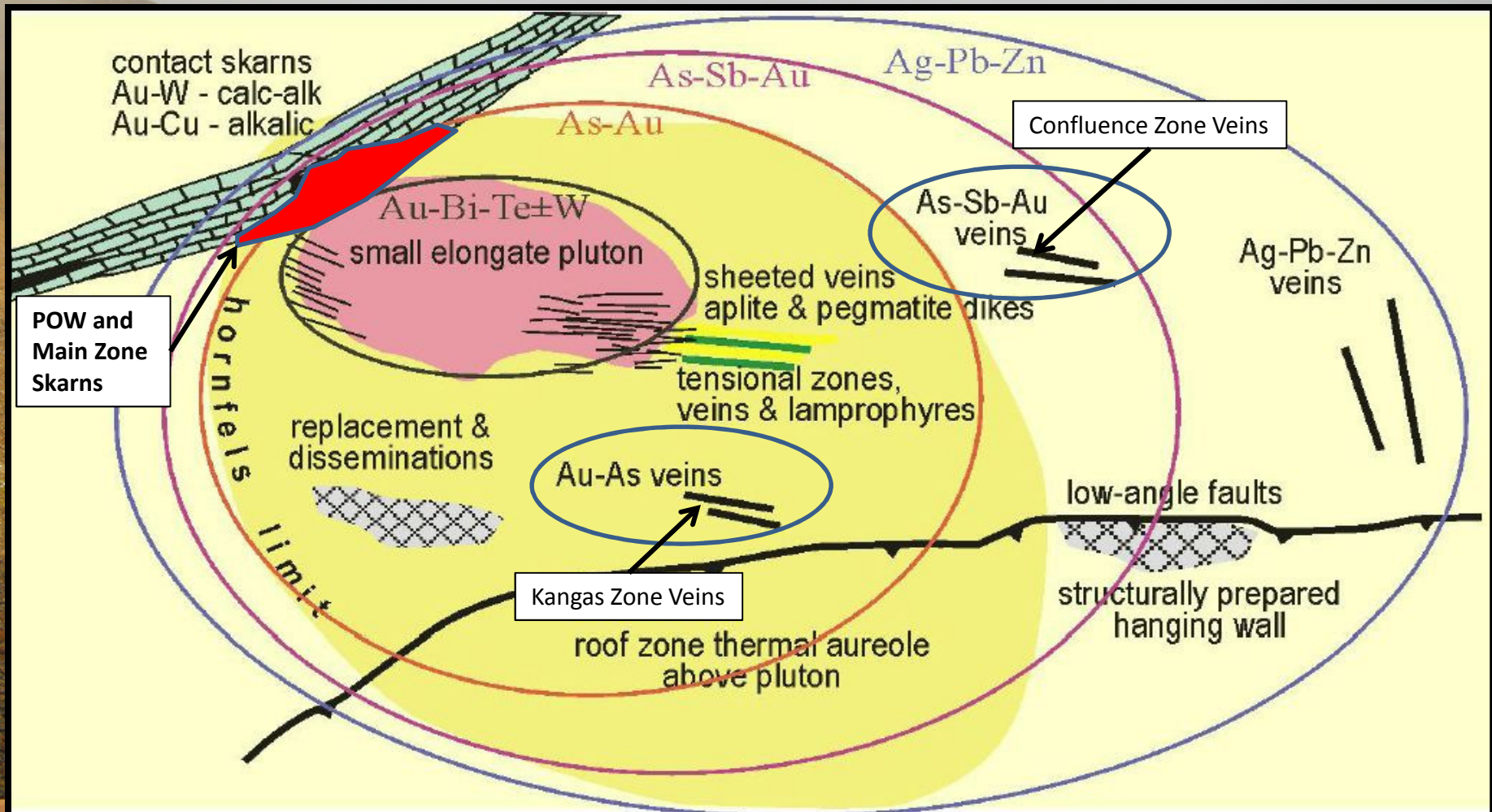
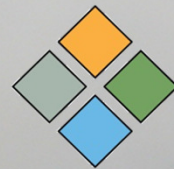


Figure 2. General plan model of intrusion-related gold systems from the Tintina Gold Province. Note the wide range of mineralization styles and geochemical variations that vary predictably outward from a central pluton (modified from Hart et al., 2002).

## Justin Highlights

- ❖ *Recognition of IRGS in an underexplored region of the Yukon;*
- ❖ *Only 2500 meters have been drilled to date at the POW zone tracing mineralization over an area measuring 400 meters x 200 meters which is still open in all directions;*
- ❖ *Close proximity to infrastructure – 10km to all season road;*
- ❖ *Exploration to date has created a small window into the system, which can be used to explore other high priority targets on the property.*



**TerraLogic**  
Exploration Inc.



Driftwood DIAMOND Drilling

DRIVEN BY DISCOVERY



**Acknowledgements**

*James Magun Contracting*

*KPI Northern Ltd.*

*Yukon Government*

*Small's Expediting*

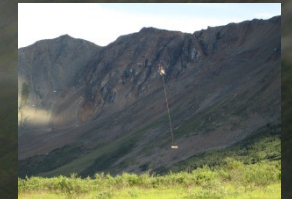
*Twilite Services*

*Hyland Gold Expediting*

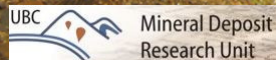
*Kilrich Industries Ltd.*

*General Waste Management*

*K&K Rentals*



**Kluane Airways Ltd**



ACCESS

