

Overview of YGS Activities 2012



Carolyn Relf



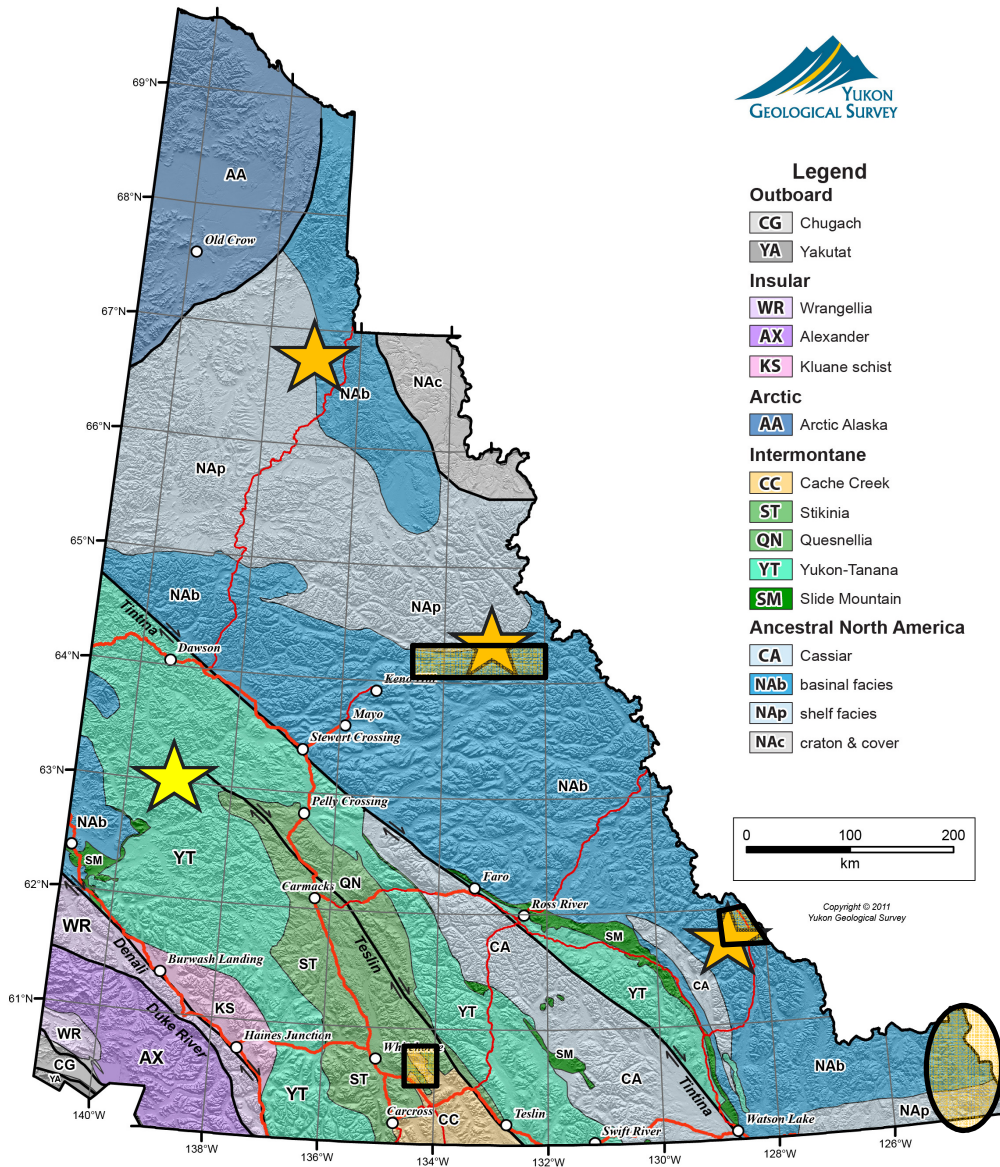
YGS Staff



Bedrock Projects

2012 Field work:

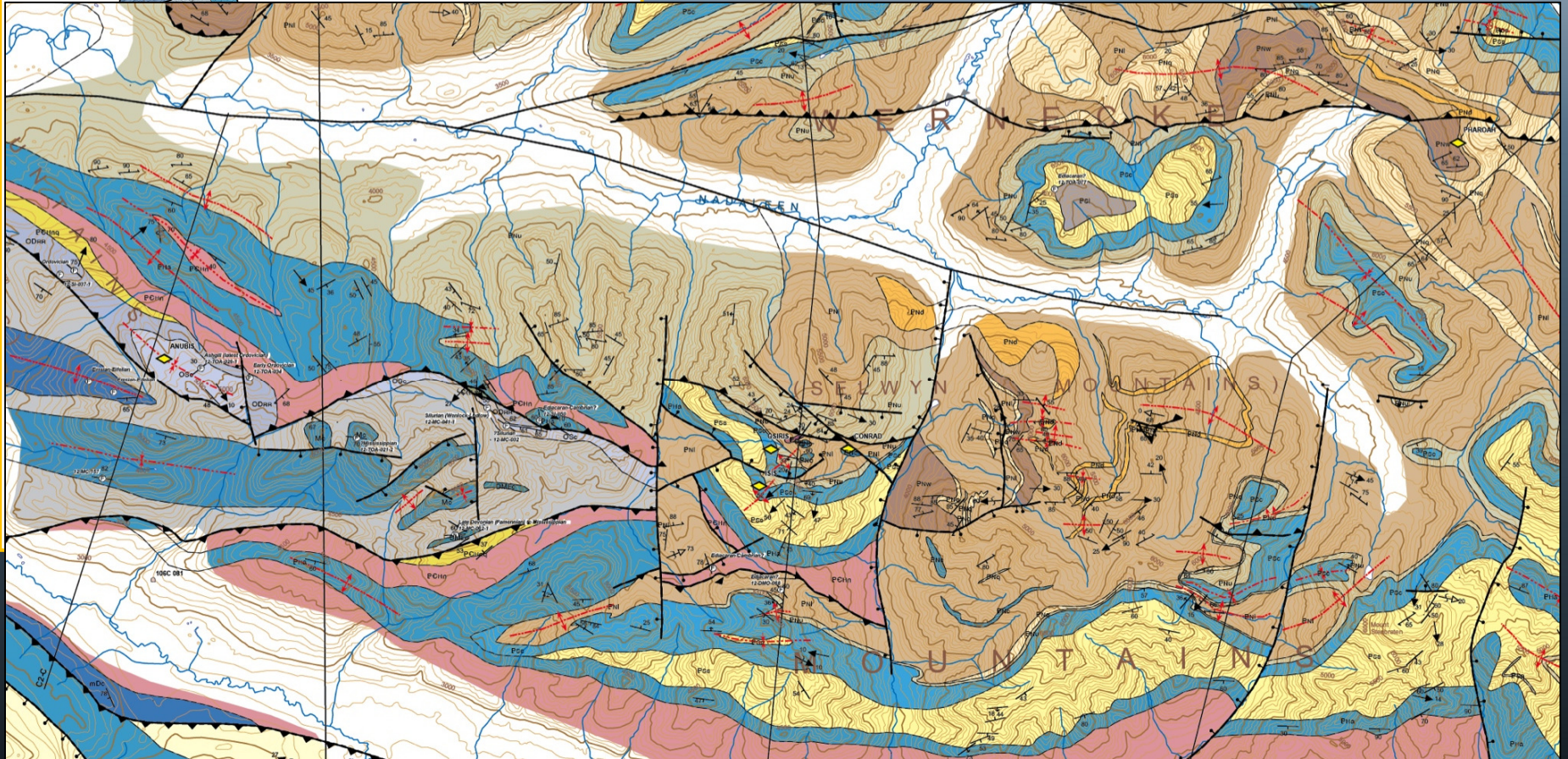
- Rackla belt (Colpron et al)
- Liard Basin (Fraser et al)
- NE Frances Lake (Moynihan)
- Touleary & Regional pyrite chemistry (Sack)
- Tagish/Michie Creek (Bickerton)



Rackla Project



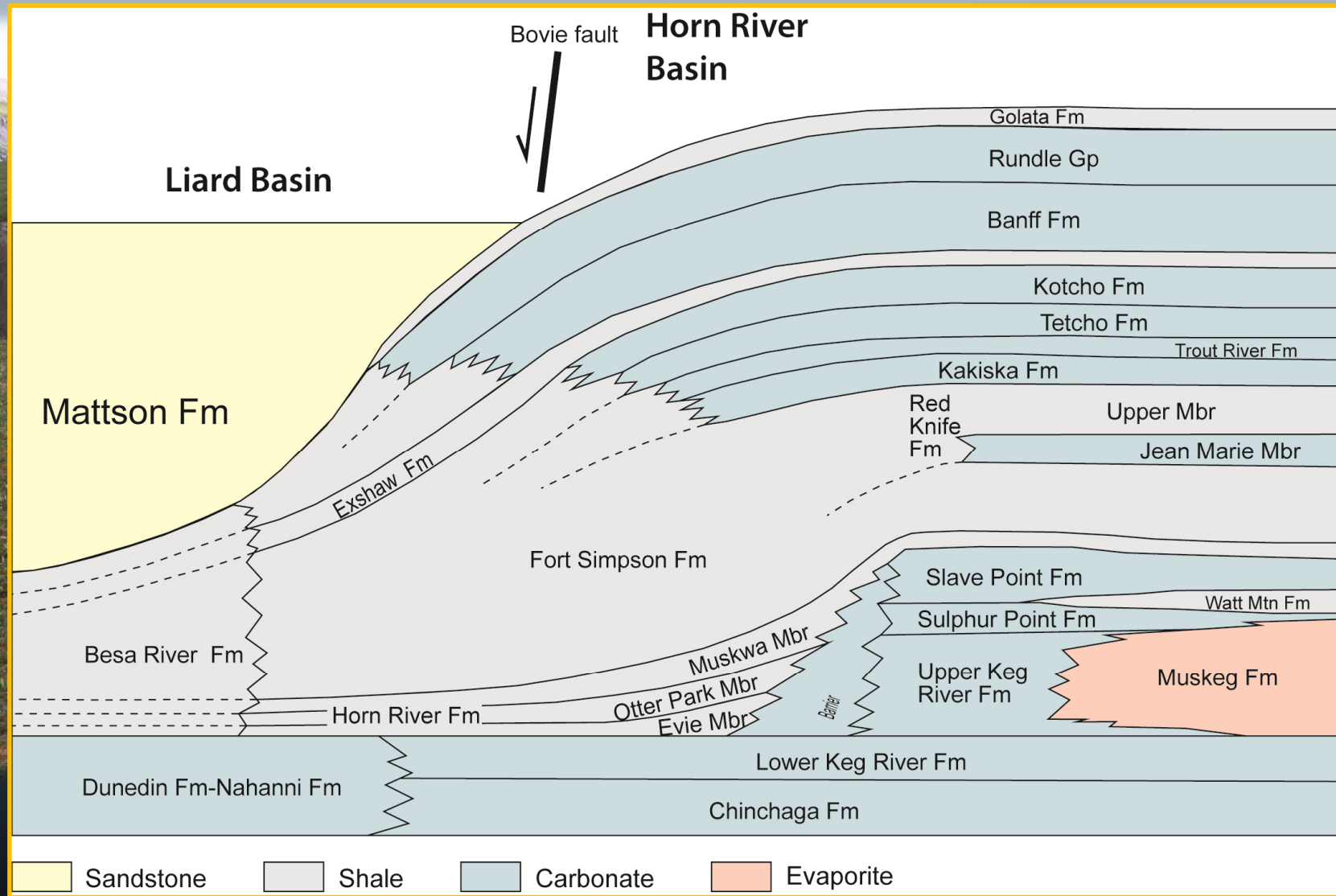
Legend
Outboard
CG Chugach
YA Yakutat
Insular



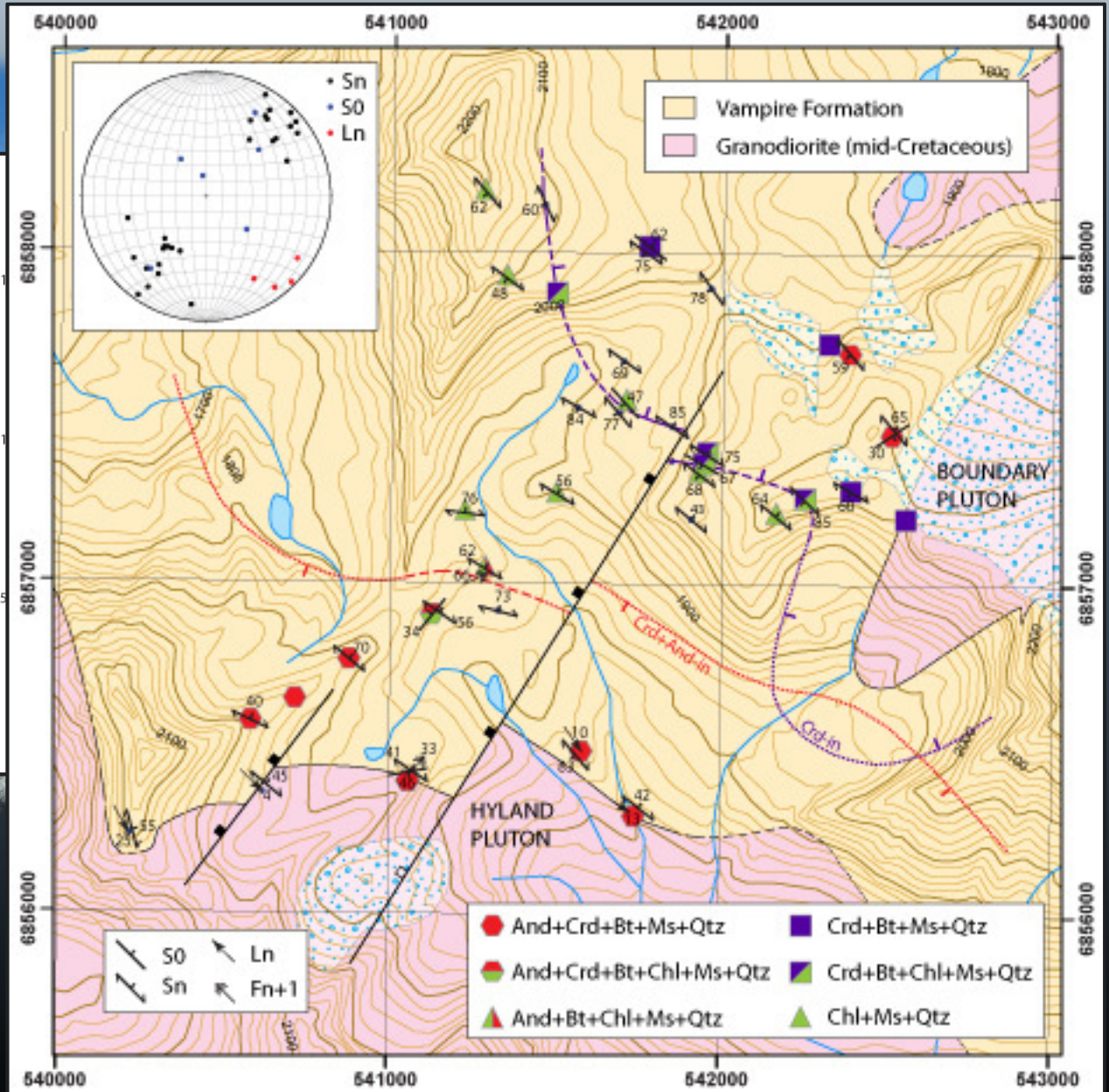
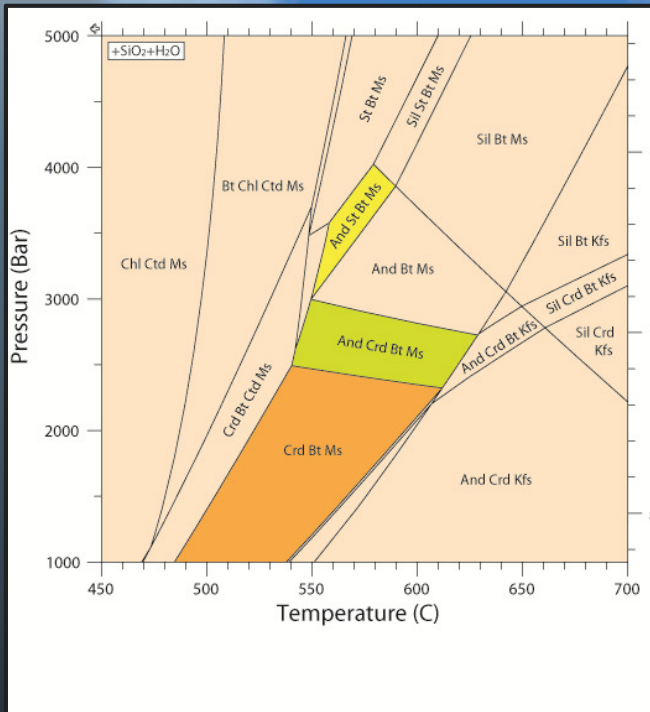
CELEBRATING 20 YEARS
1992-2012

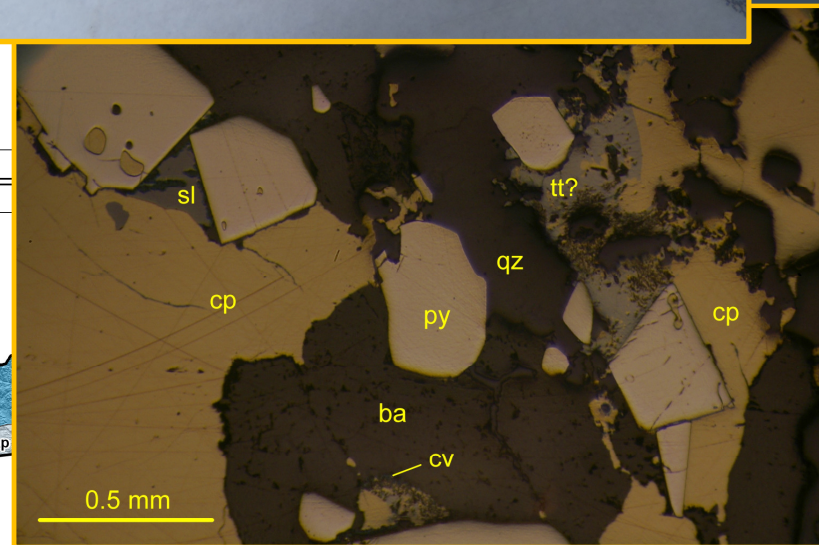
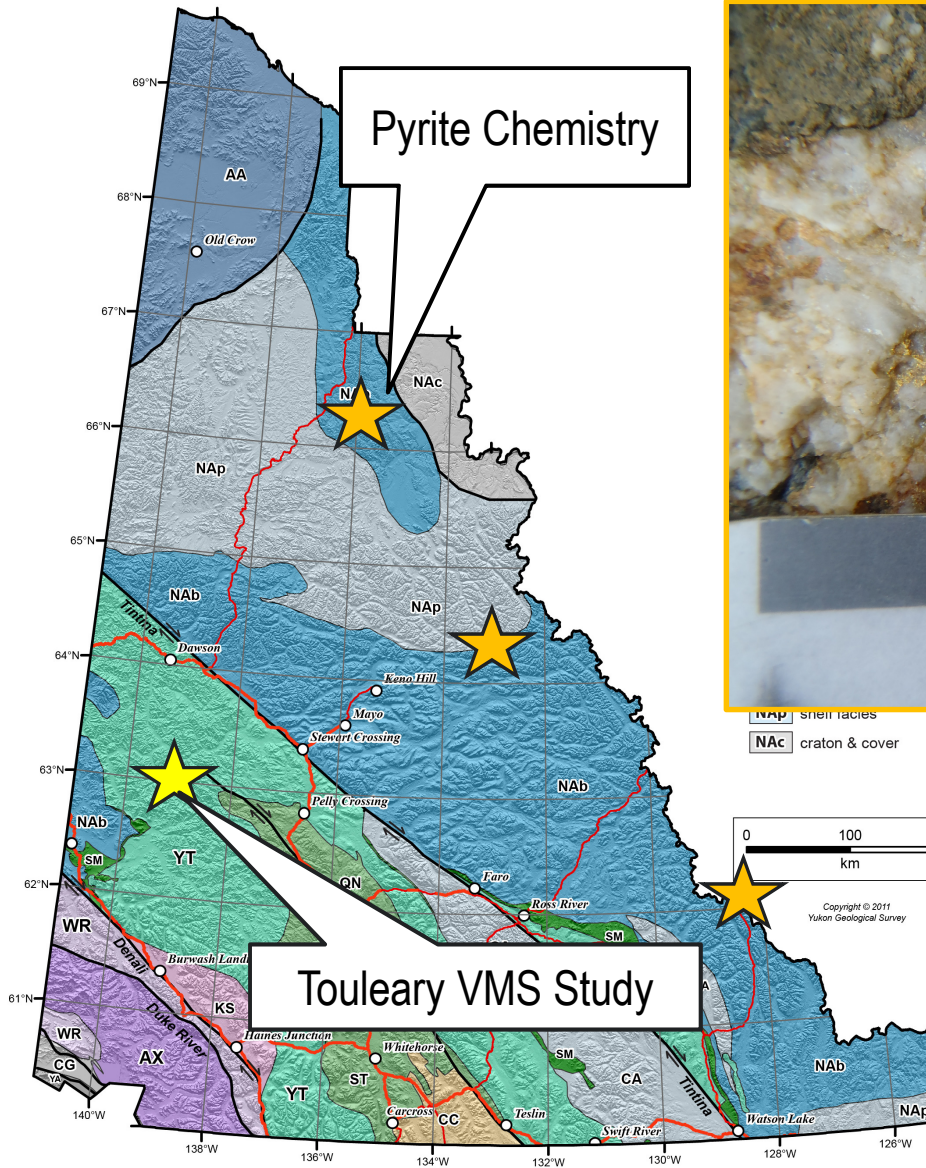


Liard Basin Study

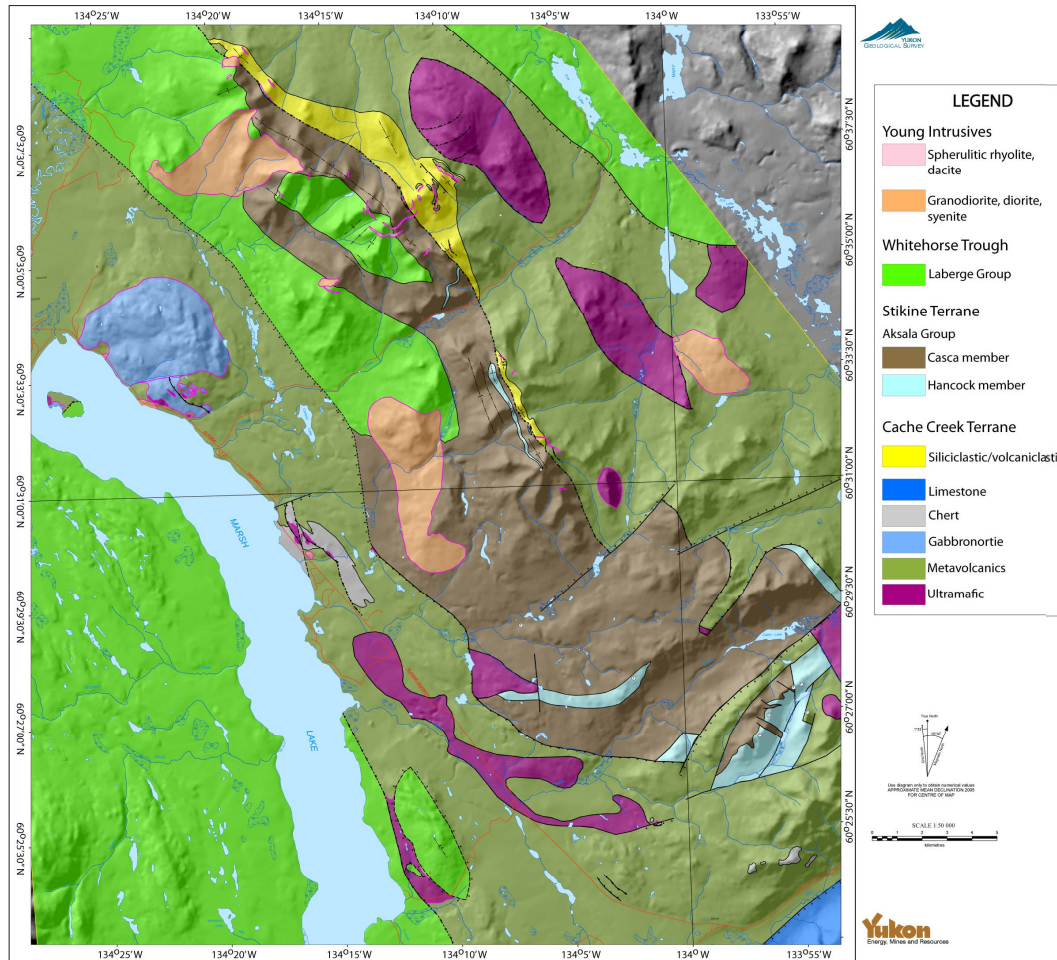


Highland River Project





Michie Creek/Tagish Map Project

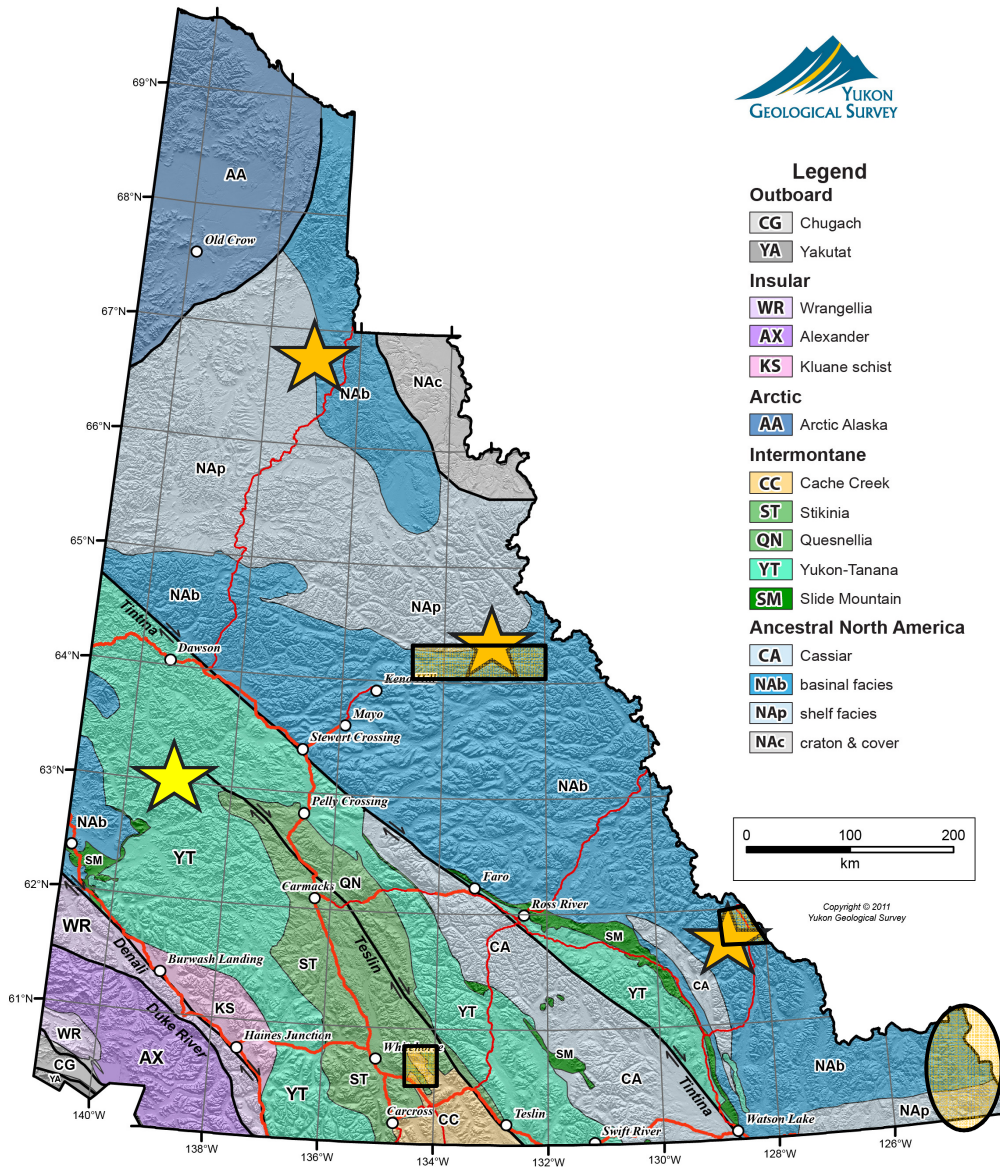


- Updated 1:50,000 mapping
- Petrology, geochemistry of intrusives & ultramafic bodies

Bedrock Projects

Upcoming publications:

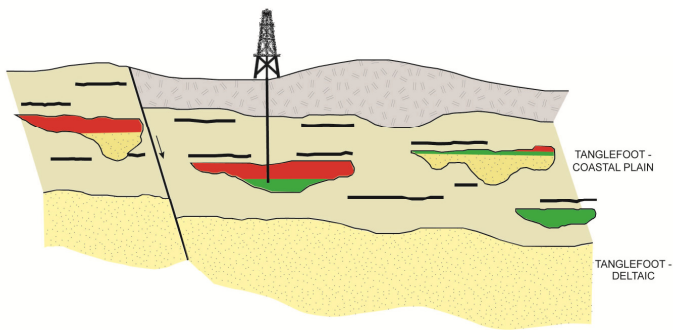
- Five 1:50K maps anticipated for release at Roundup
- YEG papers with preliminary results of Liard study, Vampire Fm reconnaissance, Touleary results, and pyrite chemistry, Michie Creek/Tagish geology



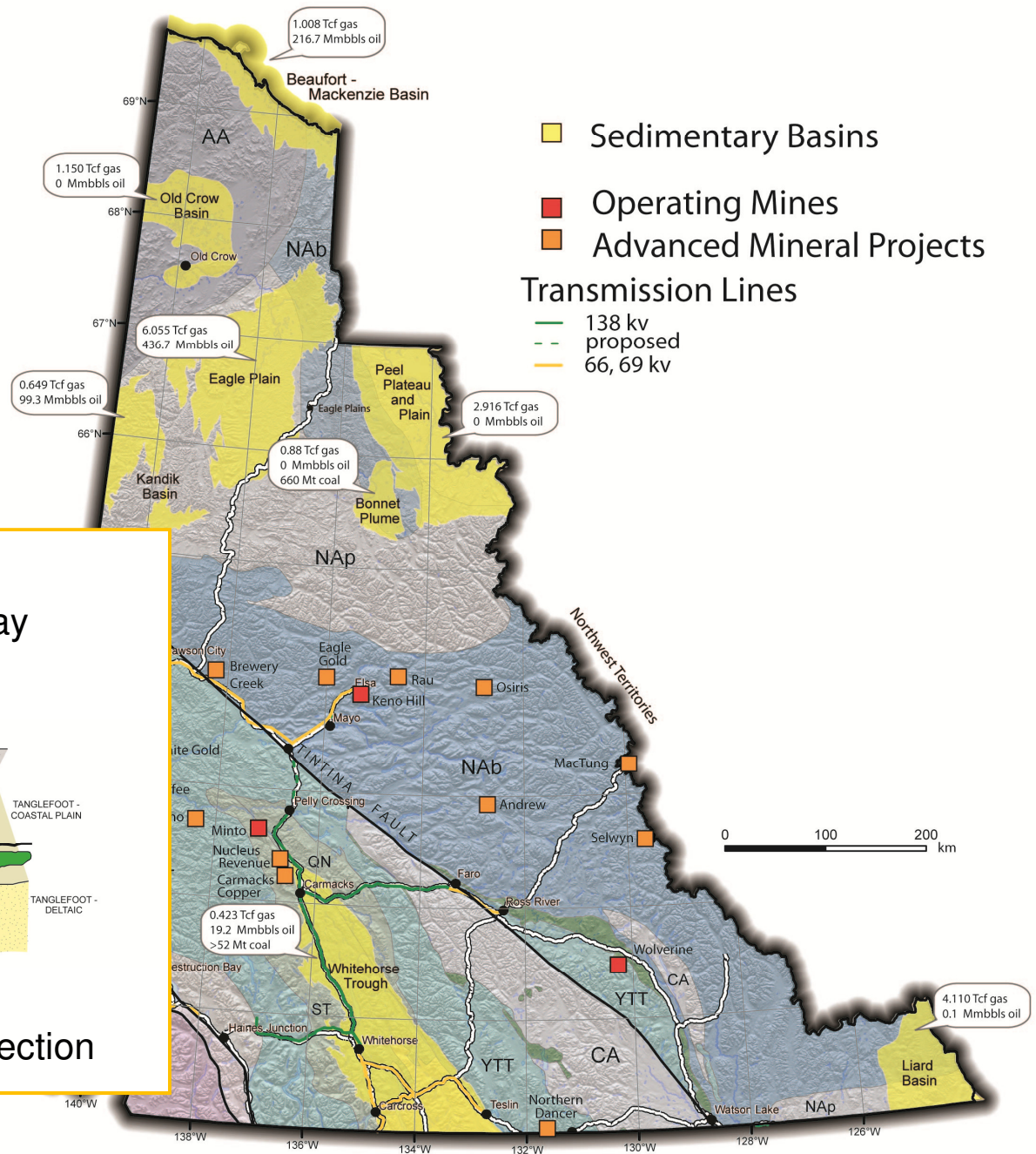
Petroleum Studies

- Scoping study of unconventional O&G potential of Yukon basins
- Updated resource assessment of WT

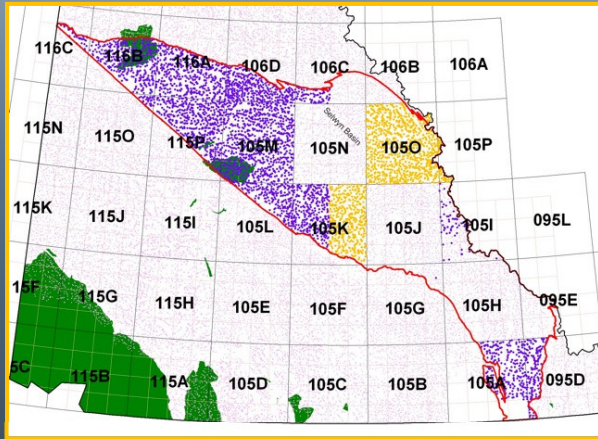
Conceptual Stratigraphic Play



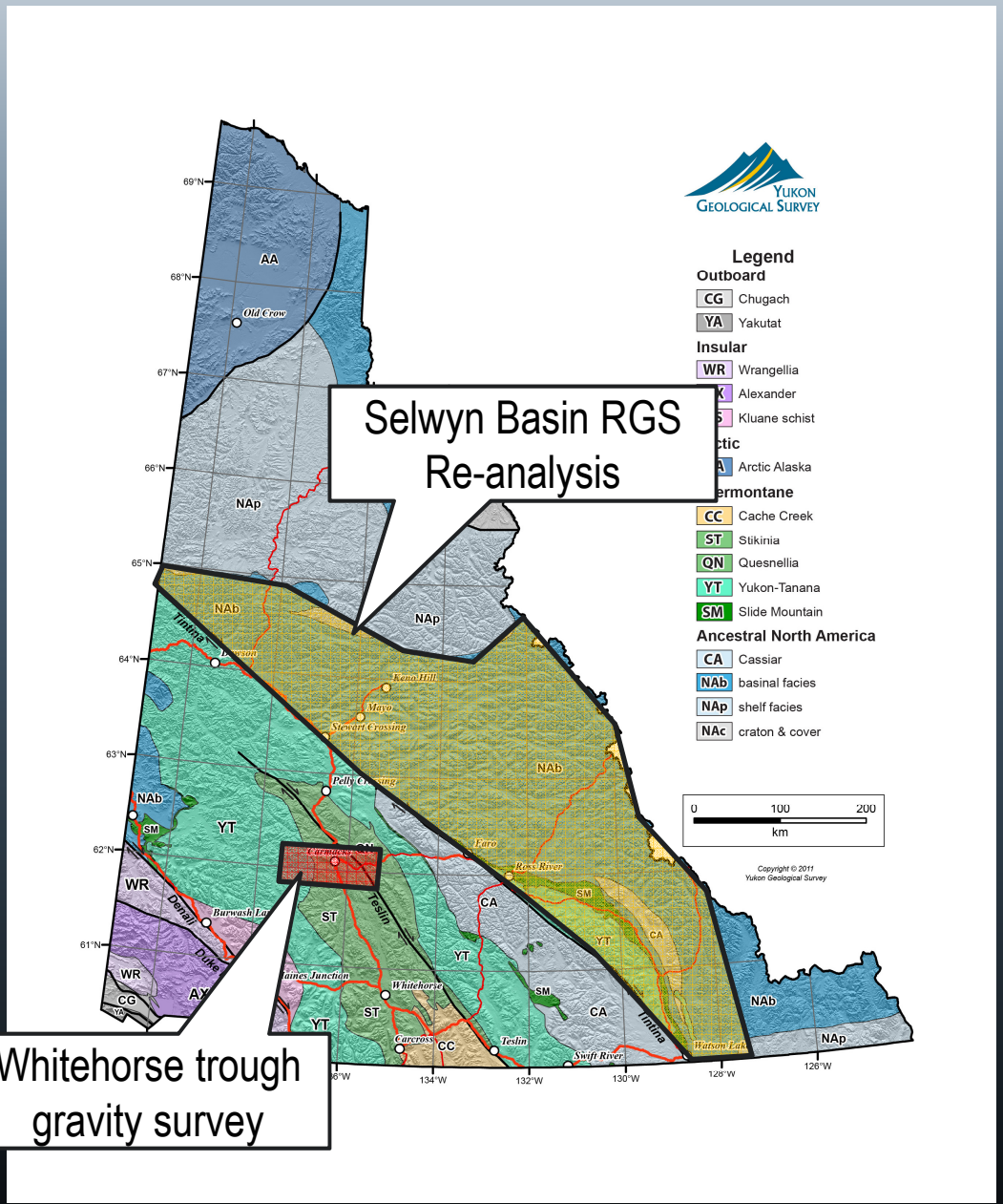
Tanglefoot Formation fluvial section



Geophysics & Geochemistry

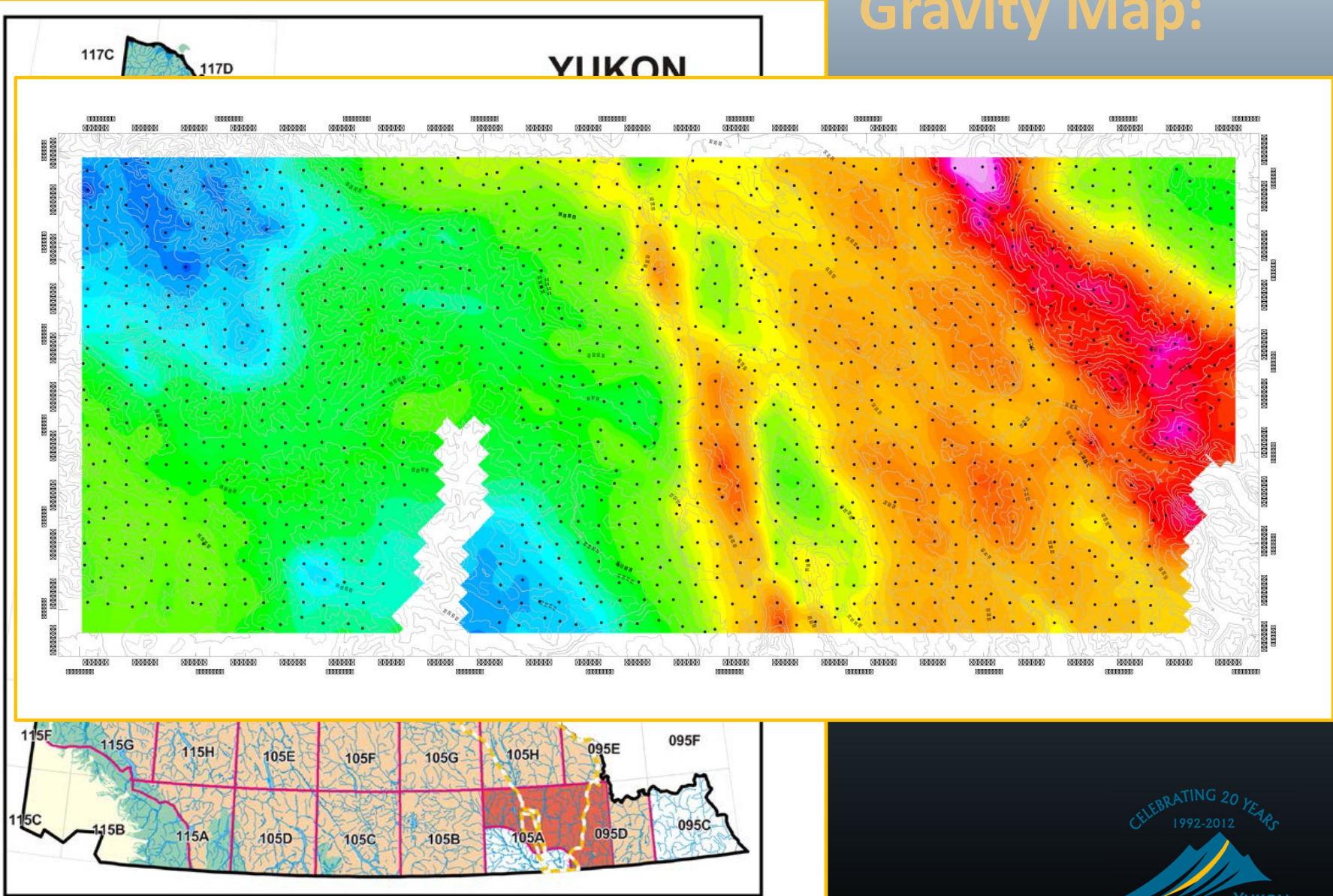


Whitehorse trough gravity survey



RGS Coverage:

Gravity Map:



Canadian Northern Economic
Development Agency

Agence canadienne de
développement économique du Nord



YMIP Highlights

29 Projects

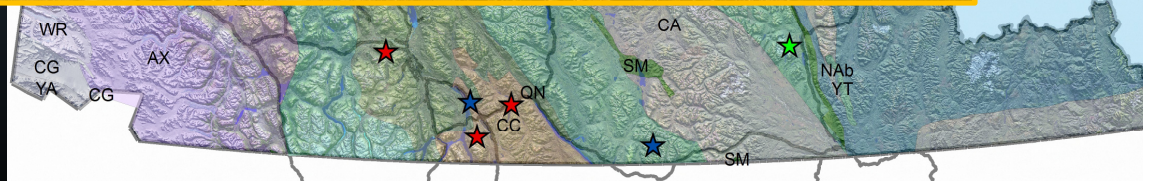
- Seven P
- Twenty

Program

3 Gra
8 Foc
18 Ta

Recipient

8 Priv
17 Ind
4 Pub



S

es 2011

gach
tat

angellia
ander
ne, Windy, Coast

c Alaska

he Creek
nia
snellia
on-Tanana
e Mountain

merica
suar

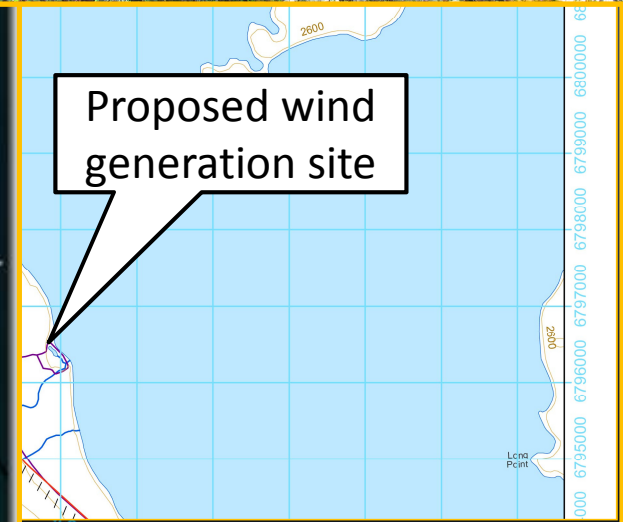
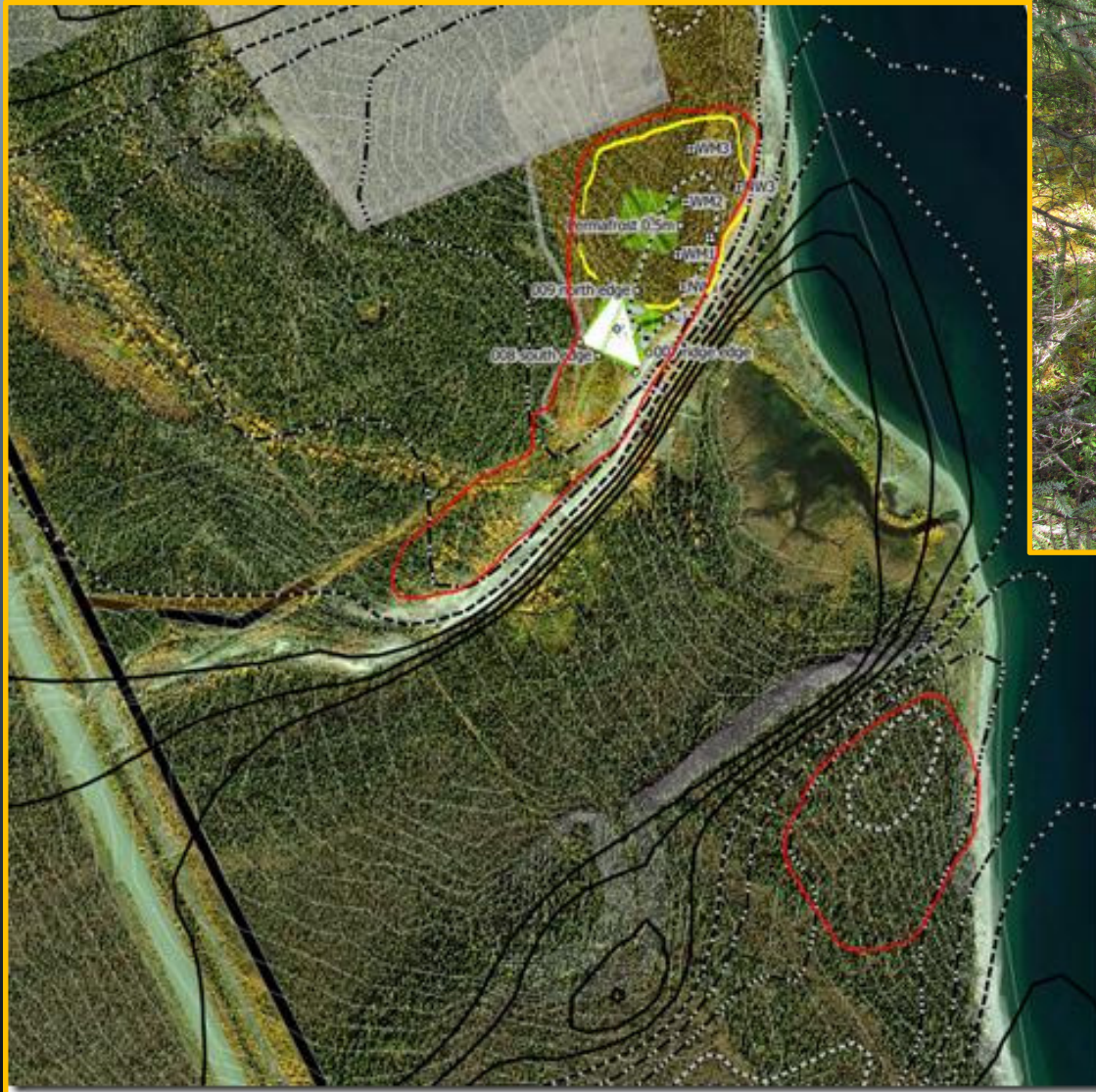
basinal
platform
craton & cover



Thematic Studies

- Community mapping
- Aggregate studies
- GPR surveys
- Permafrost monitoring
- Seismic Station
- Klondike gold
- Fluvial modelling
- Soil geochem

Thematic Studies



Canadian Northern Economic
Development Agency

Agence canadienne de
développement économique du Nord

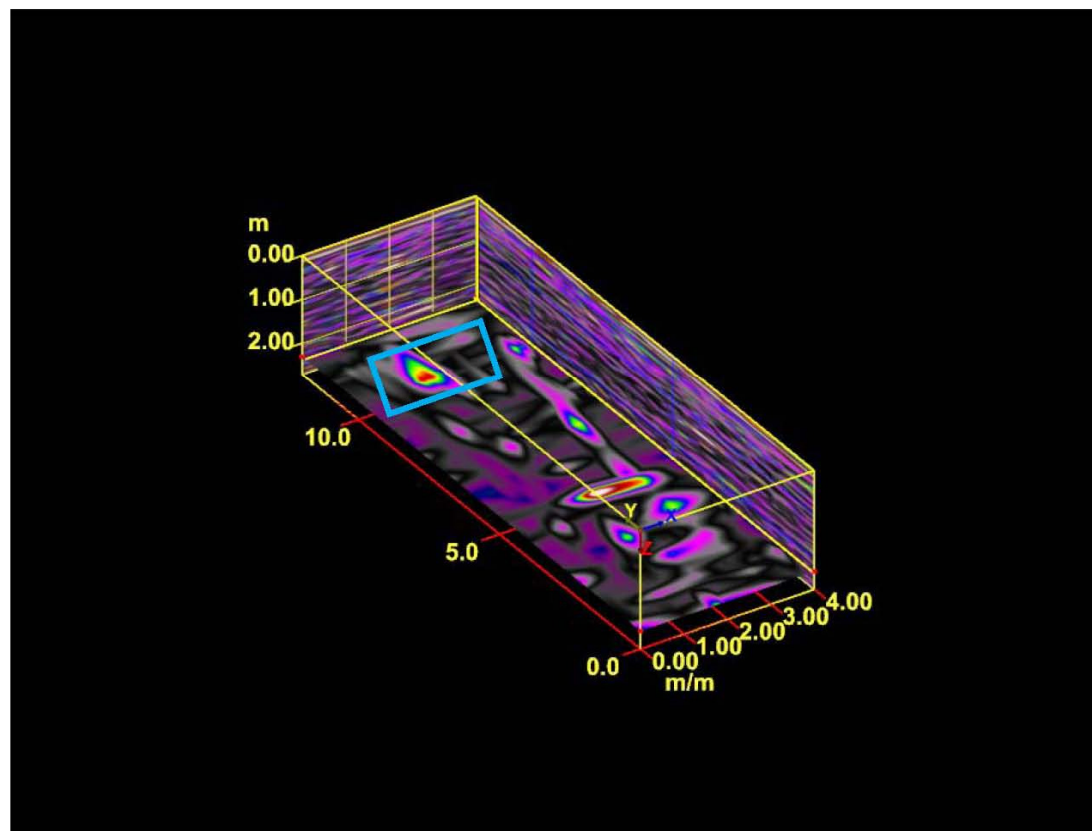


Thematic Studies

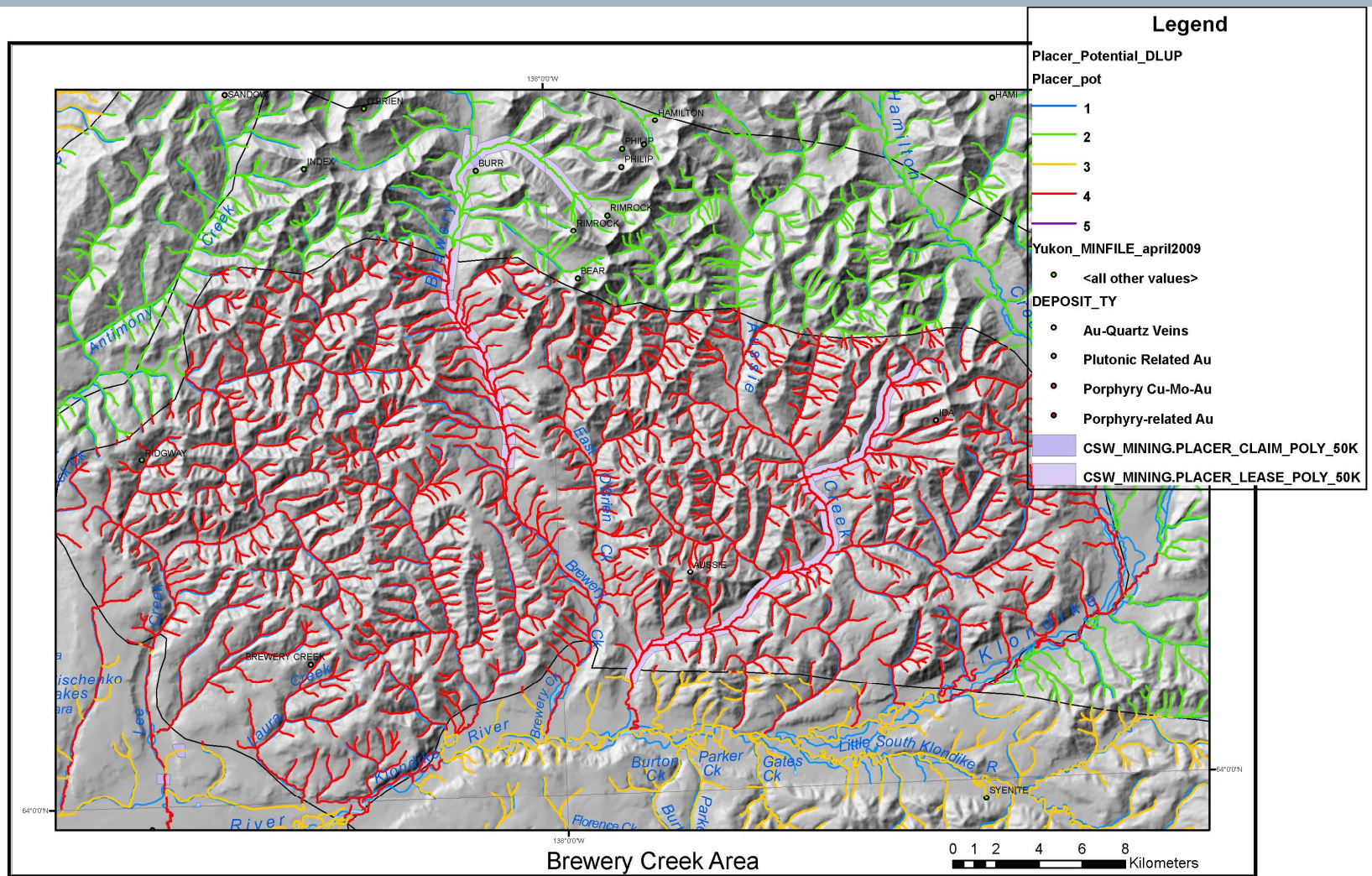
Grid number 1

Subject 5

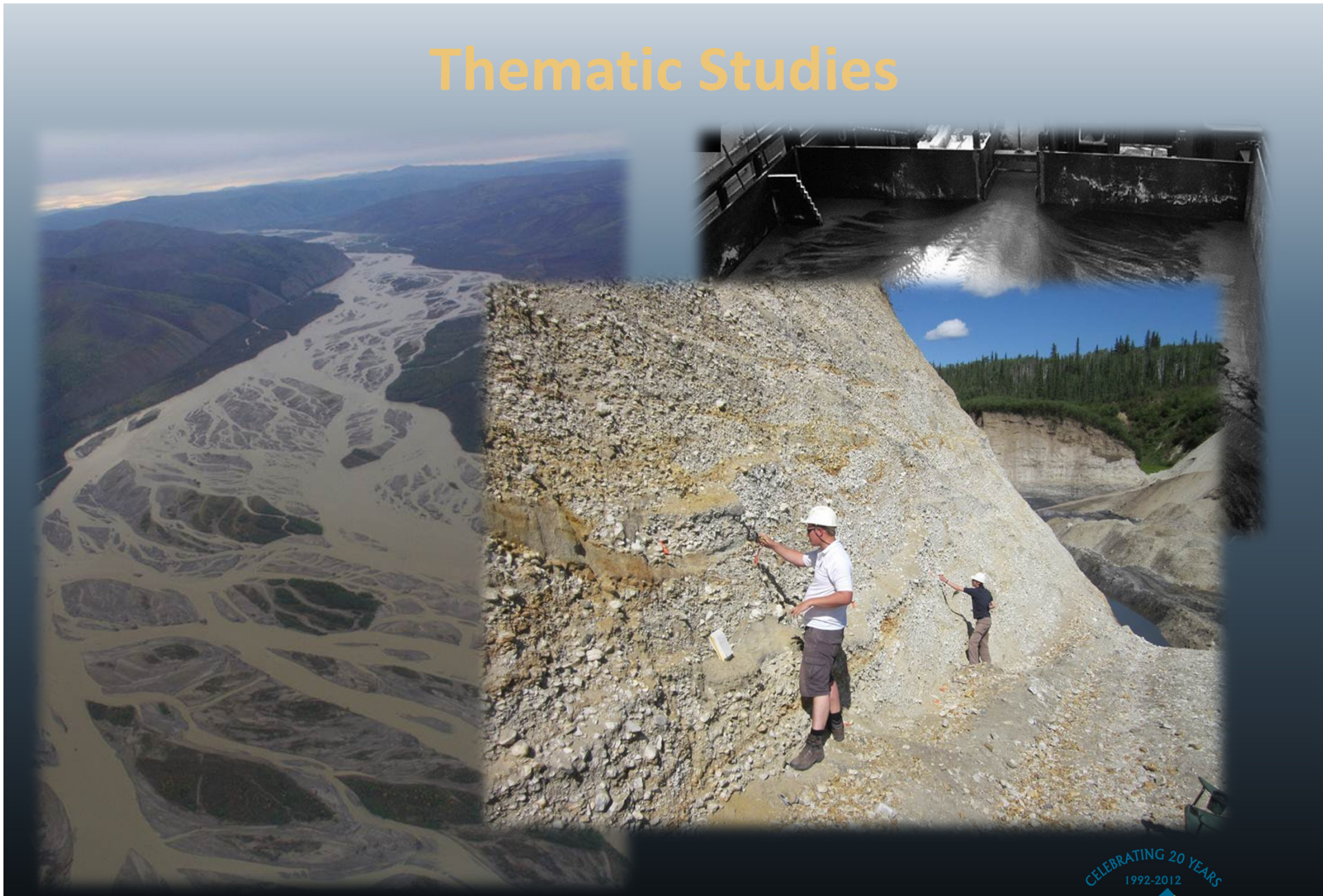
June 13, 2012



Thematic Studies



Thematic Studies



Canadian Northern Economic
Development Agency

Agence canadienne de
développement économique du Nord

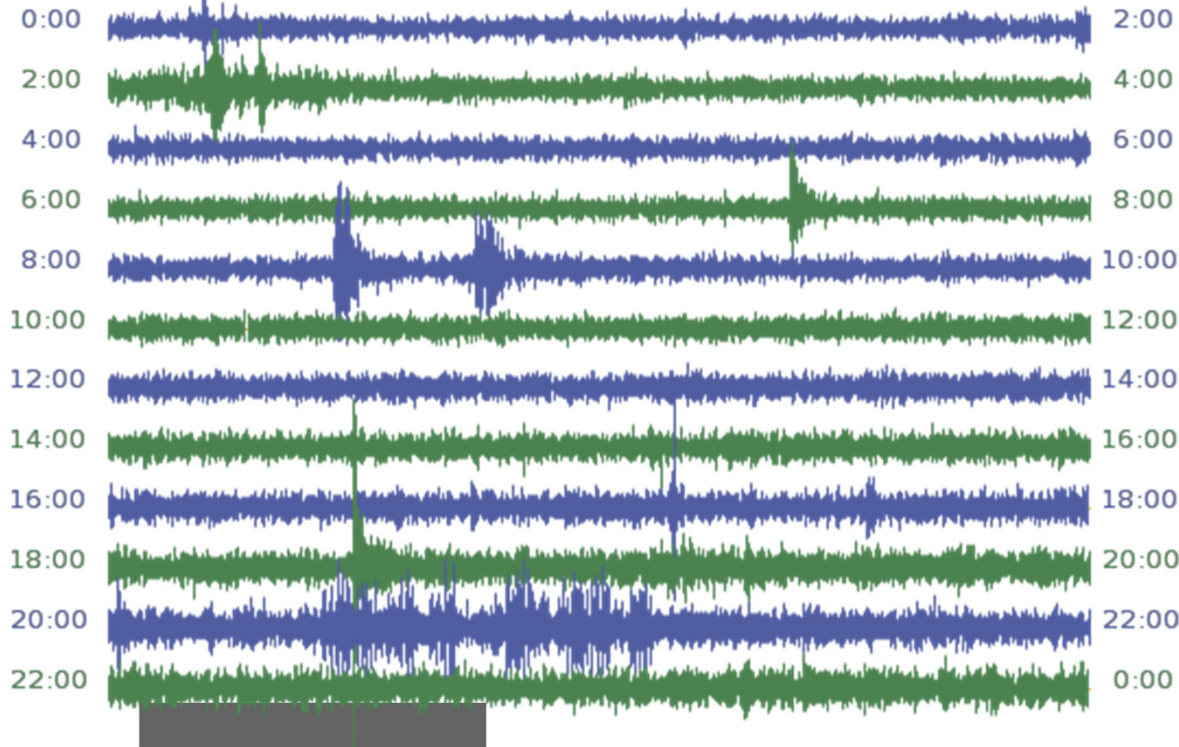


Thematic Studies



Seismic Monitoring, Eagle Plain

Saturday, 3 November 2012 ; Vertical Ground Motion



Today's Earthquakes

Near East Coast Of Kamchatka, 11/02 01:52 AM, M=5.5, Depth: 10 km

Recent Earthquakes

- Queen Charlotte Islands Region, 10/30 02:10 PM, M=4.6, Depth: 10 km
- Queen Charlotte Islands Region, 10/30 02:55 AM, M=5.0, Depth: 5.1 km
- Queen Charlotte Islands Region, 10/28 06:54 PM, M=6.3, Depth: 8.2 km
- Queen Charlotte Islands Region, 10/28 03:59 PM, M=4.6, Depth: 10 km
- Queen Charlotte Islands Region, 10/28 10:50 AM, M=4.3, Depth: 10 km
- Queen Charlotte Islands Region, 10/28 09:41 AM, M=4.4, Depth: 10 km

CELEBR

GEOI




Glacier Studies



Web Application Development

Home YGS Website Search Tips [My Downloads](#)



Welcome to the Yukon Geological Survey's Integrated Data System (YGSIDS). We are in the process of merging all of our data into one system (see the [current state of the conversion process](#)). When this process is complete, the YGSIDS will include all of the Yukon Geological Survey's publicly accessible data.

Enter your search criteria... **SEARCH**

What data is available to search in YGSIDS?

YGS PUBLICATIONS	OTHER PUBLICATIONS	MINFILE
Includes material formally published by the Yukon Geological Survey (Geoscience Maps, Open Files, Bulletins, etc.).	Publications managed, but not published by YGS or Energy, Mines and Resources including Mining Assessment Reports and Property Files (description). Other Yukon geology related information can be found here .	Minfile holds information about mineral occurrences in Yukon.

Browse YGS Publications

http://datate... Yukon Geological S...

File Edit View Favorites Tools Help

Convert Select



- Open File (General)
- Open File (Geochemical)
- Open File (Geological - Bedrock)
- Open File (Geological - Surficial)
 - 1983
 - 1993
 - 1994
 - 1995
 - 1999
 - 2000
 - 2001
 - [Lipovsky, P., Bond, J., and LeBarge, W., 2001. Mayo Area Placer Activity Map, Portions of NTS Sheets 105M, 106D, 115P and 116A, Yukon. Indian & Northern Affairs Canada/Department of Indian & Northern Development: Exploration & Geological Services Division, Open File 2001-35.](#)
 - [Lipovsky, P., LeBarge, W., Bond, J., and Lowey, G., 2001. Yukon Placer Activity Map. Indian & Northern Affairs Canada/Department of Indian & Northern Development: Exploration & Geological Services Division, Open File 2001-34.](#)
 - [Lipovsky, P., Lowey, G., and LeBarge, W., 2001. Dawson Area Placer Activity Map, Portions of NTS Sheets 116B&C and 115N&O, Yukon. Indian & Northern Affairs Canada/Department of Indian & Northern Development: Exploration & Geological Services Division, Open File 2001-36.](#)
 - 2002
 - 2004
 - 2005
 - 2006
 - 2008

http://datatest.geology.gov.yk.ca/Reference/42387

OCCURRENCE DETAILS

Occurrence Number	Occurrence Name	Occurrence Type	Status
1150 165	GOLDEN SADDLE	Hard-rock	Deposit

Economic Commodities: Au

Aliases: WHITE GOLD

Deposit Type(s): Plutonic Related Au

Location(s): 63°9'59" N - 139°28'58" W

NTS Mapsheet(s): 115003

Location Comments: .5 Kilometres

Last Reviewed: Jan 20, 2012

Work History

Last Updated: Sep 15, 2011

Date	Work Type	Comment
12/31/2009	Trenching	
12/31/2009	Geochemistry	Grid and ridge contour sampling throughout property.
12/31/2009	Drilling	Number of holes drilled: 94 Amount of work done: 25670 METRES 60 holes (19 023 m) collared on Golden Saddle.

YUKON GEOLOGICAL SURVEY

Celebrating 20 Years



2013 Calendar

Whistler 2013: Geoscience for Discovery

Society of Economic Geologists and SEG Canada Foundation

September 24-27, 2013 • Whistler, BC



SUBMIT YOUR ABSTRACT!

The Conference Committee invites you to submit an abstract for presentation at the conference. Abstracts will be accepted for oral presentations and poster displays.

Submit your abstract by April 1, 2013

www.seg2013.org/submit-an-abstract

