



NOTES
A legend accompanies this map.
See Appendix 1 for geochronological data and Appendix 4 for fossil data.
A database of Yukon MINFILE occurrences can be accessed online at www.geology.gov.yk.ca

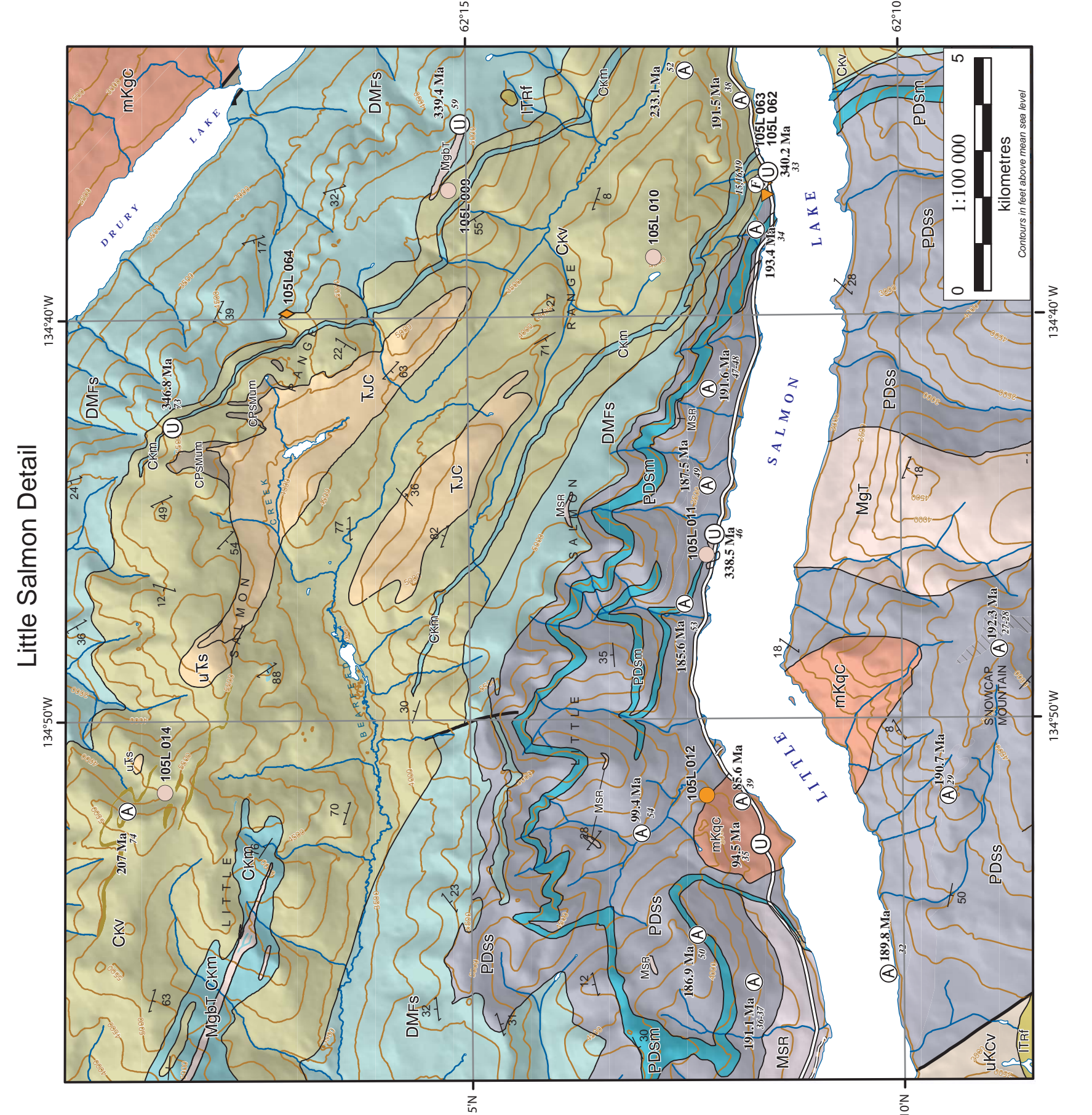
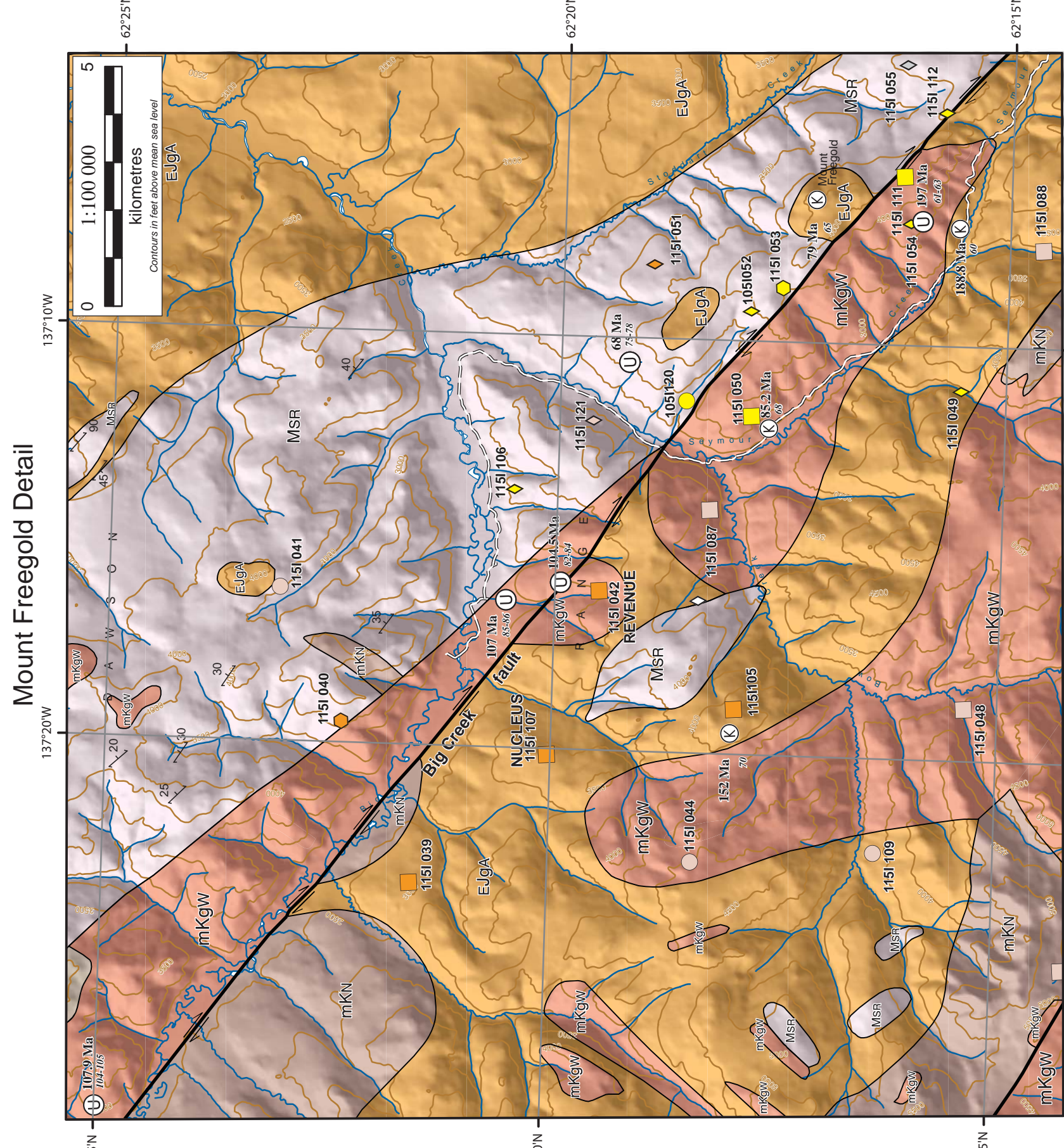
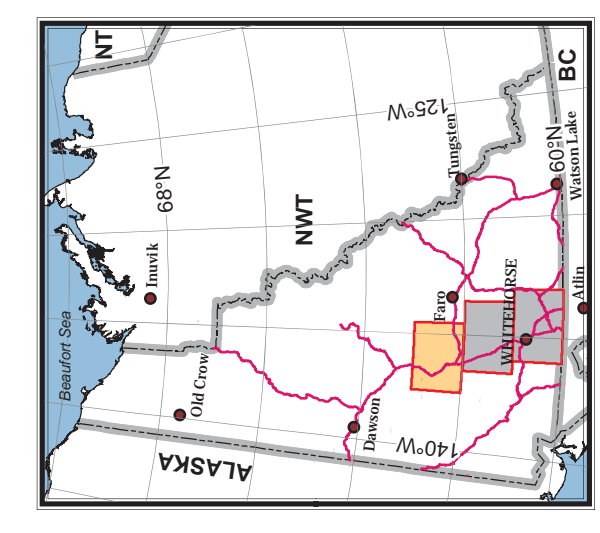
Topographic base data at 1:250,000 scale for main map and 1:500,000 scale for detail maps were produced by the Geological Survey of Canada, NATURAL RESOURCES CANADA.
Digital elevation model (DEM)
NATURAL RESOURCES CANADA
Copyright Her Majesty the Queen
Shaded Relief Area Cone Projection 100° W
Central Meridian 152° 30' W
North American Datum 1983

**BEDROCK GEOLOGY
PARTS OF CARMACKS
AND GLENLYON
YUKON**

SCALE 1:250 000

Use diagrams only for approximate values
APPROXIMATE MEAN DECLINATION 2009
FOR CENTRE OF MAP

105K	105L	105M	105N
TAY RIVER	GLENLYON	LABERGE LAKE	QUJET LAKE
105F	105E	105D	105C
ASHRIK LAKE	WHITEHORSE	TESELIN	
105B	105A		
DEZADEASH RANGE			
Sheet 1	Sheet 2	Sheet 3	



Yukon Geological Survey
Energy, Mines and Resources
Government of Yukon

**Geoscience Map 2011-1
Geological compilation
of Whitehorse trough**

Sheet 1
Parts of Carmacks (NTS 115L)
and Glenlyon (NTS 105L)
(1:250 000 scale)

compiled by
Maurice Colpron

©COURTESY OF THE GEOLOGICAL SURVEY OF CANADA
©2011 Yukon Geological Survey
This map is a compilation of geological data from various sources, including the Geological Survey of Canada, the Yukon Geological Survey, and other geological surveys. The data is presented in a digital format and is subject to change without notice. The map is intended for informational purposes only and should not be used for legal or financial decisions. The map is available in both print and digital formats. The print format is available for purchase from the Geological Survey of Canada. The digital format is available for download from the Geological Survey of Canada website. The map is licensed under the Creative Commons Attribution-NonCommercial-ShareAlike license. For more information, please visit the Geological Survey of Canada website.