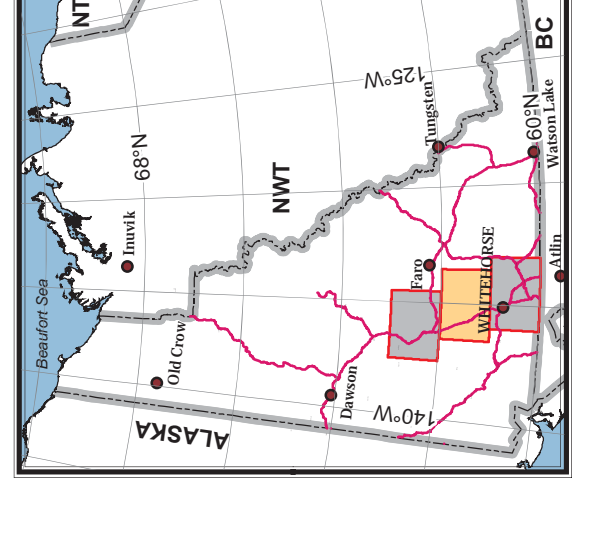




NOTES
A legend accompanies this map.
See Appendix 2 for geochronological data and Appendix 5 for fossil data.
A database of Yukon MINFILE occurrences can be accessed online at www.geology.gov.yk.ca

Topographic base data at 1:250 000 scale for main map and 1:50 000 scale for detailed maps were produced by Geological Survey of Canada, NATURAL RESOURCES CANADA
Digital elevation model (30 m) from SOURCESS CANADA
Copyright Her Majesty the Queen in Right of Canada
Albers Equal Area Conic Projection
Central Meridian 132°30' W
North American Datum 1983

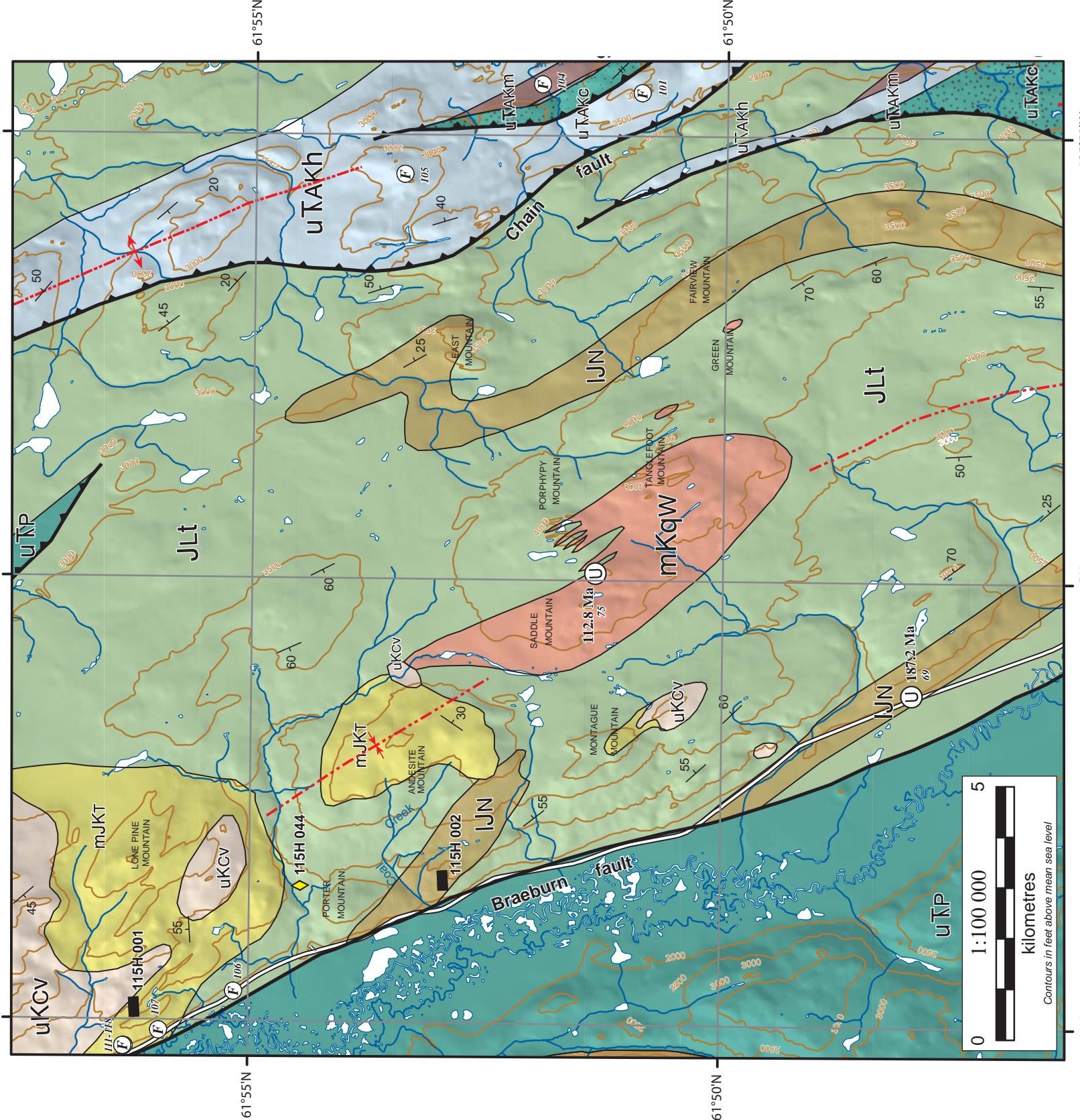


BEDROCK GEOLOGY
LAKE LABERGE AND PART OF
QUIET LAKE AND AISHIHIK LAKE
YUKON
SCALE 1:250 000
0 5 10 15 20 25
kilometres

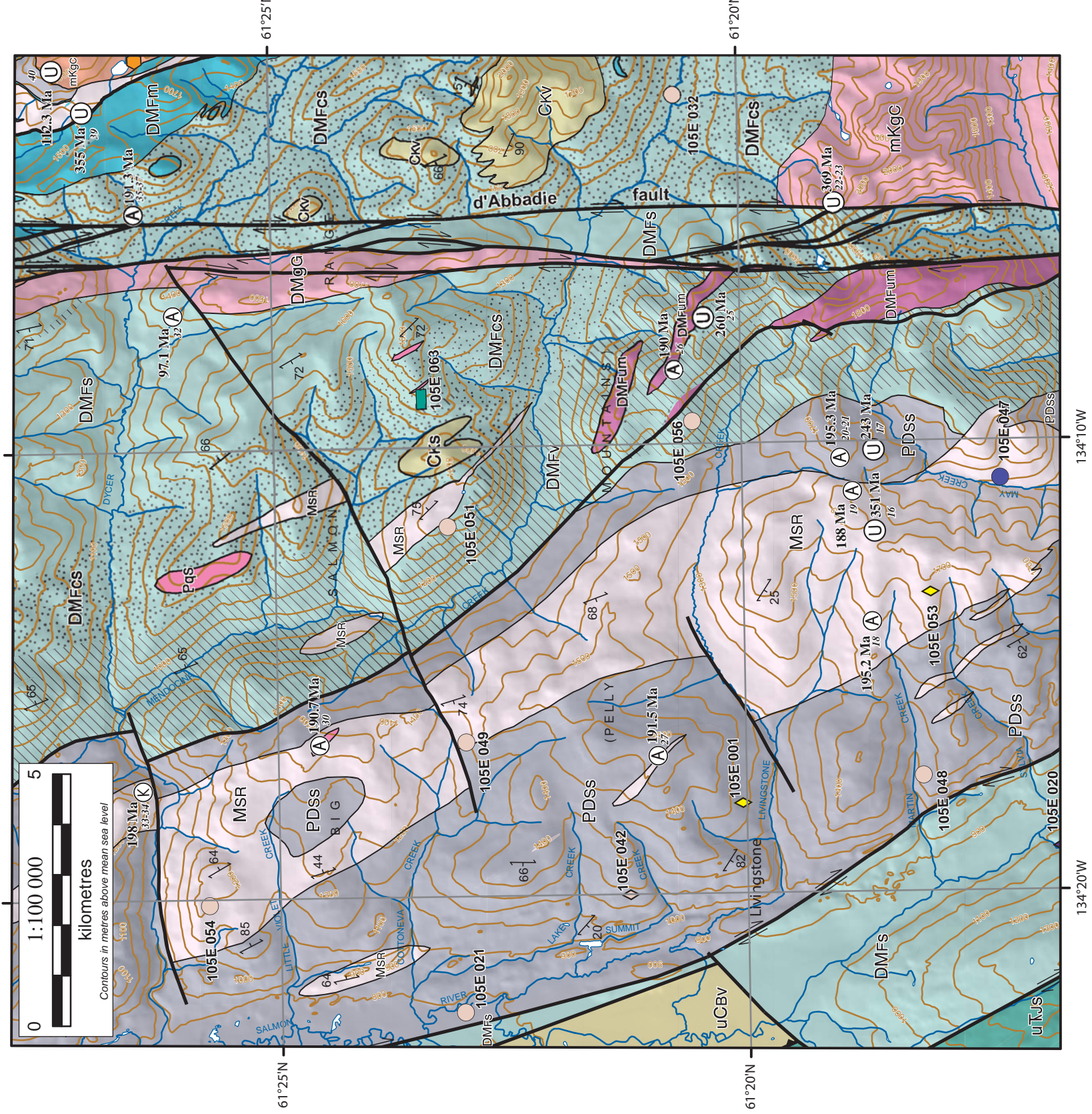
The North
23°04'
Magnetic North
Use diagram only to obtain magnetic values
APPROXIMATE MEAN DECLINATION 2009
FOR CENTRE OF MAP

132°W	134°W	136°W	138°W	140°W	142°W
60°N 115I	105L	105K	105J	105I	105H
CARMACKS	GLENLIVON	TAY RIVER			
Sheet 1					
62°N 115H	105E	105F	105G	105D	105C
AISHIHIK LAKE	LAKE LABERGE	QUIET LAKE			
Sheet 2					
64°N 115A	105D	105C	105B	105A	1050
DEZADEASH RANGE	WHITEHORSE	TESLIN			
Sheet 3					
66°N	136°W	134°W	132°W		

Montague Mountain Detail



Livingstone Detail



Yukon Geological Survey
Energy, Mines and Resources
Government of Yukon
Geological compilation
of Whitehorse trough
Sheet 2
Lake Laberge (NTS 105E) and part of
Quiet Lake (NTS 105F) and
Aishihik Lake (NTS 115H)
(1:250 000 scale)
compiled by
Maurice Colpron

REPRODUCED FROM Geological compilation of Whitehorse Trough - Whitehorse (105E), Lake Laberge (105F) and part of Aishihik Lake (115H) (NTS 1:250 000 scale). Maps developed by Yukon Geological Survey, 2011. For more information, contact the Yukon Geological Survey, 1100 St. James Street, Whitehorse, Yukon, Canada X1A 2S2.