

Legend

- Diamond drill hole
- Geophysical Anomaly**
 - G - Gravity anomaly
 - IP - I.P. anomaly
- ┆ Bedding
- ↘ Schistosity
- ↻ Fold overturned
- Topography**
 - ~ Creek
 - Drill road
 - ☪ Lake
 - ☪ Swamp

Geology

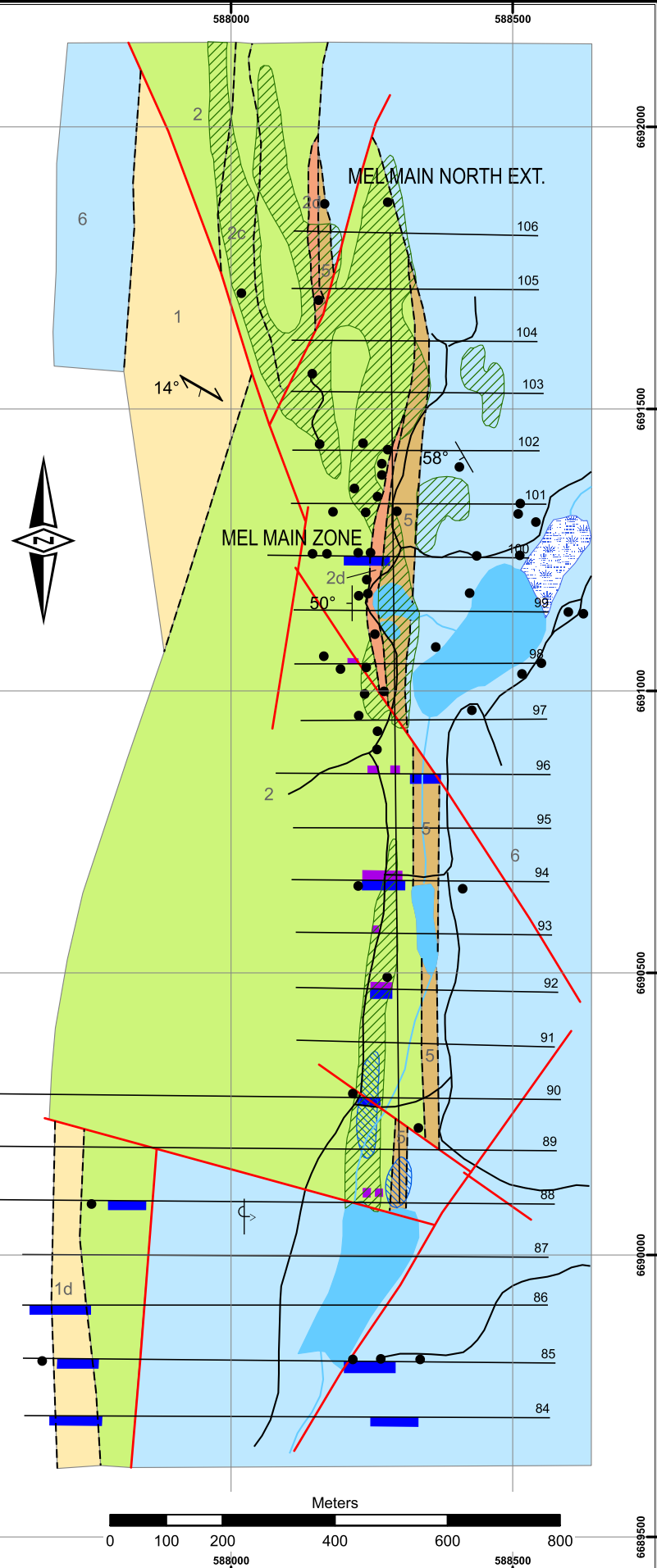
- - - Contact
- Fault

Soil Geochemistry

- ▨ Zn > 300 ppm
- ▨ Pb > 80 ppm

Geological Unit

- 1 - SILICEOUS SEDIMENTS AND LIMESTONE
- 1d - MUDSTONE
- 2 - CRYPTOGRAINED LIMESTONE
- 2c - SILICIFIED LIMESTONE +/- DOLOMITE
- 2d - LIMESTONE, INCLUDES 2c WITH ZINC +/- LEAD +/- BARITE
- 5 - CALCAREOUS PHYLLITE/MUDSTONE
- 6 - WAVY BANDED, SILTY LIMESTONE



SILVER RANGE RESOURCES LTD.

Title: **MEL MAIN ZONE COMPILATION:
GEOLOGY, GEOPHYSICS & GEOCHEMISTRY**
MEL PROPERTY

H. LEO KING & ASSOCIATES INC.

Scale:	Author: H.L. King	Figure: 6.1
Date: March 2017	Drawing: Terracad Geoscience Services Ltd.	Datum: NAD 83/ Z 9

