

10556

# ATLAS EXPLORATIONS LIMITED ROSS RIVER (Y.T.) SHELDON AREA REGIONAL GEOLOGY

SCALE 1" = 1/2 MILE  
GEOLOGY BY:

M. SAKURAI, C.L. SMITH, R. DARNEY, W. ROBERTS  
T. ADAMSON AND R. DUNSMORE  
DATE: AUGUST 1967

### LEGEND:

- CRETACEOUS(?)**
  - 5b GRANODIORITE
  - 5a BIOTITE QUARTZ MONZONITE PORPHYRY
  - 5 GRANITIC INTRUSIVES

---

- UPPER DEVONIAN**
  - 4h BLACK CHERT, MINOR CHERT PEBBLE CONGLOMERATE
  - 4g CHERT PEBBLE CONGLOMERATE
  - 4f BLACK CHERT, BLACK PHYLLITE, GREY CHERT
  - 4c BLACK PHYLLITE - BLACK CHERT
  - 4d BLACK CHERT, CHERT-DOLOMITE
  - 4c DOLOMITE
  - 4b BLACK CHERT, MINOR CHERT-DOLOMITE AND ARGILLITE
  - 4a BANDED CHERT

---

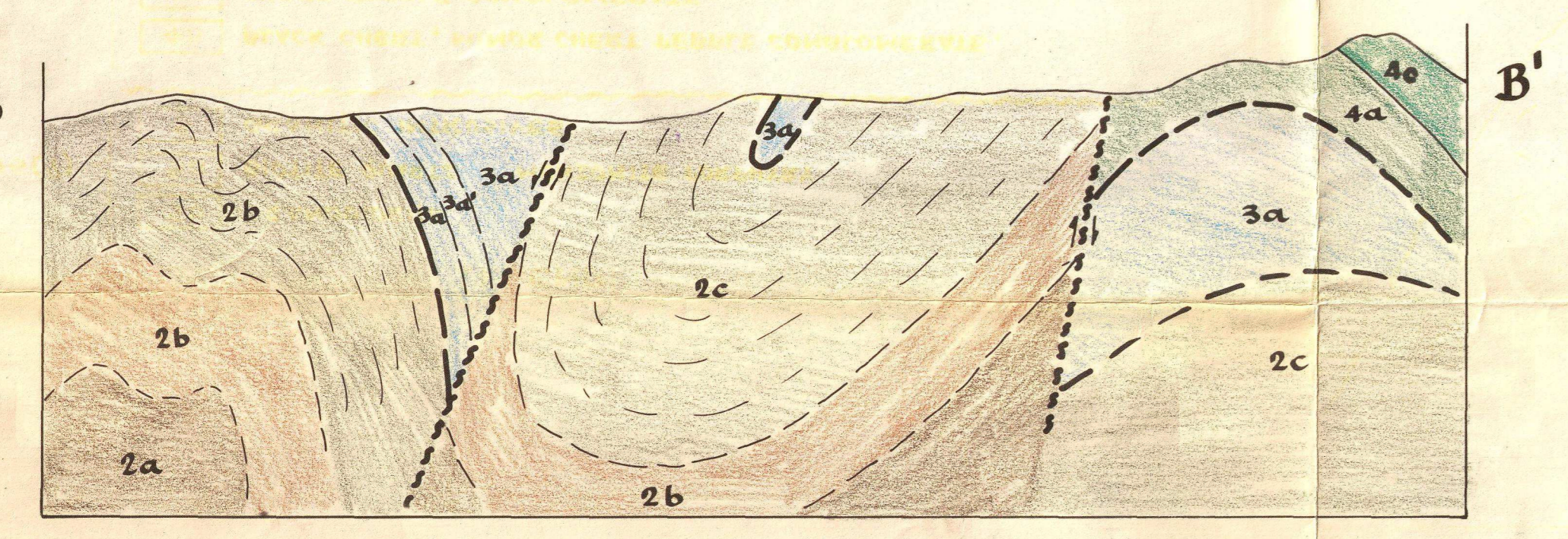
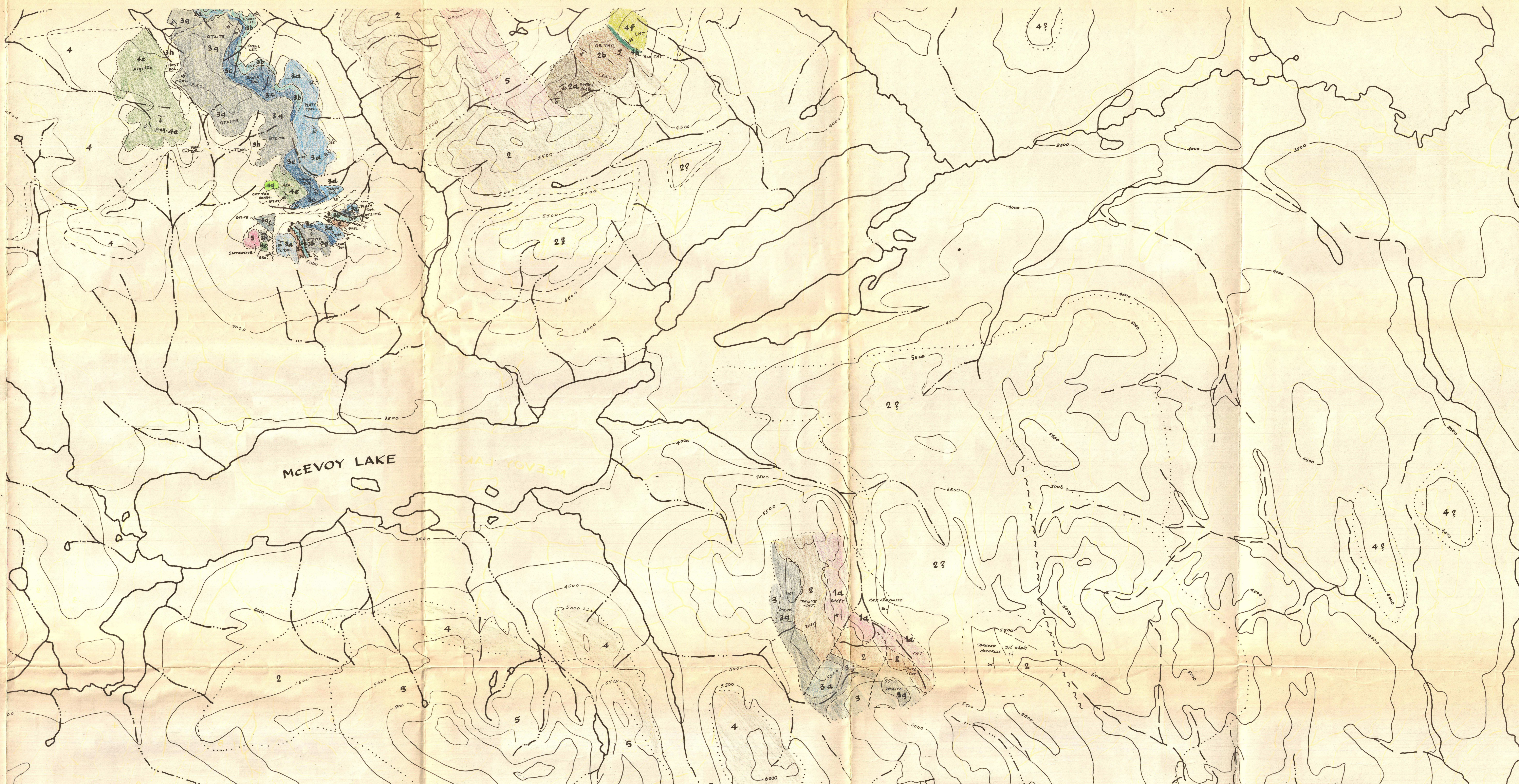
- SILURIAN DEVONIAN**
  - 3k QUARTZ SANDSTONE
  - 3j BEDDED LIMESTONE
  - 3i MASSIVE LIMESTONE
  - 3h QUARTZ SANDSTONE
  - 3g QUARTZ SANDSTONE (ORTHOQUARTZITE)
  - 3f LIMESTONE
  - 3e DOLOMITE
  - 3d QUARTZ SANDSTONE
  - 3c MASSIVE DOLOMITE
  - 3b LIMESTONE (WITH CHERT, MINOR LAMINAR LIMESTONE AND LIMESTONE)
  - 3a PLATY DOLOMITE, GRAPHITIC DOLOMITE, HOST DOLOMITE (3d)

---

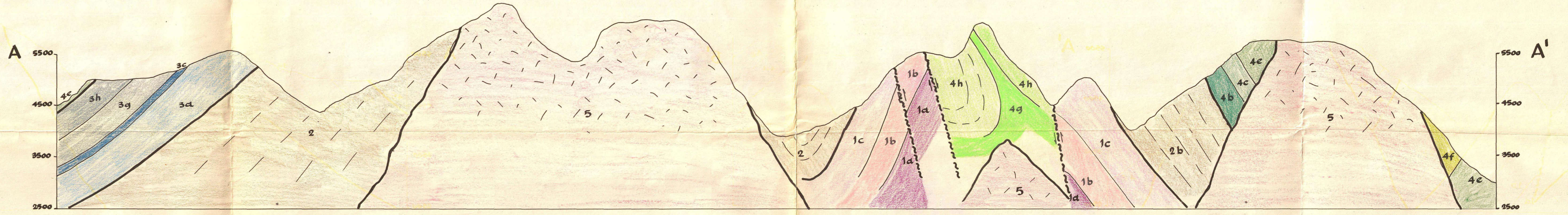
- M-U CAMBRIAN**
  - 2c SERICITIC PHYLLITE
  - 2b GRAY PHYLLITE
  - 2a SPOTTED PHYLLITE

---

- PROTEROZOIC(?)**
  - 1d QUARTZITE
  - 1c QUARTZ SANDSTONE
  - 1b PHYLLITE, LIMESTONE, MINOR WHITE CHERT
  - 1a QUARTZITE, WHITE CHERT, MINOR PHYLLITE AND LIMESTONE



NOTE: HORIZONTAL SCALE 1"=1000'



Brock 000021