

G.S.C.  
CLASSIFICATION

SECTION  
NUMBER

DESCRIPTION

ODc {  
Es {

- FAULT ~~~~~
- 5
  - 4
  - 3
  - 2
  - 1

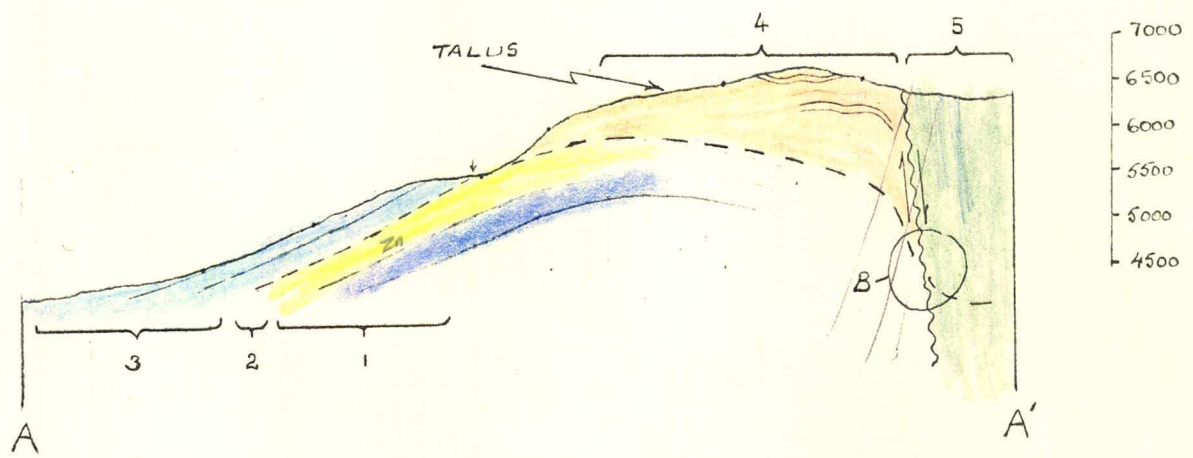
UNDETERMINED SEQUENCE OF CHERTS OR ARGILLITIC MUDSTONES AND LIMESTONES. BLUE GREY WEATHERING COLOUR.

MEDIUM BROWN AND BUFF COLOURED DOLOMITIC LIMESTONES, SANDSTONE AND LIMESTONES, OFTEN THINLY PARTED AND SHATTERING EASILY

DARK GREY-BUFF WEATHERING MUDDY LIMESTONE WITH OCCASIONAL GOSSAN ZONES IN BASE OF UNIT.

MEDIUM GREY DOLOMITIC LST. BUFF WEATHERING SURFACE GOSSAN DOLOMITIC LIMESTONE BASAL UNIT. SPHALERITE OCCURS IN DISSEMINATIONS AND FRACTURE FILLINGS.

LIGHT GREY WEATHERING DOLOMITIC LIMESTONE. OCCASIONALLY PYRITIC AND HARD



WELCOME NORTH MINES LTD  
AB GROUP  
SECTION A-A'  
JULY 1974 E.M.

FIG. (4)