

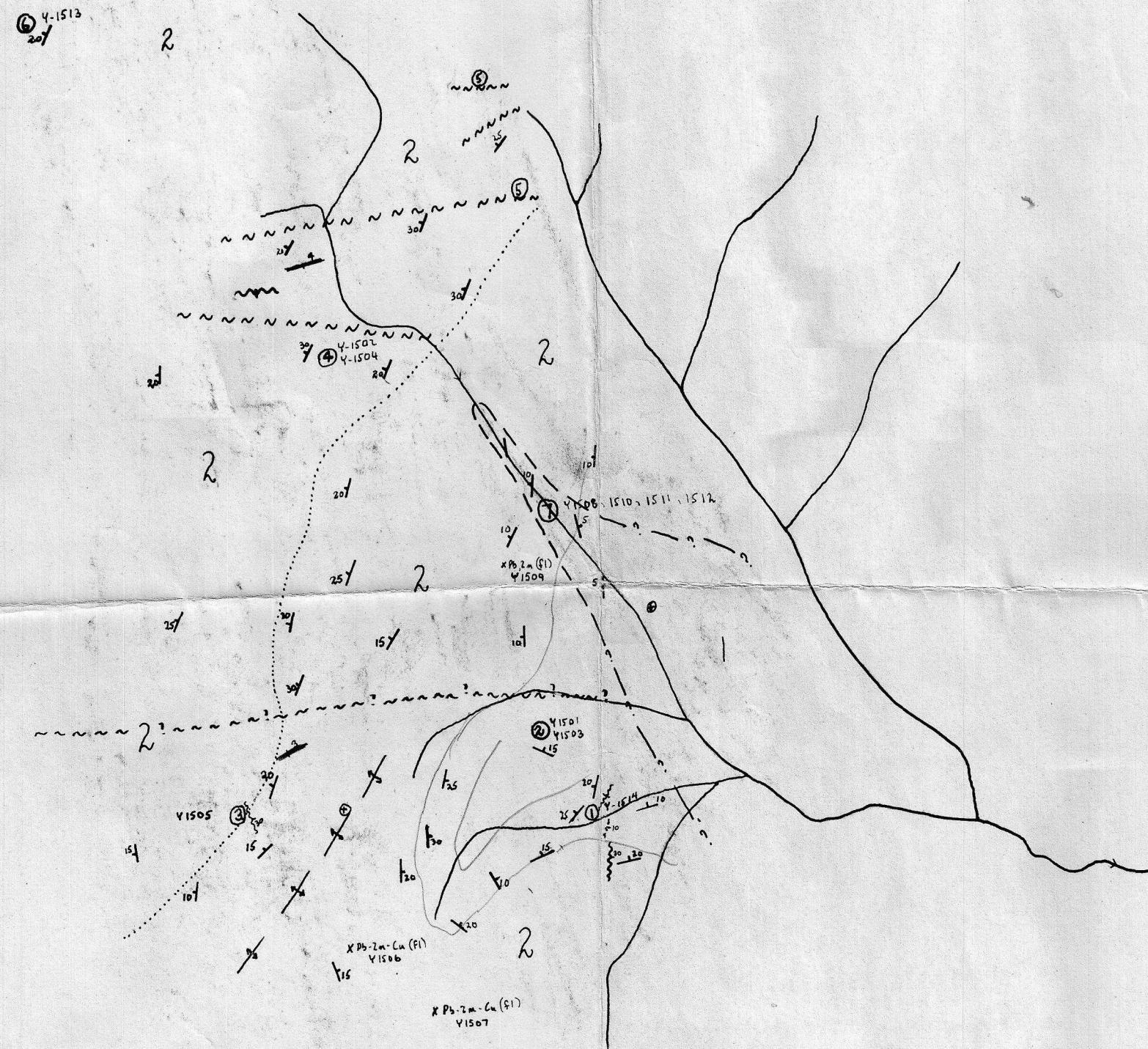
ATLAS EXPLORATIONS LIMITED  
ROSS RIVER (YT)

EAST JAKE GROUP GEOLOGY

(PHOTO OVERLAY OF A 12185-389)

GEOLOGY: T. ADAMSON  
SCALE: 1" = 1000'  
DATE: AUGUST 1967

ASSAYS	RESULTS				
	AU	AG	CU	PB	ZN
# Y 1501	2.35	.048	2.26	4.75	
Y 1502	1.10	.017	2.5	1.92	
Y 1503	1.85	.004	5.88	2.25	
Y 1504	0.1	1.60	0.10	.395	
Y 1505	5.42	ND	8.73	2.00	
Y 1506	0.4	1.52	0.66	1.14	
Y 1507	4.65	0.01	9.12	4.20	
Y 1508	ND	0.10	.022	0.10	
Y 1509	ND	.078	0.10	0.15	
Y 1510	1.85	.018	1.2	32.5	
Y 1511	2.65	.008	2.1	3.20	
Y 1512	2.15	.026	0.82	20.0	
Y 1513	.72	.605	.14	.27	
Y 1514	1.72	.0135	6.65	17.0	
Y 1515	.23	.003	.09	.047	
Y 1516	.18	.0455	.48	.087	



SYMBOLS

---	CONTACT
-?-?	CONTACT (ASSUMED)
↑	ANTICLINE AXIS
— —	BEDDING
~~~~~	FAULT
~~~~~	FAULT (ASSUMED)
.....	RIDGE

LEGEND

CRETACEOUS	4	DACITE DYKES ; PORPHYRITIC
	3	VESICULAR BASALT DYKES
MIDDLE-UPPER CAMBRIAN (?)	2	BANDED HORNFELS ; ORIGINALLY A FINELY INTERBEDDED SHALE-CHERT SEQUENCE
	1	SHALE ; IN PLACES QUITE SILICEOUS

MAIN SHOWINGS

- 1 GALENA-SPHALERITE MINERALIZATION IN NARROW IRREGULAR SHEAR ZONE (IN SILICEOUS BLACK SHALE) MAXIMUM WIDTH=1'; SOME VERY NARROW MINERALIZED SUBSIDIARY SHEARS. ASSAY # Y1514 (GRAB)
- 2 NUMEROUS VERY SMALL SHEARS (WIDTH 1-2", LENGTH 3-4') IN BANDED CHERTS + SHALES (HORNFELSIC ALTERATION) MINERALIZED WITH GALENA, SPHALERITE, CHALCOPYRITE, QUARTZ, CALCITE. ASSAY # Y1501 (GRAB) Y1503 (GRAB)
- 3 GALENA-SPHALERITE-CHALCOPYRITE - A SMALL FLAT LYING SHEAR. (1-2" WIDE, 15' LONG) ASSAY # Y1505
- 4 DISSEMINATED CHALCOPYRITE-GALENA-SPHALERITE IN A CALCITE-GARNET-TREMOLITE SKARN LENS (WIDTH 1-2', LENGTH = 200') ASSAY # Y1502 - Y1504
- 5 SPOTTY LOW GRADE GALENA-SPHALERITE MINERALIZATION IN NARROW SHEAR ZONES.
- 6 DISSEMINATED CHALCOPYRITE IN HIGHLY FRACTURED BLACK CHERT. EXPOSED FOR A WIDTH OF 10' AND STRIKE LENGTH OF 30' ASSAY # Y1513 (CHIP ACROSS 10')
- 7 MINOR CHALCOPYRITE, GALENA SPHALERITE, IN NARROW, WIDELY SPACED QUARTZ VEINS. ASSAY # Y1508 (GRAB)-Y1510 (GRAB)-Y1511 (GRAB)-Y1512 (GRAB)

Brock000051