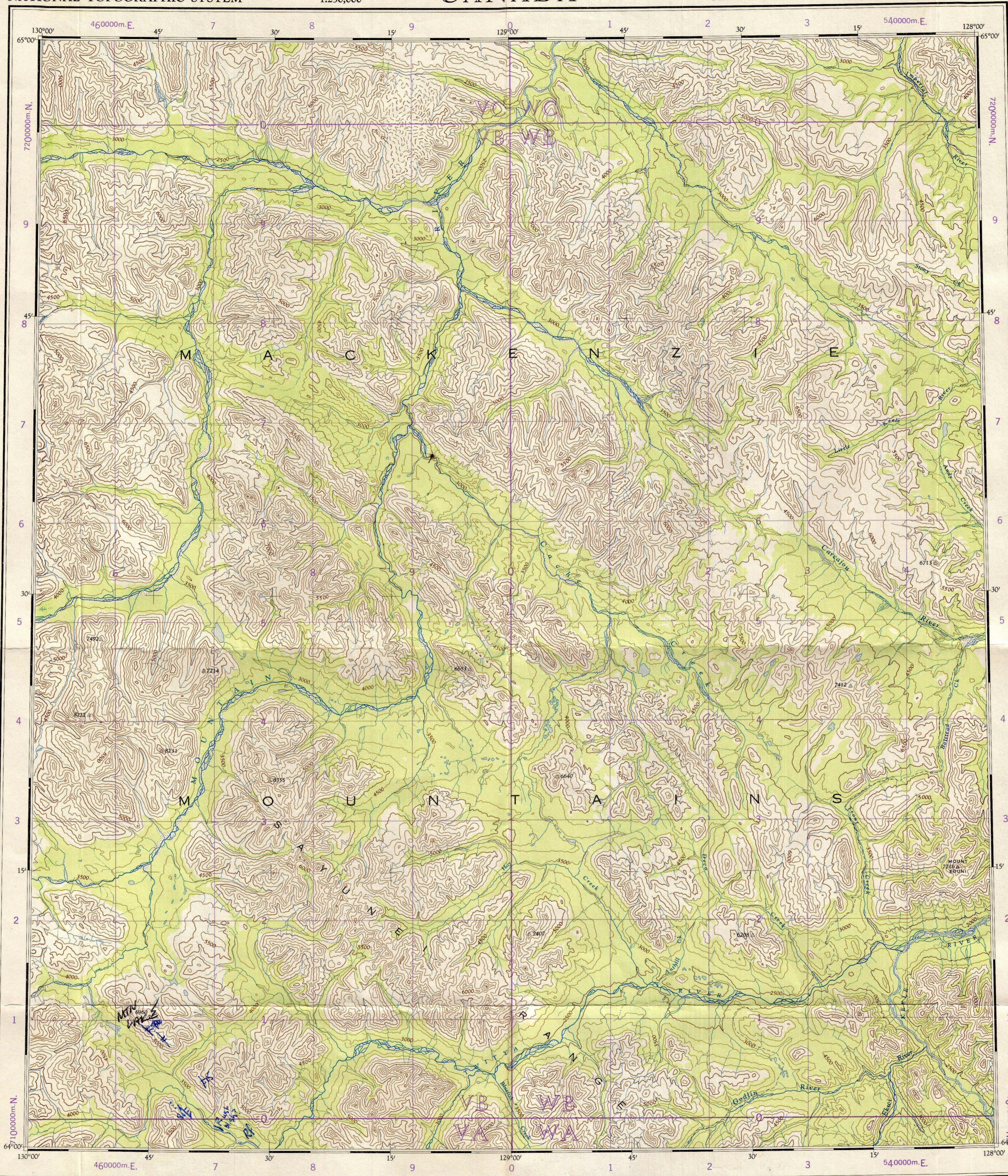


Refer to this map as: 106 A EDITION 1 ASE SERIES A 502



100,000 M. SQUARE IDENTIFICATION	
GRID ZONE DESIGNATION	YCWC 720
	VBWB 710
	YAWA 50

TO GIVE A REFERENCE TO NEAREST 1000 METRES

EXAMPLE: LAKE

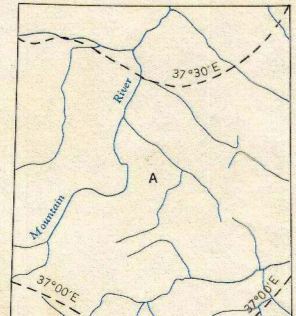
SQUARE: Read letters of 100,000 m. square	VB
EASTING: Read number on grid line immediately to left of point	8
Estimate tenths of a square from this line downward to point	88
NORTHING: Read number on grid line immediately below point	6
Estimate tenths of a square from this line northeast to point	66

MILITARY GRID REFERENCE (to nearest 1,000 metres) VB8866

If reporting beyond 18° in any direction, prefix Grid Zone Designation as YCWB8866

TEN THOUSAND METRE UNIVERSAL TRANSVERSE MERCATOR GRID ZONE 9

THE DECLINATION OF THE COMPASS NEEDLE 1959



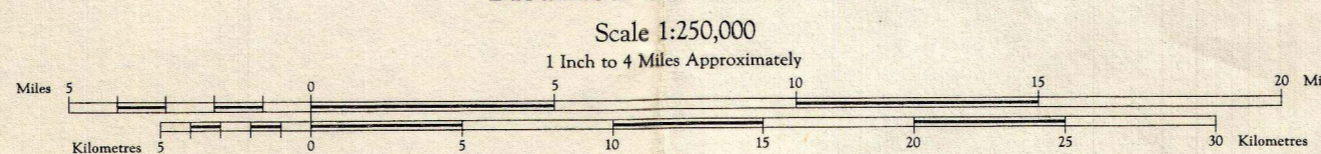
Produced and printed by the SURVEYS AND MAPPING BRANCH, DEPARTMENT OF MINES AND TECHNICAL SURVEYS, 1959, from air photographs taken between 1949 and 1955.

Transverse Mercator Projection

Contour Interval 500 Feet Elevations in Feet above Mean Sea Level North American Datum 1927.

MOUNT EDUNI NORTHWEST TERRITORIES DISTRICT OF MACKENZIE

Scale 1:250,000 1 Inch to 4 Miles Approximately

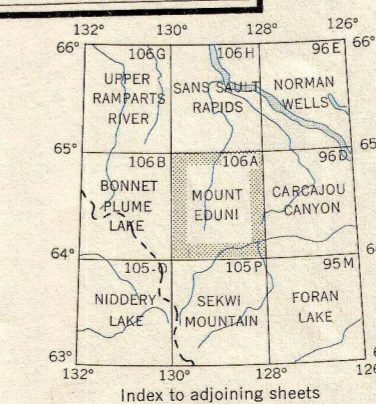


REFERENCE

- Wagon or winter road.....
- Trail or portage.....
- Village or settlement.....
- Post office.....
- Building or cabin.....
- Historical control point.....
- Astronomical position.....
- Spot elevation (in feet).....
- R.C.M.P. post.....

REFERENCE

- Streams: intermittent or dry.....
- in dry river bed.....
- Rapids, falls.....
- Marsh or swamp.....
- Contours: elevation.....
- depression.....
- approximate.....
- Sand, gravel or mud.....
- Forest.....



MOUNT EDUNI 106 A EDITION 1

Brock000075

106-A