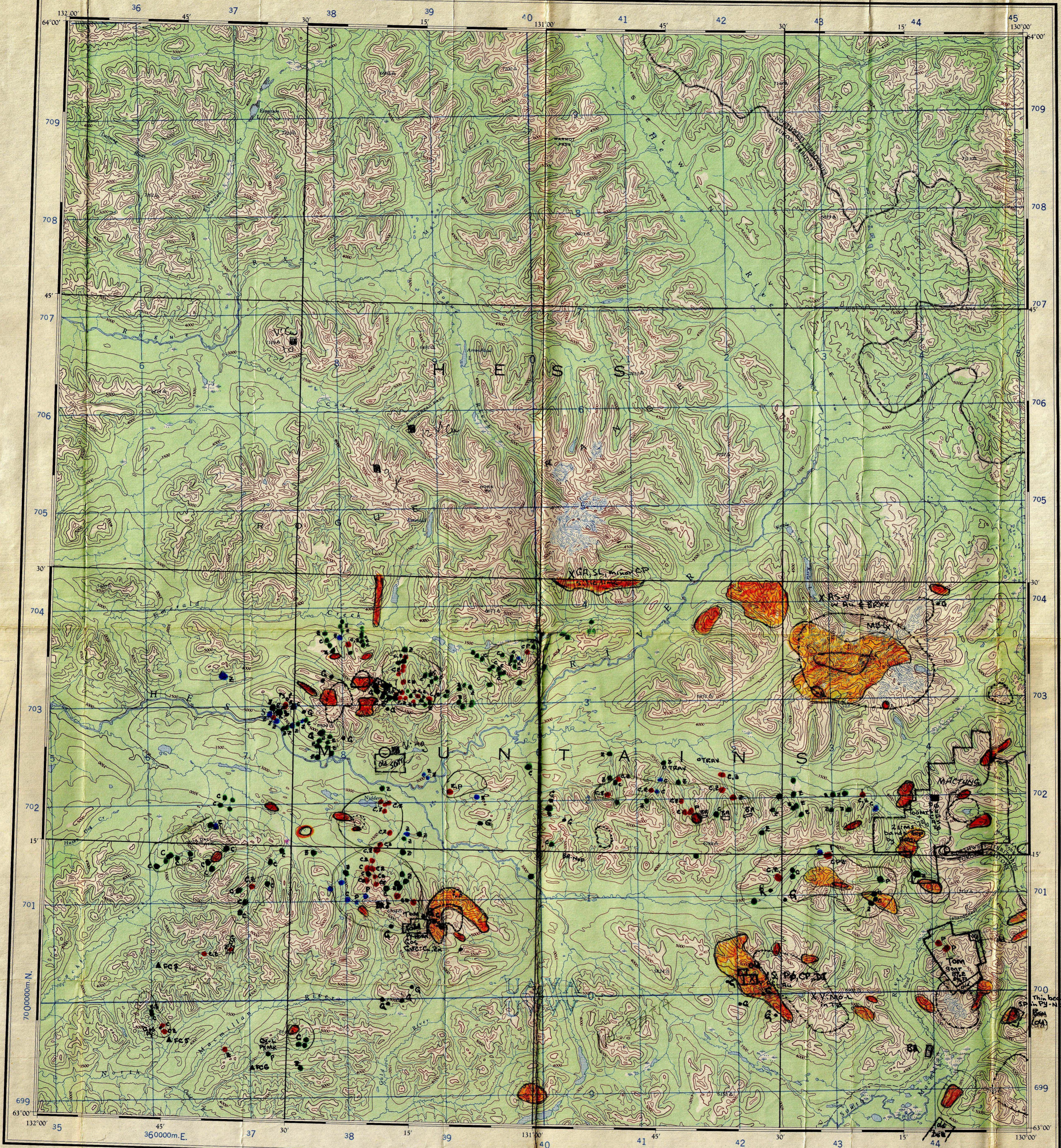


Refer to this Map as: 105-O EDITION 1 ASE SERIES A 502



GRID ZONE DESIGNATION	100,000 M. SQUARE IDENTIFICATION						
9V	<table border="1"> <tr><td>UA</td><td>VA</td><td>700</td></tr> <tr><td>UV</td><td>VV</td><td>40</td></tr> </table>	UA	VA	700	UV	VV	40
UA	VA	700					
UV	VV	40					
TO GIVE A REFERENCE TO NEAREST 1000 METRES							
EXAMPLE: HORIZONTAL CONTROL POINT							
SQUARE: Read letters of 100,000 m square immediately to left of point.	UA						
EASTING: Read number on grid line immediately to left of point. Estimate tenths of a square from this line eastward to point.	9						
	15						
	96						
NORTHING: Read number on grid line immediately below point. Estimate tenths of a square from this line northward to point.	3						
	19						
	39						
MILITARY GRID REFERENCE UA9639 (to nearest 1,000 metres)							
If reporting beyond 38° in any direction, prefix Grid Zone Designation as: 9VUA9639							

TEN THOUSAND METRE UNIVERSAL TRANSVERSE MERCATOR GRID ZONE 9

THE DECLINATION OF THE COMPASS NEEDLE 1957

The declination of the compass needle at any place along a broken line is the declination given on that broken line. At other places the declination is between those given on the neighbouring broken lines, as shown at the place marked A. The declination is between 35°30' E and 36°00' E. The declination of the compass needle is decreasing 5 minutes annually.

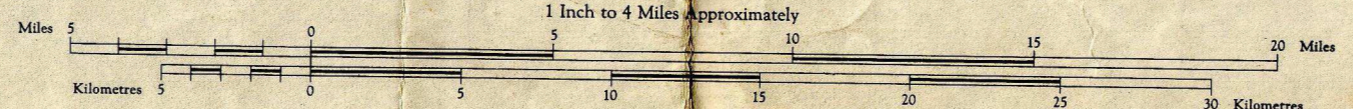
Produced and printed by the SURVEYS AND MAPPING BRANCH, DEPARTMENT OF MINES AND TECHNICAL SURVEYS, 1958, from air photographs taken in 1949 and 1954.

Universal Transverse Mercator Projection

NIDDERLY LAKE

YUKON TERRITORY - NORTHWEST TERRITORIES

Scale 1:250,000
1 Inch to 4 Miles Approximately

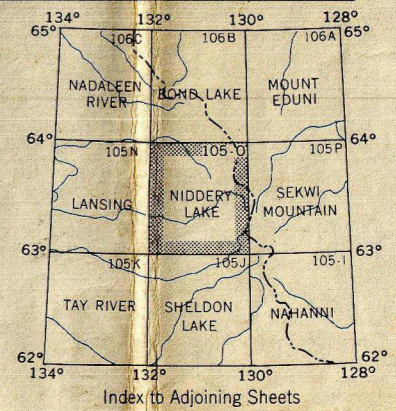


Contour interval 500 Feet
Elevations in Feet above Mean Sea Level
North American Datum 1927.

Copies may be obtained from the Map Distribution Office, Department of Mines and Technical Surveys, Ottawa.

- REFERENCE
- Wagon or winter road
 - Trail or portage
 - Boundary provincial
 - Village or settlement
 - Post office
 - Building or cabin
 - Horizontal control point
 - Astronomical position
 - Spot elevation (in feet)

- REFERENCE
- Streams: intermittent or dry
 - Glacier or snowfield
 - Rapids, falls
 - Marsh or swamp
 - Contours: elevated
 - depression
 - approximate
 - forest



NIDDERLY LAKE 105-O EDITION 1

Brock 000088