

Brock000207

**REPORT ON THE 1999
DIAMOND DRILLING PROGRAM
ON THE DOLLY VARDEN PROPERTY**

Watson Lake Mining District, Y.T.
NTS 105H-2
(61°08'N, 128°40'W)

for

GEE-TEN VENTURES INC.
298 - 1198 West Pender Street
Vancouver, B.C. V6E 2R1
(604)688-2638

by

CARL G. VERLEY, P.Geo.
Amerlin Exploration Services Ltd.
2150 - 1851 Savage Road
Richmond, B.C. V6V 1R1
(604)821-1088

November, 1999

Claims: LANCE 1 - 20, 22, 29 - 39 (YB15739-YB15744, YB45922-YB45927, YB56165-YB56172, YB56174, YB56181-YB56191)
Location: 128 kilometres north of Watson Lake, Yukon.
Date: June 28 to July 6, 1999

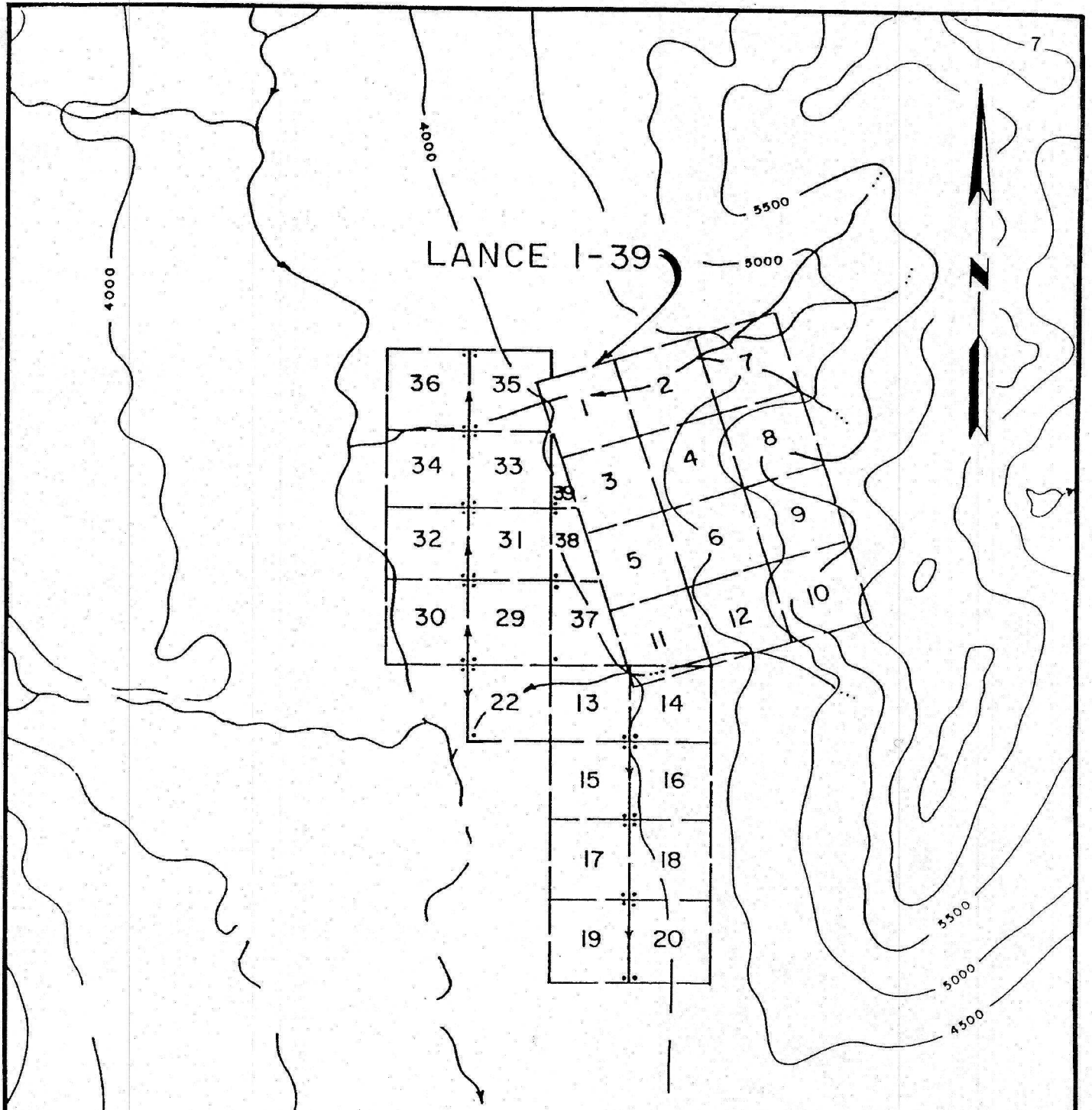
SUMMARY

Gee-Ten Ventures Inc. has an option to earn a 100% interest in 32 mineral claims situated in one contiguous block centered 128 kilometres north of Watson Lake, in the Logan Mountains, Watson Lake Mining District (105H/2), Yukon Territory. The property is accessible by helicopter.

The ground is located in an area underlain by Upper Devonian to Mississippian age metasediments. Easterly dipping mineralized bands containing sphalerite, galena, chalcopyrite, pyrite, pyrrhotite and scheelite, occur associated with calc-silicate minerals and quartz lenses within the metasedimentary succession. Some of the quartz lenses are believed to be hydrothermal in origin and, therefore, intrusive-related. The metasediments were intruded by Cretaceous quartz monzonite, which was responsible for developing skarn mineralization. Lead isotope work on galena from the skarn bands gives an age of less than 70 million years and confirms that the mineralization is intrusive related. Structural evidence suggests that the host sequence has been folded into a southerly facing recumbent isocline. This structure may thicken and enhance the mineral potential of the property. A linear easterly trending magnetic low is centered over the suspect hinge of the fold. The magnetic low feature may also mark a zone where hydrothermal quartz occurs in the metasedimentary section.

Diamond drilling conducted during the 1999 field season (5 holes, 439 metres) intersected several of the mineralized bands. The best of which averaged 3.10% Zn, 2.33% Pb, 0.12% Cu and 2.33 gmt Ag, over 2.50 metres (8.2'), including: 21.40% Zn, 16.90% Pb, 1.18% Cu and 248.0 gmt Ag over 0.24 metres. These results demonstrate that potentially economic base metal values occur on the property. In addition, anomalous gold values (up to 645 ppb) and high bismuth values (to 578 ppm) are associated with the mineralization. The high gold and bismuth values and the existence of hydrothermal quartz zones suggest that there is potential on the property for locating *thermal aureole* or *intrusion related gold deposits* similar to the *Pogo* deposit in Alaska. Further work should, therefore, focus on testing the property for this type of deposit. In addition, further work should also be directed toward drilling remaining ground EM and magnetic anomalies to test these for thicker accumulations of base metal mineralization.

A program of geophysics (airborne magnetometer and EM surveys; ground CSAMT surveys) and continued diamond drilling is recommended to continue evaluation of the property. The estimated cost of this work is \$390,000.



CLAIM LOCATION PLAN
 DOLLY VARDEN PROPERTY
 (LANCE CLAIMS)

MOUNT BILLINGS AREA, 105H/2
 WATSON LAKE MINING DISTRICT, YUKON

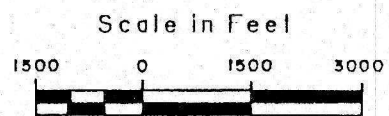
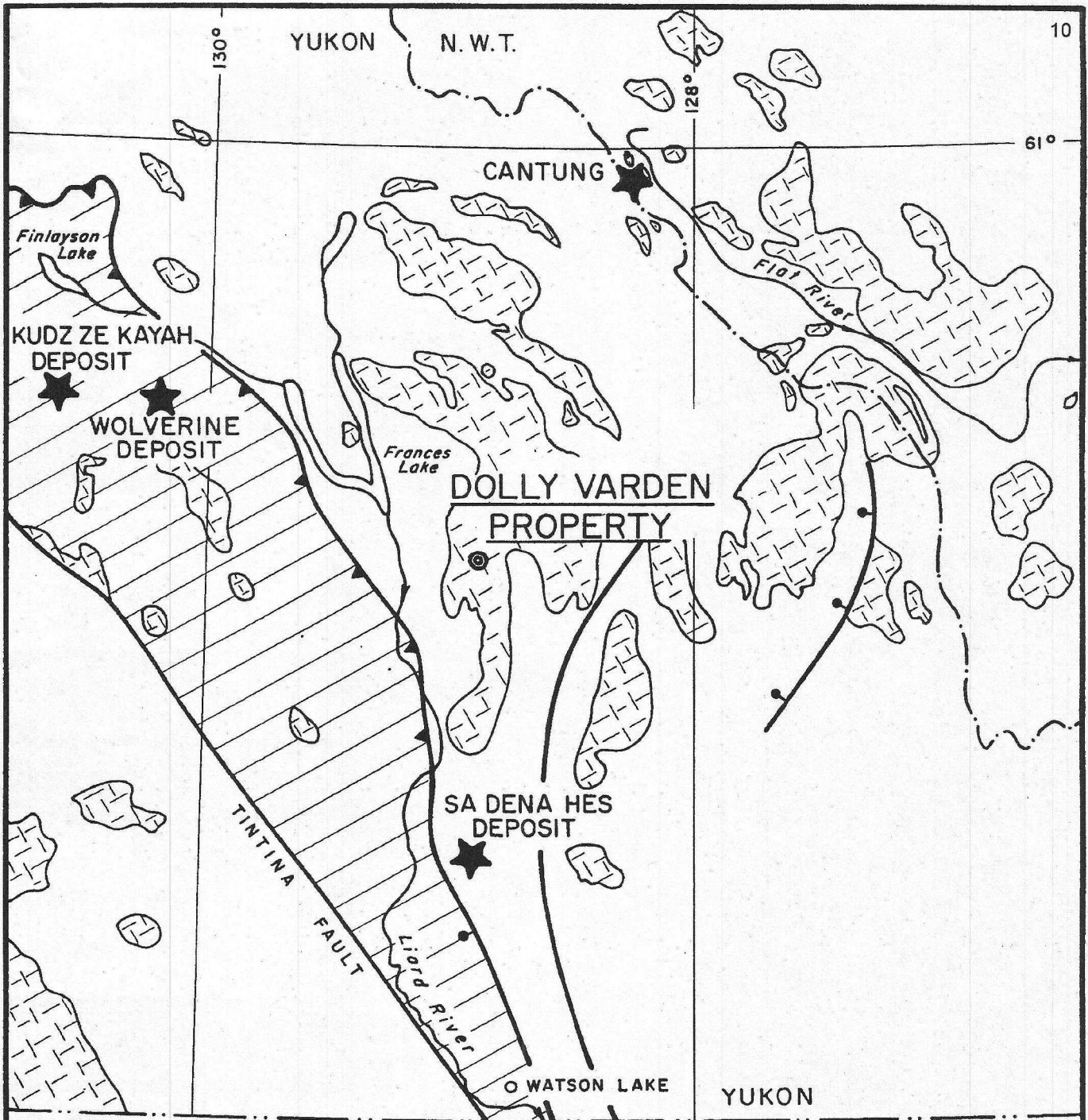


FIGURE 2

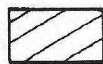


MID-CRETACEOUS - TERTIARY (?)



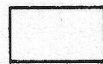
SYN - AND POST-TECTONIC
GRANITIC INTRUSIVES

PALEOZOIC



YUKON - TANANA TERRANE
METASEDIMENTS AND VOLCANICS
MAY INCLUDE SOME SLIDE MT. TERRANE

PRECAMBRIAN - PALEOZOIC



ANCESTRAL NORTH AMERICA SEDIMENTS



THRUST AND NORMAL FAULTS

GEOLOGICAL SETTING
DOLLY VARDEN
PROPERTY
YUKON TERRITORY



FIGURE 3

MINERALIZATION

On the Dolly Varden property the silver-lead-zinc+/-copper-tungsten mineralization is located within quartzite layers in the phyllite sequence on the northeastern part of the property at the "Creek zone". Mineralized float boulders were found on the property during initial prospecting by Cominco (Mawer, 1979). Cominco trenched the source area of the float and exposed a mineralized band over a strike length of 150 metres. Attempts at exposing the horizon beyond this appear to have met with difficulty because of increasing thickness of overburden.

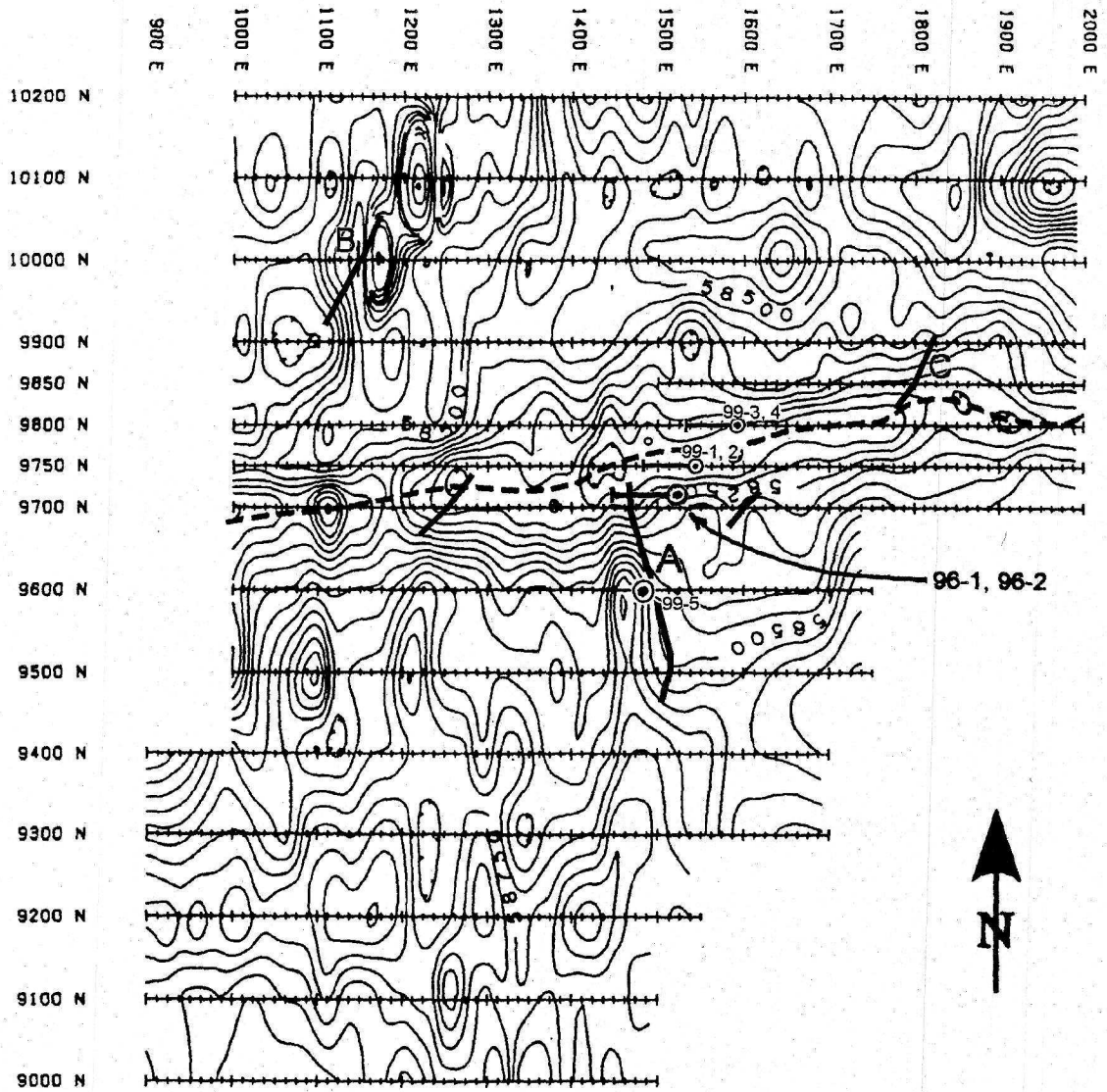
During the 1996 season 2 diamond drill holes, from the same setup, were drilled to test the skarn horizons located by the trenching. This activity was successful in locating a number of mineralized bands (Verley, 1997). In 1999, 5 holes additional were put into the property to test continuity of mineralization along the magnetic low feature as well as to test one of the EM conductors (Figure 4). The best intercept in 1999 was in hole 99-1, from 48.55 to 51.05 metres, and averaged 3.10% Zn, 2.33% Pb, 0.12% Cu and 2.33 gmt Ag, over 2.50 metres (8.2'), including: 21.40% Zn, 16.90% Pb, 1.18% Cu and 248.0 gmt Ag over 0.24 metres.

Mineralization at the Creek zone occurs either as massive bands of sphalerite, galena and chalcopyrite with minor scheelite in contact with hydrothermal quartz or as disseminations of sphalerite and galena within quartz lenses or as disseminations of sphalerite with lesser galena in diopside-rich layers. Lead isotope work, conducted at the University of B.C., on 2 galena-bearing samples from drill hole 96-1, at depths of 55.62 and 68.58 metres, returned $^{206}\text{Pb}/^{204}\text{Pb}$ ratios of 19.44159 and 19.46115 and $^{207}\text{Pb}/^{204}\text{Pb}$ ratios of 15.73011 and 15.73775, respectively (C.I. Godwin, personal communication). This data indicates that the mineralization has an age of less than 70 million years based on the growth curves for shale-hosted zinc-lead deposits (C.I. Godwin et al., 1982). This result clearly ties the mineralization to the intrusive even though the mineralization is not in direct contact with an intrusive body. Relatively high bismuth values (up to 578 ppm) and anomalous gold (up to 645 ppb) associated with the mineralization suggest that

there is potential, that has not been tested, for finding *thermal aureole* or *intrusion related gold deposits* on the property. An example of such a deposit is the **Pogo** in Alaska, which is currently being developed by Teck and Sumitomo Mining Corp. Pogo has a resource estimated at 5,200,000 oz of gold (Smith et al 1999). The deposit is contained in near flat-lying lenses of hydrothermal quartz with attendant sericite alteration in the wall rocks. Gold is associated with high bismuth. Both of these features are similar to the habit and geochemical signature of mineralization on the Dolly Varden property. Therefore, further work on the Dolly Varden property should focus on this type of deposit. Additional testing of ground EM and magnetic targets outlined in the 1994 survey should also be undertaken in order to test these for thicker accumulations of base metals. In particular, anomaly B, which has a coincident magnetic high & EM conductor at 10,000N, 1,150E, should be drill tested during the course of the program.


Table 3. Drill Hole Assay Data

Hole No.	Sample No.	Interval (m)			Zn	Pb	Cu	Ag
		From	To	Width	%	%	%	G/T
99-1	8962	48.55	- 50.14	1.59	0.72	0.28	0.01	8.5
99-1	8963	50.14	- 50.38	0.24	21.40	16.90	1.18	248.0
99-1	8964	50.38	- 51.05	0.67	2.20	1.98	0.01	38.6
99-1	Averaged	48.55	- 51.05	2.50	3.10	2.33	0.12	2.33
99-1	8965	57.45	- 58.45	1.00	0.92	0.10	0.01	10.5
99-1	8966	58.45	- 59.28	0.83	0.56	0.05	0.01	5.9
99-1	8967	68.89	- 70.10	1.21	0.59	0.41	0.01	44.1
99-1	8968	70.10	- 70.87	0.77	2.04	0.09	0.01	11.8
99-1	8969	70.87	- 72.72	1.85	0.81	0.05	0.01	11.6
99-1	8971	74.67	- 75.90	1.23	0.49	0.32	0.01	8.8
99-2	8973	48.16	- 50.55	2.39	2.42	0.29	0.03	31.5
99-2	8975	69.04	- 70.25	1.21	2.06	0.92	0.23	38.1
99-2	8976	70.25	- 70.47	0.22	8.64	9.20	0.46	132.0
99-2	8977	70.47	- 71.78	1.31	0.24	0.34	0.01	4.6
99-2	Averaged	69.04	- 70.47	1.43	3.07	2.19	0.27	52.55
99-2	8979	72.30	- 72.85	0.55	1.42	1.86	0.01	2.9
99-2	8980	72.85	- 74.13	1.28	0.60	0.90	0.01	4.2
99-3	8982	73.24	- 74.37	1.13	2.84	0.08	0.03	15.6



⊙ 96-1 Diamond Drill Hole Location  EM Conductor Axis

Note: Refer to Plate 1 for location with respect to claims.

 - Axis of magnetic field low



Contour interval: 50 nT

SNOWDRIFT MINERALS INC.	Claims: LANCE I-39	
DOLLY VARDEN PROPERTY	Mining District: Watson Lake, Y.T.	
Total Magnetic Field	NTS: 105 H2	Scale: 1:3300
	Drawn by: MAP.	
AMEROK GEOPHYSICS	DATE: 12 SEP 94	Figure 4