

FORMATION TABLE: CHANCE L-09/300L086610137300

TABLE/TYPE: 4/LOG

AUTHOR: DIXON & PUGH

DATE: 87/09/22

THU, OCT 24, 1991, 11:13 AM

NUMBER FORMATIONS/OLDEST PENETRATED: 10/FORD LAKE SH
 COMMENT: DIXON-MESOZOIC PUGH-PALEOZOIC

LINE	FORMATION	DEPTH(F)	ELEV(F)	QU-TAG	DEPTH(M)	ELEV(M)
1	EAGLE PLAIN GRP	17.0	1,752.0		5.3	534.0
2	CODY CREEK FM	17.0	1,752.0		5.3	534.0
3	BURNHILL CREEK FM	1,645.0	1,104.0		501.4	337.8
4	FISHING BRANCH FM	2,000.0	-531.0		701.0	-161.8
5	PARKIN FM	2,610.0	-841.0		795.5	-256.3
6	PARKIN SS MBR	3,092.0	-1,323.0		940.4	-403.3
7	WHITESTONE RIVER FM	3,278.0	-1,509.0		999.1	-459.9
8	HART RIVER FM	4,033.0	-2,064.0		1,229.3	-690.1
9	CHANCE SS MBR	4,257.0	-2,408.0		1,397.5	-758.3
10	FORD LAKE SH	6,694.0	-4,953.0		2,040.3	-1,501.1
	BOTTOM TD	8,648.0	-6,079.0		2,635.0	-2,096.7

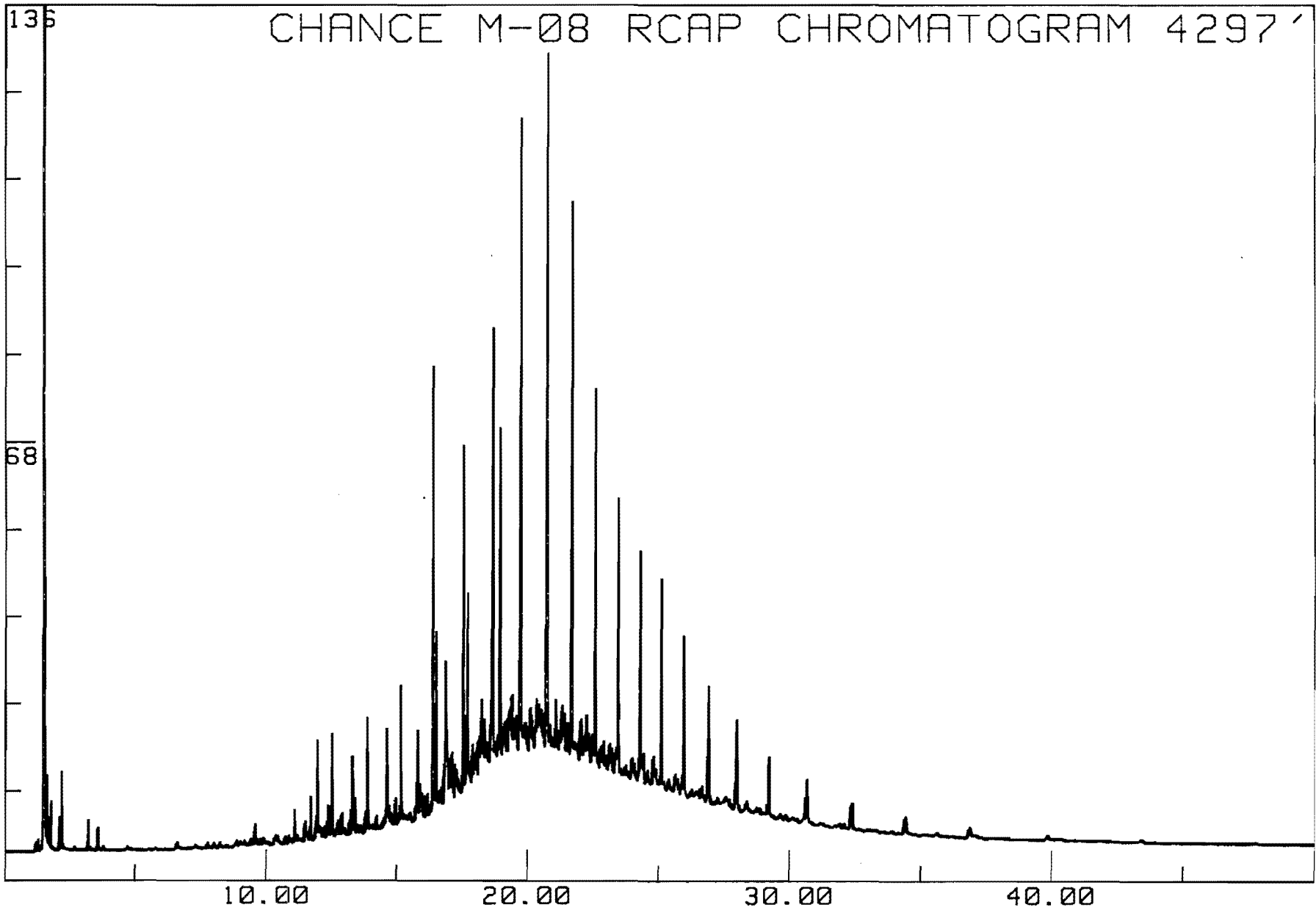
WELL NAME	OWNER	YR	CORE	TOP	BOTTOM	LOCATION	TYPE
CHANCE YT NO. 1	WEST. MIN	60	1	1255	1260	C-5129	MICRO
			1	1260	1265	C-5130	
			1	1265	1270	C-5131	
			1	1270	1275	C-5132	
			1	1275	1279	C-5133	
			2	1280	1285	C-5134	
			2	1285	1290	C-5135	
			2	1290	1295	C-5136	
			2	1295	1300	C-5137	
			2	1300	1305	C-5138	
			2	1305	1310	C-5139	
			2	1310	1315	C-5140	
			3	1315	1320	C-5141	
			3	1320	1325	C-5142	
			3	1325	1330	C-5143	
			3	1330	1335	C-5144	
			3	1335	1340	C-5145	
			3	1340	1345	C-5146	
			4	2035	2040	C-5147	
			4	2040	2045	C-5148	
			5	2326	2330	C-5149	
			5	2330	2335	C-5150	
			5	2335	2341	C-5151	
			6	2415	2420	C-5152	
			6	2420	2425	C-5153	
			6	2425	2430	C-5154	
			7	3428	3433	C-5155	
			7	3433	3438	C-5156	
			7	3438	3443	C-5157	
			7	3443	3448	C-5158	
			7	3448	3453	C-5159	
			7	3453	3458	C-5160	

WELL NAME	OWNER	YR	CORE	TOP	BOTTOM	LOCATION	TYPE
CHANCE YT NO. 1	WEST. MIN	60	8	4055	4060	C-13349	CONOD
			10	4255	4260	C-13350	
			10	4260	4265	C-13351	
			18	4597	4604	C-13352	
			23	6038	6043	C-13353	
			26	6571	6576	C-13354	
			28	7803	7808	C-13355	

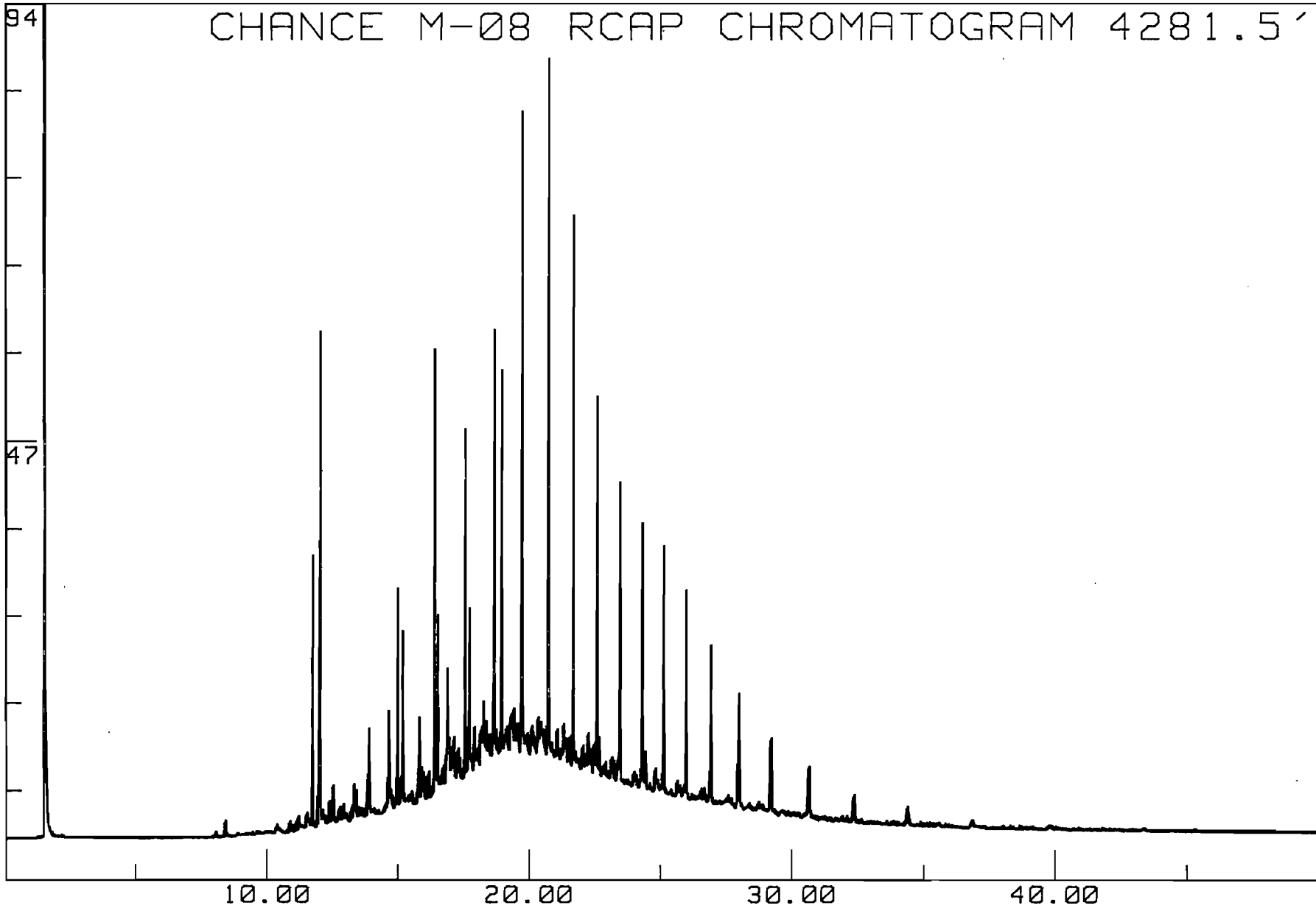
WELL NAME	OWNER	YR	CORE	TOP	BOTTOM	LOCATION	TYPE
CHANCE YT NO. 1	WEST. MIN 60	1		1259		C-13328	PALYN
		1		1270.5		C-13329	
		2		1284		C-13330	
		2		1291		C-13331	
		3		1329		C-13332	
		4		2039.5		C-13333	
		5		2334		C-13334	
		6		2425		C-13335	
		7		3432.5		C-13337	
		7		3439		C-13336	
		7		3451.5		C-13338	
		8		4059		C-13339	
		8		4066		C-13340	
		9		4156		C-13341	
		12		4331.5		C-13342	
		19		4743.5		C-13343	
		23		6033.5		C-13344	
		25		6392		C-13345	
		26		6574		C-13346	
		27		7010.4		C-13347	
		28		7815		C-13348	

WELL NAME	OWNER	YR	CORE	TOP	BOTTOM	LOCATION	TYPE
CHANCE YT NO. 1	WEST. MIN	60	8	4050	4067	C-4364	MACRO
			9	4153	4158	C-4363	
			19	4743	4753	C-4360	
			26	6571	6600	C-4361	

WELL NAME	OWNER	YR	CORE	TOP	BOTTOM	LOCATION	TYPE
CHANCE YT NO. 1	SMWM	60		3950	4030	C-30236	T.SEC
			8	4056		C-30236	
			8	4058		C-30236	
			8	4063		C-30236	
			8	4063	4067	C-30236	
			10	4255		C-30236	
			10	4268		C-30236	
			10	4273		C-30236	
			11	4280		C-30236	
			11	4282		C-30236	
				4290	4300	C-30236	
			11	4310		C-30236	
			12	4322		C-30236	
			8	4324		C-30236	
			12	4346		C-30236	
			8	4358		C-30236	
			8	4364		C-30236	
			13	4366		C-30236	
			13	4390		C-30236	
				4400	4410	C-30236	
				4440	4445	C-30236	
				4500	4505	C-30236	
			16	4545		C-30236	
				4560	4565	C-30236	
			17	4580		C-30236	
			18	4600		C-30236	
				4610	4615	C-30236	
				4670	4675	C-30236	
			19	4744		C-30236	
			19	4751		C-30236	
				4780	4785	C-30236	
				4840	4845	C-30236	
				4930	1935	C-30236	
			20	5194		C-30236	
			21	5211		C-30236	
			22	5533		C-30236	
			23	6048	6051	C-30236	
			24	6092		C-30236	
			24	6100		C-30236	
			25	6395	6400	C-30236	
			25	6408		C-30236	
			25	6412		C-30236	
			26	6576	6581	C-30236	
			26	6590	6595	C-30236	
				6700	6800	C-30236	
			28	7806		C-30236	
			28	7818	7824	C-30236	
				8500	8600	C-30236	



CONFIDENTIAL
UNTIL 01 May 94



CONFIDENTIAL
UNTIL 01 May 94

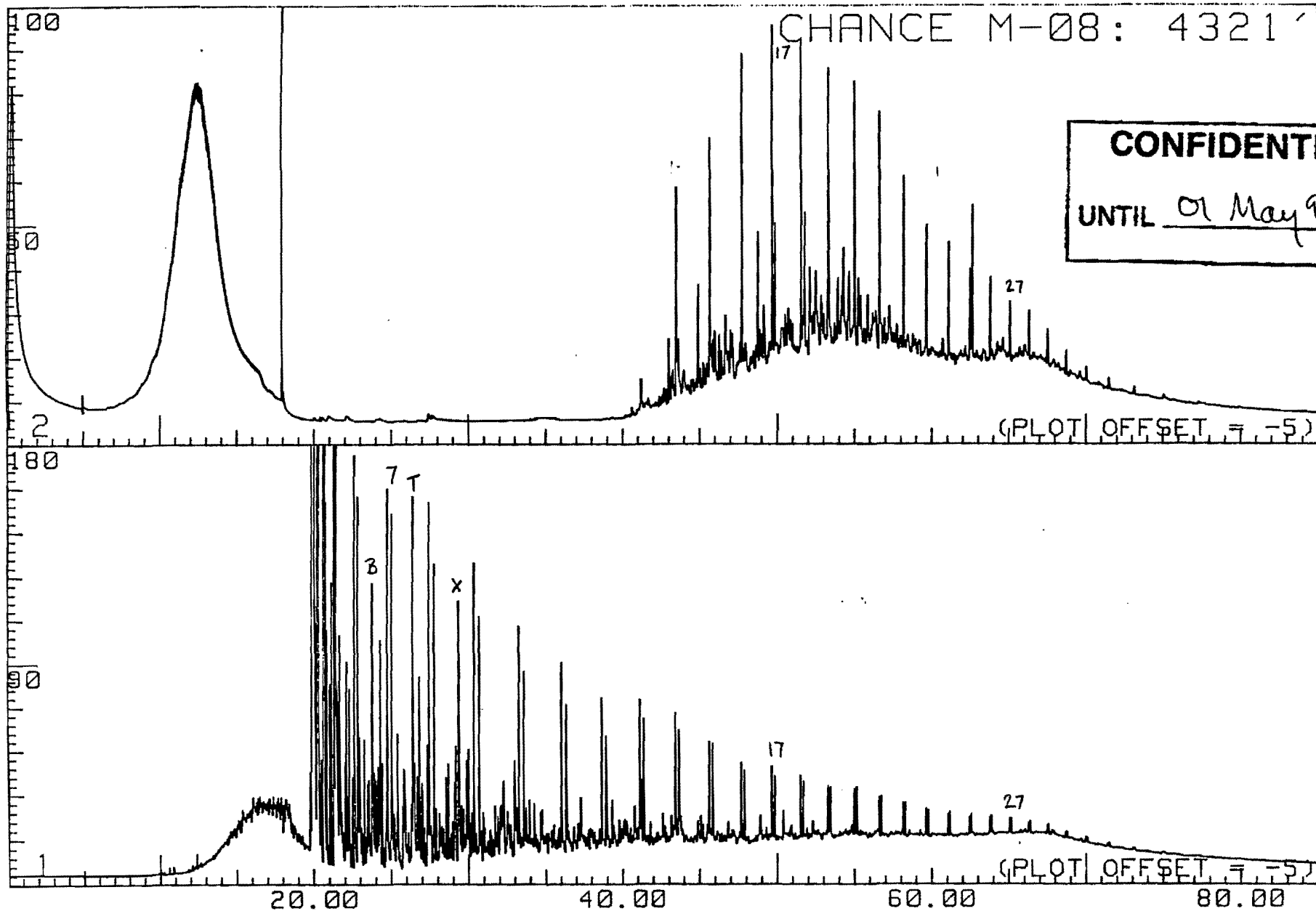


Figure 3 Pyrolysis gas chromatogram of the whole rock at 4321' from the bitumen zone of the Chance M-08 well, Eagle Plain, Yukon, Canada.

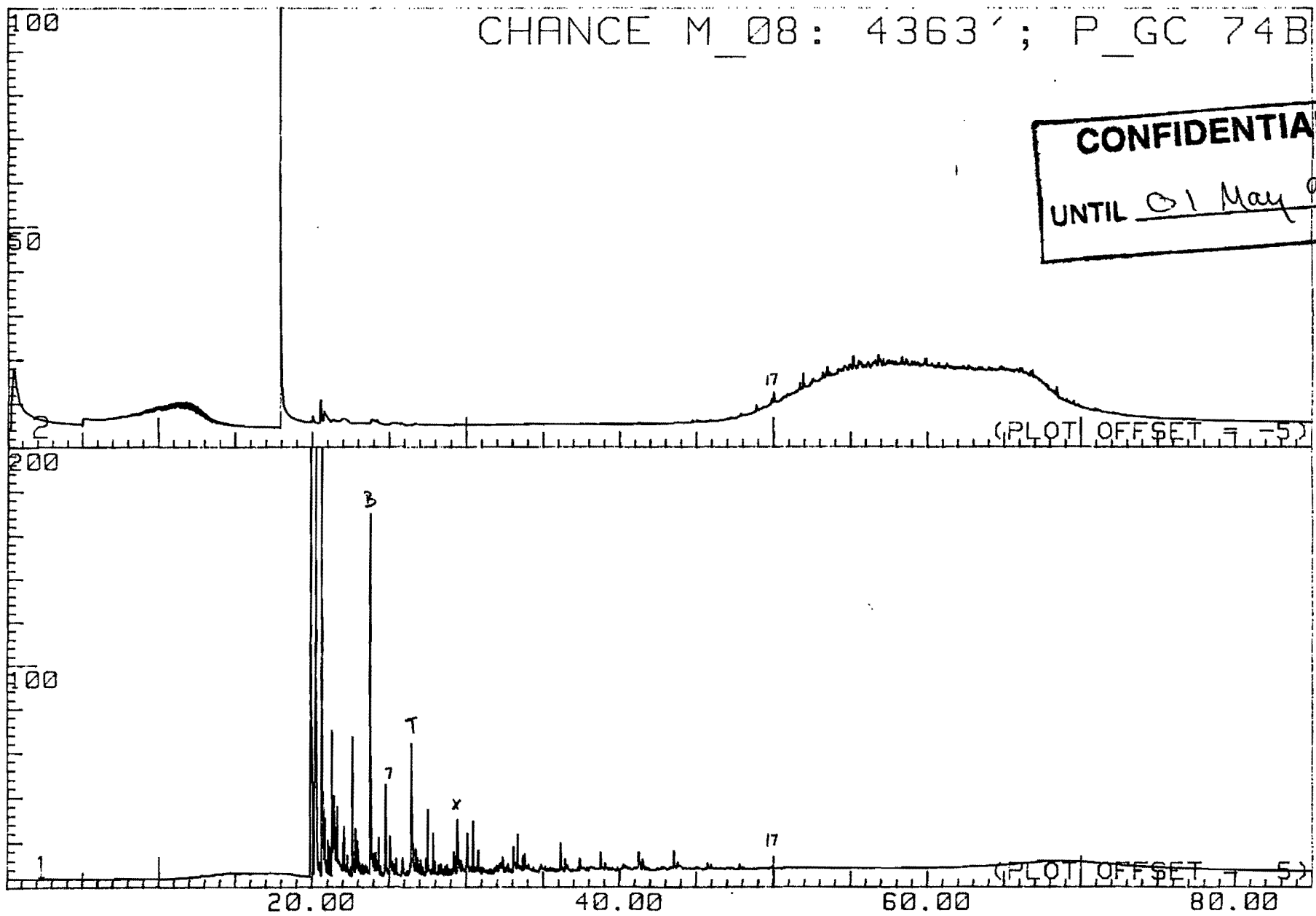


Figure 8 Pyrolysis gas chromatogram of the whole rock at 4363' from the oil zone of the Chance M-08 well, Eagle Plain, Yukon, Canada.

PLD NAME--	DEPTH	S1	S2	TMAXADJ	PI	TOC	HI
PLD NO.---	1	5	8	9	3	2	6
1-	1255.	0.02	1.02	436.	0.02	1.31	78.
2-	1265.	0.00	0.00	443.	0.00	0.00	0.
3-	1275.	0.13	1.18	440.	0.11	1.29	91.
4-	1285.	0.19	1.06	443.	0.15	1.38	77.
5-	1295.	0.04	0.14	436.	0.22	0.70	20.
6-	1305.	0.08	0.64	438.	0.11	0.93	69.
7-	1315.	0.16	1.05	438.	0.15	1.31	80.
8-	1325.	0.10	0.56	438.	0.15	0.79	71.
9-	1335.	0.11	0.49	448.	0.18	1.14	43.
10-	1345.	0.21	1.33	435.	0.14	1.58	84.
11-	2035.	0.17	1.93	439.	0.08	1.70	114.
12-	2047.	0.15	1.73	441.	0.08	1.28	135.
13-	2326.	0.55	3.39	433.	0.14	2.03	167.
14-	2336.	0.63	1.87	431.	0.25	1.17	160.
15-	2342.	0.13	0.32	435.	0.29	0.30	107.
16-	2414.	0.75	3.44	432.	0.18	1.94	177.
17-	2424.	0.39	2.45	434.	0.14	1.58	155.
18-	2430.	0.24	2.10	443.	0.10	1.64	128.
19-	3428.	0.12	1.01	437.	0.11	0.77	131.
20-	3438.	0.10	0.98	439.	0.09	0.75	131.
21-	3448.	0.24	1.21	436.	0.17	0.84	144.
22-	3458.	0.09	0.75	436.	0.11	0.70	107.
23-	4743.	0.03	0.01	443.	0.78	0.03	33.
24-	4746.	0.83	4.58	443.	0.15	1.33	352.
25-	4753.	0.02	0.00	446.	1.00	0.07	0.
26-	6033.	0.91	1.90	446.	0.32	0.92	207.
27-	6043.	1.46	1.99	442.	0.42	0.92	216.
28-	6051.	1.36	7.39	447.	0.21	2.63	281.
29-	6185.	0.28	0.10	453.	0.74	0.16	62.
30-	6395.	0.23	0.10	387.	0.70	0.13	77.
31-	6405.	1.05	3.78	446.	0.22	0.68	856.
32-	6408.	0.18	0.19	448.	0.49	0.11	173.
33-	6571.	2.08	11.02	445.	0.16	2.49	443.
34-	6581.	0.39	1.42	442.	0.39	0.94	151.
35-	6591.	0.22	0.40	457.	0.35	0.19	211.
36-	6599.	0.63	1.08	440.	0.37	0.65	166.
37-	7010.	0.45	2.55	448.	0.15	1.25	204.
38-	7020.	0.39	1.61	449.	0.20	1.12	144.
39-	7027.	0.47	2.23	447.	0.17	1.20	186.
40-	7803.	0.41	1.08	458.	0.28	1.13	96.
41-	7813.	0.46	1.34	454.	0.26	1.21	111.
42-	7813.	0.44	1.38	452.	0.24	0.15	920.
43-	7823.	0.38	1.79	456.	0.24	1.10	163.
44-	7823.	0.60	1.66	455.	0.27	0.18	922.
45-	7829.	0.40	0.83	462.	0.33	0.11	755.

**** NUMBER OF VECTORS TESTED = 45

**** NUMBER OF VECTORS LISTED = 45

*** PROGRAM RNDLST COMPLETED WITH A CODE OF 0 ****

*** JOB VBMSEL0 WITH CHRGE NO. 82Q51W00 STEP NO. 2 ON SYSTEM HDCA AT 8:52: 2

*** PROCEDURE MSPMSS COMPLETED AT 08.52.06 ON 10/02/91 WITH IBM SYSTEM CODE OF 'X'0000' AND MSP SYSTEM CODE OF 0 ***

***MLNK** MSP SYSTEM COMPLETION CODE WRITTEN TO DSRN= 94 ***

CONFIDENTIAL
 30/08/93
 UNTIL ~~XXXXXXXXXX~~ *eyj*