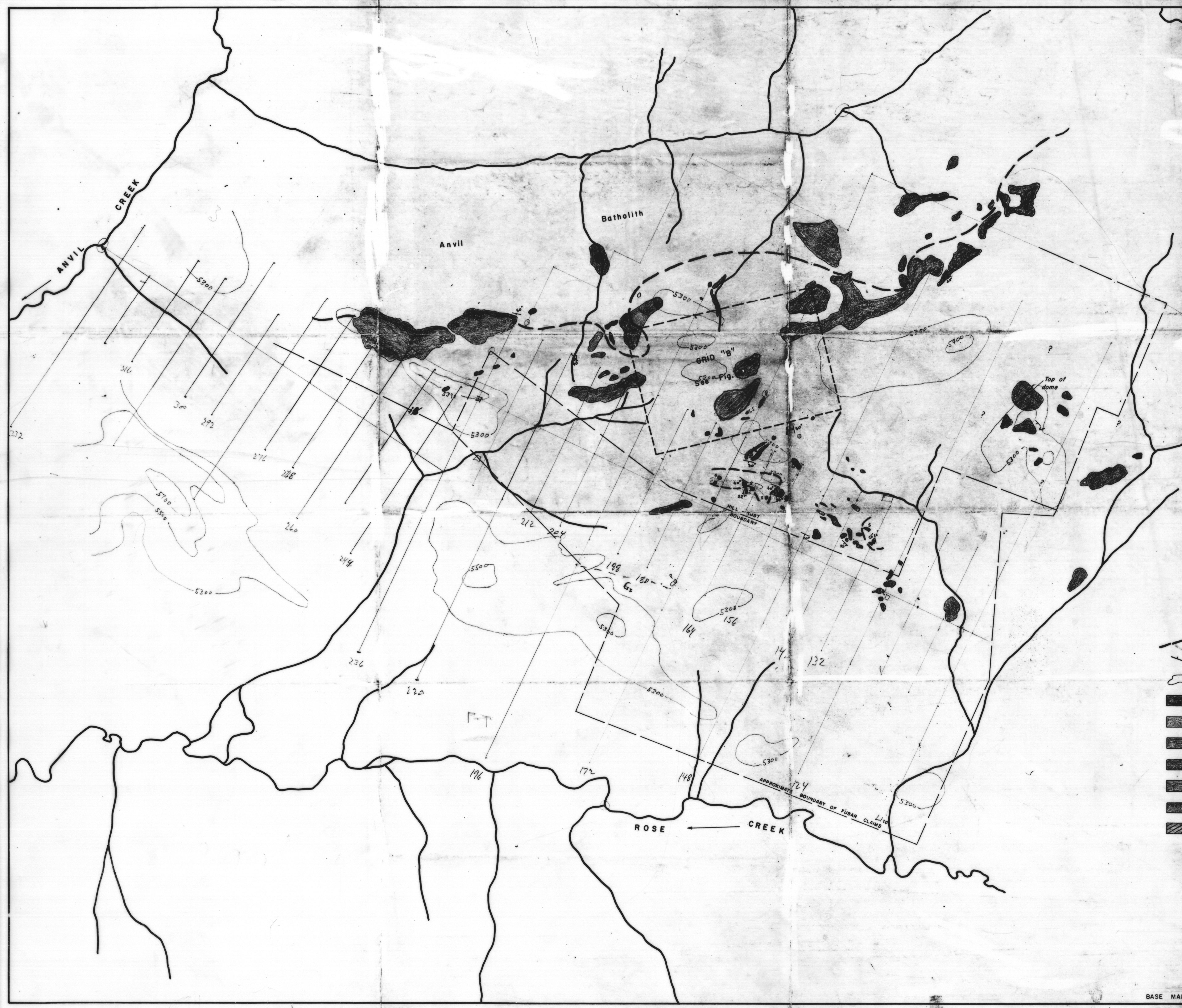
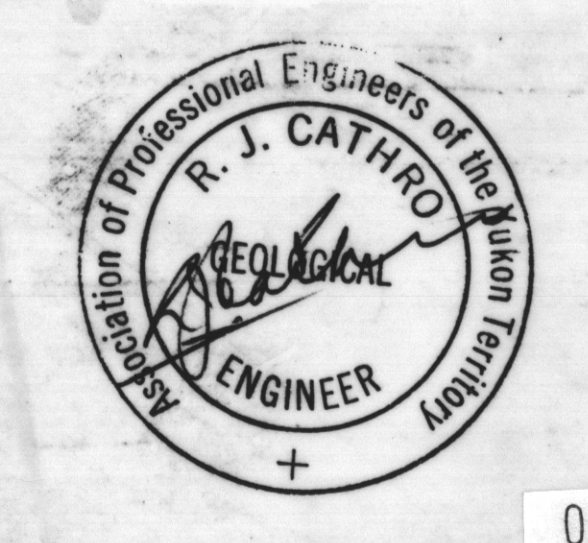
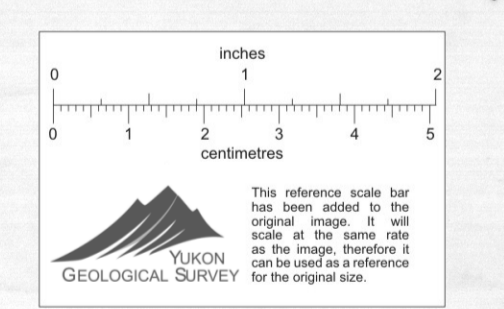


Hill - Rust Claims 105A 5/6
Geology - Drawing No. 2



- Legend**
- DISSEM. PYRRHOTITE, CHALCOPYRITE
 - GEOLOGICAL CONTACT (OBSERVED, ASSUMED)
 - STRIKE & DIP OF SCHISTOSITY
 - OUTCROP OR FROST HEAVE OF LOCAL ORIGIN
 - PHYLITE (LOCALLY QTZ. BIOTITE SCHIST)
 - GREENSTONE
 - QUARTZITE (PHYLITIC)
 - OLIVINE GABRO
 - LIMY HORIZONS SKARN
 - ANVIL BATHOLITH - GRANODIORITE, DIORITE
 - GNEISSIC GRANODIORITE



GEOLOGY	
HILL - RUST CLAIMS	
ANVIL - VANGORDA DISTRICT, YUKON	
ARCHER & CATHRO Consulting Geological Engineers	
DATE	21 July 1967
DRAWN	<i>[Signature]</i>
SCALE	Approx. 1"=1320' DWG. 2.

BASE MAP DRAWN FROM UNCORRECTED AIR PHOTO MOSAIC

000344