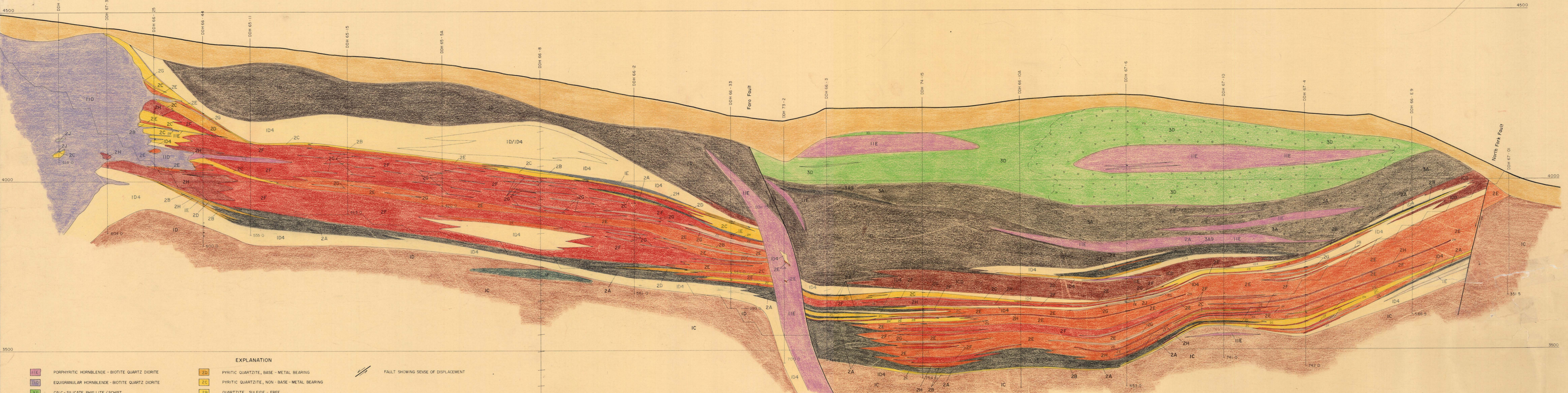


NW

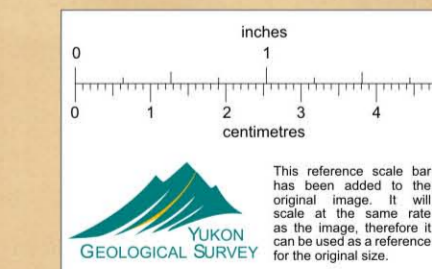
SE

SECTION 102 SECTION 104 SECTION 106 SECTION 108 SECTION 110 SECTION 112 SECTION 114 SECTION 116 SECTION 118 SECTION 120 SECTION 122 SECTION 124 SECTION 126 SECTION 128 SECTION 130 SECTION 132



- | | | |
|---|--|-------------------------------------|
| 11E PORPHYRITIC HORNBLENDE - BIOTITE QUARTZ DIORITE | 2D PYRITIC QUARTZITE, BASE - METAL BEARING | FAULT SHOWING SENSE OF DISPLACEMENT |
| 11D EQUIGRANULAR HORNBLENDE - BIOTITE QUARTZ DIORITE | 2C PYRITIC QUARTZITE, NON - BASE - METAL BEARING | BRECCIA, POST - D ₂ |
| 3D CALC - SILICATE PHYLLITE / SCHIST | 2B QUARTZITE, SULFIDE - FREE | MAGNETITE |
| 30 CARBONACEOUS TRANSITION ZONE PHYLLITE / SCHIST | 2A RIBBON - BANDED, GRAPHITIC QUARTZITE | |
| 3A TRANSITION ZONE PHYLLITE / SCHIST (UNITS 1/3) | 2E METABASITE | |
| 2K MASSIVE SULFIDES, PYRITE - FE - CARBONATE FACIES | 2F GRAPHITIC SCHIST | |
| 2J MASSIVE, NON - PYRITIC SULFIDES / OXIDES | 104 WHITE MICA ENVELOPE DEVELOPED IN 1D/1C | |
| 2H MASSIVE SULFIDES, PYRRHOTITE FACIES | 103 CARBONACEOUS, BIOTITE - MUSCOVITE - ANDALUSITE SCHIST | |
| 2G MASSIVE SULFIDES, BARITE FACIES | 102 TRANSITION ZONE SCHIST BETWEEN 1D/1C | |
| 2F MASSIVE SULFIDES, "BUCKSHOT" FACIES | 101 QUARTZ - FELDSPATHIC, BIOTITE - MUSCOVITE GNEISS SCHIST | |
| 2E MASSIVE PYRITIC SULFIDES | | |

EXPLANATION



CYPRUS ANVIL MINING CORPORATION

GEOLOGICAL INTERPRETATION
 LONG SECTION 22
 FARO DEPOSIT

REVISED BY: _____
 Scale: 1" = 100'
 COMPILED BY: D. S. J.
 DATE: MARCH, 1977
 DRAWN BY: C. L. C.
 DATE: MARCH, 1977

001001