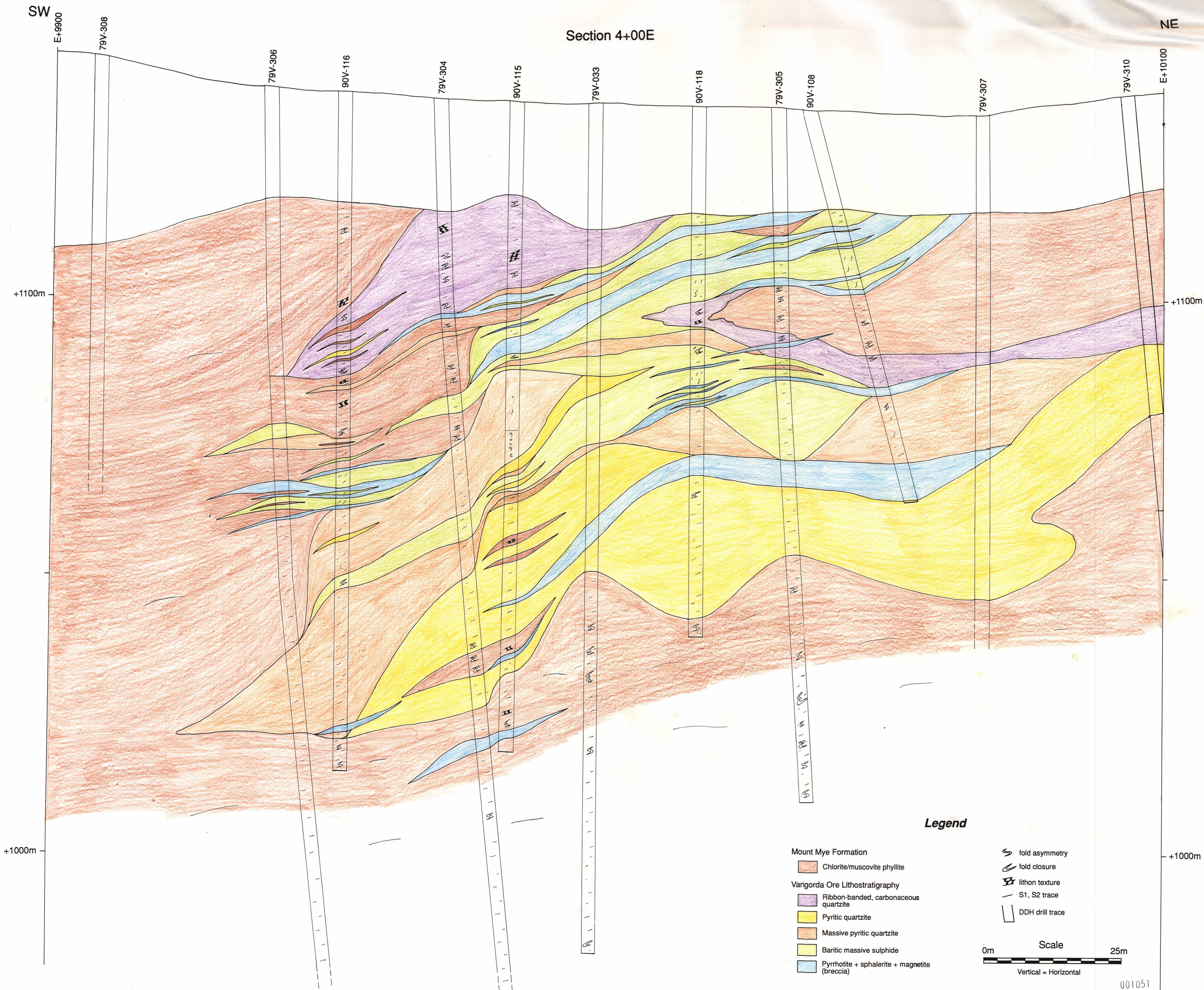


Section 4+00E



Legend

- |   |   |
|---|---|
| <p><b>Mount Mye Formation</b></p> <ul style="list-style-type: none"> <li><span style="display: inline-block; width: 15px; height: 10px; background-color: #e67e22; border: 1px solid black; margin-right: 5px;"></span> Chlorite/muscovite phyllite</li> </ul> <p><b>Vangorda Ore Lithostratigraphy</b></p> <ul style="list-style-type: none"> <li><span style="display: inline-block; width: 15px; height: 10px; background-color: #9b59b6; border: 1px solid black; margin-right: 5px;"></span> Ribbon-banded, carbonaceous quartzite</li> <li><span style="display: inline-block; width: 15px; height: 10px; background-color: #f1c40f; border: 1px solid black; margin-right: 5px;"></span> Pyritic quartzite</li> <li><span style="display: inline-block; width: 15px; height: 10px; background-color: #f39c12; border: 1px solid black; margin-right: 5px;"></span> Massive pyritic quartzite</li> <li><span style="display: inline-block; width: 15px; height: 10px; background-color: #fff9c4; border: 1px solid black; margin-right: 5px;"></span> Baritic massive sulphide</li> <li><span style="display: inline-block; width: 15px; height: 10px; background-color: #5dade2; border: 1px solid black; margin-right: 5px;"></span> Pyrrhotite + sphalerite + magnetite (breccia)</li> </ul> | <ul style="list-style-type: none"> <li><span style="display: inline-block; width: 10px; height: 10px; border-bottom: 1px dashed black; margin-right: 5px;"></span> fold asymmetry</li> <li><span style="display: inline-block; width: 10px; height: 10px; border-left: 1px dashed black; margin-right: 5px;"></span> fold closure</li> <li><span style="display: inline-block; width: 10px; height: 10px; border: 1px dashed black; margin-right: 5px;"></span> lithon texture</li> <li><span style="display: inline-block; width: 10px; height: 10px; border: 1px dashed black; margin-right: 5px;"></span> S1, S2 trace</li> <li><span style="display: inline-block; width: 10px; height: 10px; border: 1px dashed black; margin-right: 5px;"></span> DDH drill trace</li> </ul> <p style="text-align: center;"><b>Scale</b></p> <p>0m <span style="display: inline-block; width: 100px; border-bottom: 1px solid black; margin: 0 5px;"></span> 25m</p> <p style="text-align: center;">Vertical = Horizontal</p> |
|---|---|

\* Co-ordinates are in mine grid. Elevation is metres above sea level. Fold asymmetry, fold closure, and lithon texture are observed in diamond drill core (see cautionary note in text).

001051

