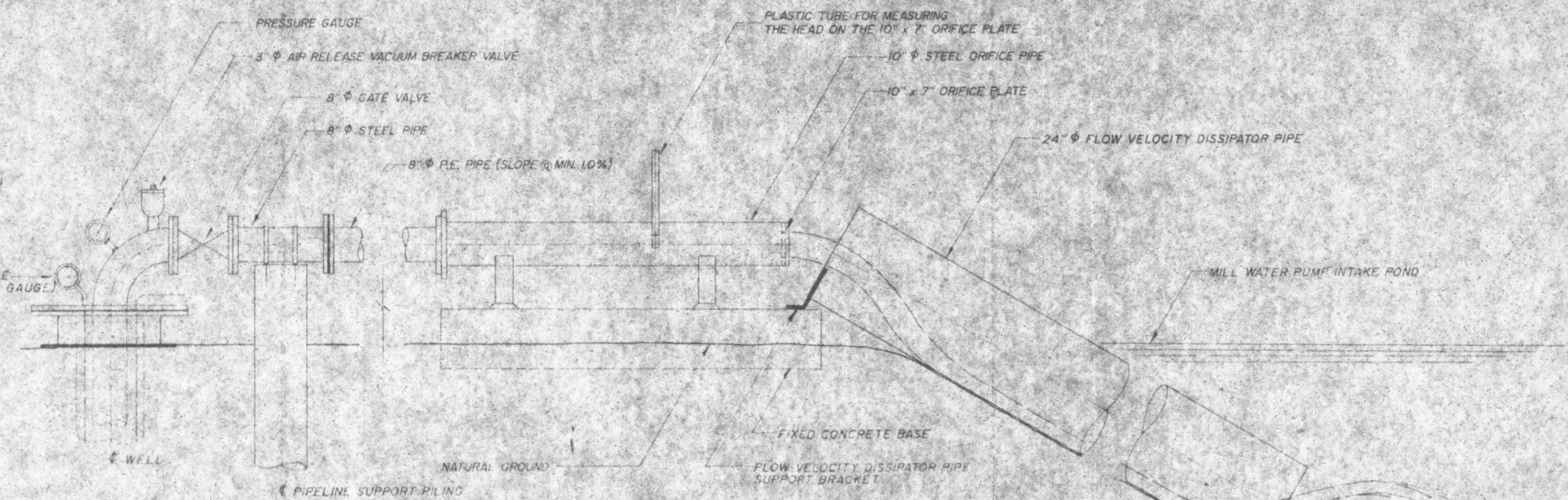


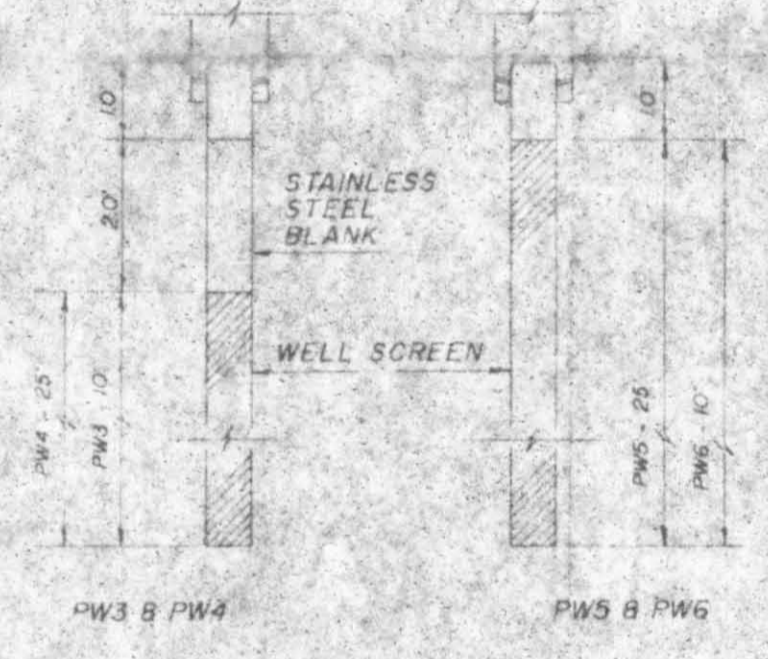
NOTE:
REFER TO INDUSTRIAL MACHINE & MFG.
DRAWING No. IG-3939 FOR DETAILS OF
WELL HEAD COMPLETION

PW3 & PW6 - 20 HP 3160/575 VOLTS
SUBMERSIBLE MOTORS TO PUMP 600 USGPM
PW4 - 60 HP 3160/575 VOLTS
SUBMERSIBLE MOTOR TO PUMP 1200 USGPM
PW5 - 50 HP 3160/575 VOLTS
SUBMERSIBLE MOTOR TO PUMP 1200 USGPM
BOTTOM OF SUBMERSIBLE PUMP
K-PACKER
14" O.D. STAINLESS STEEL WELL SCREEN
30 THOUSANDTHS SLOT OPENINGS
STAINLESS STEEL PLATE
BOTTOM OF 14" WELL SCREEN



NOTE:
PW4 - BOTTOM OF PUMP IS 59' BELOW WELL HEAD
COMPLETION 1 1/2" THICK FLANGES.
PW5 - BOTTOM OF PUMP IS 57' BELOW WELL
HEAD COMPLETION 1 1/2" THICK FLANGES.

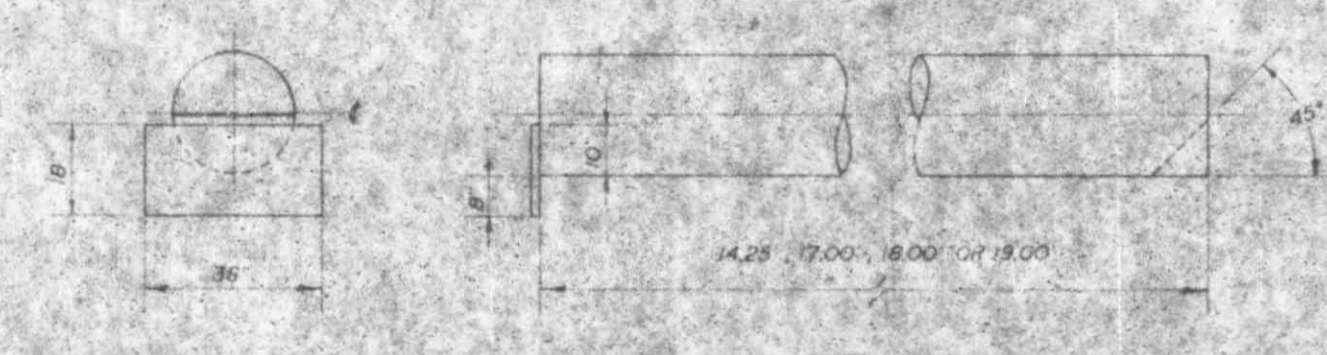
NOTE:
REFER TO DRAWING No. DB6-823
FOR PIPELINE LOCATIONS



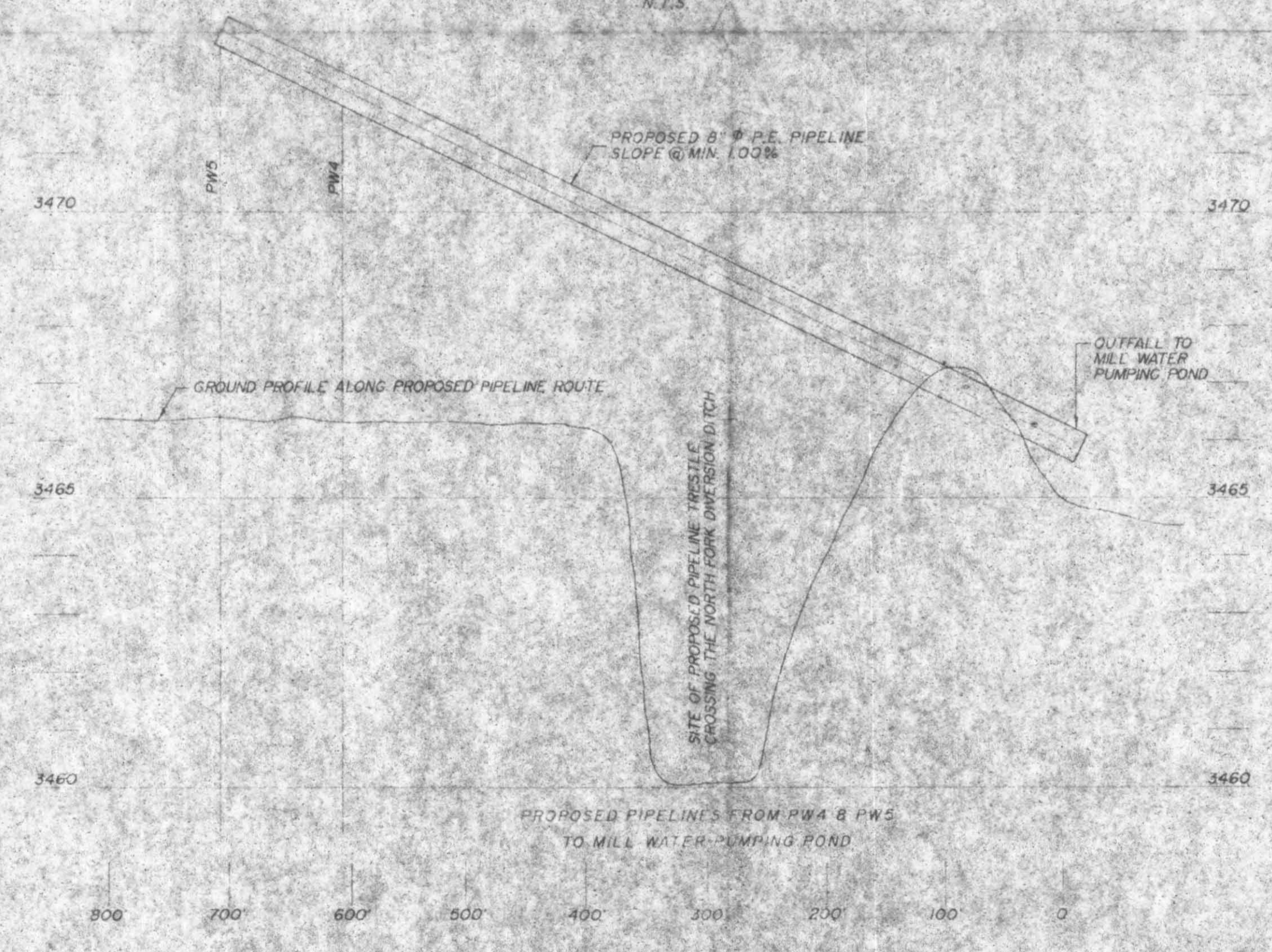
WELL SCREEN DETAIL
N.T.S.

PLEUGER SUBMERSIBLE PUMP MOTORS

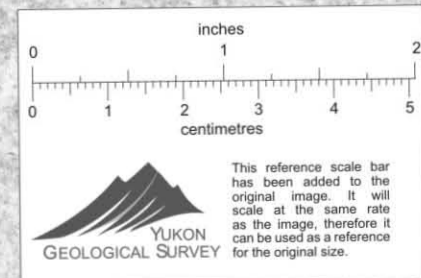
PW4	PW5
No. 1850/87	No. 1860076202
GAL./MIN. 1200 US	GAL./MIN. 1200 US
FEET - 125	FEET - 90
STAGES - 1	STAGES - 1A
VOLTS - 575	VOLTS - 575
HP - 60	HP - 60
CYCLES - 60	CYCLES - 60
AMPS - 62	AMPS - 62
KW - 45	KW - 37
R.P.M. - 3450	R.P.M. - 3450
CONN. - 3PH	CONN. - 3PH
DATE - 8/86	DATE - 8/86
MODEL No. QN 102-1 VNB-68	MODEL No. QN 102-1A



FLOW VELOCITY DISSIPATOR PIPE DETAIL
N.T.S.



PROFILE
N.T.S.



001144

MISCELLANEOUS
DETAILS

DATE: DEC 9, 1986 SCALE: AS SHOWN

International Water Supply, Ltd.

CURRAGH RESOURCES
FARO, YUKON
GROUNDWATER DEVELOPMENT PROGRAM

DRAWING No. DB6-822