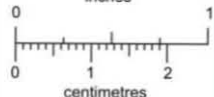


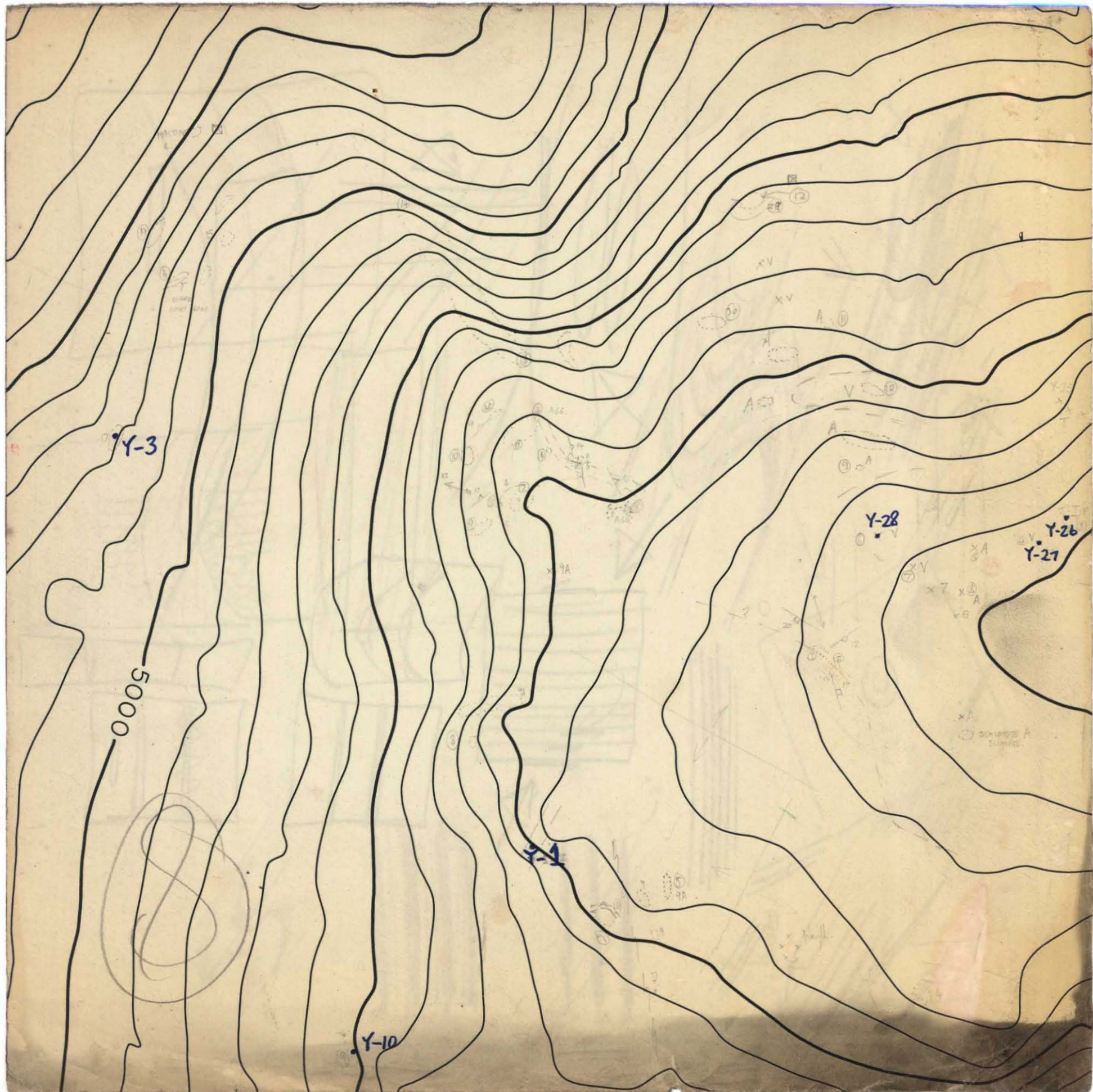
inches



centimetres

This reference scale bar has been added to the original image. It will scale at the same rate as the image, therefore it can be used as a reference for the original size.

001546





Y-II 5396 x 5399  
x

5268  
x

x 5294

Y-13 - S<sub>2</sub> IN TUFF  
x  
5315

Y-20  
4939  
x  
Y-21  
Y-22

II

x  
4609

x4560

x  
4665

Y-53  
(2)?  
RUSTY SERICITE  
SCHIST/PHYLLITE.

x4591

14

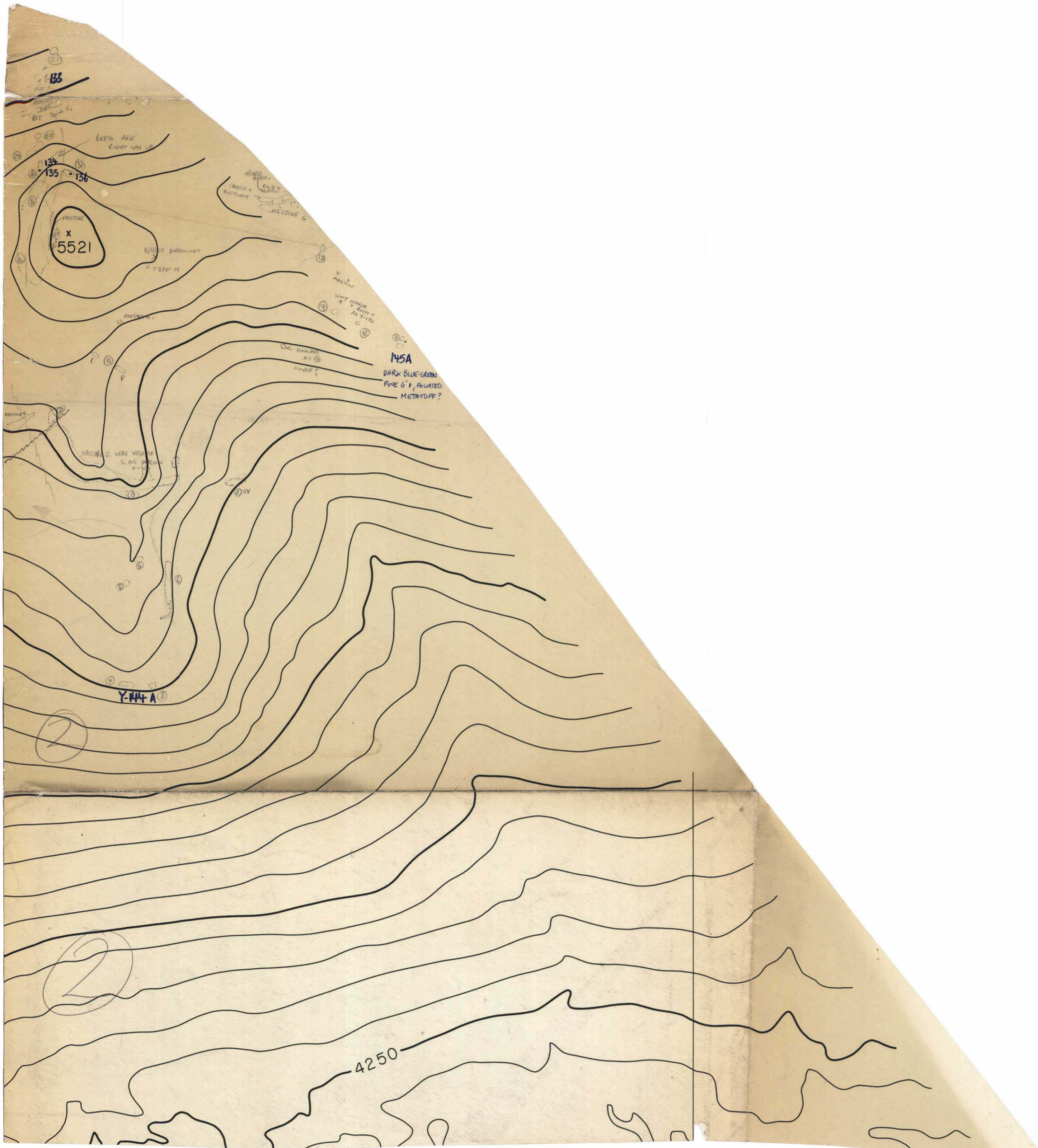
x4604

4680

4 PHLL  
3 CHL. RH  
2 ACT. GN  
1 MARB.

GASEOUS BLOCKY RUSTY  
MOT. LIMY, WGT  
PHYLLITE

GY. MATT.  
LIMY PHYLL.  
ETC. ROOFS ETC.  
LIMY  
GRAY PHYLL  
-91. 1ST



133

BEDS ARE RIGHT WAY UP

134  
135  
136

MASSIVE  
X  
5521

FeO<sub>2</sub> BARROWINGS  
X T BFP CC

ALONG  
CROSS-CUT  
MASSIVE G

X  
MASSIVE

LIMY CONCRETIONARY  
X  
AS T-132  
G

145A  
DARK BLUE-GREEN  
FINE G.P., FOLIATED  
METATUFF?

DE GRADATION  
A = 10  
MOVED?

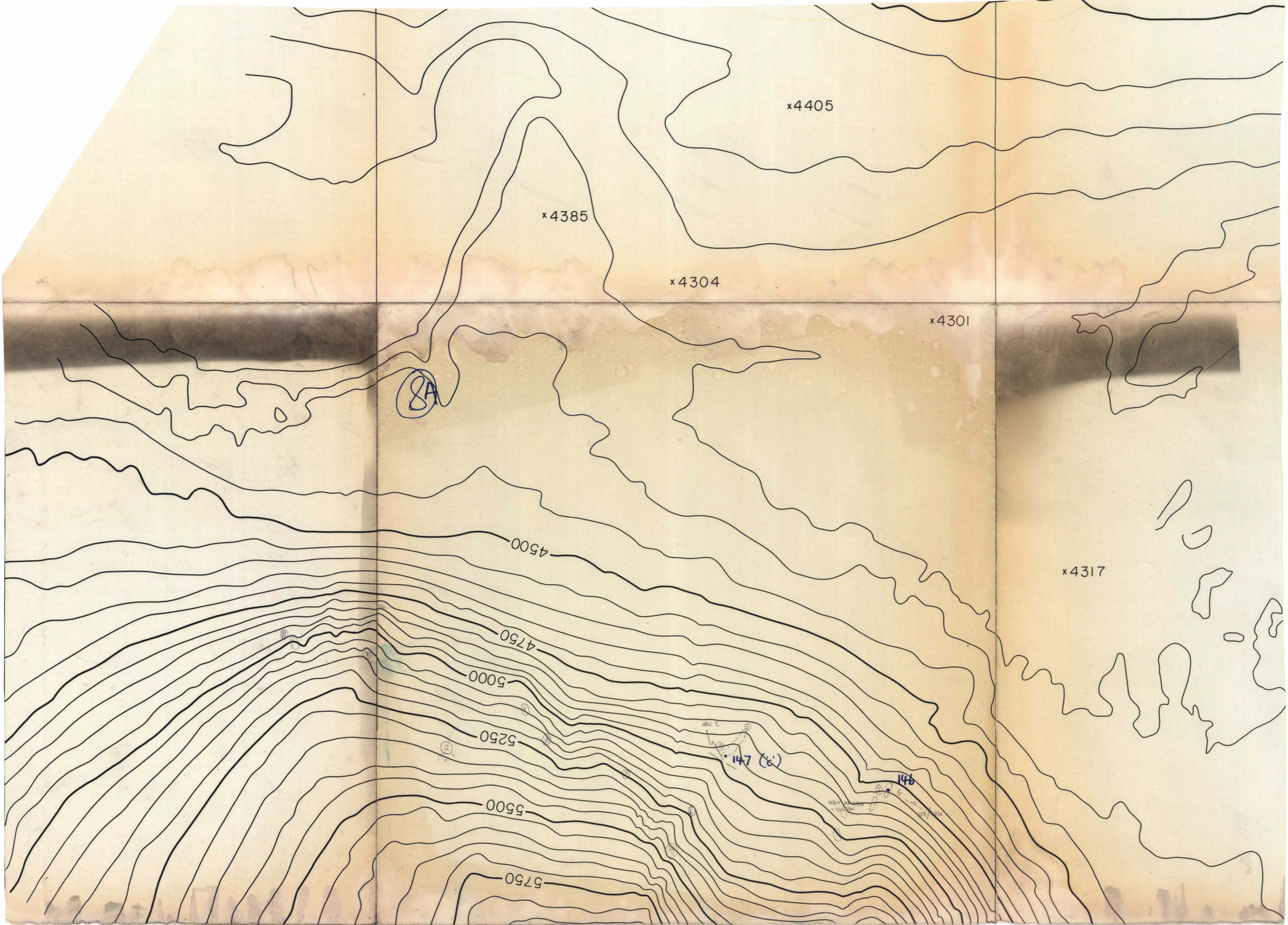
MASSIVE G. MARK VARIABLE  
S, AND PARALLEL  
N

Y-144A

4250







x4405

x4385

x4304

x4301

8A

x4317

4500

4750

5000

5250

5500

5750

147 (8)

146

5506  
x x Y-35

Y-36

Y-37  
Y-38, 39

Y-55?  
S<sub>4</sub> →

5720

USA - BLACK ROCK

Y-47

LIMY STRATIFERS IN CUT

LIMY P.

SW

x5820 Y-44, 43

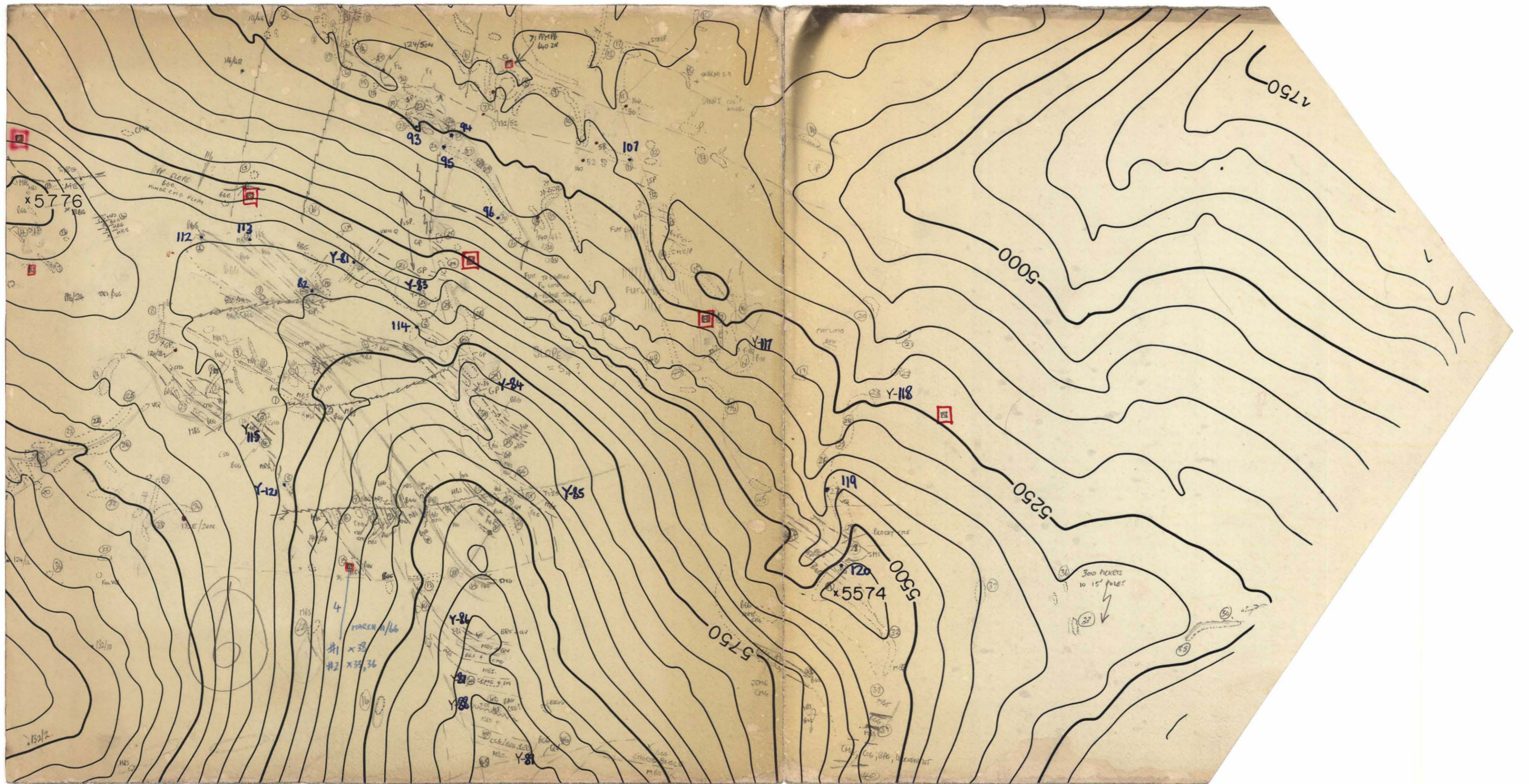
Y-41

Y-48

x5870

5750

13



x5776

MARCH 1/66  
#1 x 38  
#2 x 33, 36

x5574

300 PICKETS  
10 15' POLES

5750

5000

5250

5500

5750

112

113

114

115

119

93

94

95

96

98

99

107

108

109

110

111

Y-81

Y-82

Y-83

Y-84

Y-85

Y-86

Y-87

Y-88

Y-118

Y-121

Y-115

Y-117

Y-119

MP CLOVE

600

MINOR CLOVE FLAT

SLOPE = 5%

Block ms

SM

CH

MS

MS

MS

MS

MS

MS

MS

MS

MS

MS

MS

MS

MS

116

117

118

119

120

121

122

123

124

125

126

127

128

129

130

131

132

133

134

135

136

137

138

139

140

141

142

143

144

145

146

147

148

149

150

151

152

153

154

155

156

157

158

159

160

161

162

163

164

165

166

167

168

169

170

171

172

173

174

175

176

177

178

179

180

181

182

183

184

185

186

187

188

189

190

191

192

193

194

195

196

197

198

199

200

201

202

203

204

205

206

207

208

209

210

211

212

213

214

215

216

217

218

219

220

221

222

223

224

225

226

227

228

229

230

231

232

233

234

235

236

237

238

239

240

241

242

243

244

245

246

247

248

249

250

251

252

253

254

255

256

257

258

259

260

261

262

263

264

265

266

267

268

269

270

271

272

273

274

275

276

277

278

279

280

281

282

283

284

285

286

287

288

289

290

291

292

293

294

295

296

297

298

299

300

301

302

303

304

305

306

307

308

309

310

311

312

313

314

315

316

317

318

319

320

321

322

323

324

325

326

327

328

329

330

331

332

333

334

335

336

337

338

339

340

341

342

343

344

345

346

347

348

349

350

351

352

353

354

355

356

357

358

359

360

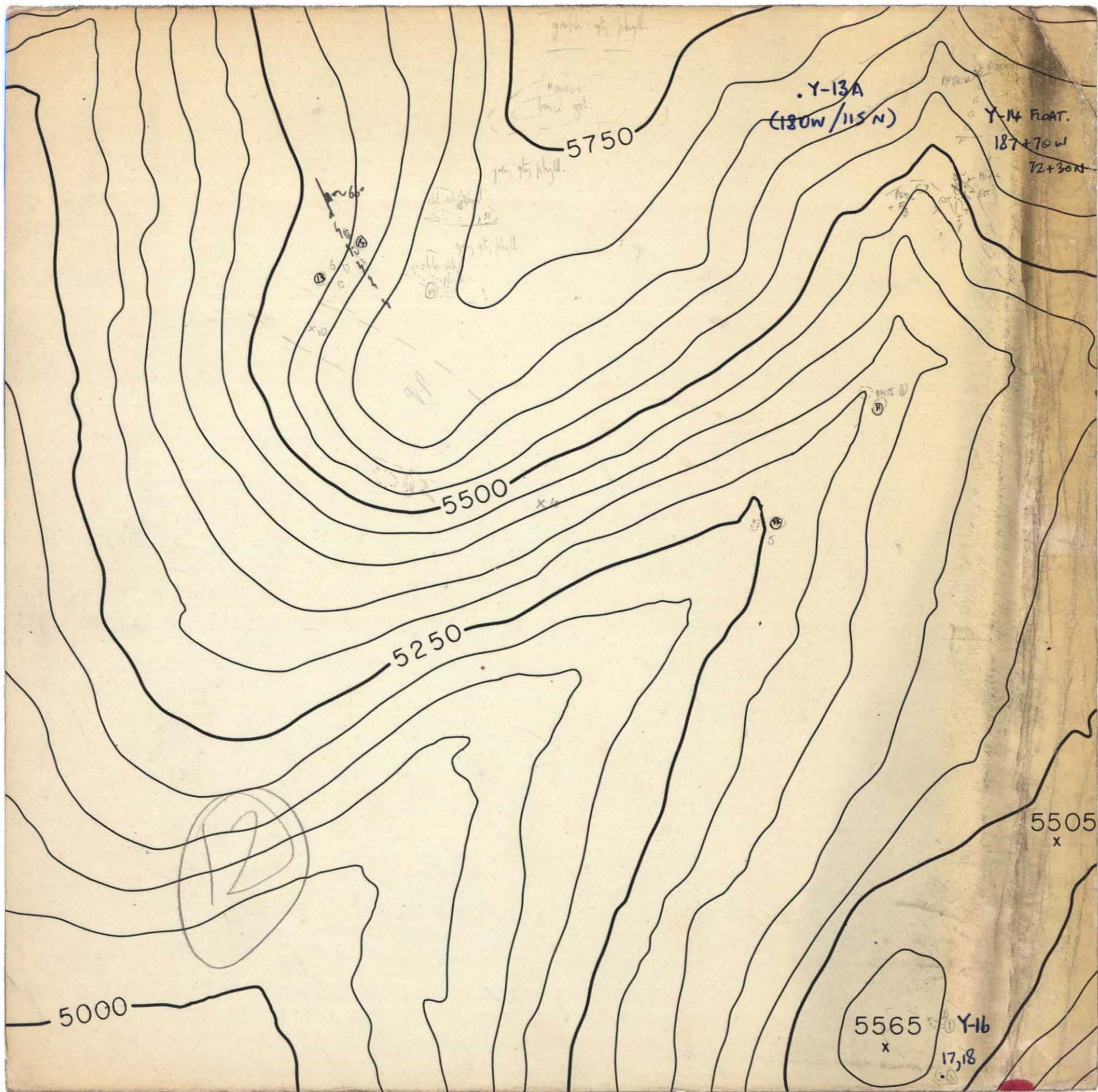
361

362

363

364

365



x  
4120

x4105

x  
4280

4

x  
5222

x5179



