

L001

0 - MST IS VERY QUARTZ RICH + MASSIVE - FOLIATION IS NOT A PROMINENT PLANAR WEAKNESS + MAY BE FOLDED. ROCK APPARENTLY HORNFELSED.

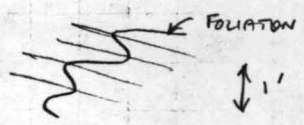
5-8 - QTZ DIORITE DYKE - 140/80 W TREND - CONTACTS IRREGULAR IN DETAIL.

ROCK IS OFTEN TRUE QUARTZITE, FOLIATION MEASURED IS S<sub>1</sub> WHICH IS FOLDED ABOUT FLAT AXIAL PLANES E.G. AT 40.

60 ROCK IS A BANDED BIOTITE <sup>QTZOSE-</sup> GNEISS - V. BLOCKY, HARD, S<sub>1</sub> FOLDED  
74 FOLIATION FOLDED

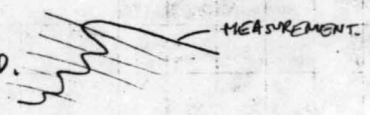
L003 51

LARGE FOLDS P<sub>2</sub>



79

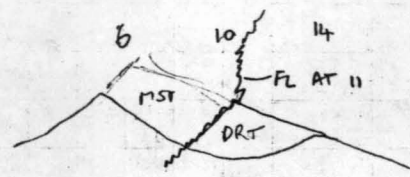
FN MEASUREMENT V LOCAL. FOLIATION STRONGLY FOLDED.



L012 9-14

BLIND DIORITE DYKE

PROBABLY CONTINUOUS FROM DYKE ON 4030



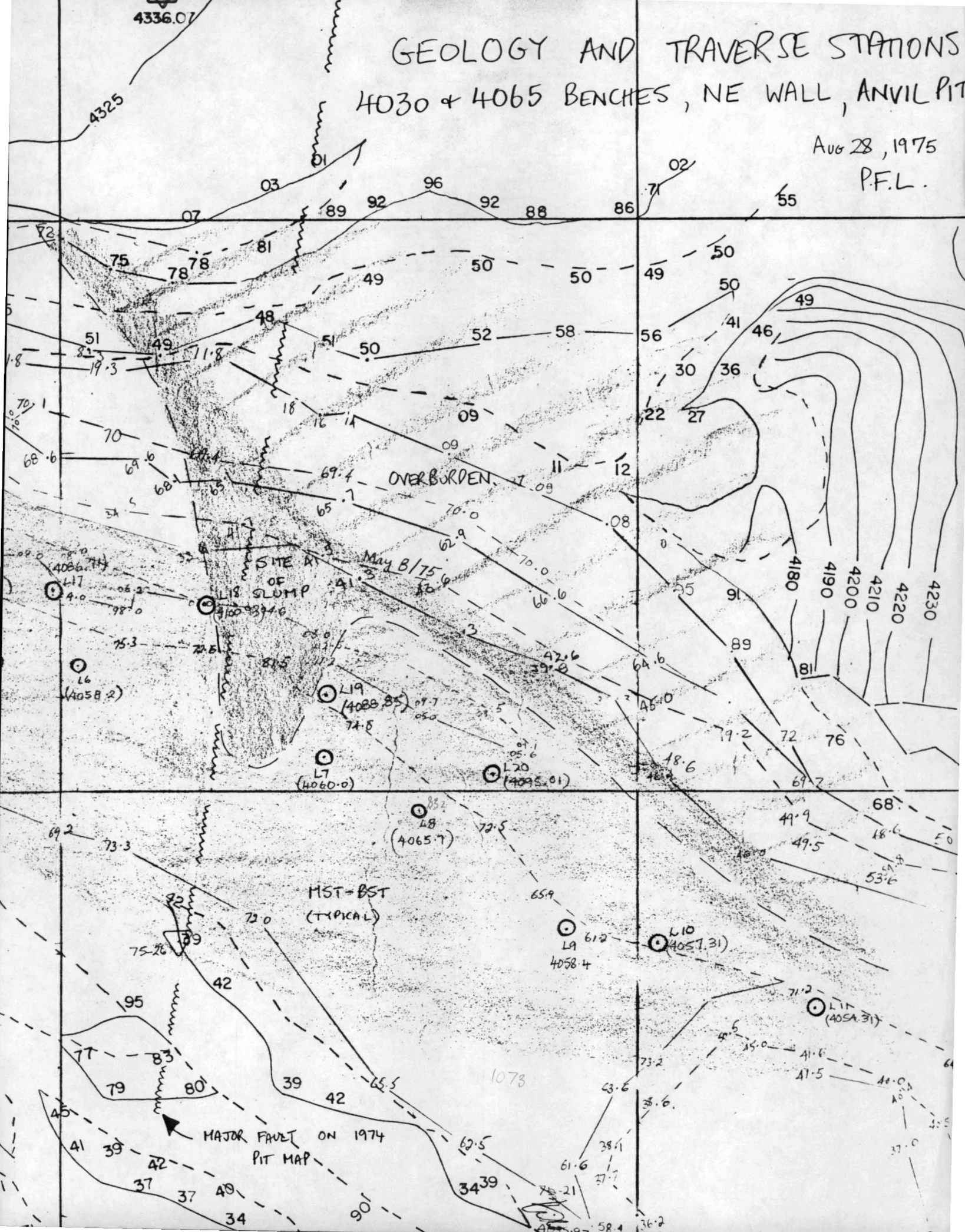
L013

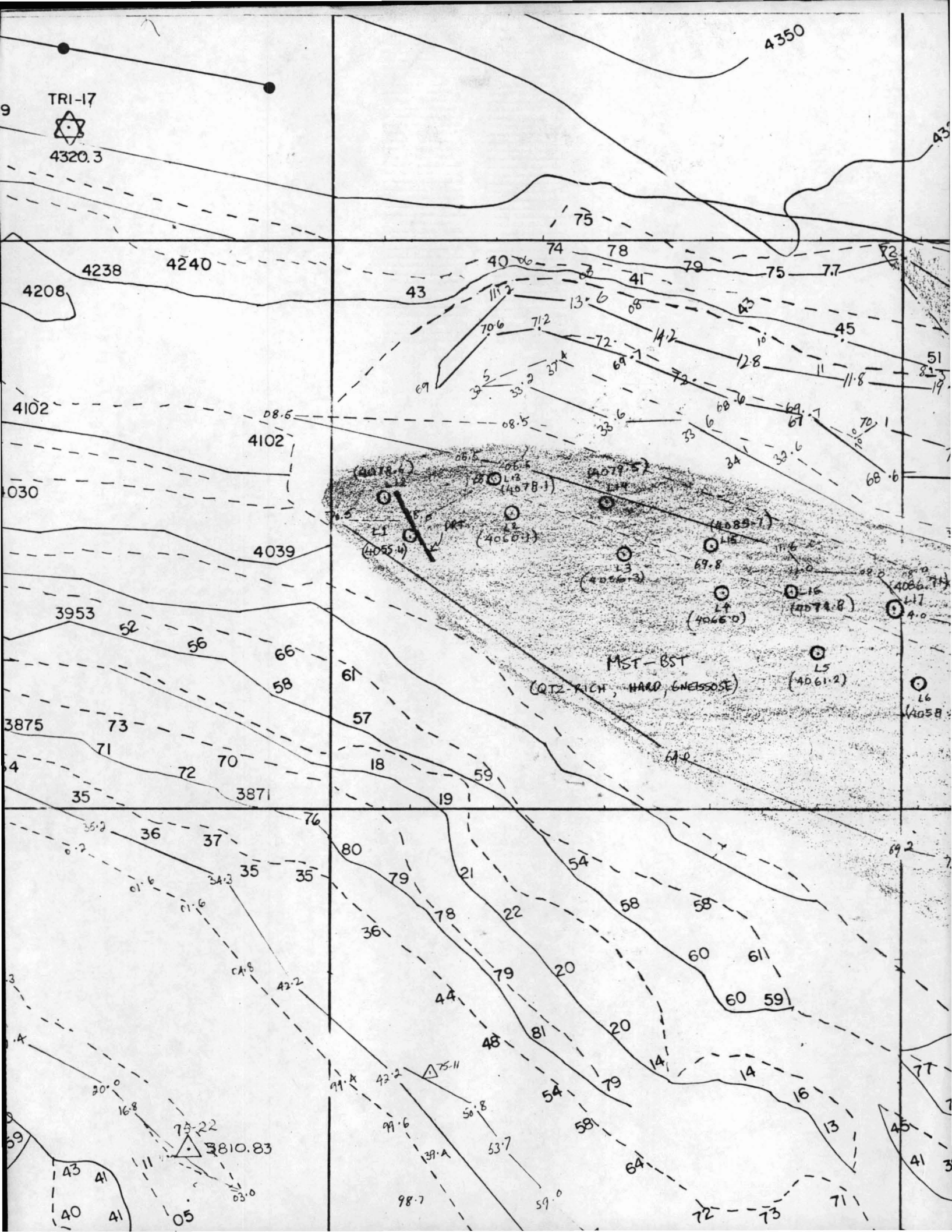
20-30 NO TENDENCY FOR ROCK TO CRACK ALONG BANDING - NO FN MSMT POSSIBLE

70-90 FN SUB-HORIZ, UNDULATORY + FOLDED

# GEOLOGY AND TRAVERSE STATIONS 4030 + 4065 BENCHES, NE WALL, ANVIL PIT

AUG 28, 1975  
P.F.L.





TRI-17



4320.3

4350

4238

4240

4208

43

75

74

78

79

75

77

72

4102

4102

40

70.6

71.2

13.6

68

72

12.8

11

11.8

51

81

19

4030

4039

08.5

08.5

33.6

33.6

34

33.6

69.7

70.1

70.1

68.6

(4078.4)

(4078.1)

(4079.5)

(4089.7)

(4086.7)

(4074.8)

(4061.2)

(4058)

L1

L2

L3

L4

L5

L6

L7

L8

L9

L10

L11

L12

L13

L14

L15

L16

L17

L18

L19

L20

3953

52

56

66

61

57

61

18

19

59

61.0

3875

73

70

72

70

76

80

79

21

22

54

58

58

60

61

60

59

69.2

35

36

37

35

35

36

36

78

79

20

58

60

61

60

59

4

35

36

37

35

35

36

36

78

79

20

58

60

61

60

59

3

30.0

16.8

75.22

3810.83

63.0

43

41

40

41

05

91.8

42.2

91.6

50.8

53.7

54

58

79

14

14

16

13

45

41

3

98.7

59.0

72

73

71



# STRUCTURAL LOG

DEPTH	LOG	ROCK	S <sub>1</sub>	S <sub>2</sub>	S <sub>N</sub>	F <sub>2</sub> ETC	DEPTH	LOG	ROCK	S <sub>1</sub>	S <sub>2</sub>	S <sub>N</sub>	F <sub>2</sub> ETC	DEPTH	LOG	ROCK	S <sub>1</sub>	S <sub>2</sub>	S <sub>N</sub>	F <sub>2</sub> ETC	ME
200							240							280		MST	F	N			S <sub>1</sub> IS NOT A FRACTURE SURFACE
210		FOLIATED QTZITE ORE - FOLIATION WEAK	25				250							290							
220			0				260							300							
230		MST (QTZOSE)	50				270														

MC

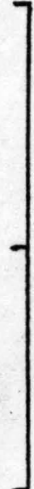
EDH

A LOT OF  
FOLDED S<sub>1</sub> -  
S<sub>2</sub> NOT  
VERT PERSASIVE

**KEY:** ? - IRREGULAR ; F - FOLDED ;  
 F? - FOLDED? ; N - NONE ;  
 BC - BROKEN ; MC - MISSING CORE  
 DOM - DOMINANT ; PERSV - PERSASIVE

**NOTES** 200-255 SPLIT.

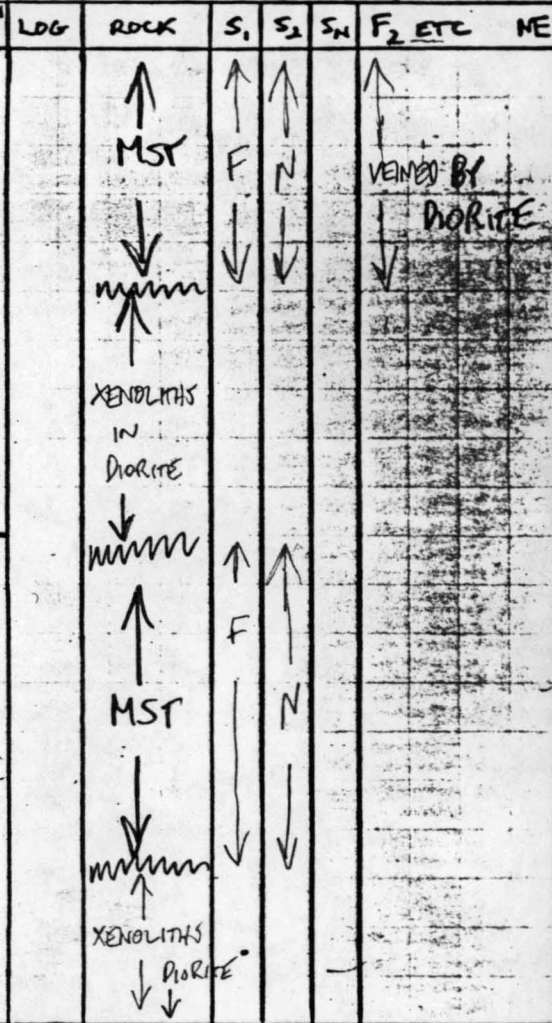
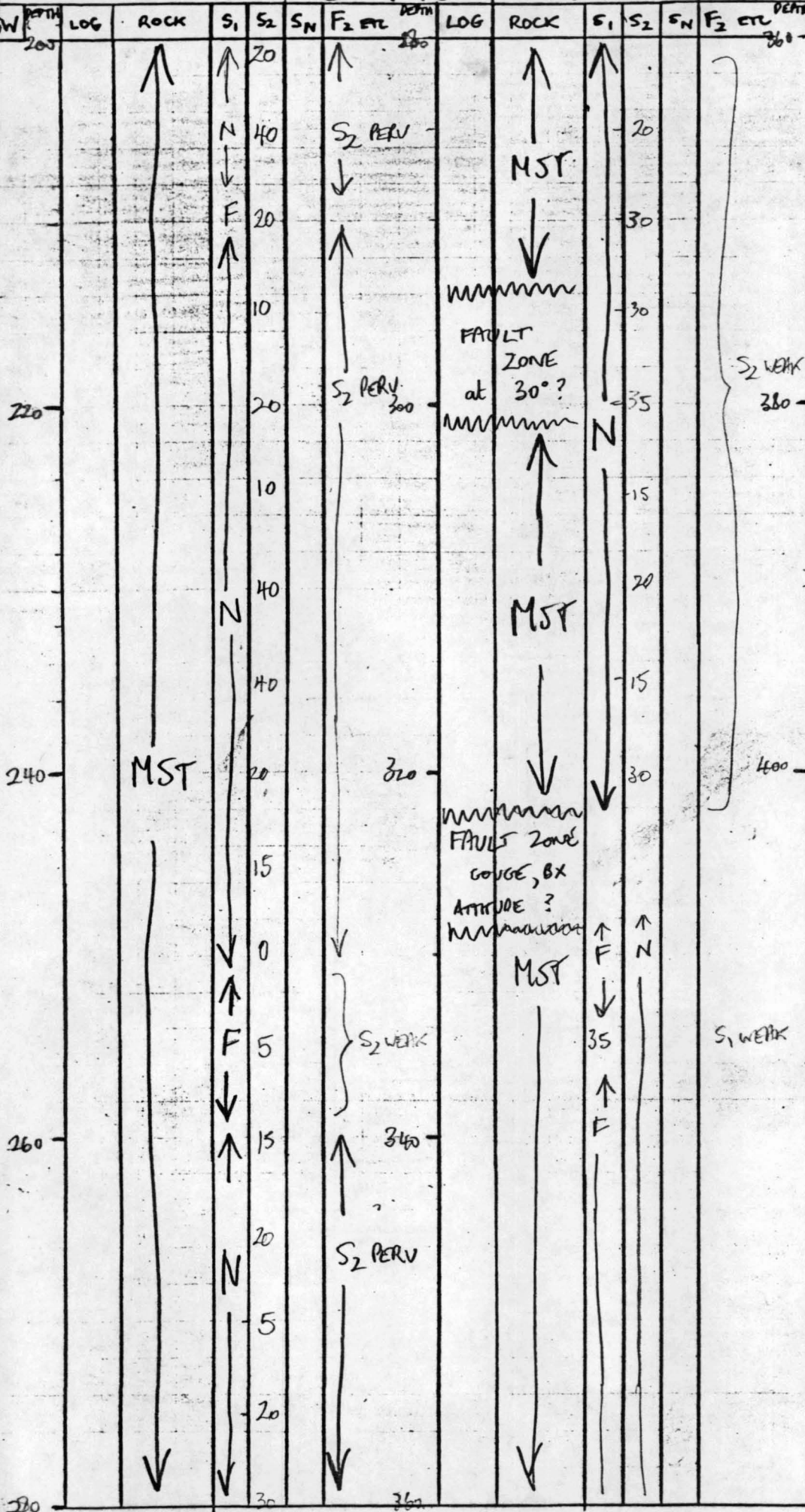
**SUMMARY**







# STRUCTURAL LOG



KEY: ? - IRREGULAR ; F - FOLDED  
 F? - FOLDED? ; N - NONE ;  
 BC - BROKEN ; MC - MISSING CORE  
 DOM - DOMINANT ; PERV - PERSASIVE

NOTES

SUMMARY

LOOKING NORTHWEST  
DDH: 66-88

# STRUCTURAL LOG

FOOTAGE: 1 200 TO 300

DEPTH	LOG	ROCK	S <sub>1</sub>	S <sub>2</sub>	S <sub>N</sub>	F <sub>2</sub> ETC	DEPTH	LOG	ROCK	S <sub>1</sub>	S <sub>2</sub>	S <sub>N</sub>	F <sub>2</sub> ETC	DEPTH	LOG	ROCK	S <sub>1</sub>	S <sub>2</sub>	S <sub>N</sub>	F <sub>2</sub> ETC	NE
200		MSD INTERBANDED PERMINENT FACIES + SILIC FACIES ORES					240		↑ F ↓						MSD PY+SLICA ↑ DRT	N	N				
		↑ QTZ ↓	F	N			260		↑ MST AS ABOVE ↓												
		↑ MST ↓					280		↑ BANDING G.B. GNEISSOSE GRENICH, BIOTITE- BERKING G.B.												
		↑ MST ↓					290		↑ MST ↓												
		↑ MST ↓					300		↑ MST ↓												

**KEY:** ? - IRREGULAR; F - FOLDED  
F? - FOLDED?; N - NONE;  
BC - BROKEN; MC - MISSING CORE  
DOM - DOMINANT; PERV - PERSVASIVE

**NOTES** EOH AT 442.  
IN DRT.

**SUMMARY**

S<sub>1</sub> BANDING IS NOT A COMMON FRACTURE SURFACE.

LOOKING NORTHWEST  
DDH: 66-39

# STRUCTURAL LOG

FOOTAGE: 100 TO 500

DEPTH	LOG	ROCK	S <sub>1</sub>	S <sub>2</sub>	S <sub>N</sub>	F <sub>2</sub> ETC	DEPTH	LOG	ROCK	S <sub>1</sub>	S <sub>2</sub>	S <sub>N</sub>	F <sub>2</sub> ETC	DEPTH
100		O/B					260							420
		↑ MC ↓							MSP	F ↑ ? ↓ F				
120		MSD	F	N			280							440
			22											
			28											
			33						QTZ	40	38			
			18				300				30			
			20							↑	42			460
			30							F	40			MAPPED IN PT 135/335
										↓	35			S <sub>1</sub> DOM.
									MST		48			
160		MST					320				35			480
			25								35			
			40						MSD	F	10	N		
			55						MST		30			
			50				340			↑	30			
180			60							↑				500
			50						MST	F		N		
			50							↓				
200			40				360			↓				
											20			
											45			
220							380			↑	55			
		MSD	?	N					MST		40			
240							400				50			
										F				
											40-50			
260							420							

LOG	ROCK	S <sub>1</sub>	S <sub>2</sub>	S <sub>N</sub>	F <sub>2</sub> ETC	NE
		↑	↑			
	MST					S <sub>1</sub> DOM
		F	40-50			
		↓	↓			
						EDH

**KEY:** ? - IRREGULAR ; F - FOLDED ;  
 F? - FOLDED? ; N - NONE ;  
 BC - BROKEN ; MC - MISSING CORE  
 DOM - DOMINANT ; PERV - PERSVATIVE

NOTES

SUMMARY

[Empty box for summary notes]

