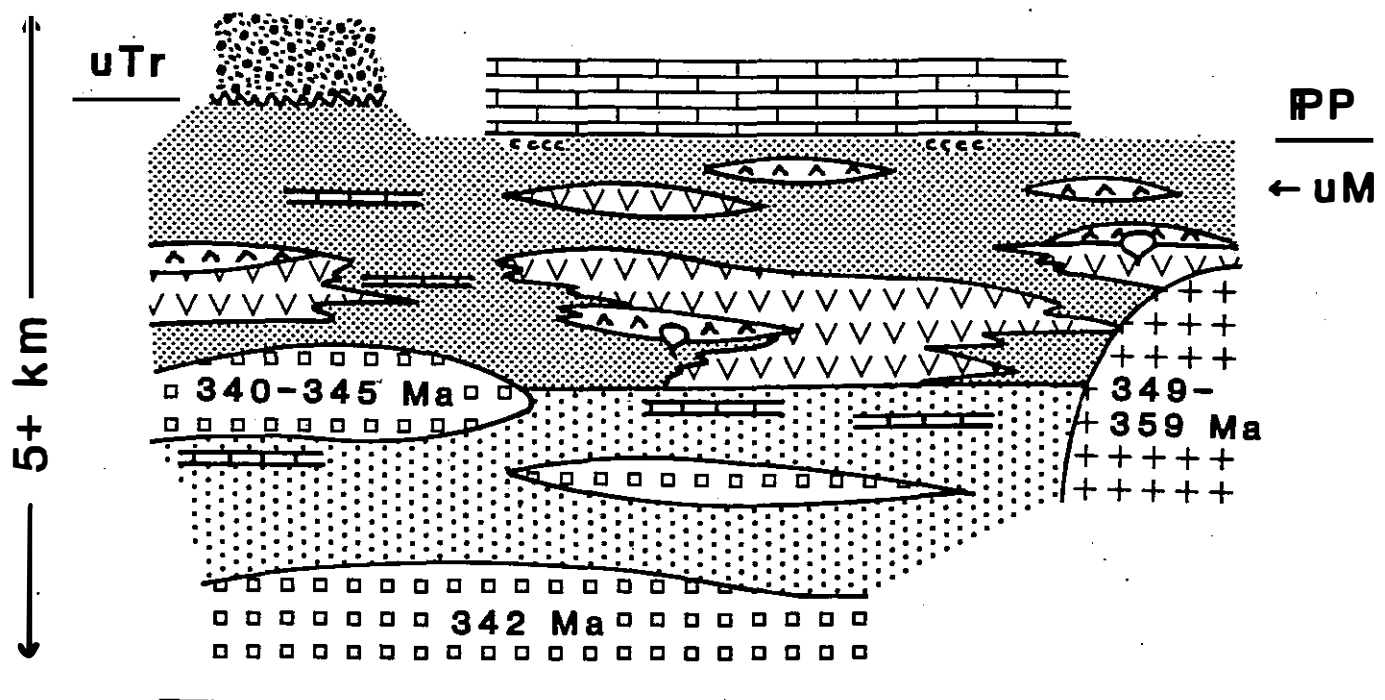
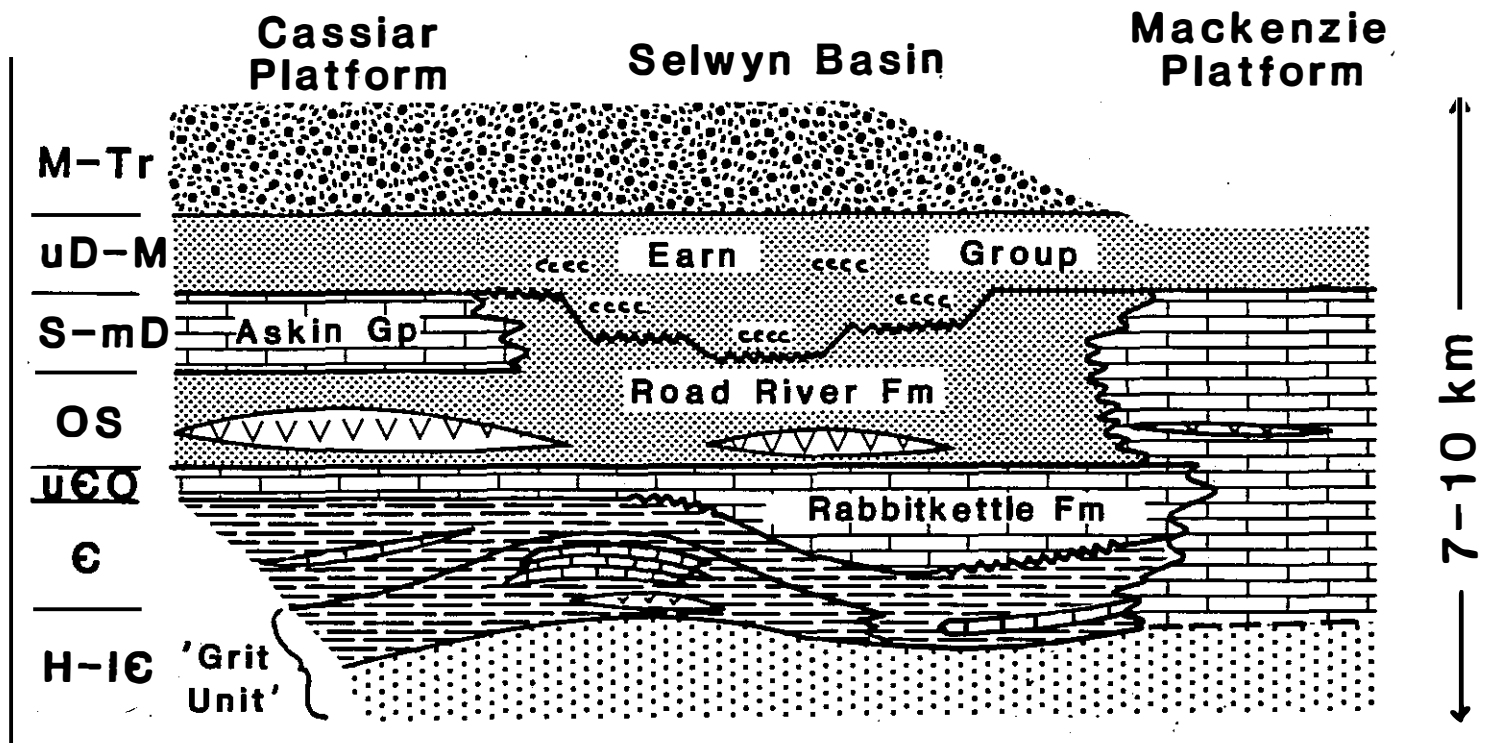
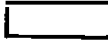
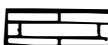
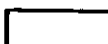







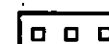
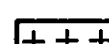

YUKON-TANANA TERRANE



NORTH AMERICA



-  immature clastic sediments
-  carbonate and silty carbonate
-  carbonaceous siltstone and shale
-  chert pebble conglomerate
-  felsic metavolcanic rocks
-  mafic metavolcanic rocks

-  pelitic sediments
-  quartz-rich clastic rocks
-  monzonitic and granitic orthogneiss
-  quartz monzonitic and quartz dioritic orthogneiss
-  unconformable contact