

LIST OF MAPS

1. Faro Daily Map
2. Faro Pit Internal Ramps
3. Faro Ultimate Pit Limits
4. Faro Underground
5. Vangorda Plateau Site Plan
6. Vangorda Pit Design
7. Grum Pit Stage 1 Design
8. Grum Pit Stage 2 Design
9. Grum Pit Stage 3 Design
10. Vangorda Pre-stripping 1988
11. Grum Pre-stripping 1988

1987

001911

PLAN-17 NOVEMBER

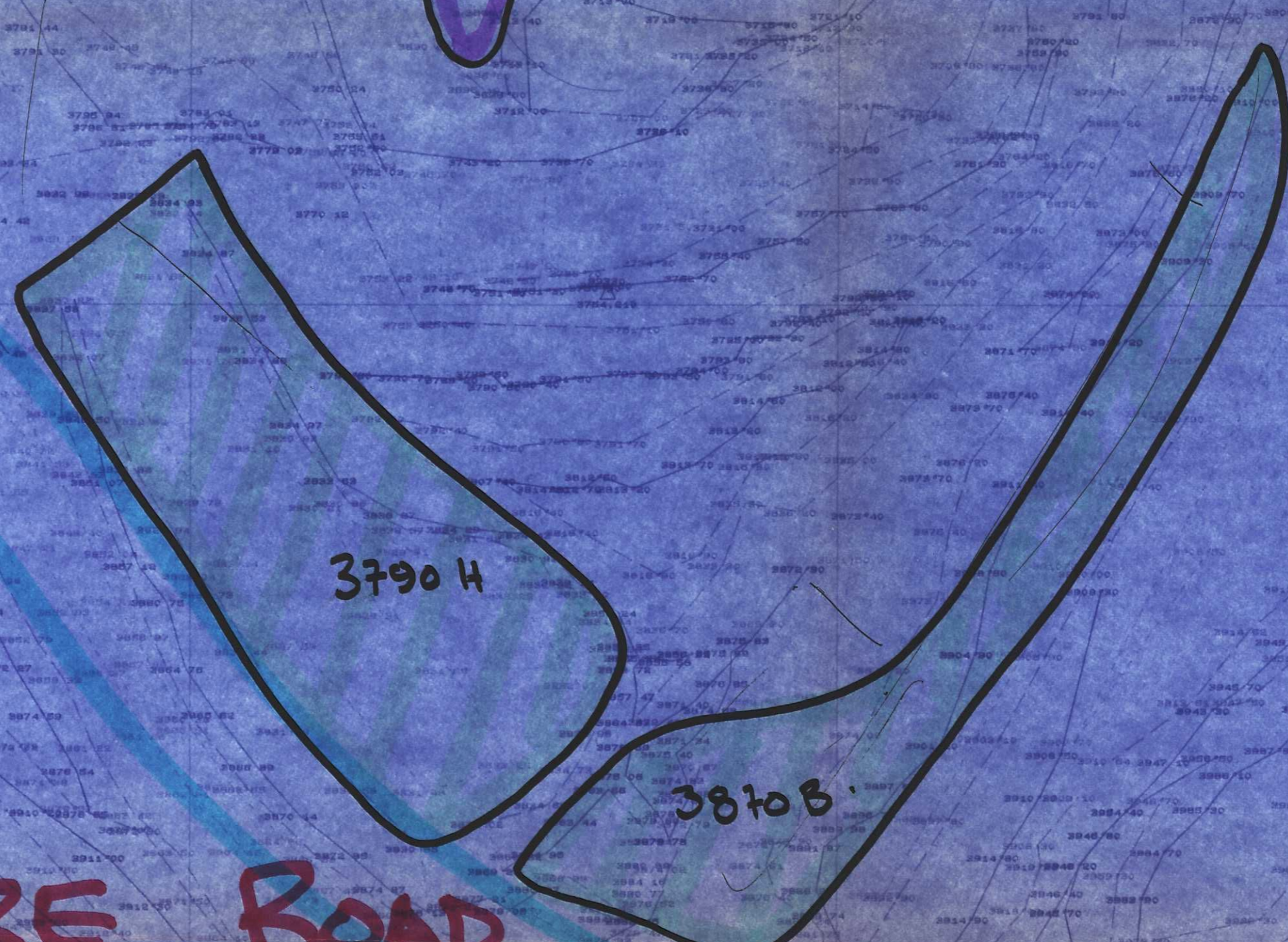
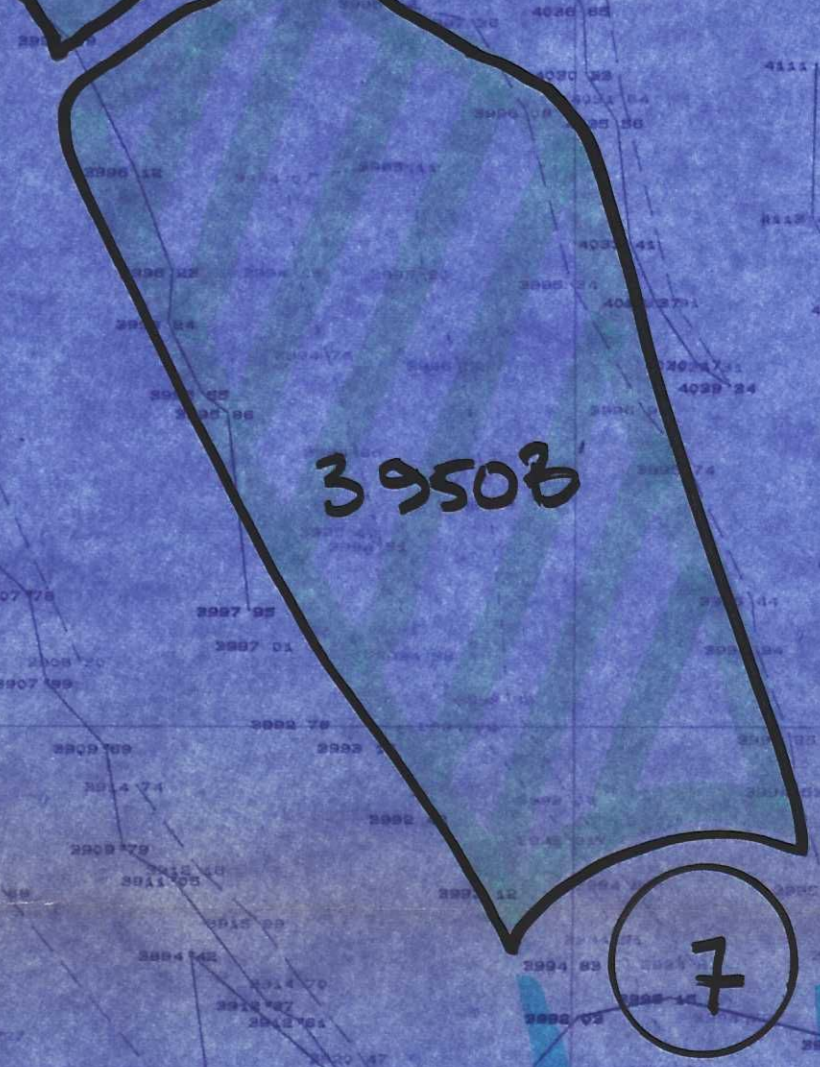
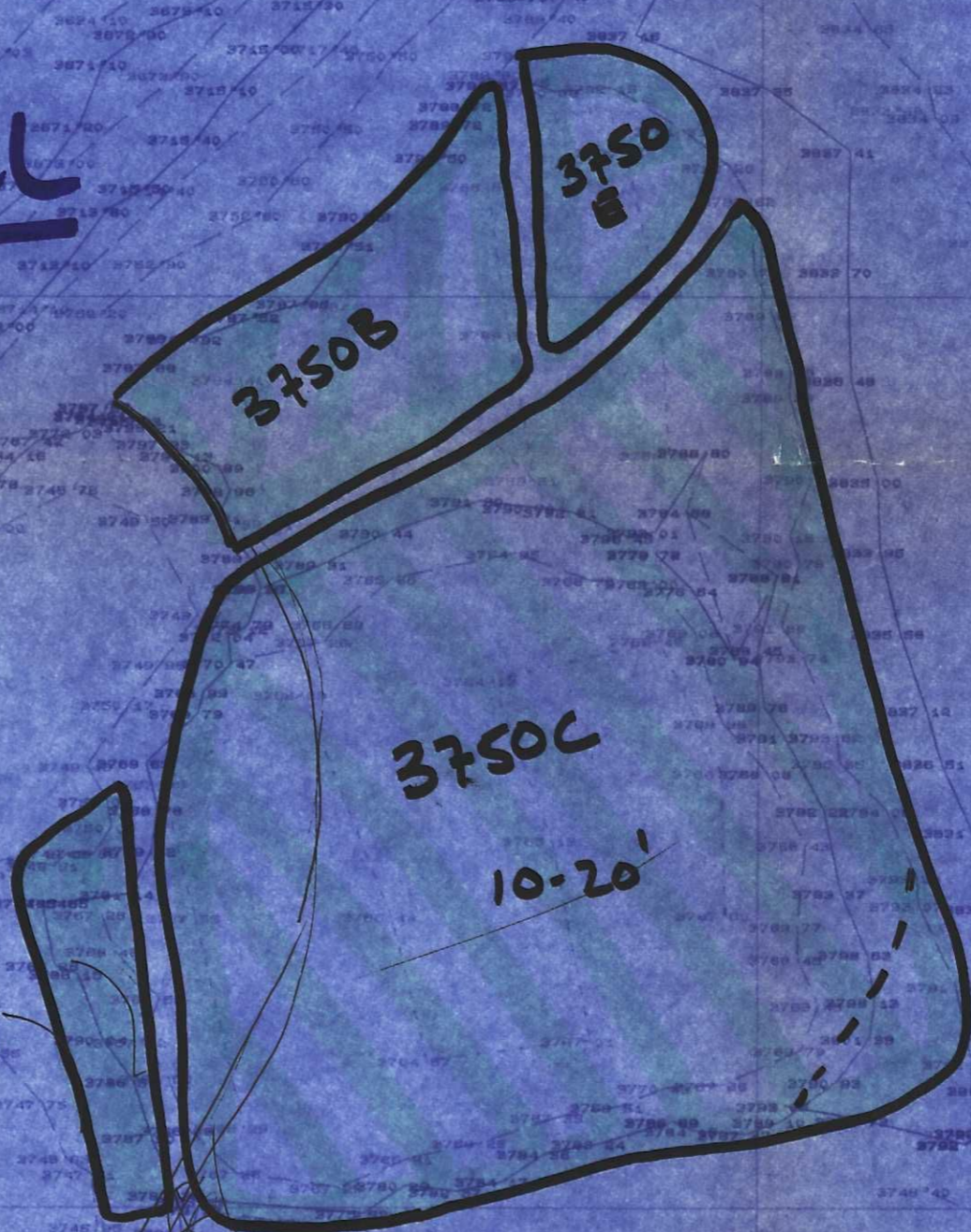
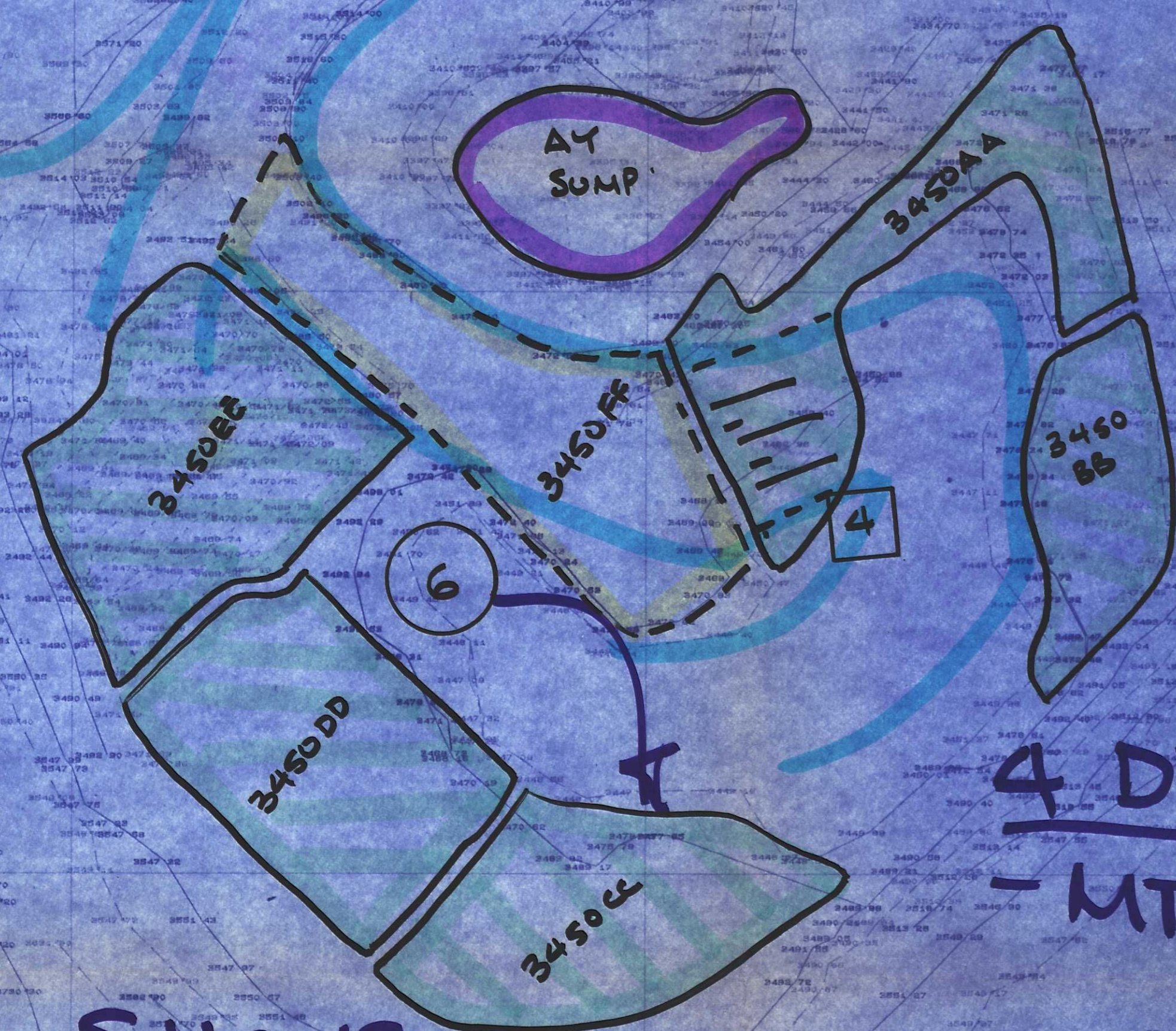
* OPERATE SAFELY *

No BLAST
TODAY

MAIN
SUMP

AY
SUMP

JB
SUMP



6 SHOVEL
- 3450 DD
- 28,000 ±

8 SHOVEL
STBY

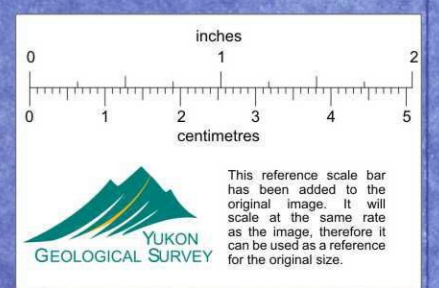
7 SHOVEL
- 3950B
- 30,000 ±

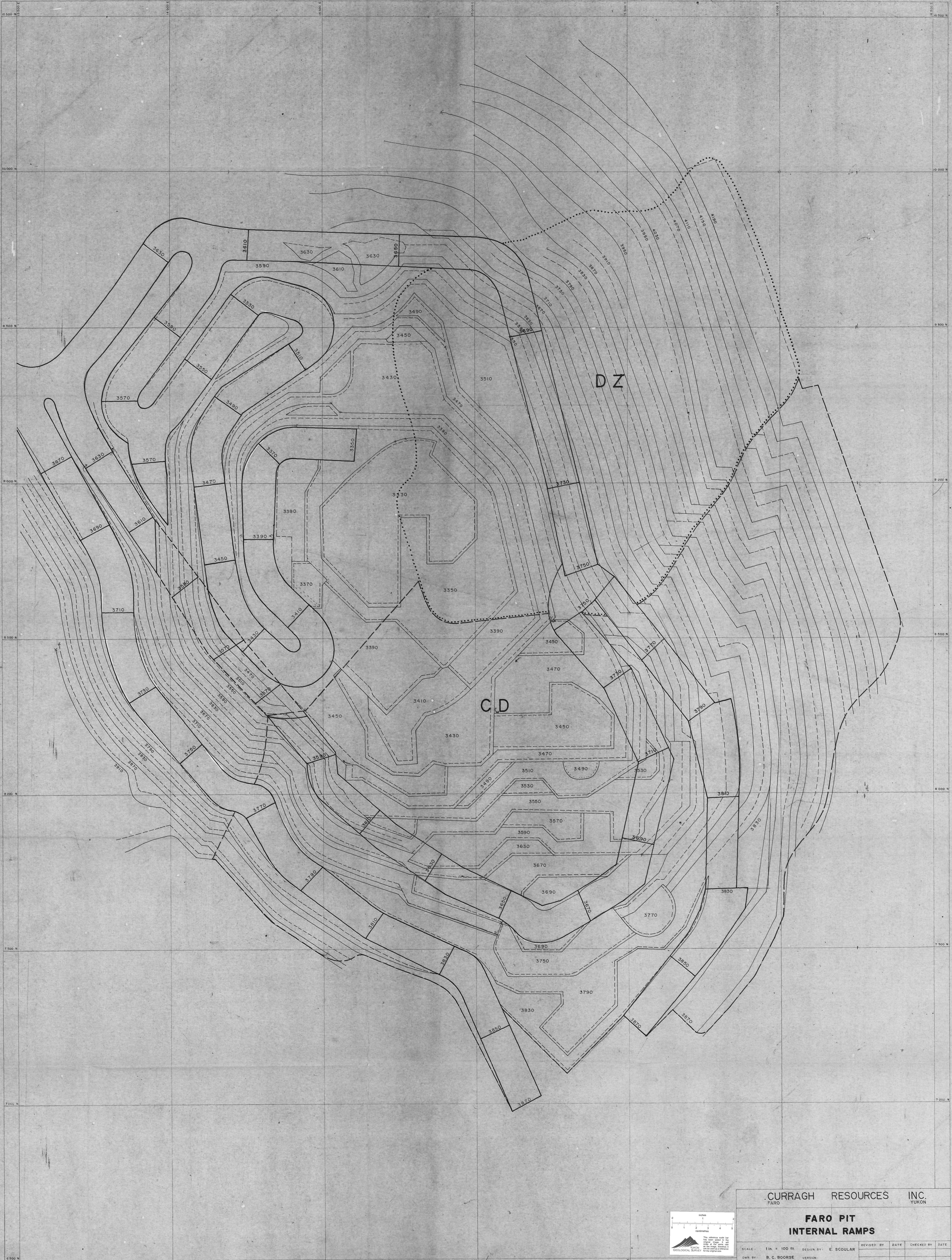
6 DRILL
- STBY

BLASTERS

- BOULDERS
- SHOOT BOULDERS
- & 3450EE TOMORROW

* * PREPARE ROAD
FROM ⑧ TO END
OF HAULWAY FOR
⑧ STARTING TOMORROW
MORNING * *



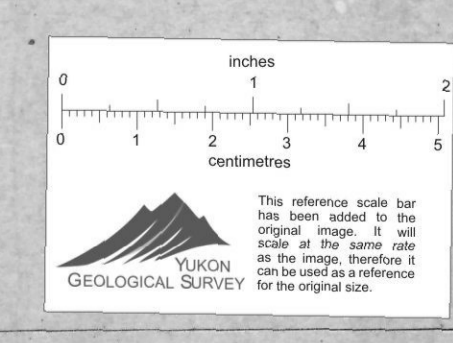


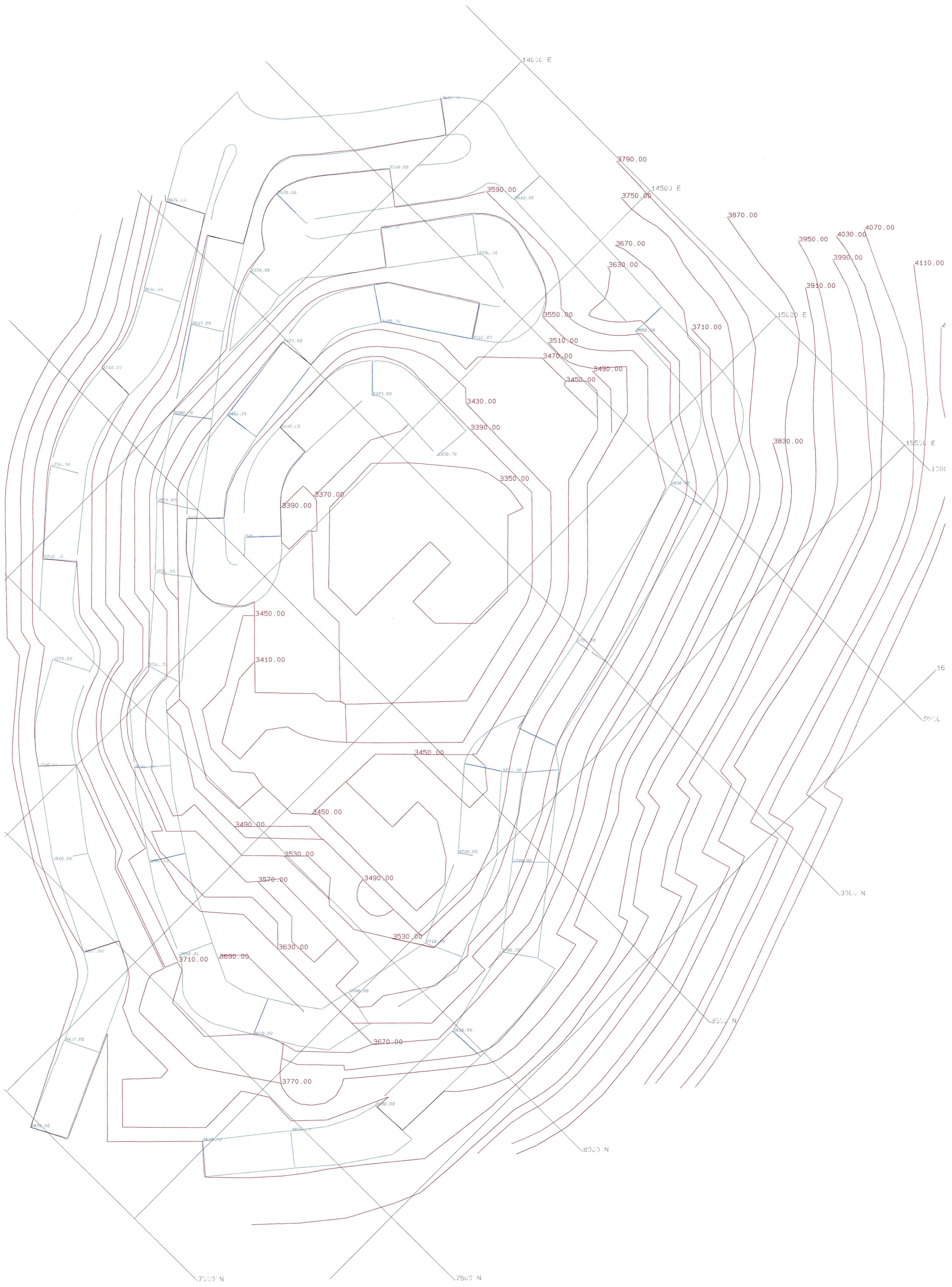
CURRAGH RESOURCES INC.
 FARO YUKON

**FARO PIT
 INTERNAL RAMP**

SCALE: 1 in. = 100 ft. DESIGN BY: E. SCULAR
 OWN. BY: B. C. BOORSE VERSION:
 DATE: MAY 10, 1988 FILE:

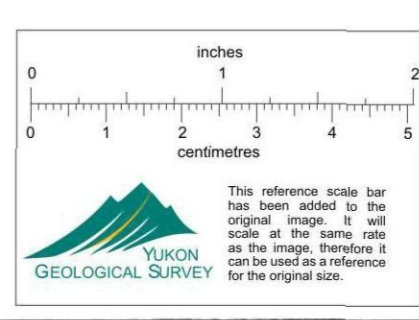
| REVISED BY | DATE | CHECKED BY | DATE |
|------------|------|------------|------|
| | | | |
| | | | |
| | | | |



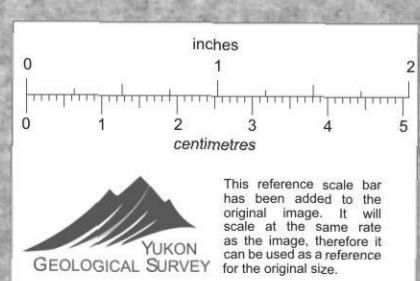


PC-MINE VERSION 1.10

FARO ULTIMATE PIT
INTERNAL RAMP



24/11/1988 SCALE 1: 1200



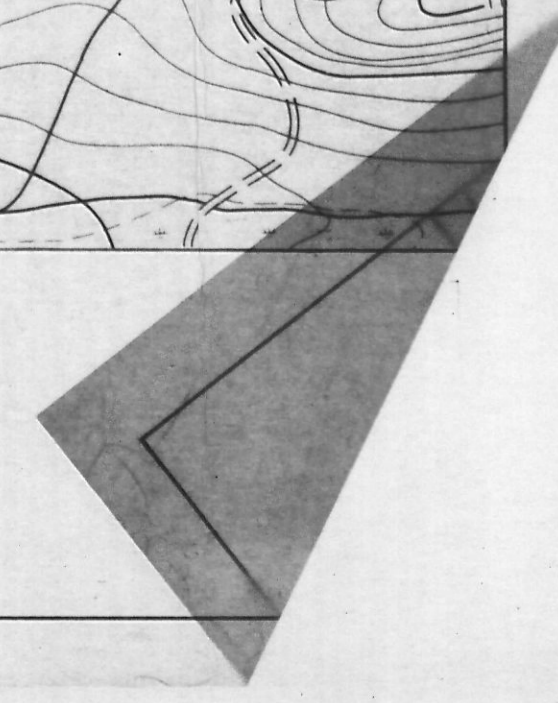
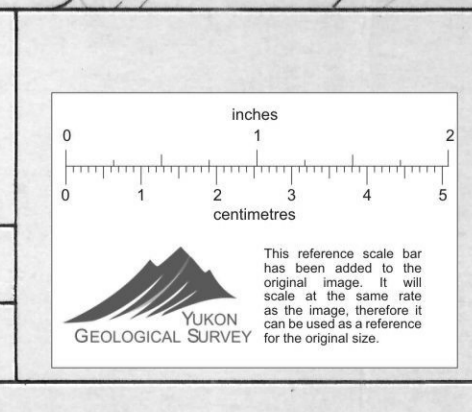
Faro Underground.

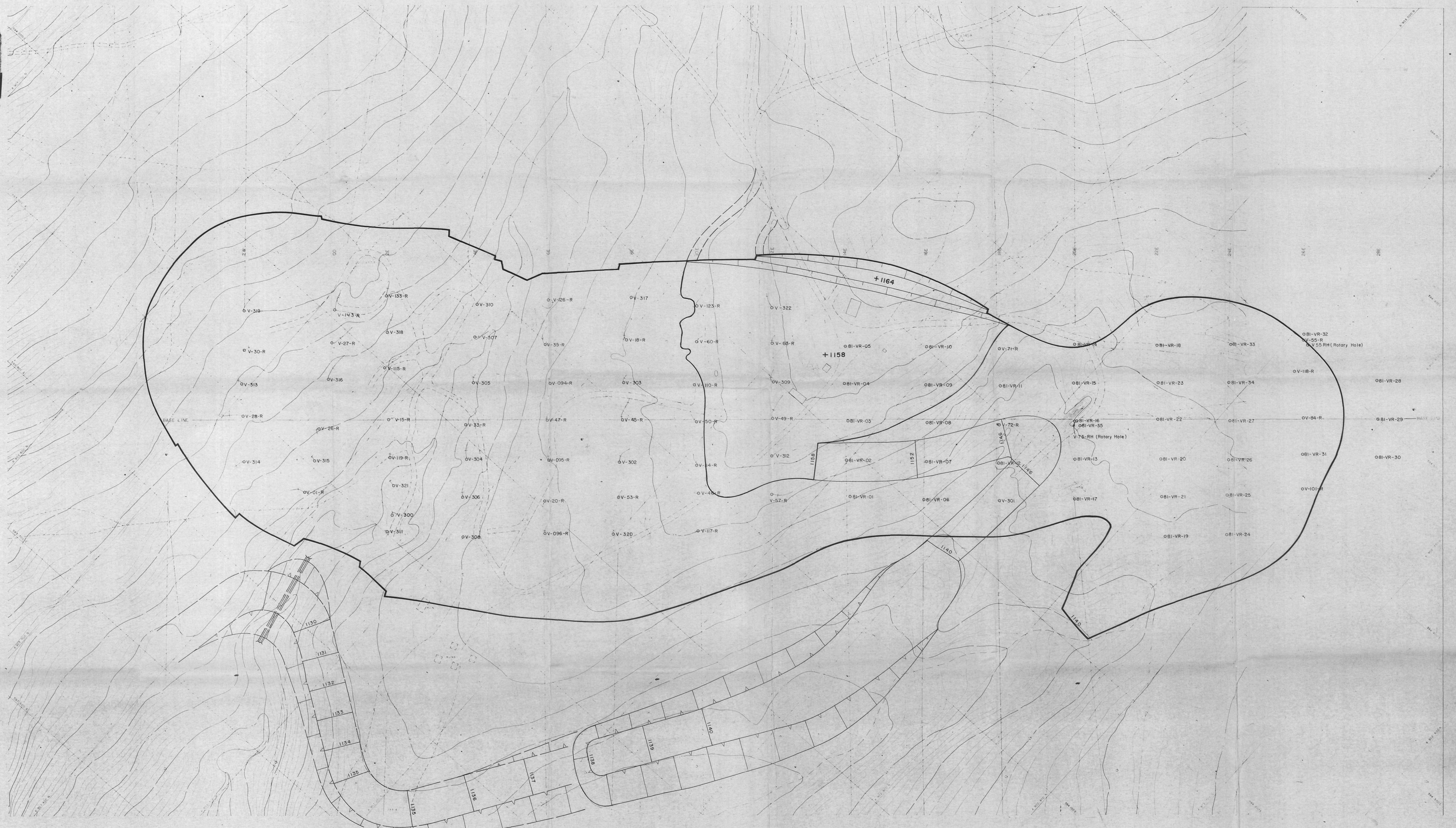


Curragh Resources Inc.

VANGORDA PLATEAU SITE PLAN

| | | |
|----------------------------------|------------------------|---------------------|
| OWN. BY: BCB DRAFTING SERVICE | CKD. BY: | SCALE: 1 : 5 000 |
| FILE NO.: | DATE: JULY 14, 1988 | |

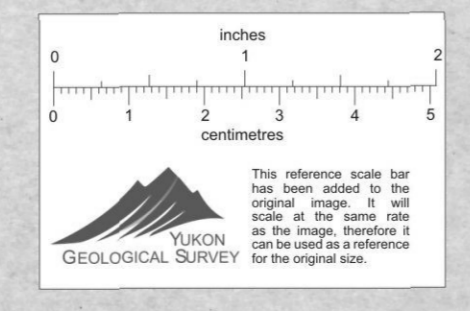




LEGEND

- | | |
|----------------|--------------------|
| MAIN ROAD | RIVER LAKE |
| SECONDARY ROAD | INTERMITTENT RIVER |
| TRACK OR TRAIL | TREED AREA |
| RAILWAY | INDIVIDUAL TREE |
| HEDGE FENCE | SPOT HEIGHT |
| BRIDGE CULVERT | CONTOURS |
| SWAMP | DEPRESSION |
| UTILITY POLE | CONTROL |

- | | |
|------------|---|
| ○ V-60-R | Vangorda DDH re drilled by C.A.M.C. in 1979 |
| ○ V-301 | C.A.M.C. 1979 DDH |
| ○ BI-VR-05 | C.A.M.C. 1981 rotary drill hole program |



CONTOUR INTERVAL 1 METRE

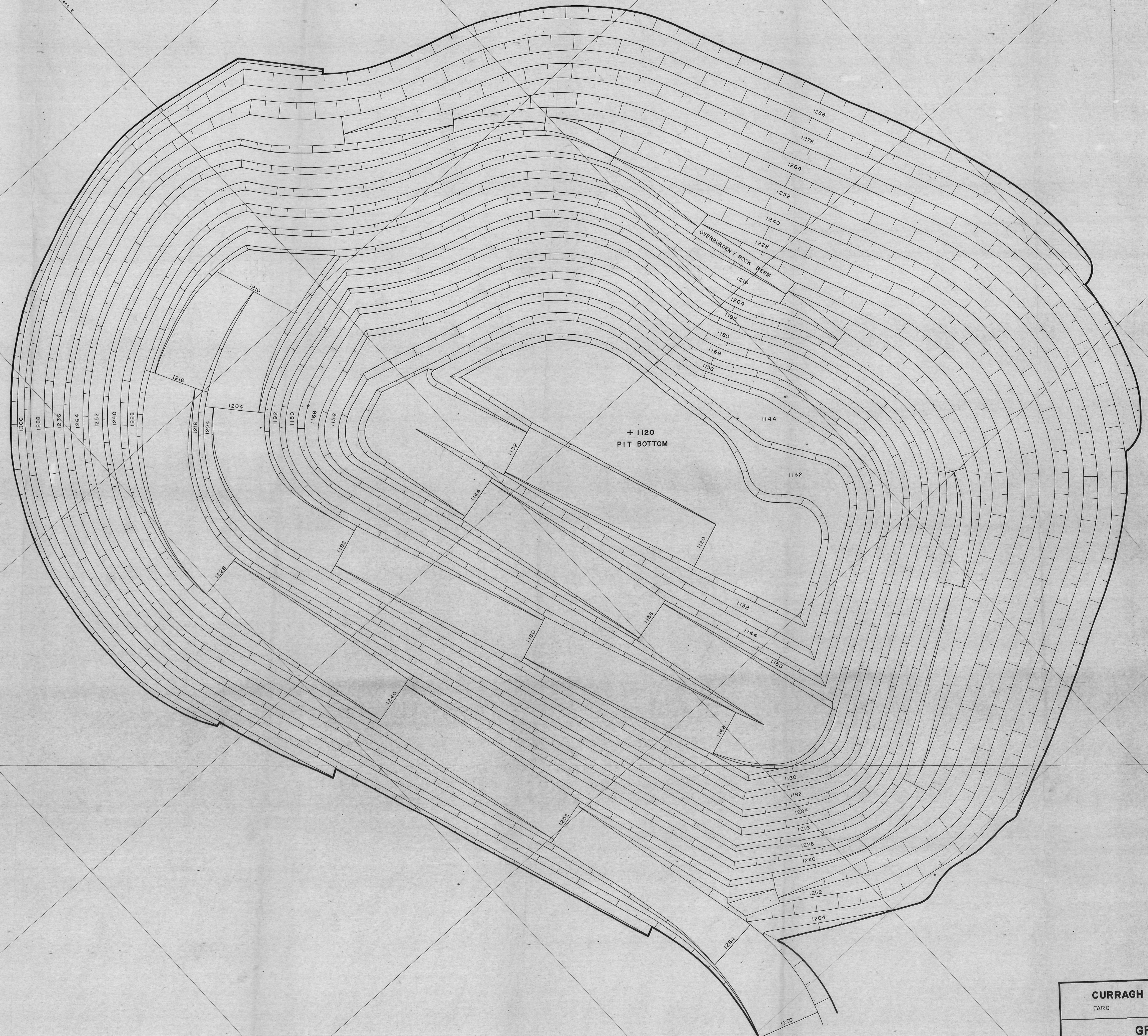
**CURRAGH RESOURCES
VANGORDA DEPOSIT
DRILL HOLE PLAN
SCALE 1:1000**

**VANGORDA PIT
PRESTRIPPING FOR 1988 (500,000 t O.B.)
2 of 3**



SHEET 1 OF 1
DATE OF PHOTOGRAPHY AUGUST 1979
CONTROL BY HOSFORD, IMPEY, WELTER & ASSOCIATES LTD

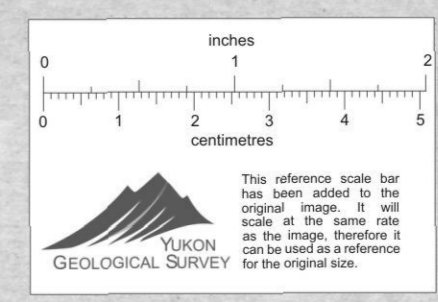
MAP 1B

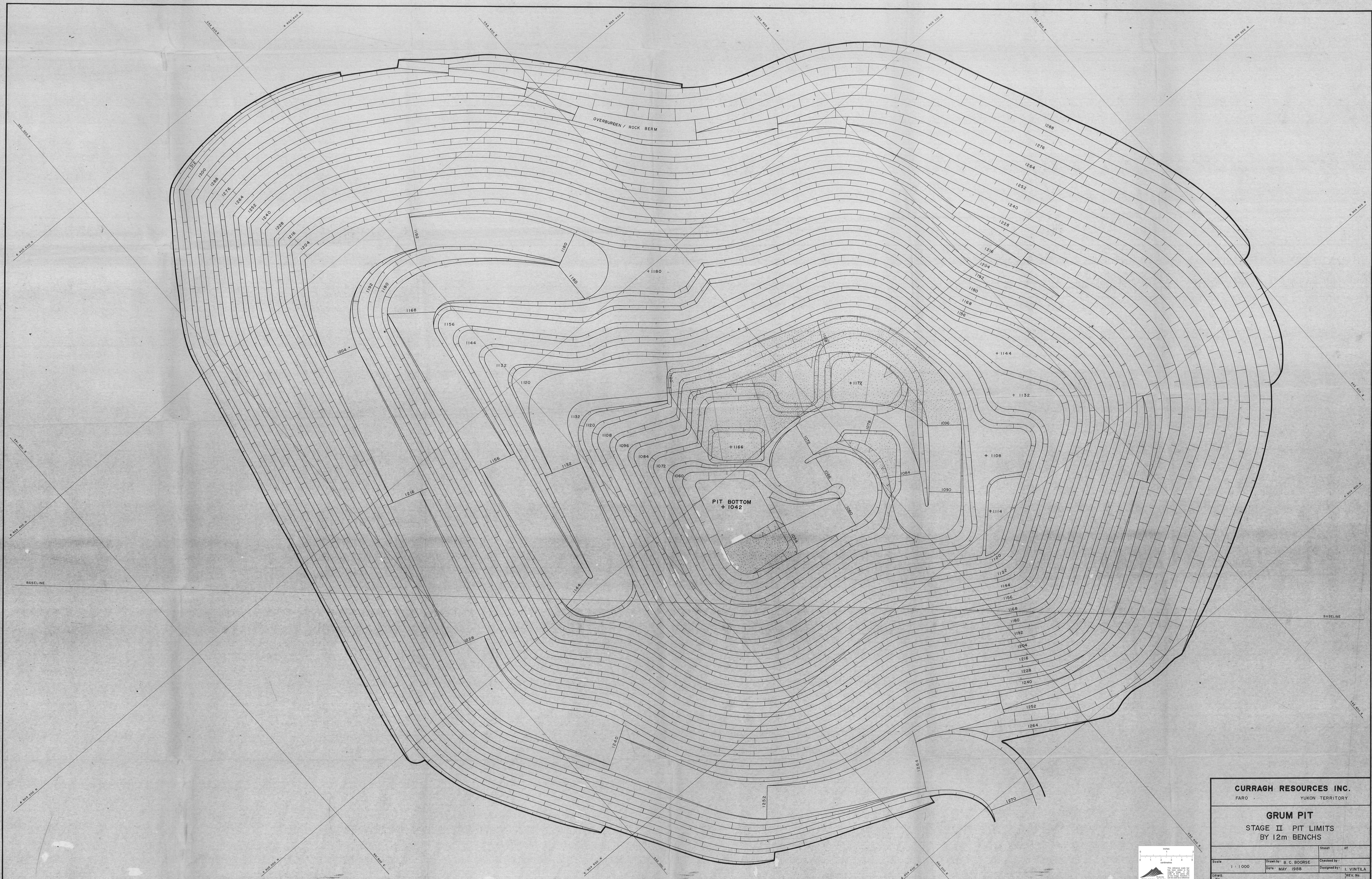


CURRAGH RESOURCES INC.
 FARO YUKON TERRITORY

GRUM PIT
 STAGE I PIT LIMITS
 BY 12m BENCHS

| | | | | | |
|-------|-----------|-------------|--------------|------------|--|
| Scale | 1 : 1 000 | Drawn by | B. C. BOORSE | Checked by | |
| Date | MAY 1988 | Designed by | I. VINTILA | REV. No. | |

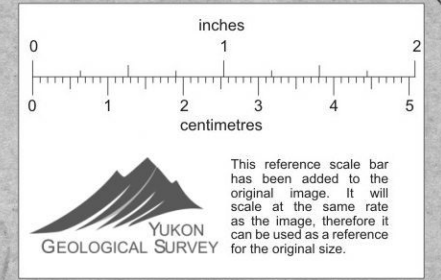


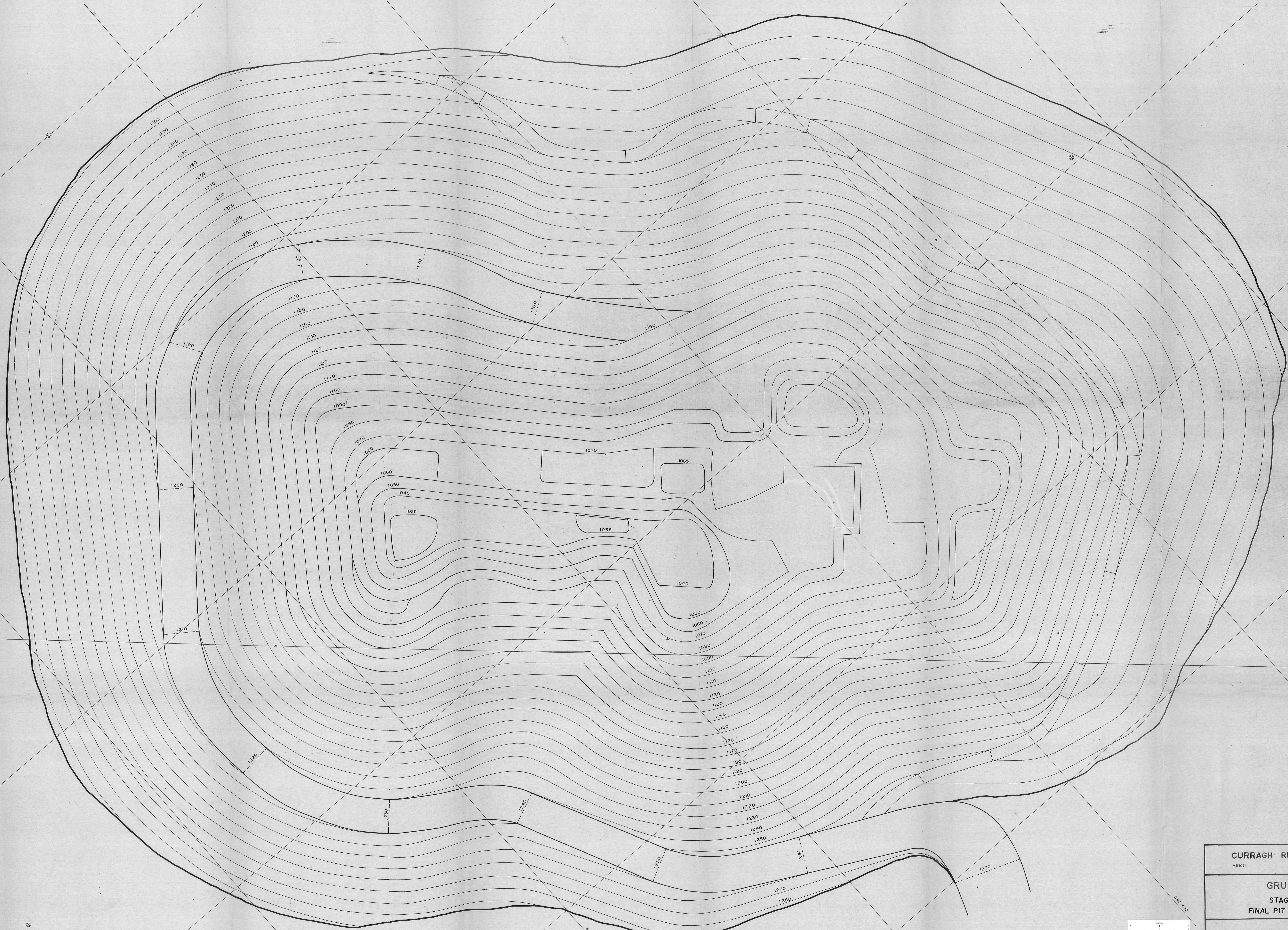


CURRAGH RESOURCES INC.
 FARO YUKON TERRITORY

GRUM PIT
 STAGE II PIT LIMITS
 BY 12m BENCHS

Scale 1 : 1000
 Date MAY 1988
 Drawn by: B. C. BOORSE
 Checked by: I. VINTILA
 Designated by: I. VINTILA
 REV. No.





CURRAGH RESOURCES INC.
FARU YUKON TERRITORY

**GRUM PIT
STAGE III
FINAL PIT HIGHWALLS**

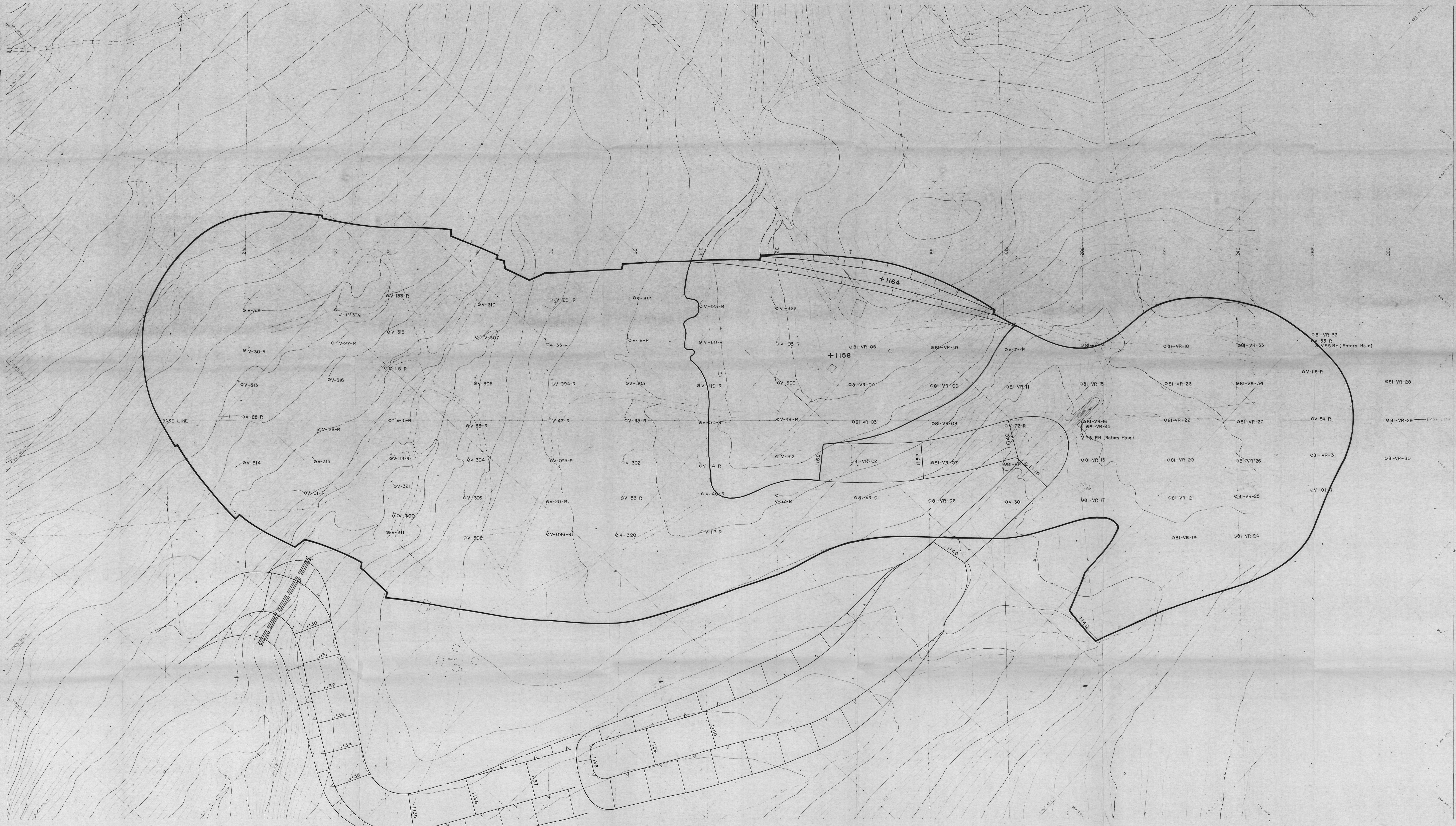
| | | | |
|------|-------|-------------|----------|
| DATE | SCALE | PROJECT NO. | REVISION |
| | | | |

1:50,000

0 1 2 3 4 5 6 7 8 9 10 METERS

0 1 2 3 4 5 6 7 8 9 10 FEET

© 2008 CURRAGH RESOURCES INC.

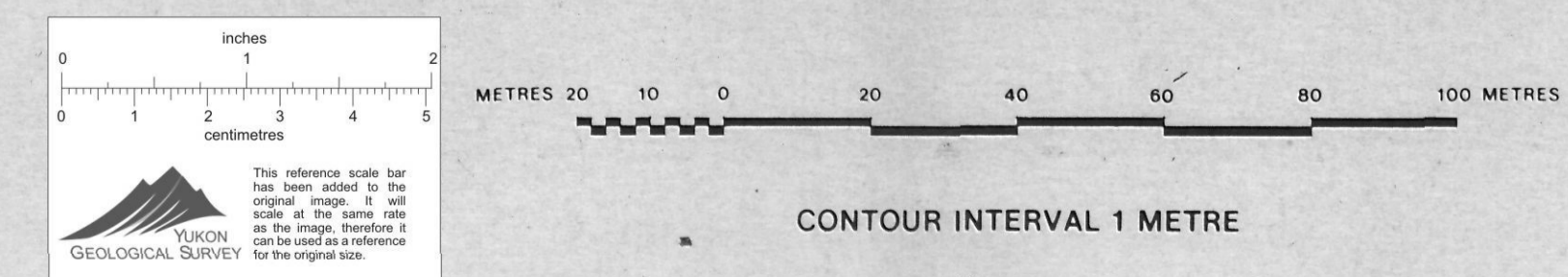


LEGEND

- MAIN ROAD
- SECONDARY ROAD
- TRACK OR TRAIL
- RAILWAY
- HEDGE FENCE
- BRIDGE CULVERT
- SWAMP
- UTILITY POLE
- RIVER LAKE
- INTERMITTENT RIVER
- THREED AREA
- INDIVIDUAL TREE
- TREE WEIGHT
- CONTOURS
- DEPRESSION
- CONTROL

- V-60-R Vangorda DDH redrilled by C.A.M.C. in 1979
- V-301 C.A.M.C. 1979 DDH
- 81-VR-05 C.A.M.C. 1981 rotary drill hole program

**CURRAGH RESOURCES
VANGORDA DEPOSIT
DRILL HOLE PLAN
SCALE 1 : 1000**



VANGORDA PIT
PRESTRIPPING FOR 1988 120,000 t O/B.
2 of 3



SHEET 1 OF 1
DATE OF PHOTOGRAPHY AUGUST 1979
CONTROL BY HOSFORD, IMPEY, WELTER & ASSOCIATES LTD.

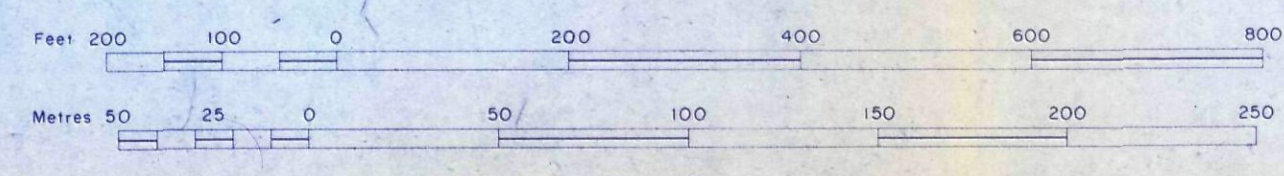
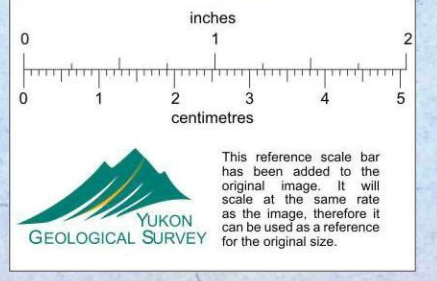
MAP 1B



CURRAGH RESOURCES INC.

ANVIL AREA

Scale 1:2000
Contour Interval 2.5 Metres



GENERAL MAP
PIT LIMITS, ROADS, DUMPS, DITCHES
& POWERLINES

| | | | |
|---|---|---|---|
| 1 | 3 | 5 | 7 |
| 2 | 4 | 6 | |

DRAWN BY: B. C. BOORSE
DESIGNED BY: J. VINTILA
DATE: MAY 1988

NORTH WEST SURVEY CORPORATION INTERNATIONAL LTD.

SHEET INDEX

| | | | |
|--------------|--------------|--|--|
| | | | |
| | | | |
| F-6 - (W1/2) | F-6 - (E1/2) | | |

1927
&
of
ne date.