

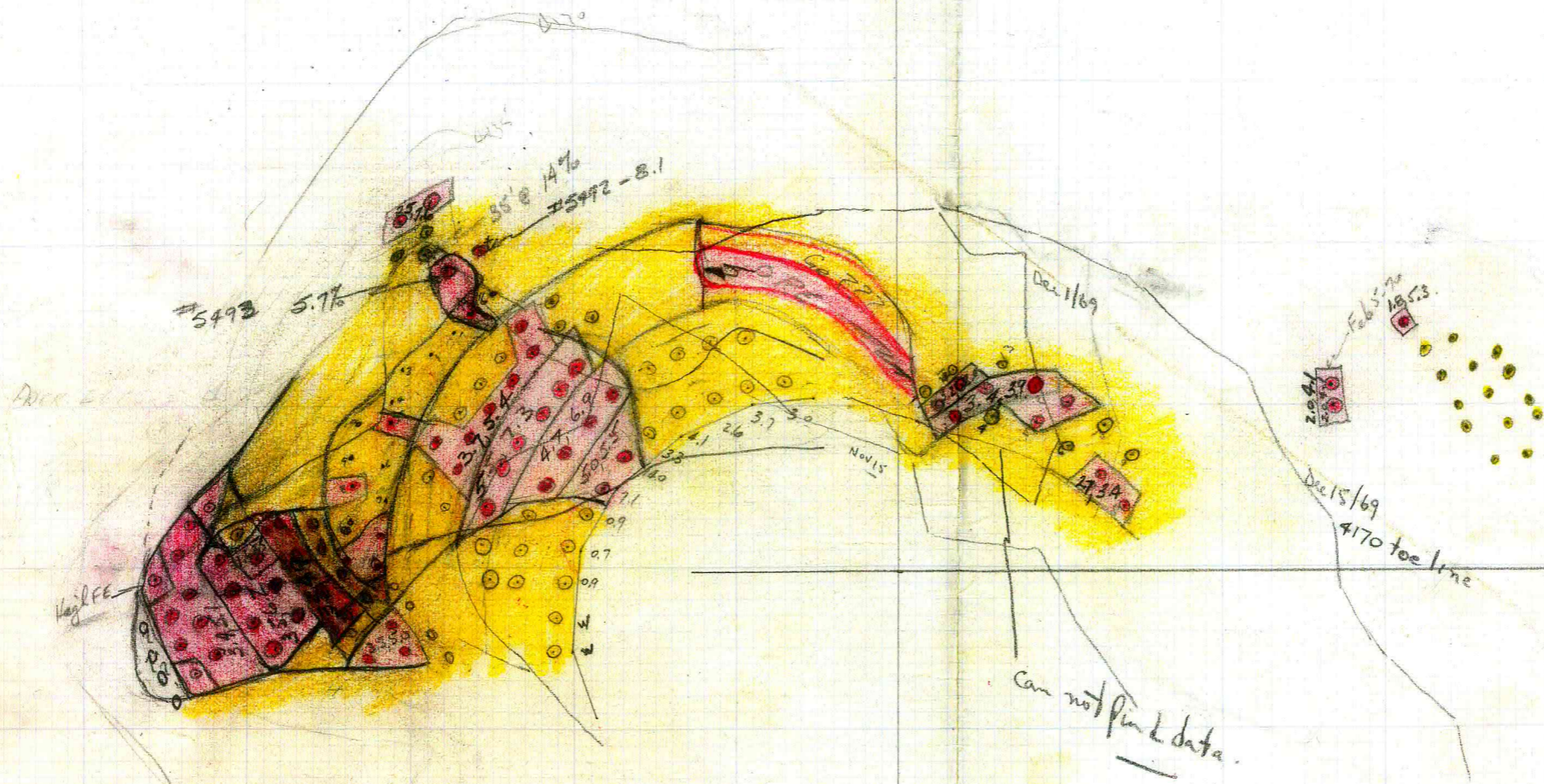
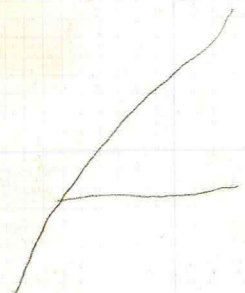
4135 ore holes
Feb. 24-70.

70-10

70-13

4135 BENCH - OCT. 20/69

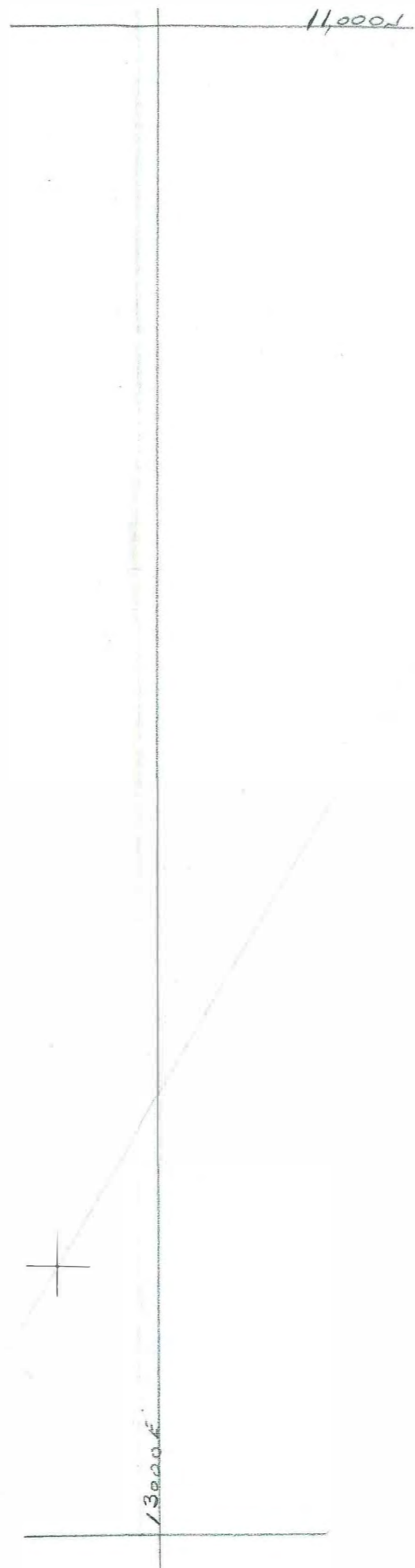
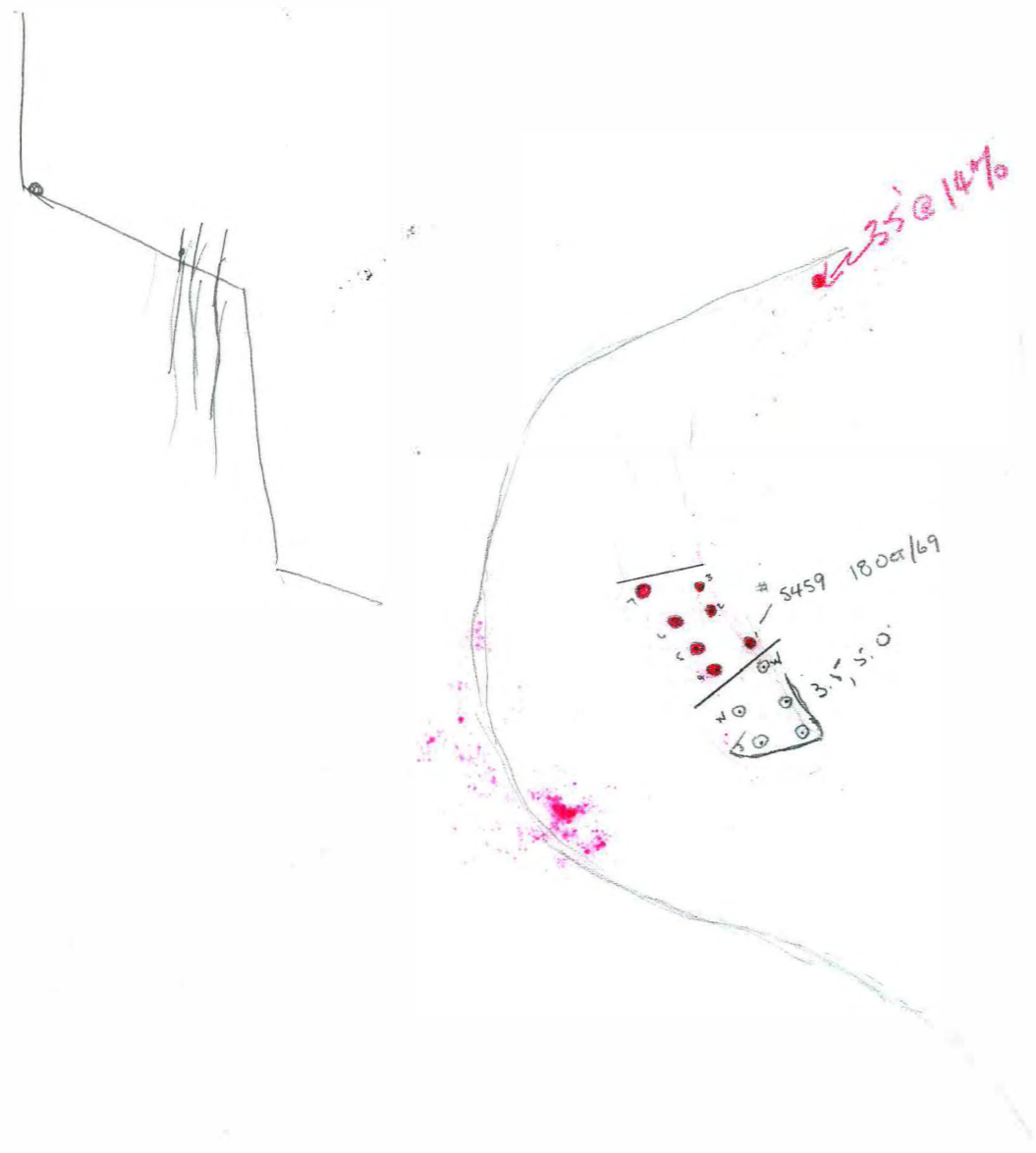
11,000 N

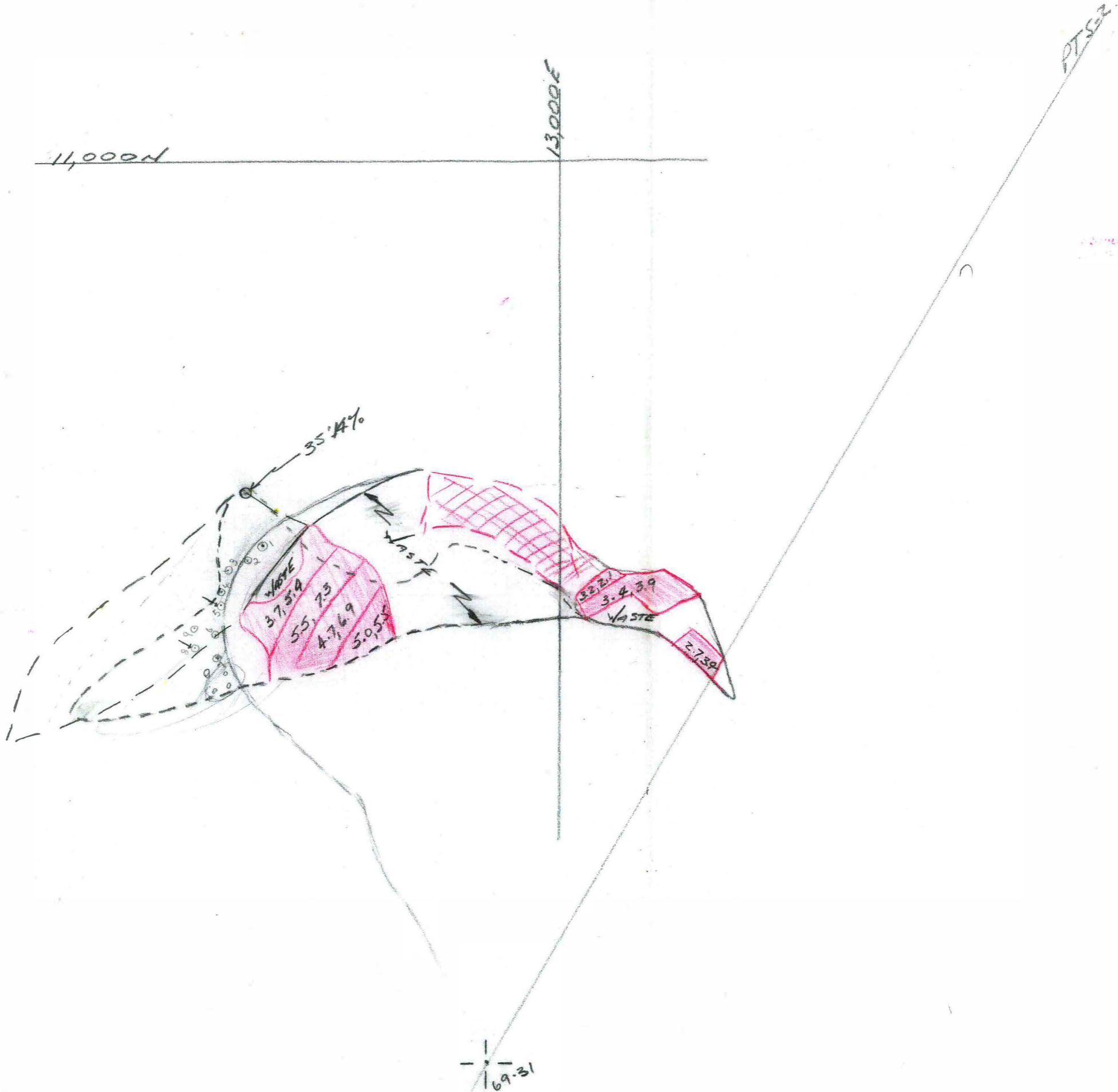




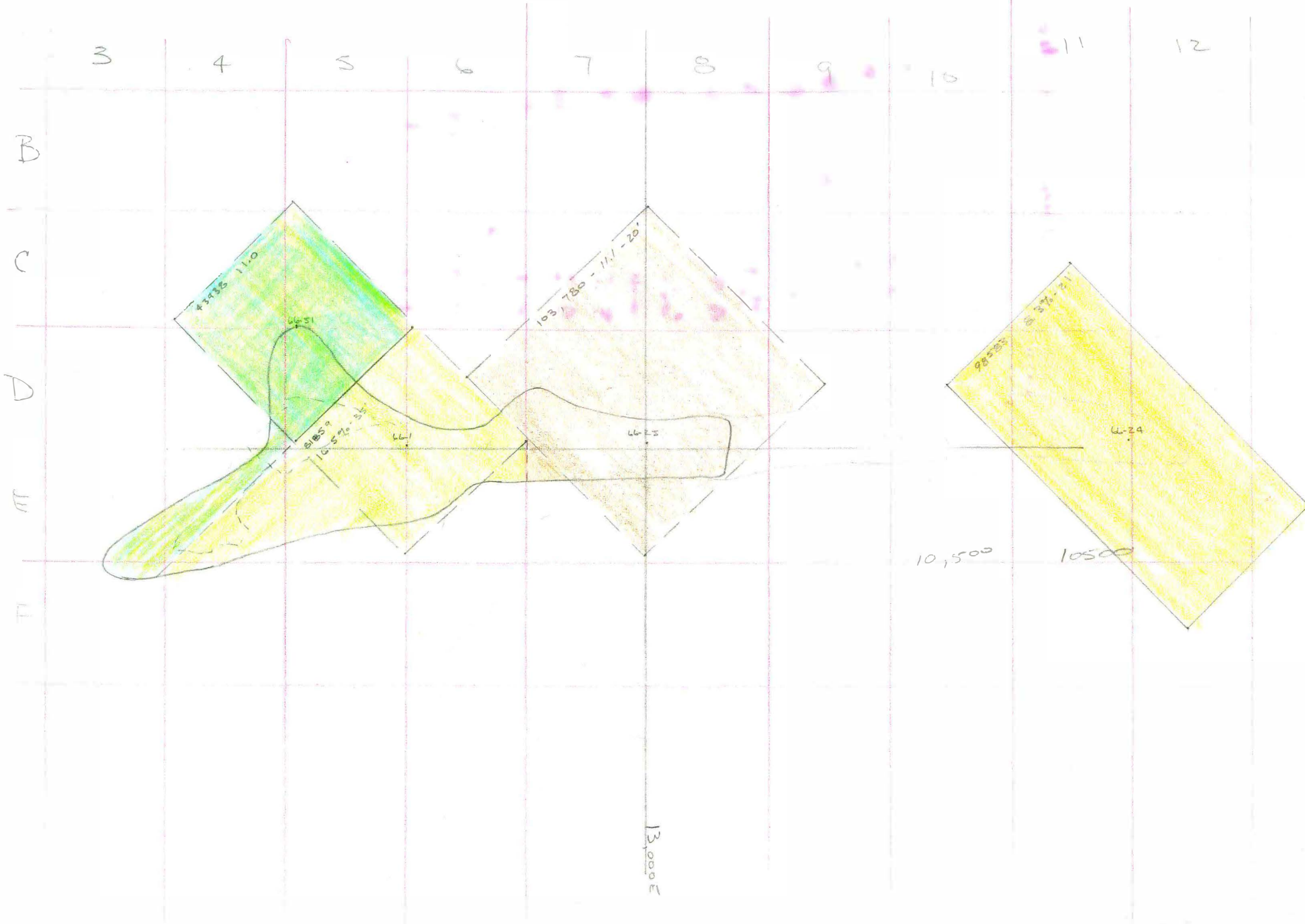
		Pb	Zr	Comb	Fl
1	5171	0.2	0.7	0.9	9.2
1	5170	0.2	0.6	0.8	8.2
2	5169	0.2	0.9	1.1	9.2
2	5168	0.2	0.6	0.8	8.9
3	5167	0.5	0.7	1.2	13.3
3	5166	0.7	0.8	1.5	10.6

4135 BENCH





11
 12
 13
 14
 15
 16
 17
 18
 19
 20
 21
 22
 23
 24
 25
 26
 27
 28
 29
 30
 31
 32
 33
 34
 35
 36
 37
 38
 39
 40
 41
 42
 43
 44
 45
 46
 47
 48
 49
 50
 51
 52
 53
 54
 55
 56
 57
 58
 59
 60
 61
 62
 63
 64
 65
 66
 67
 68
 69
 70
 71
 72
 73
 74
 75
 76
 77
 78
 79
 80
 81
 82
 83
 84
 85
 86
 87
 88
 89
 90
 91
 92
 93
 94
 95
 96
 97
 98
 99
 100



	Pb	Zn	
5363	4.7	6.8	1
	6.0	8.7	2
	5.6	7.9	3
	2.4	4.2	4
	<hr/> 18.7	<hr/> 27.6	
	4 = 4.7	4 = 6.9	
		11.6	

4135

Oct. 22 / 69

4135 Oct 20/69

Pb Zn.

5350	0.3	0.6	0.9
1	0.3	0.4	0.7
2	0.3	0.6	0.9
3	3.1	4.0	7.1
4	7.0	7.0	14.0
5	1.6	1.7	3.3
6	1.5	2.6	4.1
7	1.1	1.5	2.6
8	1.2	2.3	3.7
9	1.5	2.5	3.0

4135
Blust. Feb. 5-70



DAILY
 Tons | Gr | Units
 Pb-Zn.

TOT. TO DATE.
~~Quantity~~
 Tons Gr.

5000 4.0, 7.0

DAILY 20,000 25,000
~~2000~~

TOT. TO DATE

4135
 BENCH.
 Nov. 4/69.

		Zn			
5421	1.7	21	3.8		
A ↓	4.0	15	5.5		
	3.3	3.9	7.2		
	1.2	1.8	2.0		
	2.0	3.1	5.1		
	2.0	2.4	4.8		
	2.3	4.1	6.4		
	3.2	2.6	5.8		
	1.7	1.8	3.5		
	1.4	2.9	4.3		
	2.1	3.6	5.7		
	3.4	3.9	7.3		
	1.6	2.6	4.2		
	5434	2.3	2.4	4.7	

6.3 8.9
 3.2, 2.0

4135 BENCH

TOTAL = 5.43 0.277 171,239

	AREA	TONS	UNITS	AREA	TONS	UNITS	AREA	TONS	UNITS	TOTAL TONS	TOTAL UNITS	AVG GRADE
D4	0.010	6,182	68,002							6,182	68,002	11.0
D5	0.023	14,218	156,398	0.022	13,600	224,000				27,818	380,398	13.7
D6				0.014	8,655	142,808	0.003	1,855	20,591	10,510	163,399	15.5
D7							0.025	15,455	171,550	15,455	171,550	11.1
D8							0.012	7,418	82,340	7,418	82,340	11.1
E3	0.008	4,946	54,406							4,946	54,406	11.0
E4	0.020	12,364	136,004	0.028	17,309	285,598				29,673	421,602	14.2
E5				0.047	29,055	479,408				29,055	479,408	16.5
E6				0.028	17,309	285,598				17,309	285,598	16.5
E7							0.018	11,127	123,510	11,127	123,510	11.1
E8							0.010	6,182	68,620	6,182	68,620	11.1
F3	0.006	3,709	40,799							3,709	40,799	11.0
F4				0.003	1,855	30,608				1,855	30,608	16.5
	0.067	41,419	455,609	0.142	87,783	1,448,020	0.068	42,037	466,611	171,239	2,370,240	13.8

BENCH 4135

2358.9	4358.9
<u>2135.0</u>	<u>2170.0</u>
223.9	188.9

HOLE # 66-51

COLLAR ELEV. 4358.9

BENCH INTERSECTION. 188.9 to 223.9

1.1	1.52	4.4	8.4	1.67	4.8	9.2
5.0	0.70	1.5	3.8	3.50	7.5	19.0
5.0	0.46	1.1	2.8	2.30	5.5	14.0
5.0	0.48	0.6	4.0	2.40	3.0	20.0
5.0	0.50	2.7	9.2	2.50	13.5	46.0
5.0	1.56	1.7	3.0	7.80	8.5	15.0
5.0	3.33	6.3	17.0	19.40	31.5	85.0
3.9	4.32	5.9	17.4	16.85	23.0	67.9

56.42	97.3	276.1
1.61	2.2	7.9

HOLE # 66-1

4329.0	4329
<u>2170.0</u>	<u>2135</u>
159.0	194

COLLAR ELEV. 4329.0

BEN. INT. 159.0 to 194.

4.2	1.48	6.2	10.8	6.22	26.0	45.4
4.9	1.72	6.5	11.4	8.43	31.9	55.9
4.4	1.72	5.8	10.4	7.57	25.5	45.8
4.6	1.60	4.8	10.4	7.36	22.1	47.8
5.0	2.44	5.7	10.4	12.20	28.5	52.0
4.9	1.24	4.6	9.1	6.08	22.5	44.6
4.9	1.32	4.9	12.1	6.47	24.0	59.3
2.1	2.04	8.5	12.5	4.28	17.9	26.3

35'		58.61	198.4	377.1
		1.67	5.7	10.8

4321.2	4321.2
4135	4170.2
186.2	151.2
35	
291.2	

BENCH 4135

Hole 66-25

Collar 4321.2

Bench Intersect 151.2 to 186.2

3.8	0.14	0.2	0.4	0.53	.8	1.5
5	0.70	2.3	3.2	3.50	11.5	16.0
5	1.25	5.4	7.0	6.25	27.0	35.0
5	2.95	7.1	8.6	14.75	35.5	43.0
5	1.05	2.3	3.4	5.25	11.50	17.0
11.2	-	-	-	-	-	-
				30.28	86.2	112.5
35'				0.87	2.5	3.2
23.8'				1.27	3.6	4.7

Hole #66-24

Collar 4309

4309	4309
4135	4135
174	174

Bench Intersect 139 to 174

1.0	1.2	1.4	6.6	1.20	1.4	6.6
5.0	0.56	0.4	4.8	2.80	2.0	24.0
5.0	2.0	2.4	7.1	10.00	12.0	35.5
5.0	0.12	0.1	0.2	0.60	0.5	0.1
15.0	-	-	-			
4.0	4.2	6.6	5.4	16.80	26.4	21.6
				31.40	54.9	87.8
35'				0.90	1.6	2.5
20'				1.57	2.8	4.4