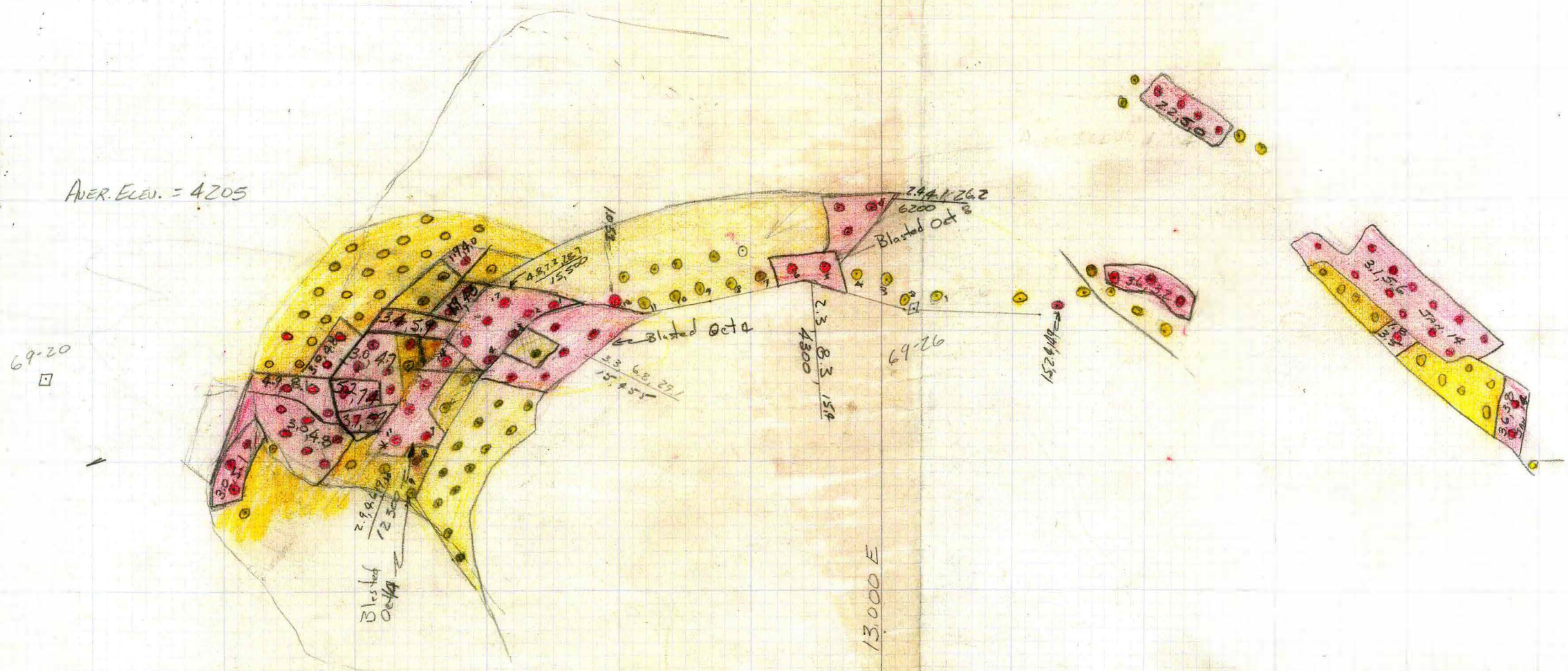


4170 BENCH - OCT. 7/69

16,000N

0.025 154,540 = 15,455
0.020 12,364

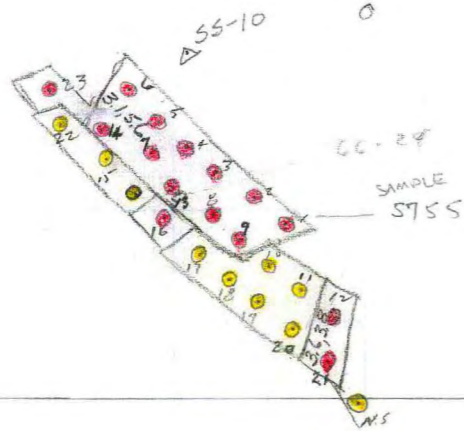
AVER. ELEV. = 4205



002012

4170 BENCH - JAN. 13/70

o AFO GRSE



AVER. ELEV. = 4207

70.3 \triangle

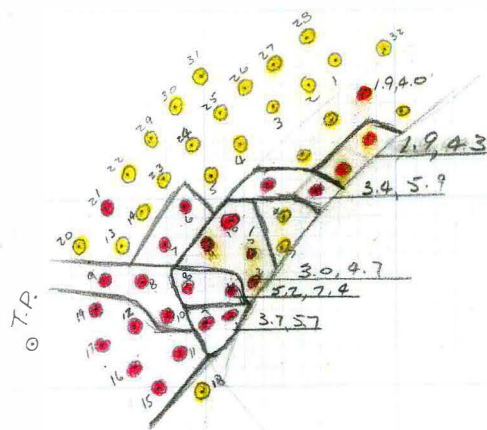
14,000 E

4170 BENCH - OCT. 18/69

11,000 N

AVER. ELEV. = 4206

69-20
○



SAMPLES 5322 - 5349.

○
69-29

13,000 E

Oct 18/69

~~2~~

✓
5.8

✓
9.6

✓
7.0

✓
7.1

✓
1.6

11
8.4

11

12
7.9

✓
5.3
10
14.6

13
13.0

✓
20
12.1
13.1

8.15

13

7.9

14

21
6.6

7.7

✓
22
7.1

5.29

23

29

4.9.3

24
4.0

30

3.3.4

25

31

2.5.4

26
2.6

3.6

27
3.0

28
3.0



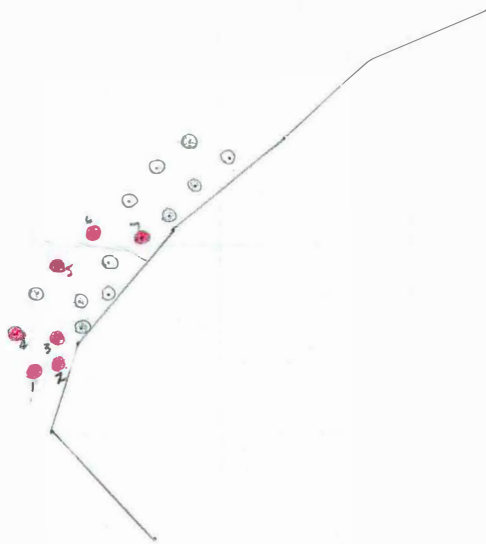
29
3.0
30
3.0
31
3.0

4170 BENCH - OCT. 16/69

11,000 N

AVER. ELEV. = 4205

69-20



SAMPLE #

5310	1 - 9.4 %
5304	2 - 9.6 %
	3 - 12.0 %
	4 - 13.8 %
	5 - 9.2 %
	6 - 11.0 %
	7 - 8.1 %

69-29

13,000 E

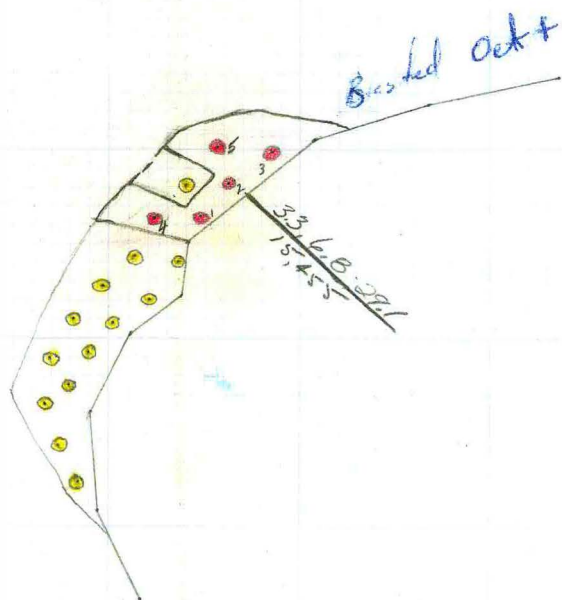
4170 BENCH

OCT. 4/69

11,000 N

69-20

AVER. ELEV. = 4205



69-26

combined with next plan

13,000 E

Pit samples Oct 17 1969

4170

No.	%	Pb	Zn			
5322		1.1	2.5	3.6	1	
23		2.1	3.3	5.4	2	
24		.8	2.6	3.4	3	
25		3.7	5.6	9.3	4	
26		1.0	1.9	2.9	5	
27		2.9	4.8	7.7	6	
28		3.0	4.9	7.9	7	
29		4.5	7.0	11.5	8	
30		5.0	8.0	13.0	9	
5331		.8	1.6	2.4	10	? 14.6
32		3.5	4.9	8.4	11	
33		3.3	4.6	7.9	12	
34		0.6	0.7	1.3	13	
35		0.8	0.9	1.7	14	

#10 runs 36

12

6.6

1

5.8

2

6.6

3

4.1

4

8.5

5

16.5

6

9.2

7

9.3

8

9

5.9

6

4.5

7

8

4.0

9

10

6.3

11

4.1

58
88
48
28
JLennart

4170

Oct 18 1964

Pit samples.

	% Pb	% Zn			
✓ 5336	5.2	9.4	14.6	10	✓
✓ 37	2.4	4.4	6.8	15	✓
✓ 38	3.6	6.0	9.6	16	✓
✓ 39	2.9	4.1	7.0	17	✓
40	.5	1.1	1.6	18	
✓ 41	2.5	4.6	7.1	19	
42	.5	1.5	2.0	20	
43	2.4	3.6	6.0	21	
44	.9	.8	1.7	22	
45	1.5	2.5	4.0	23 24	
46	1.0	1.6	2.6	25 26	
47	.7	2.3	3.0	26 27	
48	.8	2.2	3.0	28	
53 49	2.2	1.9	4.1	29 30 30	

SAMPLE ASSAY SHEET

Oct 16/19

	5301	3.7	4.7		
	2	3.6	5.6		
	3	4.0	4.5		
✓	4	3.7	5.9	9.6	1
✓	5	2.7	4.1	6.8	2
	6	1.8	3.1	4.9	3
	7	1.9	3.3	5.2	4
✓	8	2.8	4.8	7.6	5
✓	9	5.2	6.8	12.0	6
✓	10	3.7	5.5	9.4	7
✓	11	5.3	8.0	13.3	8
✓	12	2.8	4.2	7.0	9
✓	13	3.6	5.6	9.2	10
✓	14	3.0	5.1	8.1	11
✓	15	2.1	3.6	5.7	12
✓	16	1.7	5.0	6.7	13
	17	0.8	2.0	2.8	14
✓	18	1.9	4.0	5.9	15
	19	1.8	2.6	3.8	16
	20	1.5	3.4	4.9	17
✓	21	4.3	6.7	11.0	18

19	3.7	5.9	5.2, 6.8	2.7	4.1
18	3.7	5.5	5.3, 8.0	2.8	4.8
	3.7	5.7	5.2, 7.4	2.8	4.2
				3.6	5.6
				11.9	18.7
				4	4

11 1/2 18
 3.0, 5.1
 4.3, 6.7
7.3, 11.8 = 3.4, 5.9
 2 9.3

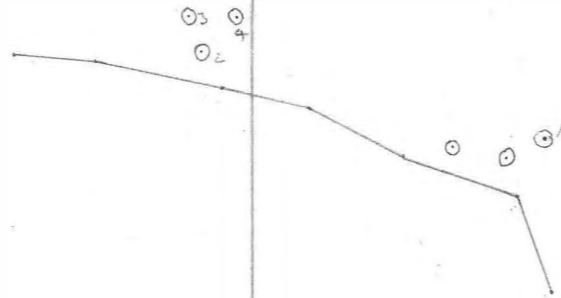
3.0 4.7

4170 BENCH - OCT. 10/69

11000 N

13.000 E

AVER. ELEV. = 4203



69-29 ⊙

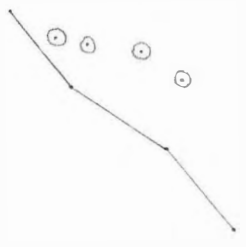
69-28 ⊙

4170 BENCH - OCT. 25/69

11,000 N

69-13

69-27



ELEV. = 4203

13,000 E

4170 BENCH.

TOTAL. $0.154 + \frac{1}{2}(0.048)$

$= 0.178 = 110,038$

						TONS			TONS					Avg	
AREA	TONS	UNITS	AREA	TONS	UNITS	AREA	TONS	UNITS	AREA	TONS	UNITS	TOTAL TONS	TOTAL UNITS		GR.
D4			0.014	8655	106,457							8655	106,457		12.3
D5						0.015	9,272	117,754				9272	117,754		12.7
D6						0.010			0.004	8655	109,919	8655	109,919		12.7
D7									0.004	2473	31,407	2473	31,407		12.7
E2	0.001	618			4388							618	4388		7.1
E3	0.015	9,273	0.008	4946	60,836							14219	126,674		8.9
E4			0.060	37,092	456,231							37,092	456,231		12.3
E5			0.017	10,508	129,248	0.010			0.004	8655	109,919	19,163	239,167		12.5
E6						0.004	2473	31,407				2473	31,407		12.7
F2	0.001	618			4388							618	4388		7.1
F3	0.008	4946			35,117							4946	35,117		7.1
F4	0.003	1854	0.003	1854	22,804							1854	22,804		1.3
	0.028	15,455	0.099	61,201	775,576	0.051	31,528	400,406				110,038	1,285,713		11.7

BENCH # 4170

Tons remaining (ore) to be mined. = 50,000

GRADE. ^{10.5} 11.5% Combined on 4.1, 7.4

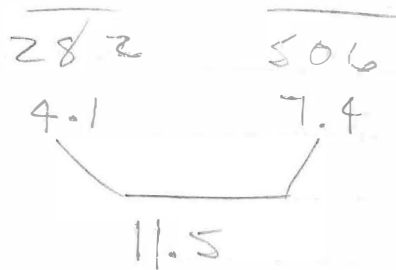
4170

~~25~~ 3, ~~15~~ 1, ~~24~~, 14, ~~19~~, ~~23~~

25	16	4.4, 6.7
15	7	2.4, 4.5
	17	5.1, 9.4
24	9	4.2, 8.3
19	10	2.7, 5.8
23	9	4.8, 8.3

70	107
17	31
87	160
38	75
27	58
43	75

68



4170 Bench

BORE HOLE TESTING

19 10' 1.24 2.7 5.8

23	9'	1.88	4.8	8.3	$\frac{9}{35} \times$
24	9'	0.92	4.2	8.3	$\frac{9}{35} \times$
25	16'	1.64	4.4	6.7	$\frac{16}{35} \times$
3	9	0.56	1.6	2.9	$\frac{9}{35}$
3	14	1.68	6.1	9.9	$\frac{14}{35}$
14	not drilled on this bench.				
13	" " " " "				

13	not drilled on this bench.				
15	7'	1.72	2.4	4.5	$\frac{7}{35}$
3	17	1.84	5.1	9.4	$\frac{17}{35}$
11	25'	1.08	3.7	7.0	$\frac{25}{35}$
	13'	0.56	1.1	3.7	$\frac{13}{35}$
	11'	0.30	0.6	1.5	$\frac{11}{35}$

8 8 0.40 0.9 2.1

4331.4
 4205

 126.4

4331.4
 4170

 171.4

4170 BENCH

DD# 66-48

Collar Elev.

BENCH INTER. 126.4 to 171.4

3.6	1.40	1.9	3.5	5.04	6.8	12.6
5.0	2.60	5.1	4.3	13.00	25.5	21.5
5.0	0.97	1.5	5.0	4.85	7.5	25.0
5.0	1.08	1.6	2.7	5.40	8.0	13.5
16.4	-	-	-			
				28.29	47.8	72.6

35'				0.81	1.4	2.1
18.6'				1.52	2.6	3.9

DD 66-19

Collar elev 4341.9

Bench Inter.

4341.9
 4205

 136.9

4341.9
 4170

 171.9

3.1	0.52	0.6	3.3	1.61	1.9	10.2
5.0	3.26	5.3	12.5	16.30	27.5	62.5
5.0	1.56	5.3	8.5	7.80	26.5	42.5
5.0	1.95	4.2	8.2	9.75	21.0	41.0
5.0	2.82	6.0	9.2	14.10	30.0	46.0
5.0	2.18	4.1	7.6	10.90	20.5	38.0
6.9	2.43	3.5	5.3	12.15	17.5	26.5

35'				72.61	144.9	266.7
				2.07	4.1	7.6

4170 Bench

66-1

Collar ELEV. 4329.0

BENCH INT.

4329.0	4329.
<u>4205</u>	<u>4170</u>
124	- 159

124-130 - 6	-	0	0	0	0	0	0
130-134.5 4.5		0.20	0.2	2.4	0.90	0.9	1.1
<u>134.5-137.7 - 3.2</u>		0	0	0	<u>0</u>	<u>0</u>	<u>0</u>
137.7 139.4 1.7		1.08	3.3	6.0	1.84	5.6	10.2
139.4 - 144.4 5.0		-	6.5	11.0	0	32.5	55.0
144.4 - 146.0 1.6		1.80	5.8	11.6	2.88	9.3	18.6
146.0 - 147.2 1.2		1.20	4.3	2.2	1.44	5.2	2.6
147.2 149.2 - 2.0		2.04	6.2	9.4	4.08	12.4	18.8
149.2 - 153.9 4.7		1.76	6.8	10.9	8.27	32.0	51.2
153.9 - 158.3 4.4		1.16	5.4	9.8	5.10	23.8	43.1
158.3 - 159.0 0.7		1.48	6.2	10.8	1.04	4.3	7.6

35'	25.55	126.0	208.2
21.3'	24.45	125.1	207.1
	0.73	3.6	5.9
	<u>1.15</u>	<u>5.9</u>	<u>9.7</u>

35'
21.3'