

Cell Midpoint	f	d	fd	fd ²
1.0	2	+10	+20	200
1.5	10	+9	+90	810
2.0	18	+8	+144	1152
2.5	25	+7	+175	1225
3.0	46	+6	+276	1656
3.5	100	+5	+500	2500
4.0	122	+4	+488	1952
4.5	165	+3	+495	1485
5.0	195	+2	+390	780
5.5	239	+1	+239	239
6.0	318	0	0	0
6.5	253	-1	-253	+253
7.0	155	-2	-310	+620
7.5	90	-3	-270	+810
8.0	65	-4	-260	+1040
8.5	63	-5	-315	+1565
9.0	32	-6	-192	+1152
9.5	12	-7	-84	+588
10.0	9	-8	-72	+576
10.5	14	-9	-126	+1134

$\Sigma f = 1933$

$\Sigma fd = +935$

$\Sigma fd^2 = 19,737$

$$\bar{X} = A + \frac{i \Sigma fd}{n}$$

$$= 6.0 + \frac{(1.5)(+935)}{1933}$$

$$= 6.0 + .74$$

$\bar{X} = 6.24$

$S = 1.76$

$\bar{X} =$

$$S = i \sqrt{\frac{n \Sigma fd^2 - (\Sigma fd)^2}{n(n-1)}}$$

$$= .5 \sqrt{\frac{1933(19737) - (935)^2}{1933(1932)}}$$

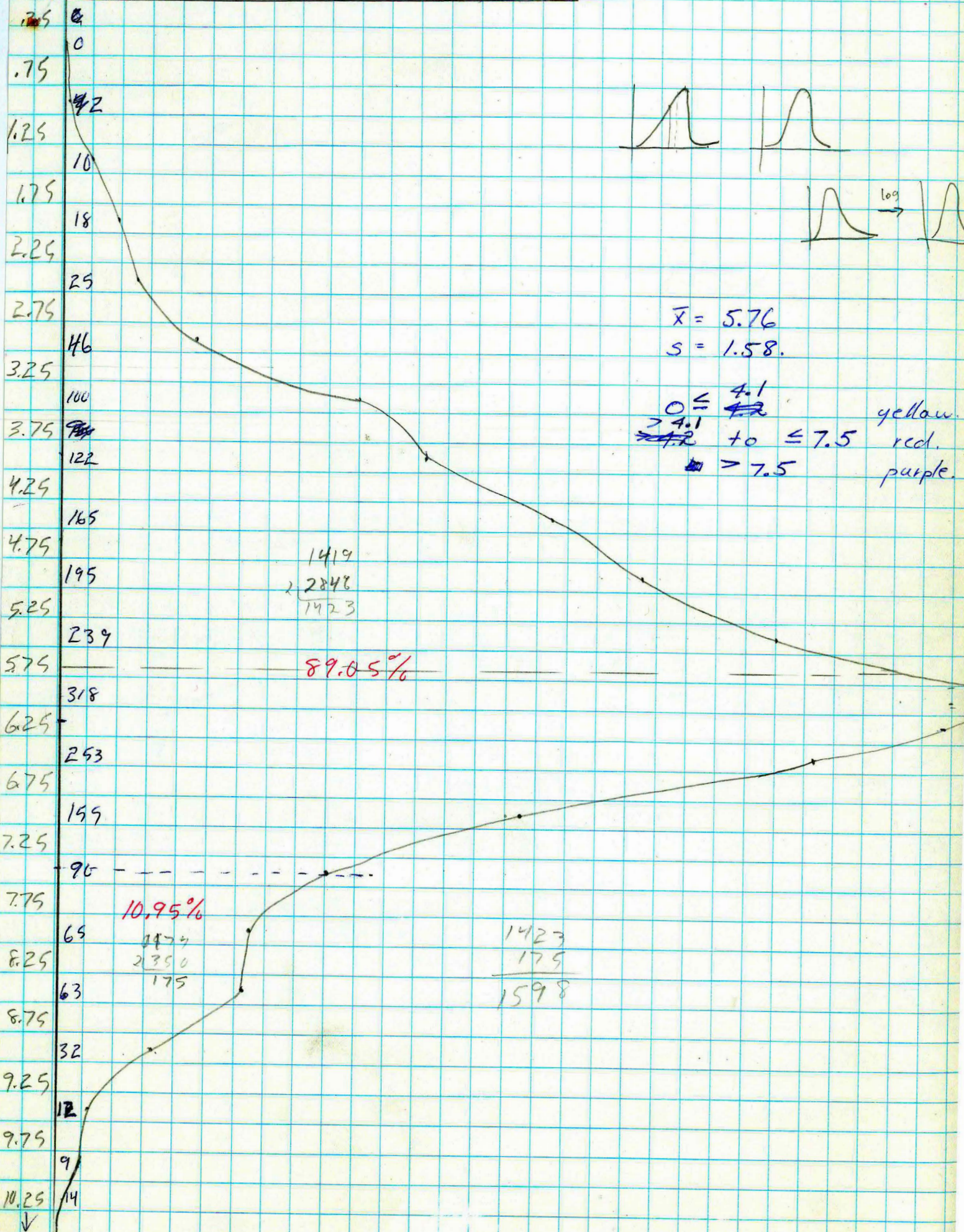
$$= .5 \sqrt{\frac{38151621 - 874225}{3734556}}$$

$$= .5 \sqrt{9.98}$$

$$= .5 (3.159)$$

$S = 1.58$

ZINC (TOTAL)



3910 ZINC

.25

✓

.75

✓

1.25

|||| 7 ✓

1.75

|||| 7 ✓

2.25

|||| 8 ✓

2.75

|||| 14 ✓

3.25

|||| 23 ✓

3.75

|||| 34 ✓

4.25

|||| 32 ✓

4.75

|||| 31 ✓

5.25

|||| 32 ✓

5.75

|||| 25 ✓

6.25

|||| 24 ✓

6.75

|||| 11 ✓

7.25

|| 2 ✓

7.75

|| 2 ✓

8.25

|| 2 ✓

8.75

9.25

9.75

10.25

↓

830 - ZINC

