

1972

PHASE 3

002120

3950 70-11 2.2 7.5

66-9* 2.8 5.9

66-39 3.4 9.5

66-18 3.3 6.1

3910 70-9 4.1 6.0

~~70-11** 1.0 3.6 ?~~

66-9 3.6 8.7

66-14 3.4 7.4

3870 70-15 5.2 8.6

65-5A 6.0 6.7

70-9* 2.5 5.1

70-4* 2.2 4.2

66-14* 2.6 3.7

PHASE ①

1,91,220 tons 4.43% Pb, 7.13% Zn (11.56% combined)

PHASE ②

976,317 tons 4.09% Pb, 7.42% Zn (11.51% combined)

At 7300 tons 11.52% combined

PHASE ① = 163 days

PHASE ② = 133 days.

#

Phase I

Tons		
9800	32340	55860
113,800	204840	660040
82,500	239250	561000
44,500	111250	271450
73,900	147800	605900
76,100	251130	502260
97,200	349920	651240
34,290	61722	195453
52,500	157500	299250
72,350	383455	626680
18,090	66933	123012
92,700	185400	361530
70,500	162500	387750
28,600	85800	223080
137,170	658416	795586
21,850	137655	157320
107,800	388080	420420
8,160	26928	50040
88,200	238140	573300
64,800	356400	414720
41,800	83600	129580
6,800	40800	45560
28,600	148720	245960
5,300	99680	48230
72,300	527790	643470
84,400	337600	455760
134,100	536400	831420
103,300	506170	816070
39,200	152800	206280
57,200	280280	326040
36,000	244800	444600
12,300	95890	131570
6,400	5760	32000
<u>1,931,510</u>	<u>7383239</u>	<u>12305551</u>
	13.82%	6.37%
<u>736,970</u>	<u>3364134</u>	<u>5289697</u>
<u>2,668,480</u>	<u>10747373</u>	<u>17595248</u>
	4.02	6.59
	<u>508256</u>	<u>635320</u>
	<u>11255624</u>	<u>18220568</u>

2,850,000
26,68,480

UGSP 181,520

↘ Pb Zn
2.8 3.5

1:1.25

508 256 635 320

3.95% Pb 6.40% Zn

1:1.22

Comb 10.35 comb

~~2850~~ from
1971 end of year

<u>3950</u>	Pb	Z	calc	term		
66-25	3.5	4.9	8.4	9880	34302	48020
66-32	4.1	5.8	9.9	64800	265680	375840
70-1	2.9	6.8	9.7	23,370	67773	158916
70-5	4.5	6.5	11.0	53,520	240840	347880
70-16	3.1	6.8	9.9	76,860	238266	522648
70-2	3.3	6.6	9.9	30,880	101904	203808

265680

3910

66-15	4.4	6.7	11.1	58,020	255332	388801
70-5	3.0	7.8	10.8	58,030	174090	452634
66-32	4.0	7.8	11.8	126,560	506240	987168
66-44	7.3	8.6	15.9	30,850	225205	265310

3870

66-15	5.5	6.4	11.9	106,200	584100	679680
70-5	2.2	6.6	9.8	13,670	43744	9022
65-11	6.7	7.4	14.1	40,700	27690	301180
66-44	8.1	10.7	18.8	43,700	353970	467990
				<u>736,970</u>	<u>3364134</u>	<u>5289697</u>

4.56 7.18



11.74

38.84% 61.16. %

11.52. → 4.47% Pb 7.05% Zn

736,970
655,890
1275,620
1126
2,168,480

1972 PHASE 1

7300 TONS = 11.52% Pb + Zn

	Pb	Zn	comb.	Tons	comb. tons			
2850	70-9	3.3	5.7	9.0	9800	88200	X	32340 55860
	65-4	1.8	5.8	7.6	113,800	864880	X	204840 660040
	70-1	2.9	6.8	9.7	82,500	800250	□ →	239250 561000
	65-24	2.5	6.1	8.6	44,500	382700	X	111250 271450
	70-3	2.0	8.2	10.2	73,900	753780	* →	147800 405980
	70-2	3.3	6.6	9.9	76,100	753390	□ →	251130 502260
	70-4	3.6	6.7	10.3	97,200	100600	x →	349920 651240
3910	65-24	1.8	5.7	7.5	34,290	25775	X	61722 195453
	70-1	3.0	5.7	8.7	52,500	456750	X	157500 299250
	65-4	5.3	8.8	14.1	72,350	102035	✓ →	383455 636680
	70-3	3.7	6.8	10.5	18,090	189945	x →	66933 123012
	70-2	2.0	3.9	5.9	92,700	546930	X	185400 361530
	70-16	2.3	5.5	7.8	70,500	549900	X	162150 387750
	70-5	3.0	7.8	10.8	28,600	308880	✓ →	85900 223080
	65-5A	4.8	5.8	10.6	132,170	1454002	✓ →	658410 795586
	70-14	6.3	7.2	13.5	21,850	294975	✓ →	137655 157320
3870	66-32	3.6	3.9	7.5	107,800	808500	X	388080 420420
	70-5	3.3	6.5	9.8	8,160	79968	□ →	26928 53040
	70-1	2.8	6.4	9.2				
	65-4	3.7	6.0	9.7				
	70-16	2.7	6.5	9.2	88,200	811440	X	238140 573300
	66-15	5.5	6.4	11.9	64,800	771120	✓ →	356400 414720
	70-2	2.0	3.1	5.1	41,800	211318	X	83600 129580
	65-5A	6.0	6.7	12.7	6800	86360	✓ →	40800 45560
	70-14	5.2	8.6	13.8	28,600	394680	✓ →	148720 245960
	66-23	5.6	9.1	14.7	5,300	77910	✓ →	29680 48230
3830	65-11	7.3	8.9	16.2	72,300	1171260	✓ →	527790 643470
	66-15	4.0	5.4	9.4	84,400	793360	□ →	337600 455760
	70-6	4.0	6.2	10.2	134,100	1367820	* →	536400 831420
	70-14	4.9	7.9	12.7	103,300	1311910	✓ →	506170 816070
RAMP:	66-15	4.0	5.4	9.4	38,200	359080	✓ →	152800 206280
	65-5A	4.9	5.7	10.6	57,200	606320	✓ →	280280 326040
	70-16	6.8	12.4	19.2	36,000	691200	✓ →	244800 444640
	70-5	4.3	5.9	10.2	22,300	227460	✓ →	95840 131570
	66-32	2.4	5.0	7.4	6,400	47360	✓ →	15360 32000

Pb }
3.63 }
Zn }
6.30 }
Ph I
+ Zn
at
end of
year.

LG totals:
162502
3354633
X LGSP?
655,900T
(655890)
Pb: 2.48%
Zn: 5.11%

7.59%
combined.

① 701,170	① 882,252	① 561,947	① 895,091	→ 528,237	① 849,518
② 816,460	② 1,083,337	② 440%	② 7.02%	4432	② 7132
③ 102,446	③ 121,543	③ 1142	③ 11.562		
④ 19,120	④ 137,915	④ 1457,095			
⑤ 175,620	⑤ 147,154				

166760
1024460
1191220

19m PHASE 2

$7300 \text{ Tono} = 11.52\% \text{ Pb} + 2m.$

	Pb	Zn	Carb.	Tono	Carb./Tono			
2990	708	29	7.6	10.5	55,07	577,678	X	→ 159,549 418,129
	66-39	28	6.6	9.4	53,509	502,985	X	
2950	70-3	20	8.2	10.2	47,500	484,500	X	→ 95,000 389,500
	70-9	3.3	5.7	9.0	61,000	549,000	X	
	70-11	2.2	7.5	9.7	53,500	518,950	□	→ 117,700 401,250
	66-14	4.3	5.9	10.2	83,700	853,740	X	→ 359,910 493,830
	66-39	3.4	9.5	12.9	52,800	681,120	X	→ 179,520 501,600
3910	70-3	3.7	6.8	10.5	81,400	854,700	X	→ 301,180 553,520
	70-4	3.4	6.2	9.6	61,800	593,280	X	
	70-9	4.1	6.0	10.1	54,300	548,430	□	→ 226,630 325,800
	70-15	6.3	7.2	13.5	39,200	509,200	X	→ 246,960 282,240
	65-5A	6.8	5.8	10.6	57,300	607,380	X	→ 275,040 332,340
	65-4	5.3	8.8	14.1	36,900	520,290	X	→ 195,570 324,720
	66-14	3.4	7.4	10.8	83,700	903,960	X	→ 284,580 619,380
	70-11	1.0	3.6	4.6				
3870	70-1	2.8	6.6	9.4	27,100	254,740	X	
	65-4	3.7	6.2	9.9	91,200	902,880	□	→ 337,440 565,440
	70-3	4.6	9.2	13.8	126,000	1,738,800	X	→ 579,600 1,159,200
	66-14	2.6	3.7	6.3				
	70-2	2.0	3.1	5.1				
	70-4	2.2	4.2	6.4				
	65-5A	6.0	6.7	12.7	54,300	689,610	X	→ 325,800 363,810
	70-14	5.2	8.6	13.8	52,000	717,600	X	→ 270,400 447,200
	70-15	5.2	8.6	13.8				
	66-23	5.6	9.1	14.7	7,500	110,250	X	→ 42,000 68,250

X 26SP?
203,400T

- ① 777,317 ② 926,8828 (119) 3992879 7246209.
- ② 922,817 ③ 10720138 (116) -7.09% 7.42%.
- ③ 976,317 ④ 11239088 (1157)

859,300T

1971 → end of year

2950

66-15	4.0	7.1	48,750	19500	34612
70-4	3.6	6.7	23,370	8413	15658
70-2	3.7	6.6	27,890	9204	18407

3900

66-15	6.4	6.7	48,970	21547	32810
65-5A	4.8	5.8	29,390	14107	17046
70-14	6.7	7.2	51,900	32697	37368
70-7	6.7	8.2	27,700	15561	20254

3870

66-23	5.6	9.1	26,600	14784	24024
66-12	3.1	5.5	24,100	7471	13255
70-7	9.0	11.8	48,750	43878	57525
70-6	4.8	7.9	8,500	6090	6715
70-14	5.2	8.5	48,240	25084	41004

Balance ex 3870

6.9	6.5	103,700 116,200	61838	82030
-----	-----	-------------------------------	-------	-------

HGSP

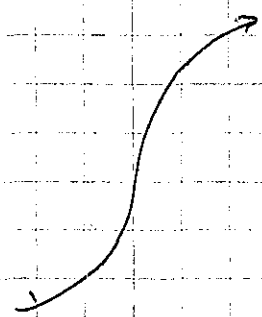
4.6	6.2	63,300	29118	39246
-----	-----	--------	-------	-------

LGSP

2.8	3.5	95,540	26571	33439
709,000			333850	473393
			4.7	6.7

11.4.

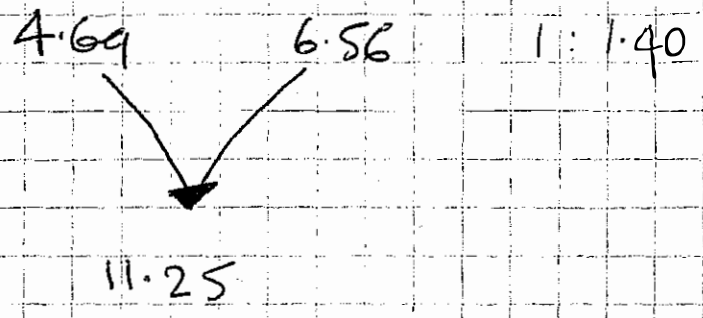
inquire 709,000



Actual grade expansion 1.0 from Mill Feed Tr 4)

Jan	212724	4.7	6.6	997864	1399624
Feb	200290	6.5	6.5	911180	1301222
Mar	213939	4.7	6.9	1004843	1475222
Apr	212942	4.90	7.24	1044254	1542167
May	216131	4.67	7.07	1008579	1528422
Jun	213598	3.98	5.96	849398	1272378
Jul	227655	4.70	6.06	1090642	1378734
Aug	221485	4.41	6.32	1088247	1399922
Sep	228676	4.97	6.48	1135908	1483089
	<u>1947440</u>			<u>9130915</u>	<u>1278078</u>

310,660 diff



Calc Mill Hrs 4.86 6.72 1: 1.38

MINED JAN - SEP 1971

3990

		Rdy 1	Rdy 2	Avgc Th	Tons	Pb	Zn	Tons x Pb	Tons x Zn
66-44	W	0.002	0.005	0.002	40				
	E	0.049	0.100	0.050	40	36,700	5.7	6.8	20919 24956
66-24		0.012	0.022	0.011	40	7,800	2.7	5.4	2106 4212
70-5		0.076	0.150	0.075	40	53,000	2.3	4.4	12190 23320
70-16		0.030	0.059	0.029	40	20,500	3.8	7.6	7790 15580

3950

65-11	1	0.042	0.084	0.042	5				
	2	0.160	0.320	0.160	40	116,800	4.7	5.6	54896 65408
66-25	1	0.015	0.031	0.015	5				
	2	0.023	0.046	0.023	40	17,600	3.5	4.9	6160 8624
66-32		0.164	0.328	0.164	40	115,900	4.1	5.8	47519 67222
70-5		0.097	0.196	0.098	40	69,200	4.5	6.5	31140 44980
66-15		0.214	0.422	0.211	40	149,100	4.0	7.1	59640 105861
66-16	1	0.292	0.583	0.291	5				
	2	0.108	0.215	0.107	40	101,300	5.9	8.2	59767 83066
66-20	1	0.094	0.191	0.095	5				
	2	0.230	0.458	0.229	40	170,200	6.3	8.7	107226 148074
66-44	1	0.067	0.135	0.067	5				
	2	0.052	0.102	0.051	40	42,000	3.8	5.1	15960 21420

3910

66-44		0.183	0.373	0.186	40	131,400	7.3	8.6	95922 113004
65-11		0.210	0.419	0.209	40	147,700	6.4	5.2	94528 76804
66-32		0.062	0.124	0.062	40	43,800	4.0	7.8	17520 34164
70-5		0.021	0.043	0.021	40	14,800	3.0	7.8	4440 11544
66-15		0.146	0.290	0.145	40	102,500	4.4	6.7	45100 68675
70-7		0.099	0.199	0.099	40	70,000	6.3	8.2	44100 57400
70-6		0.136	0.274	0.137	40	96,800	5.2	7.3	50336 70664
66-16		0.268	0.539	0.269	40	190,100	7.0	8.9	133070 169189
66-12		0.311	0.621	0.310	40	219,100	6.8	9.7	148988 212527

3870

	Uglt	Pb ₂	avg	Th	Tons	Pb	Zn	Tons x Pb	Tons x Zn
66-44	0.054	0.100	0.055	10	9,700	8.0	10.7	7760	10379
65-11	1 0.095	0.184	0.092	10	16,200				
	2 0.139	0.280	0.140	40	48,900	6.7	7.4	17117	85174
70-6	0.173	0.348	0.174	40	22,000 ^{123,000}	4.8	7.9	59040	97170
66-12	0.130	0.267	0.133	40	94,000	3.1	5.5	29140	51700
					2,258,100			1232374	1671117

5.46 7.40 1 : 1.35



12.86