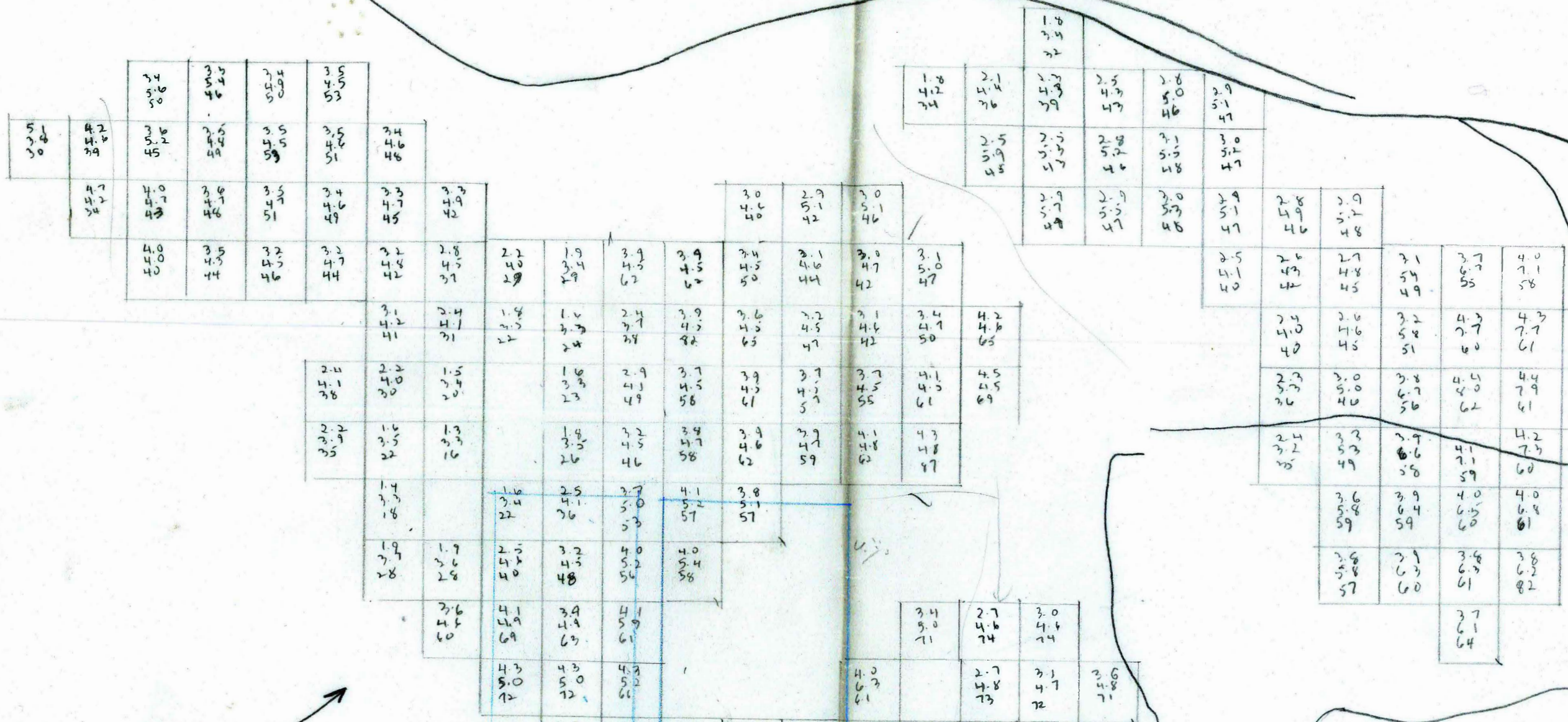


16,500 E

6000N



5500N

DEVELOPED	OR	S.O.T	g./pb	g./zn
CFSE ZUL	19000	3.1	5.1	
CFSE ZUL				
3830 U <sub>2</sub>	32,000	3.3	5.8	
3810 B <sub>2</sub>	116,600	3.4	4.4	
C <sub>2</sub>	64,000	3.4	5.1	

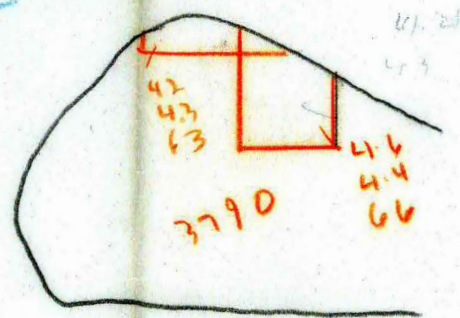
~~DEVELOPED ORE~~ according to MINE MODEL

3810 809,881 S.O.T  
 g./pb 3.4  
 g./zn 5.1  
 gm/mt Ag

6 gm/mt Ag - 93

6 gm/mt Ag - 54

TOTAL 816,861 S.O.T  
 g./pb 3.4  
 g./zn 5.1  
 gm/mt Ag 73



according to Mine Model  
 3810 B<sub>2</sub> - 54,548 S.O.T 4.3 g./pb  
 6.8 g./zn  
 57 gm/mt Ag

C<sub>2</sub> - 20,743 S.O.T 3.6 g./pb  
 4.8 g./zn  
 53 gm/mt Ag

16,500 E