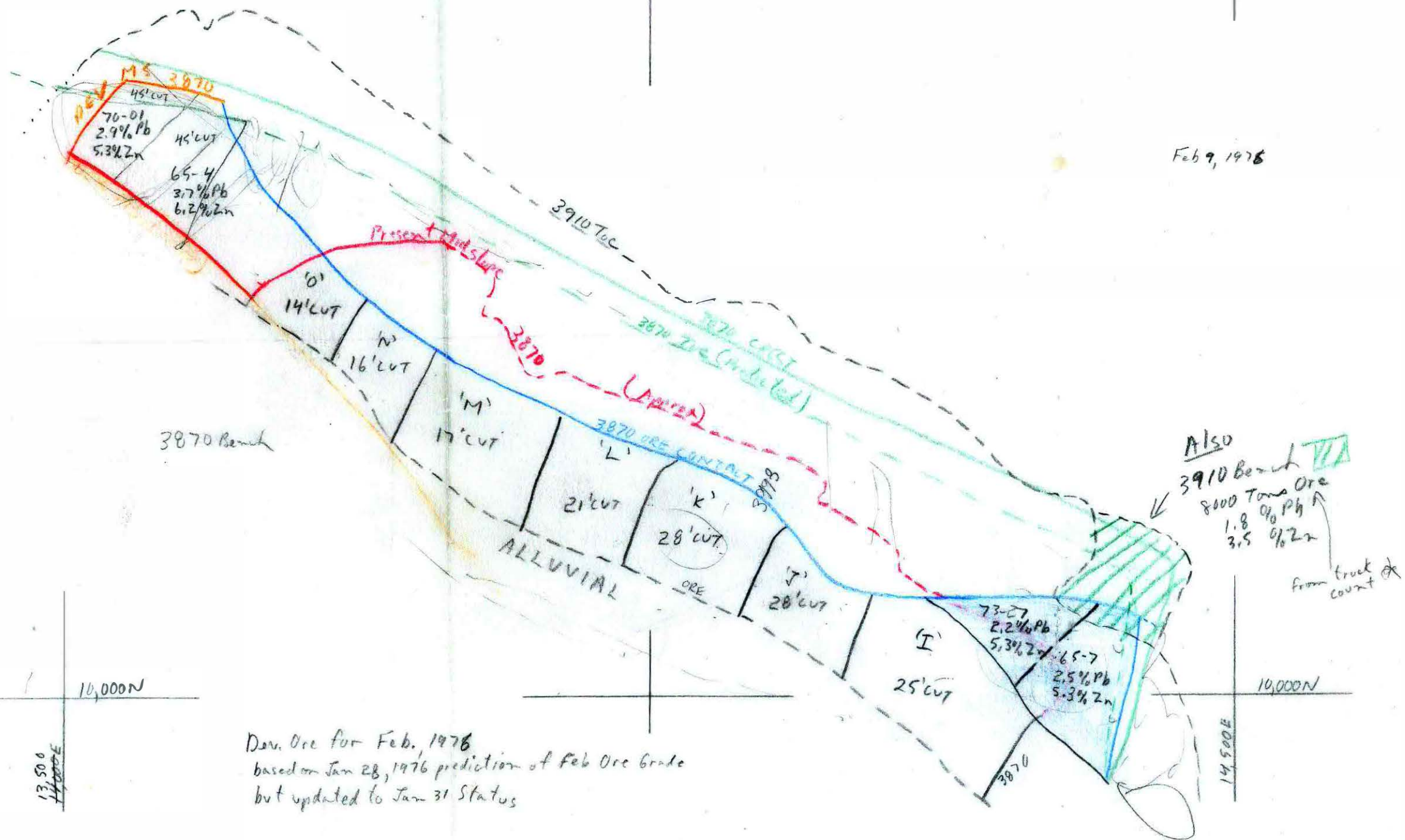


Feb 9, 1976



3870 Bench

ALSO  
 3910 Bench  
 8000 Tons Ore  
 1.8% Pb  
 3.5% Zn  
 from truck count

Dev. Ore for Feb. 1976  
 based on Jan 28, 1976 prediction of Feb Ore Grade  
 but updated to Jan 31 Status

13,500  
14,000E

14,000E

002602