

7. 4. 71

sect B
(GWB-39)

65-1

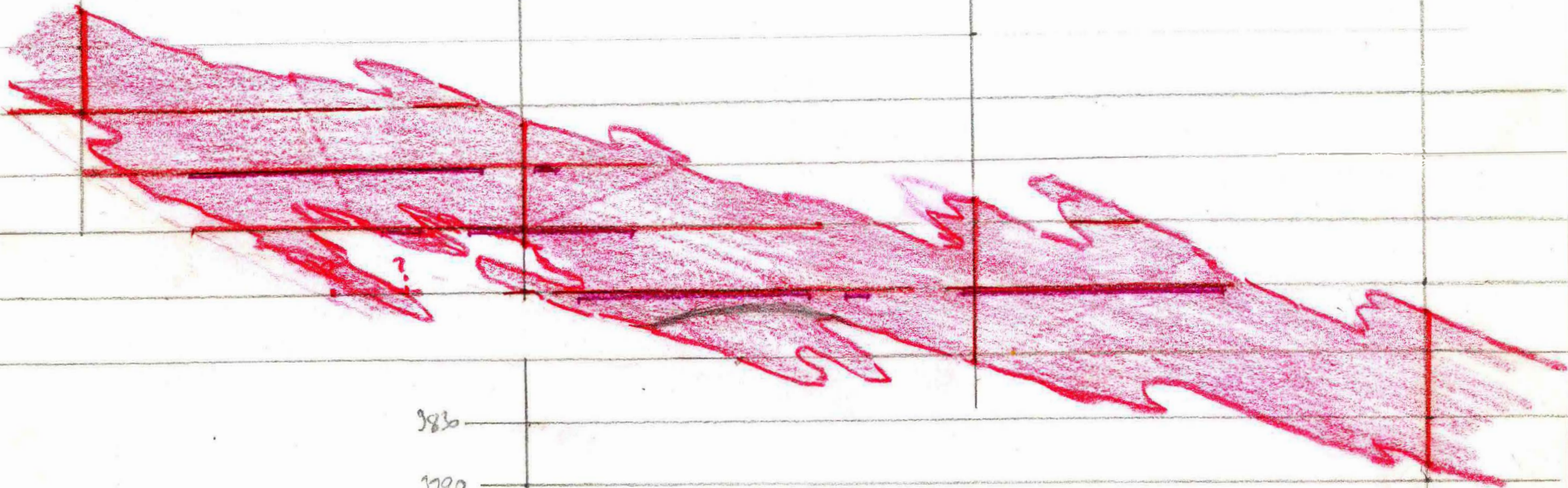
Sec 9

66-20

66-12

66-13

4030
3990
3950
3910
3870



3830

3790

002874

66-1

sec 9.

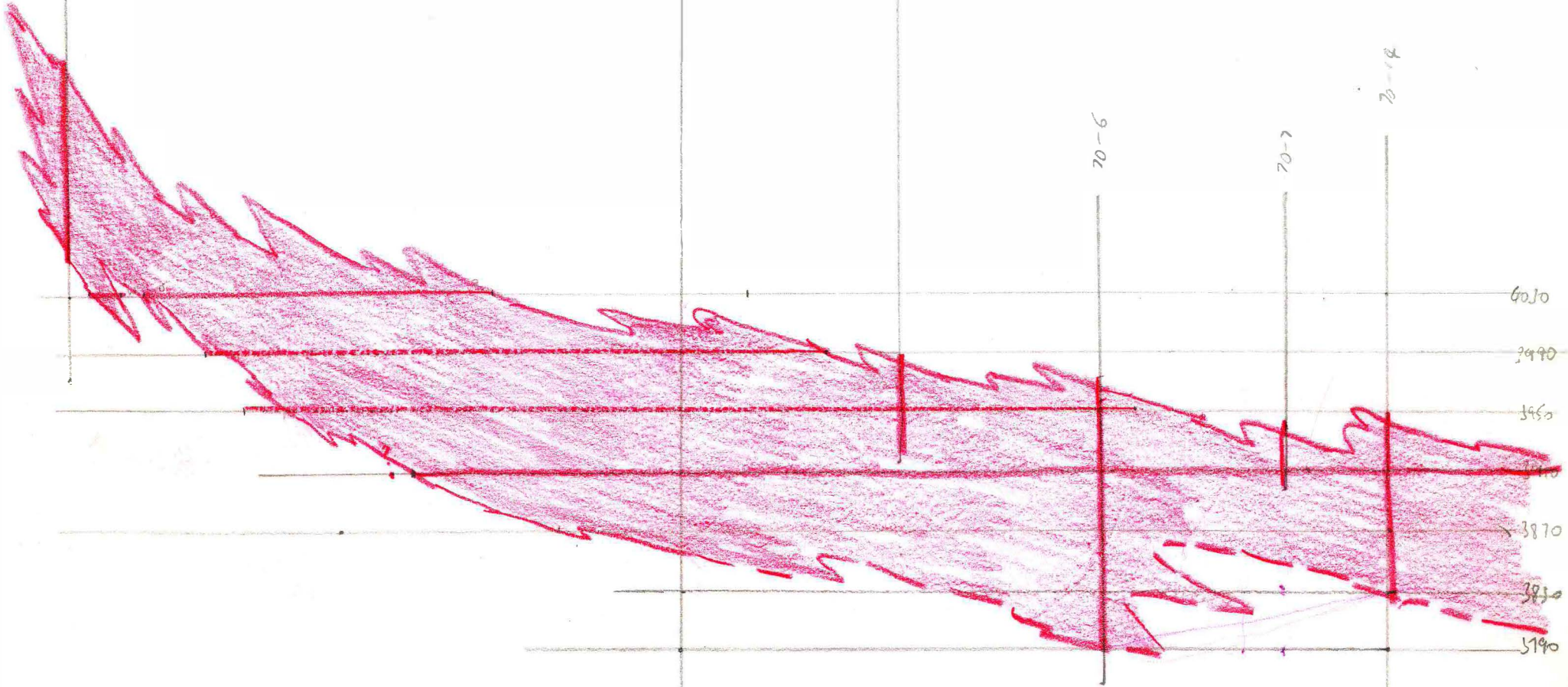
66-16

sect 8'
FWB-65

70-6

70-7

70-14



67-34

sect c
(6WB-42)

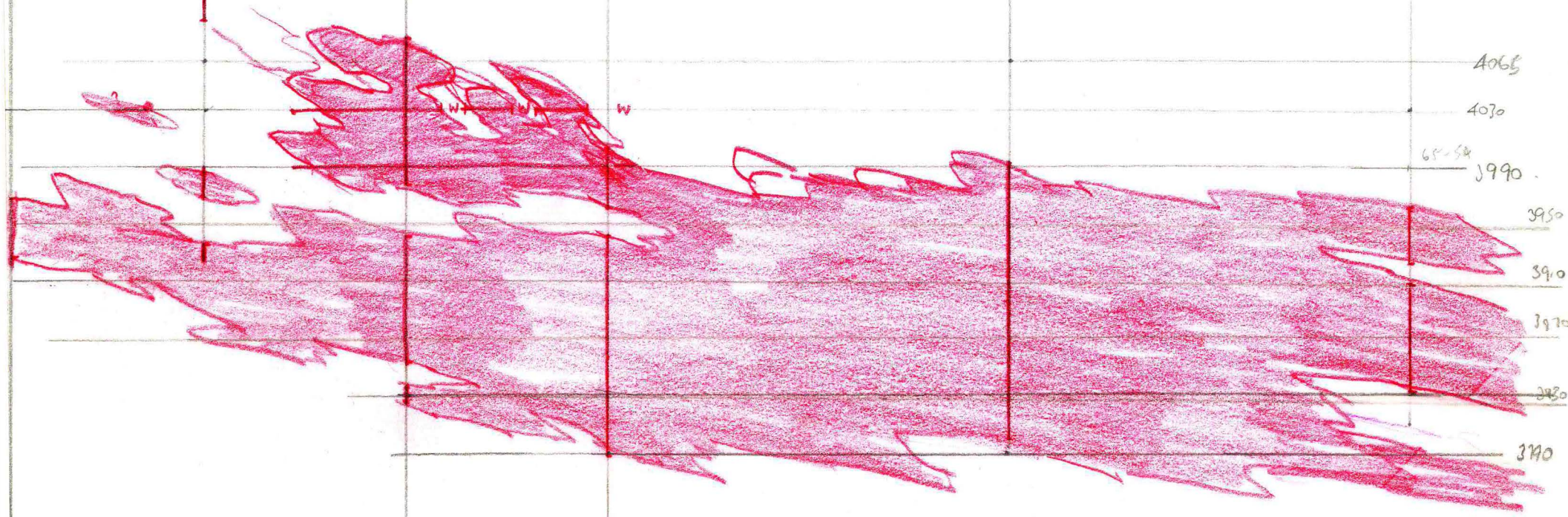
66-25

66-44

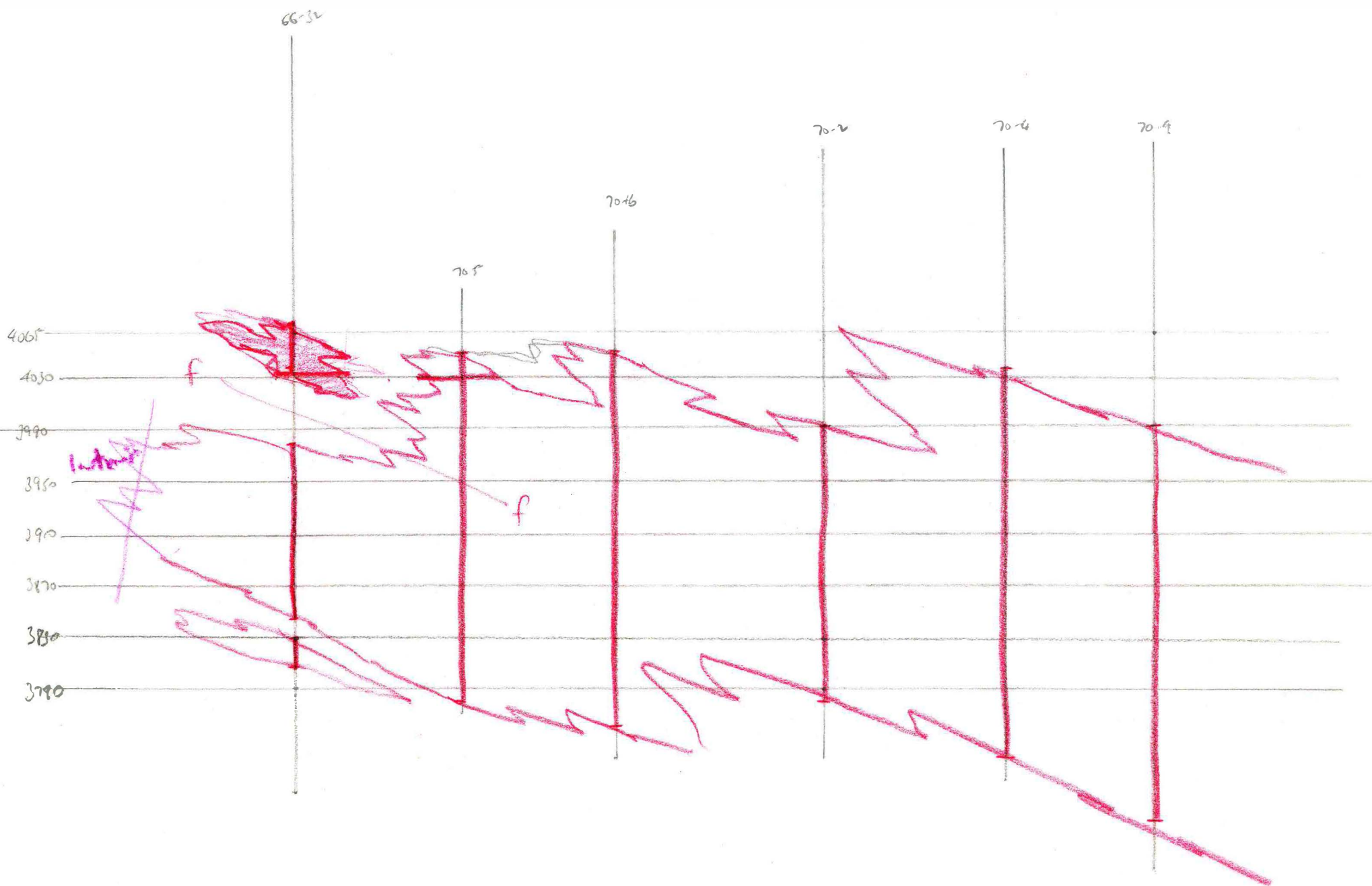
65-11

66-15

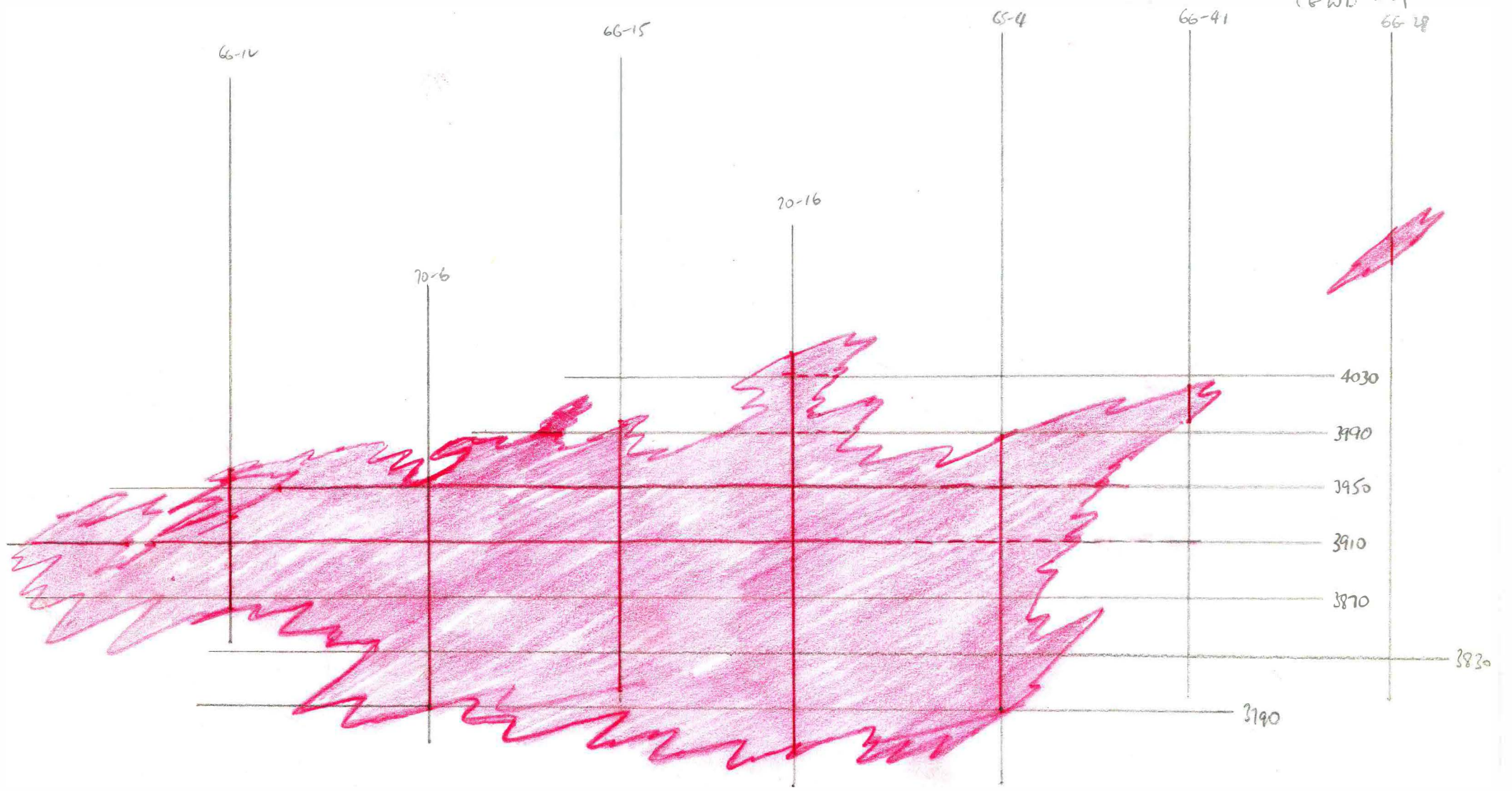
66-5A



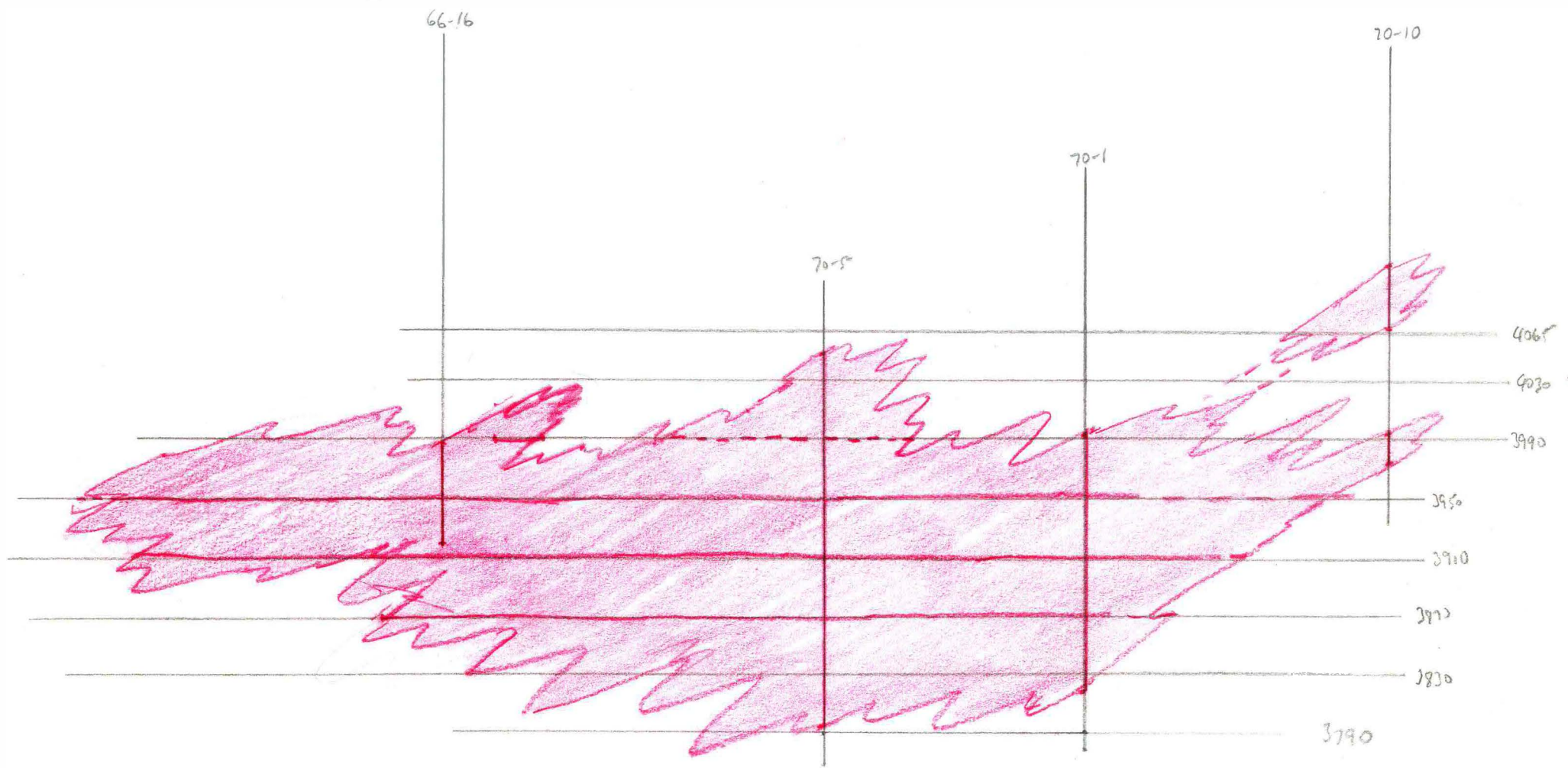
Sect C'
(GFB-7004)



Sect 8.
CGWB - 29
66-28



Set 8.5
(GWB-62)



Sect 9
CGWB-30

66-20

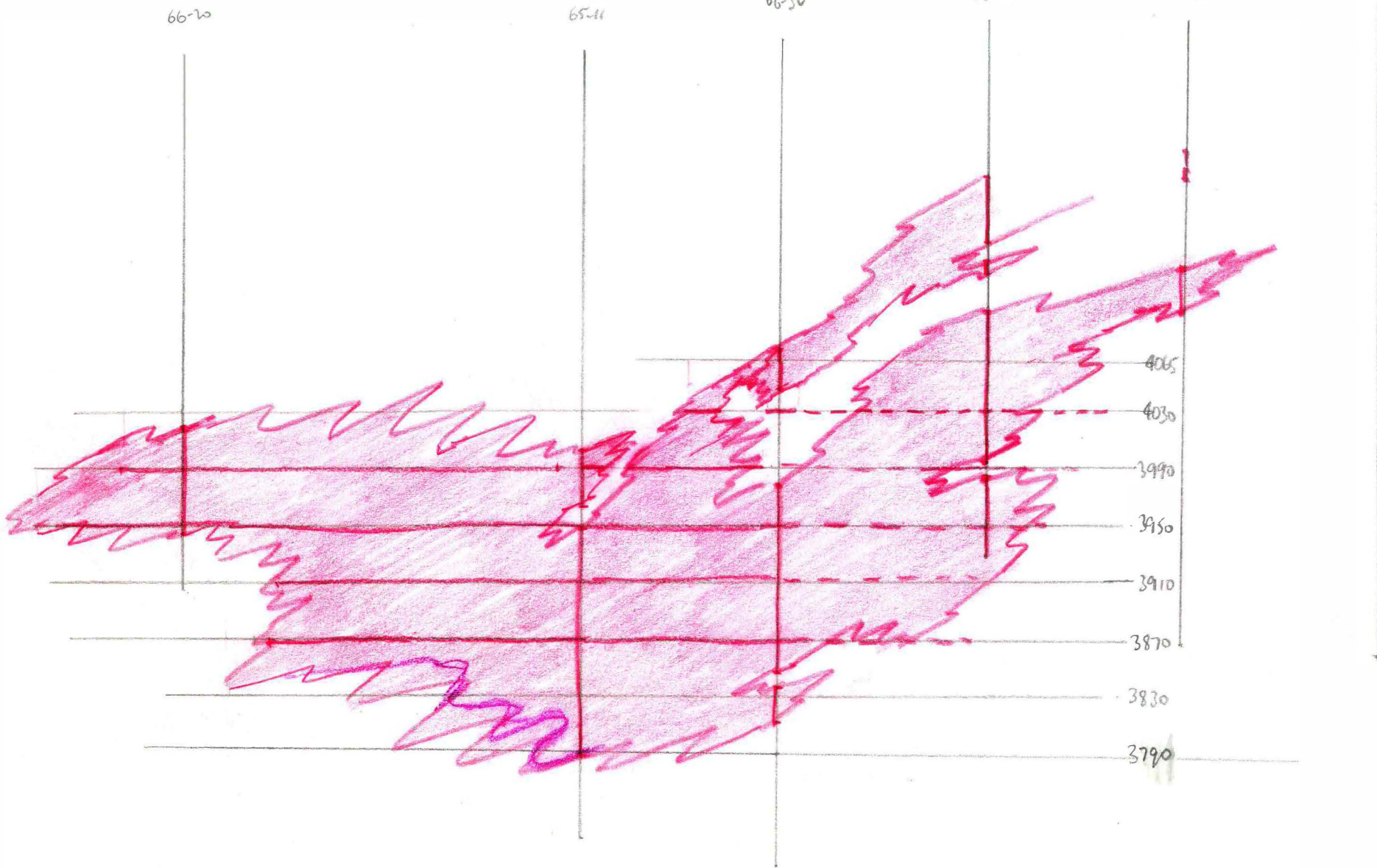
65-11

66-32

66-29

66-32

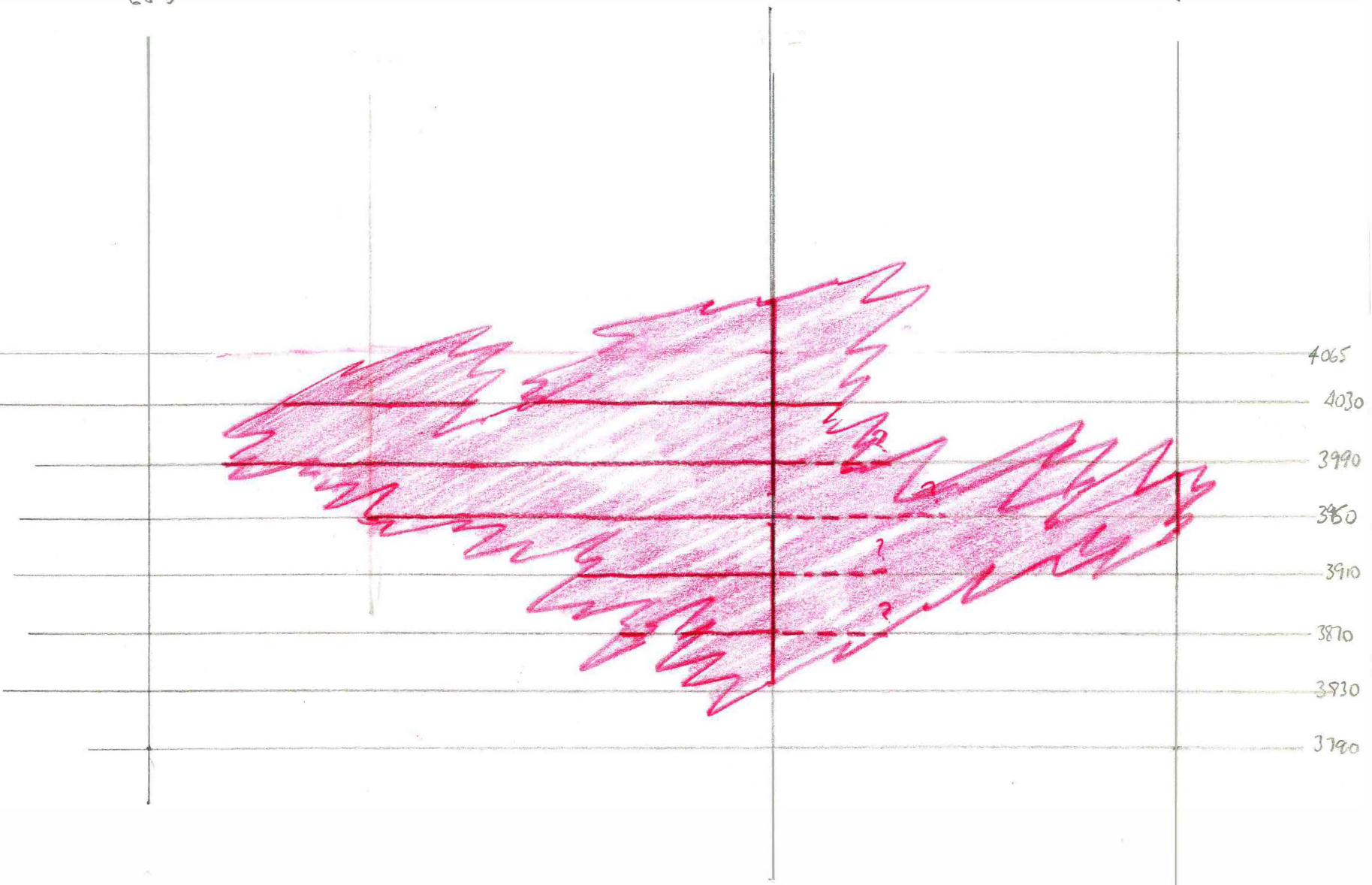
66-36



sect 9.5
(WB-63)

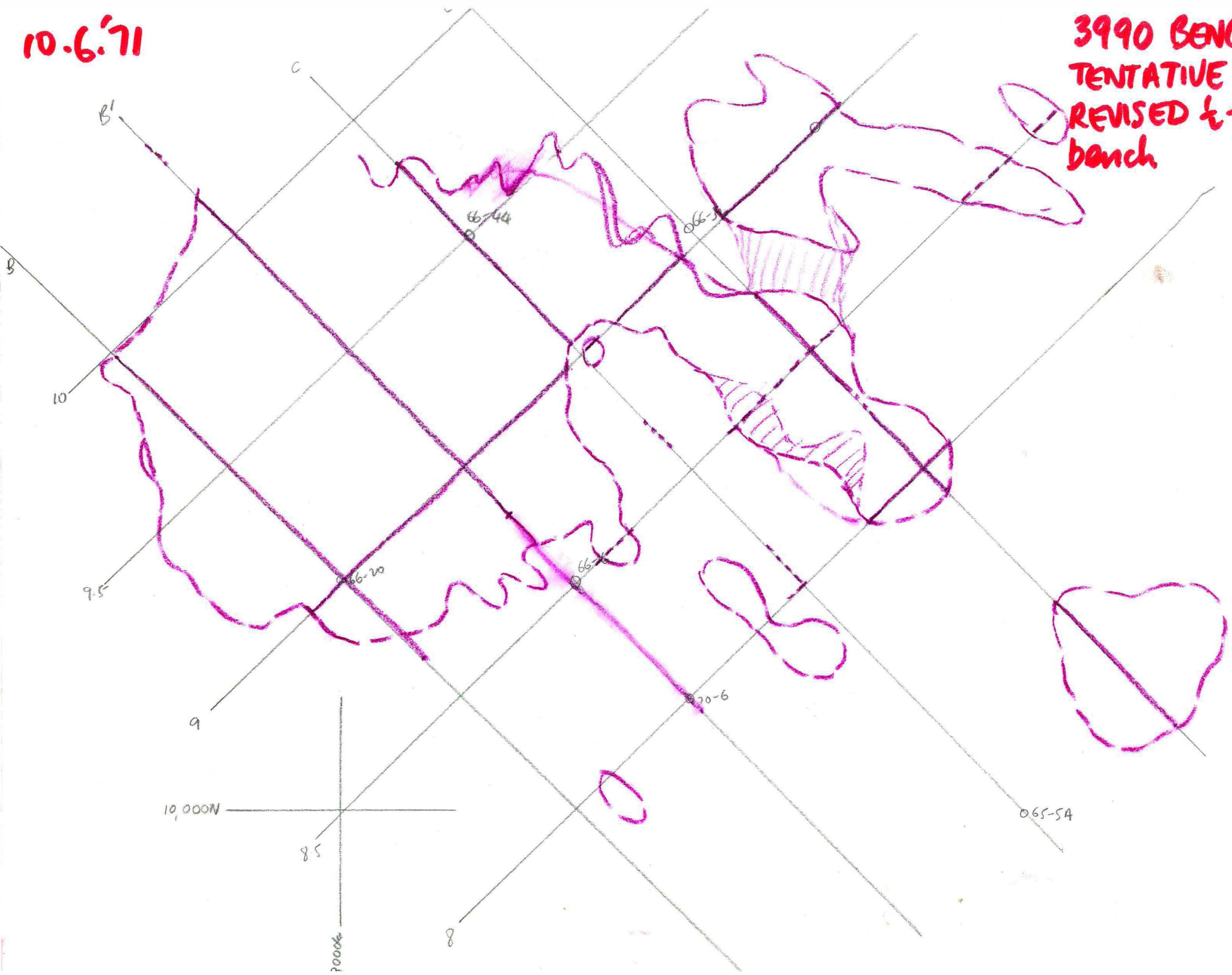
66-43

66-44



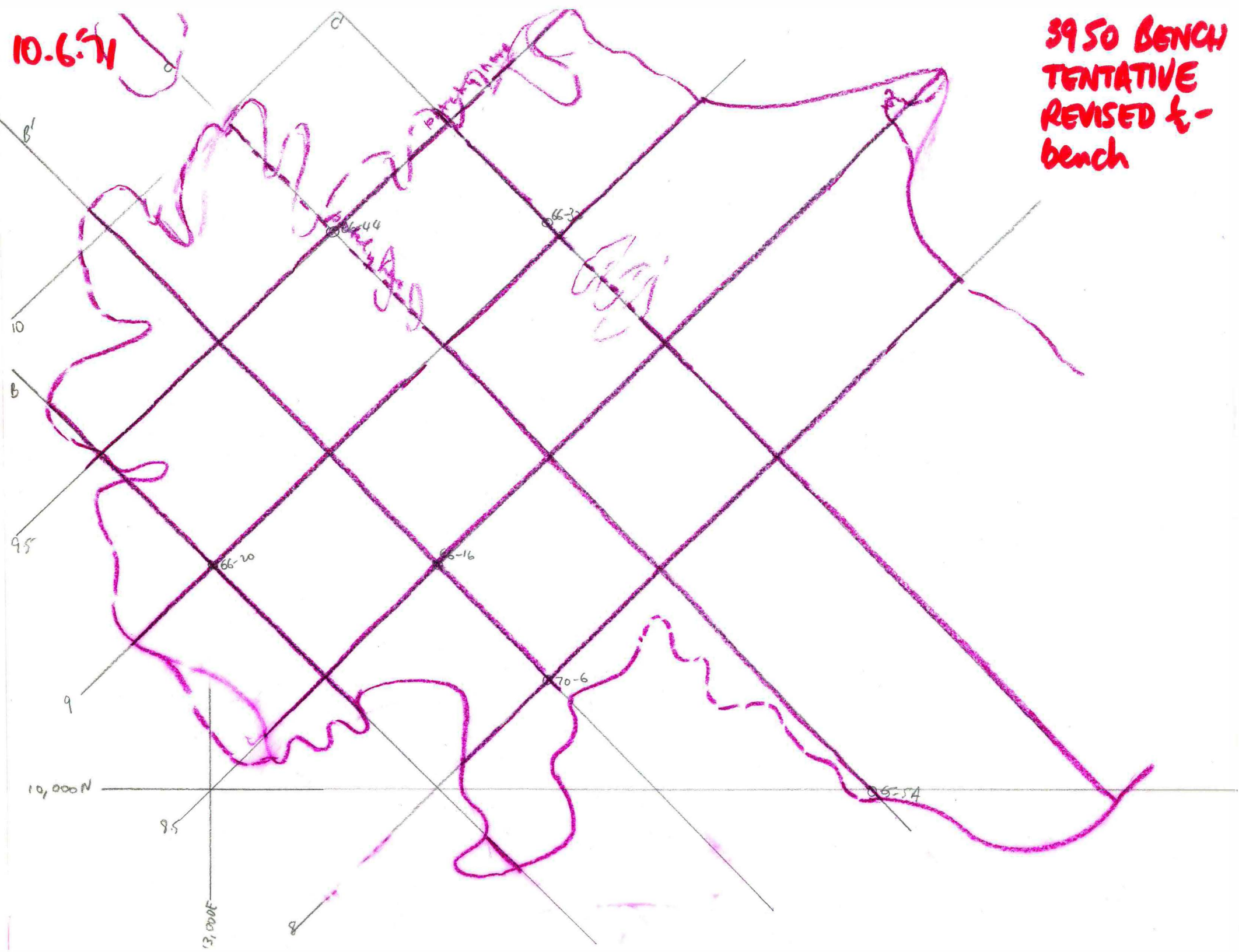
10.6.71

3990 BENCH
TENTATIVE
REVISED 1/2-
bench



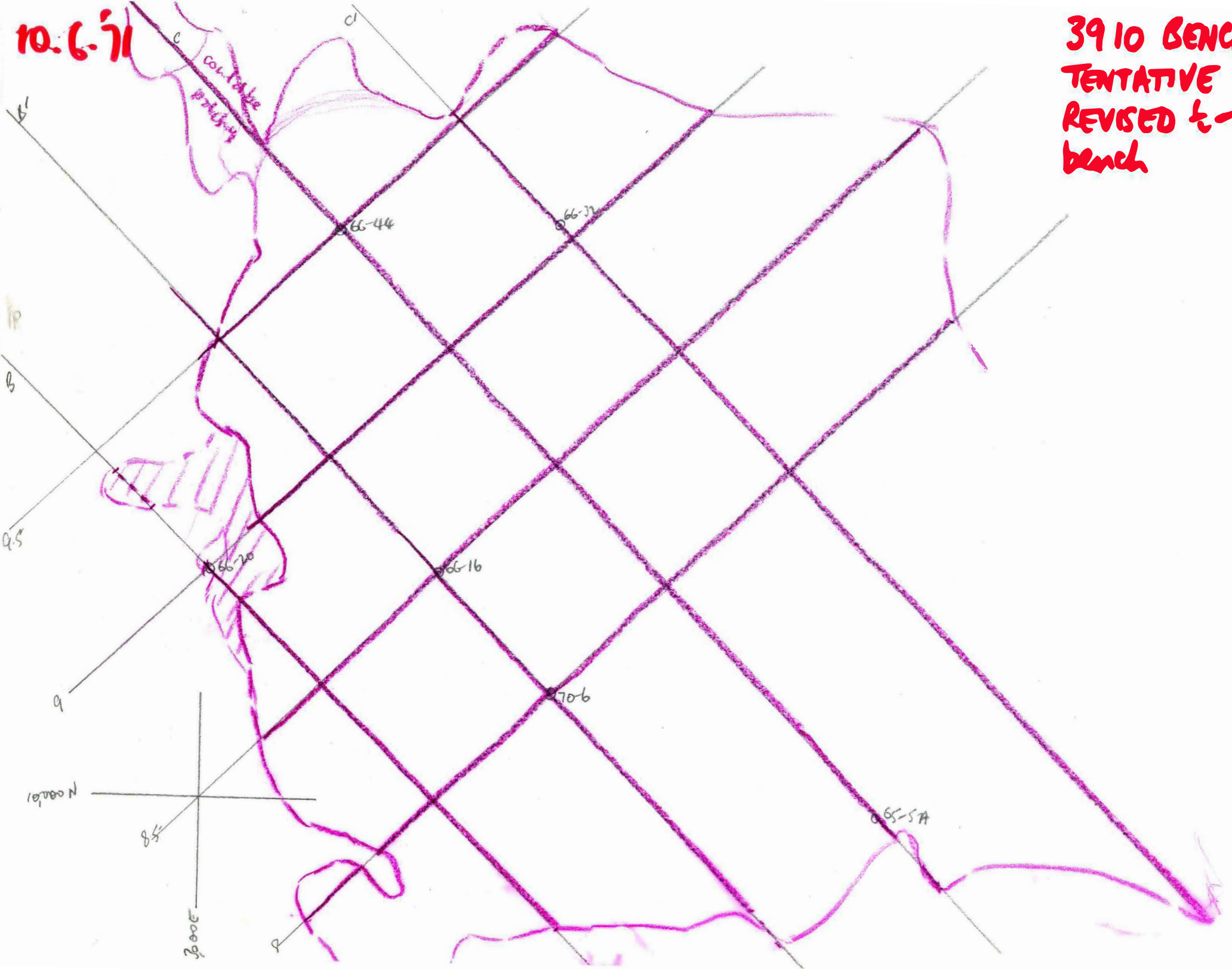
10.6.71

3950 BENCH
TENTATIVE
REVISED 1/2-
bench



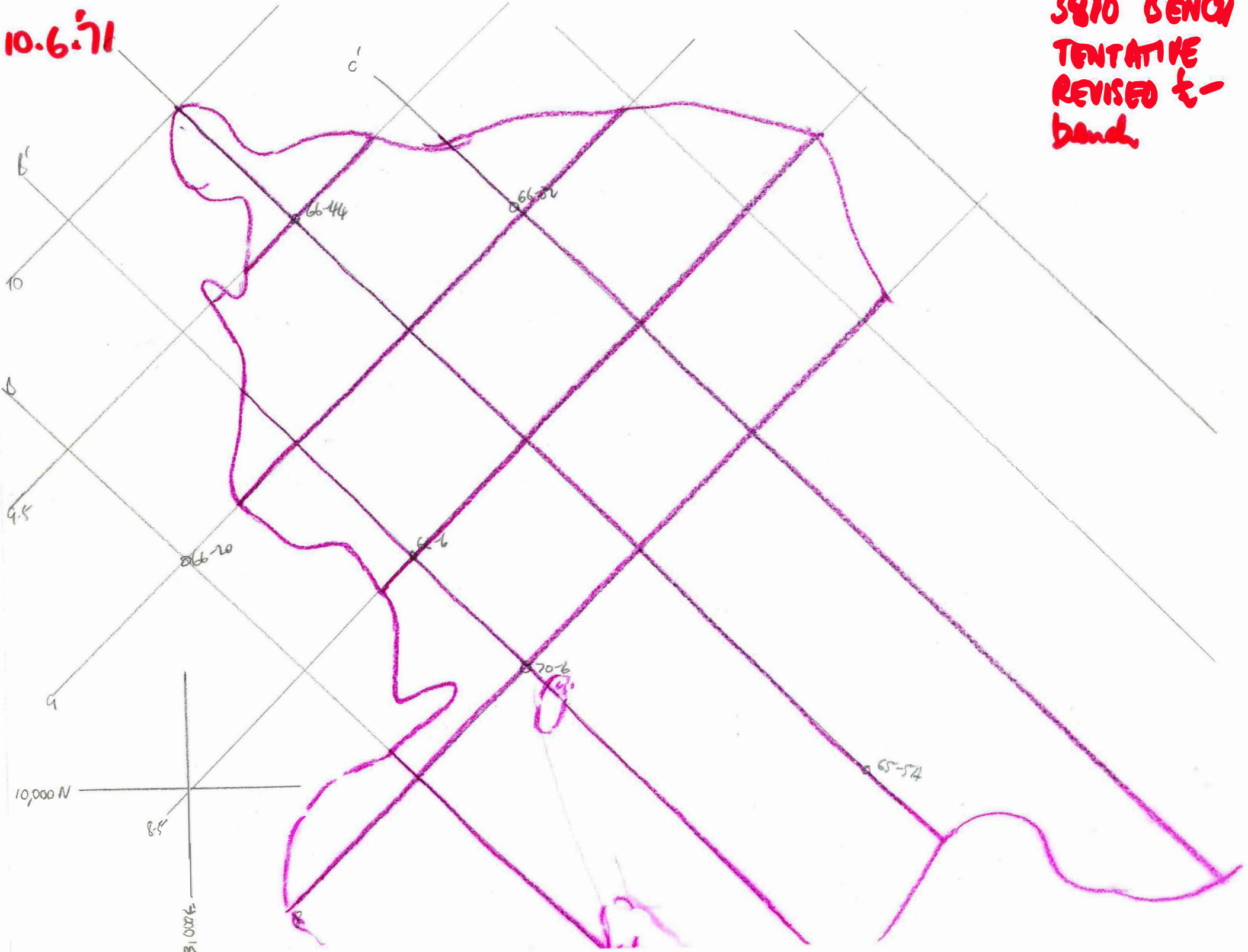
10.6.71

39 10 BENCH
TENTATIVE
REVISED 1/2-
bench

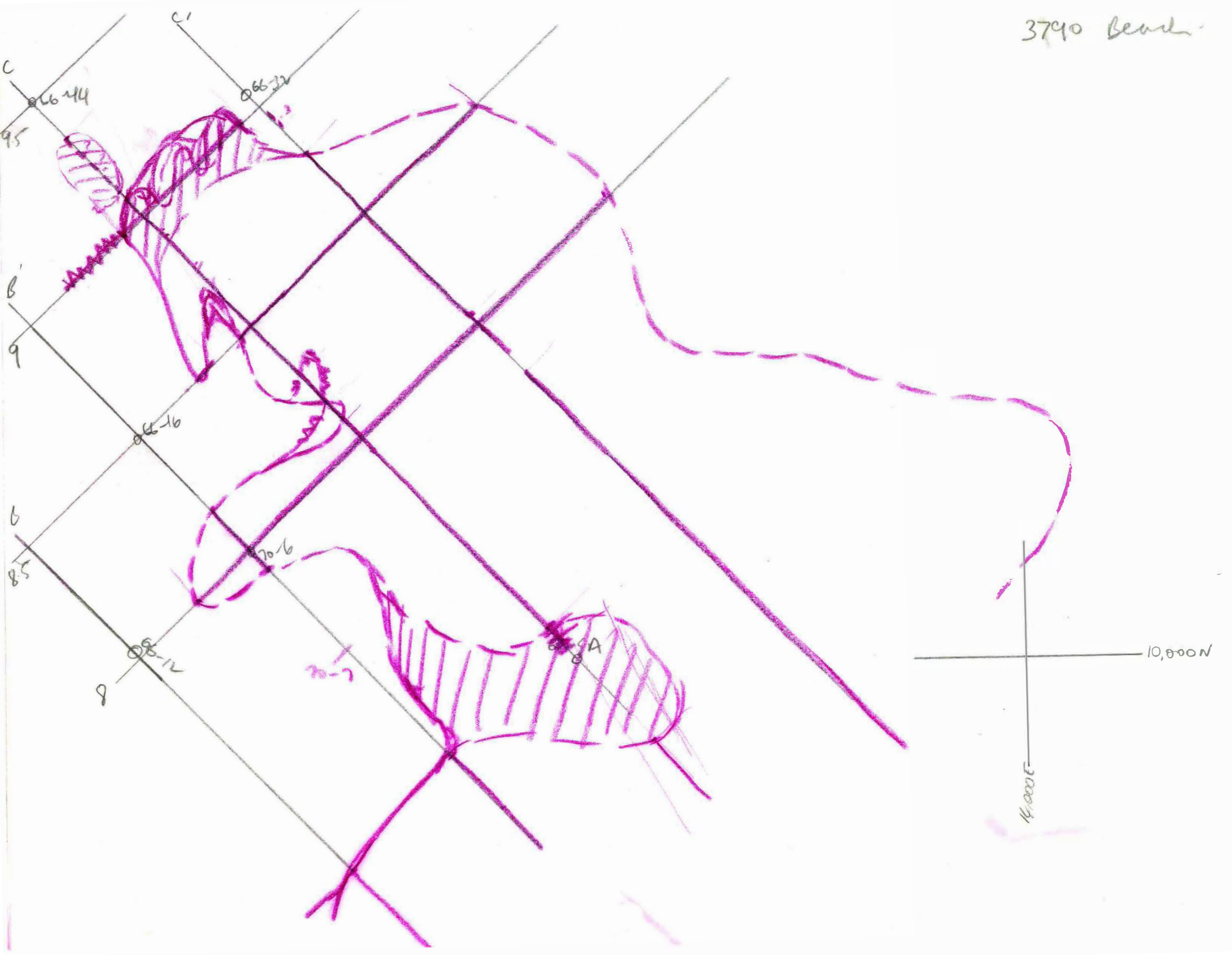


10.6.71

3870 BENCH
TENTATIVE
REVISED E-
bench

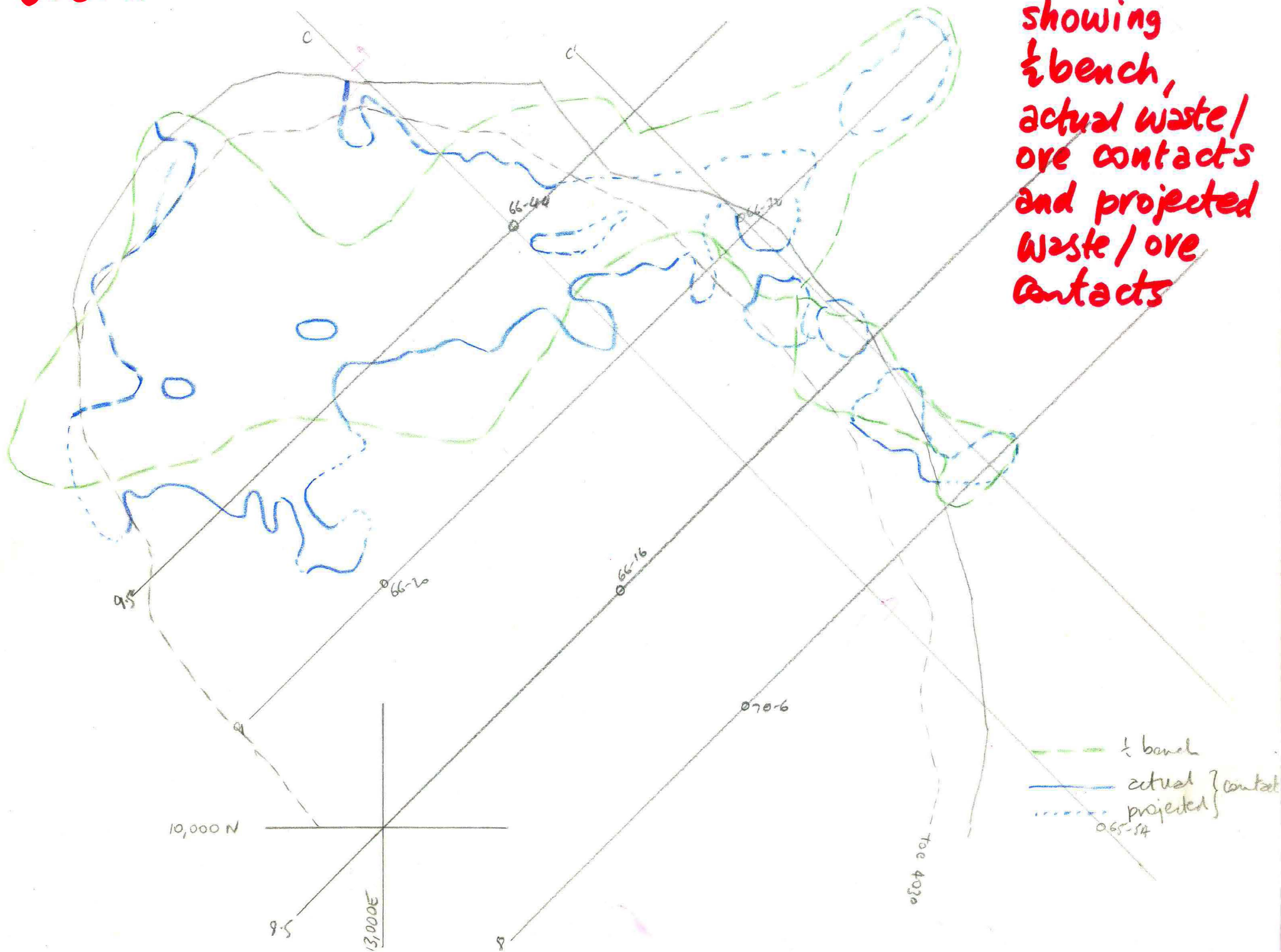


3790 Bend.



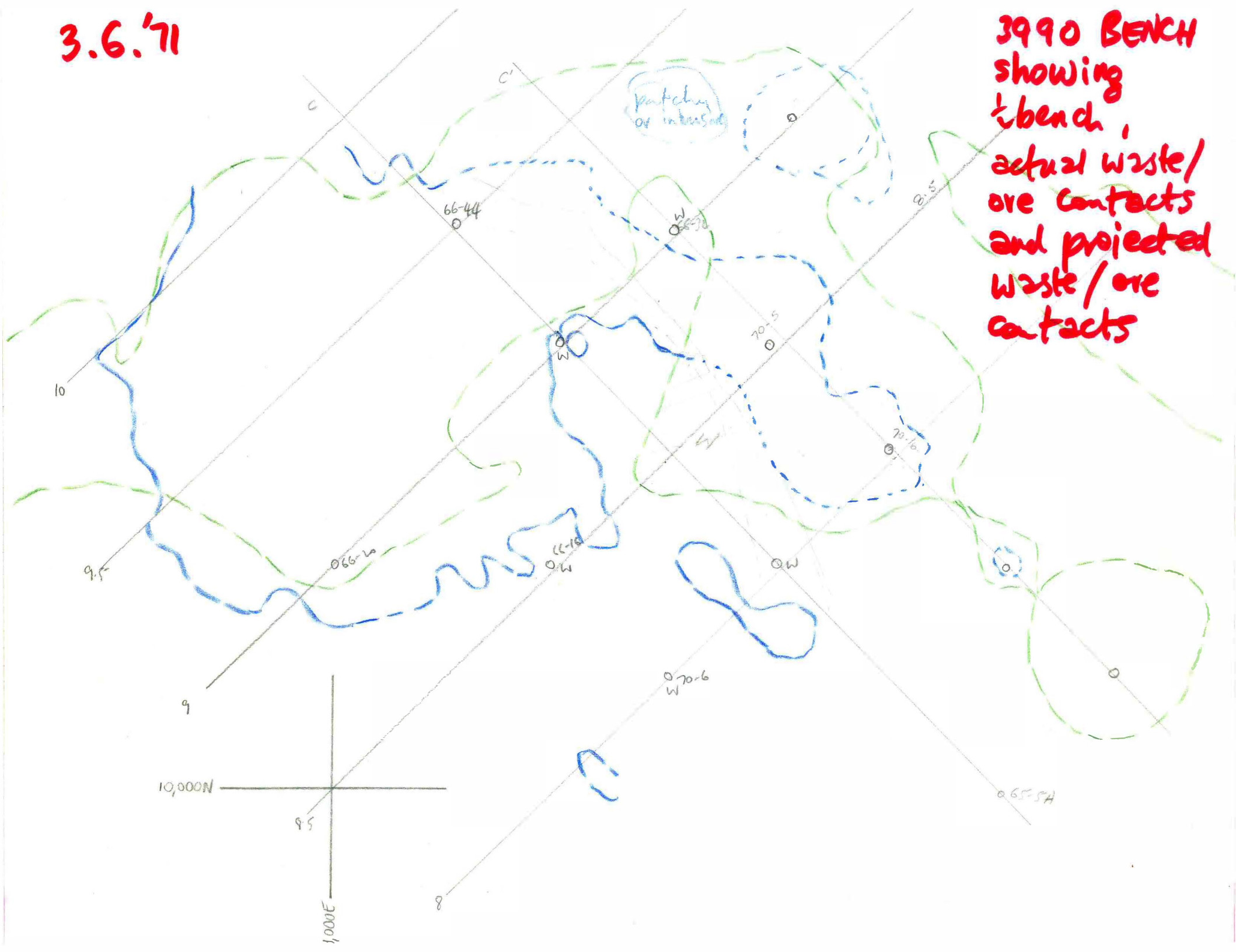
3.6.71

4030 BENCH
showing
½ bench,
actual waste/
ore contacts
and projected
waste/ore
contacts



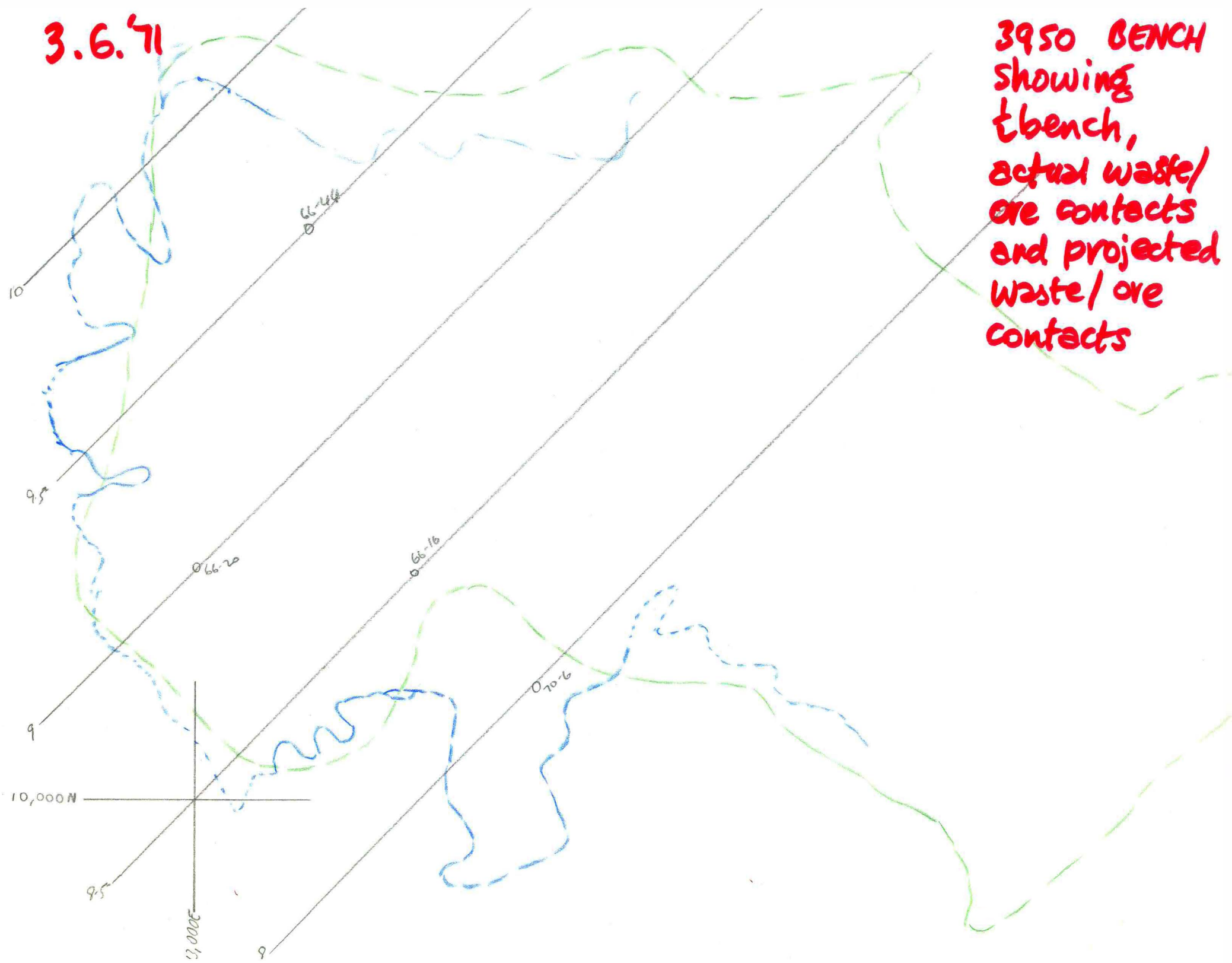
3.6.71

3990 BENCH
showing
bench,
actual waste/
ore contacts
and projected
waste/ore
contacts



3.6.71

3950 BENCH
showing
t bench,
actual waste/
ore contacts
and projected
waste/ore
contacts



3.6.'71

3910 BENCH
showing
½ bench,
actual waste/
ore contacts
and projected
waste/ore
contacts

