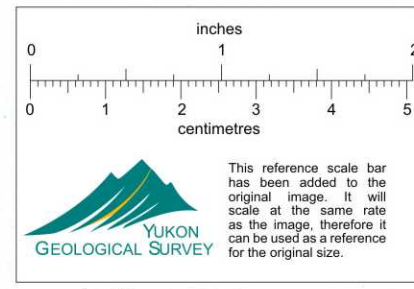


003115

U/G PILLAR  
INSPECTION

15000 E

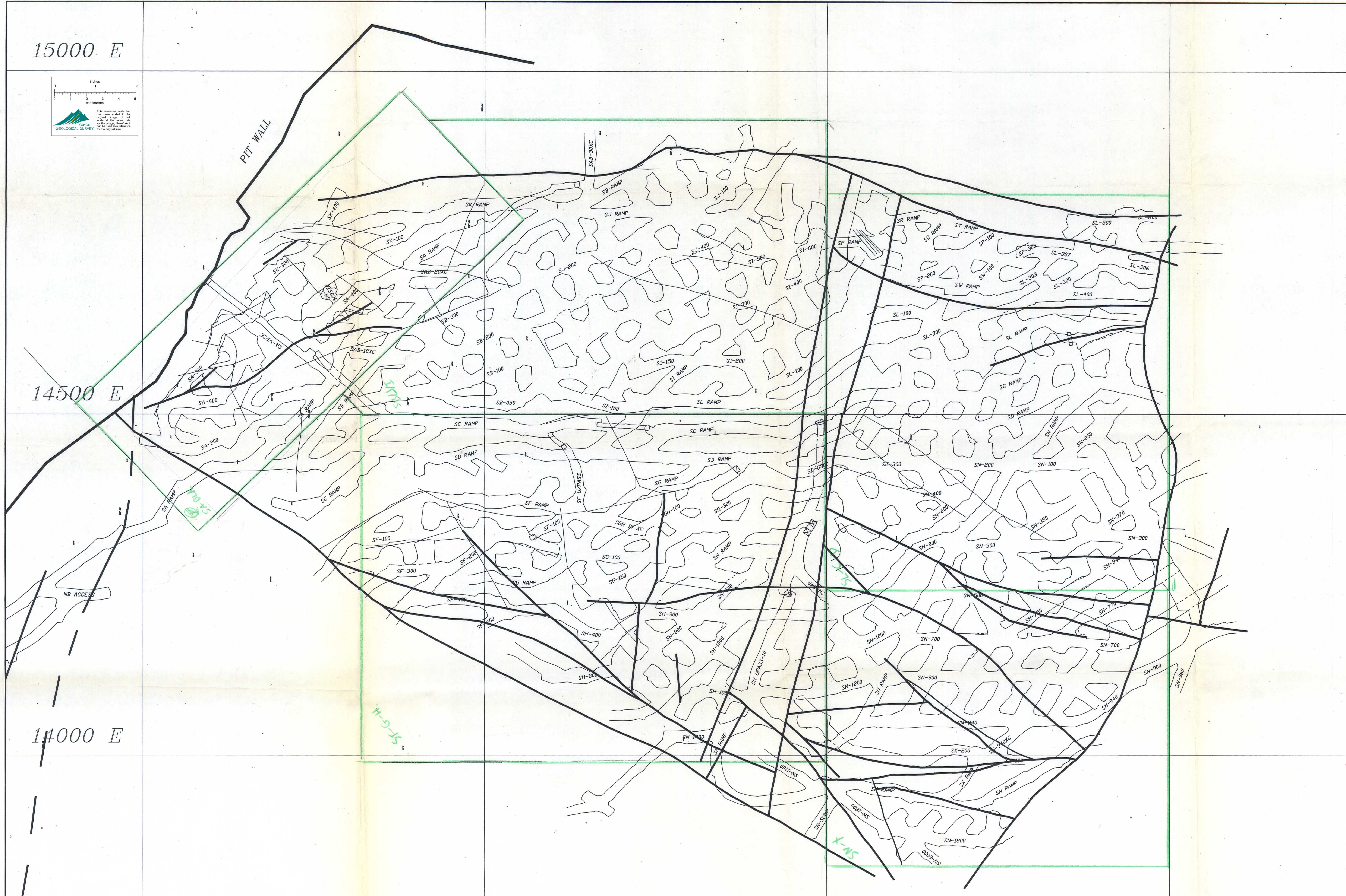


PIT WALL

14500 E

14000 E

NB ACCESS



URGENT!  AS SOON AS POSSIBLE

01535

FROM Roger MacDonaw

DEPT. U/G GEOLGY

COPY TO ART ROGERS

DATE

MARCH 1/91

SUBJECT

PIVAR INSPECTION

SEND TO Leo Hwozdyk

MESSAGE

THE FIRST PIVAR INSPECTION OF THE NORTH "A", SOUTH "B" AND SOUTH "J" STOPS WAS PERFORMED ON FEB 18/91. NO MAJOR SPALLING OR CAVING HAS OCCURRED ON EITHER THE PIVARS OR THE BACK OF THE NORTH "A" STOP. UNMARKED PIVARS WERE INSPECTED AND PAINTED. INCLUDED ARE PIVAR INSPECTION PLANS AND A LIST OF PARTICULARS FOR EACH STOP.

A CURSORY VISUAL INSPECTION WAS PERFORMED ON THE SOUTH "B" & "J" STOPS. AS THE PIVARS WERE PAINTED, ONLY ONE PIVAR SHOWED SIGNS OF OPEN FRACTURES AND POTENTIAL SLABBING (#3 ON S3/SJ PIVAR INSPECTION PLAN). SEVERAL PIVARS HAVE YET TO BE PAINTED AND SHOULD BE MARKED ONCE BENCHING IS COMPLETED.

R. MacD

4S500E - 1 ← SPEEDIMEMO →  
MOORE SPEEDIPLY - 1 - MOORE CLEAN PRINT PATENTED 1963-1966

REPLY FROM

DATE

LIFT THIS SHEET TO REMOVE  
(RETAIN FOR YOUR FOLLOW-UP)



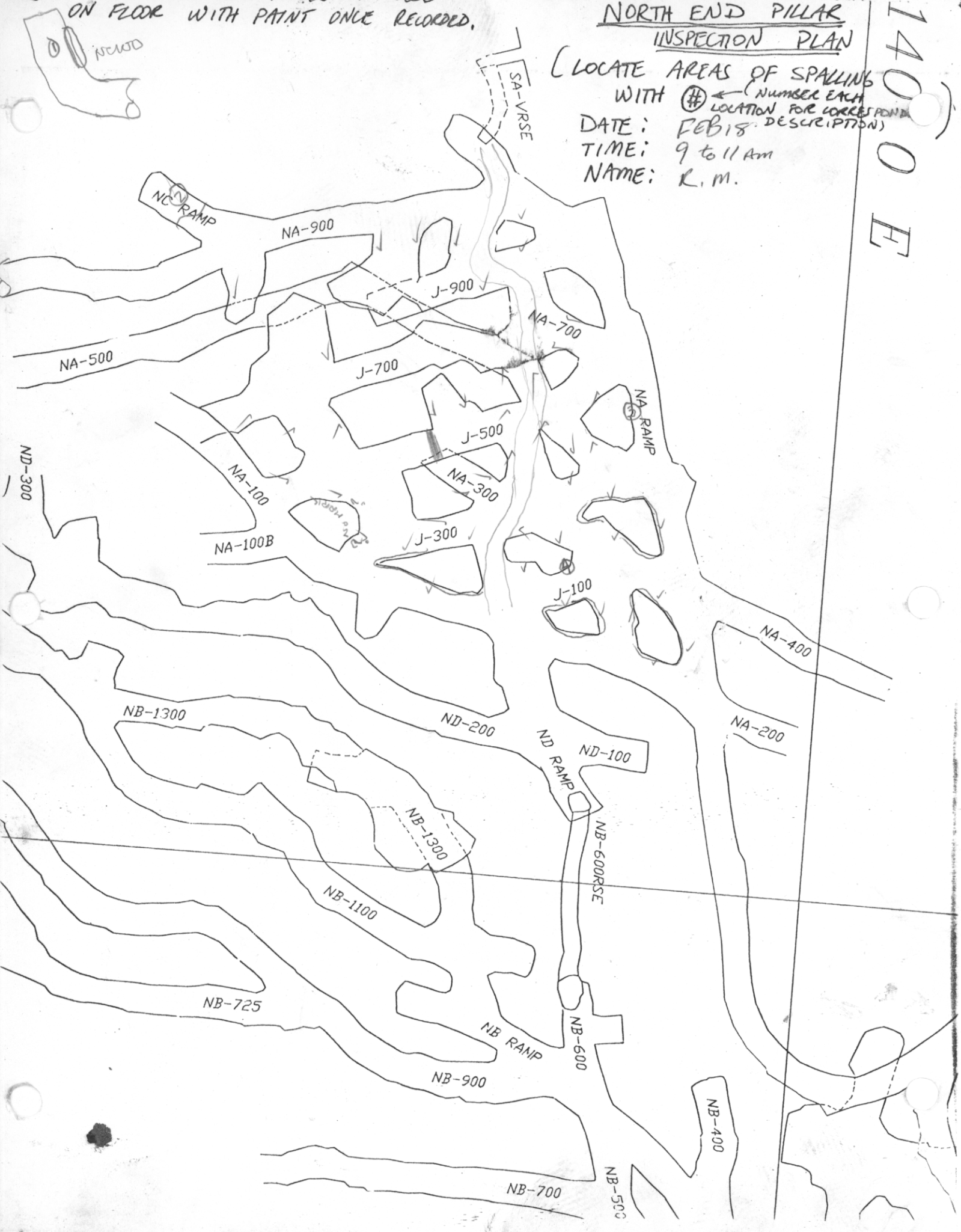
NOTE: MARK ANY FRESH PIECES OF LOOSE ON FLOOR WITH PAINT ONCE RECORDED.

# NORTH END PILLAR INSPECTION PLAN

1400 E

(LOCATE AREAS OF SPALLING WITH # (NUMBER EACH LOCATION FOR CORRESPONDING DESCRIPTION))

DATE: FEB 18  
TIME: 9 to 11 AM  
NAME: R.M.





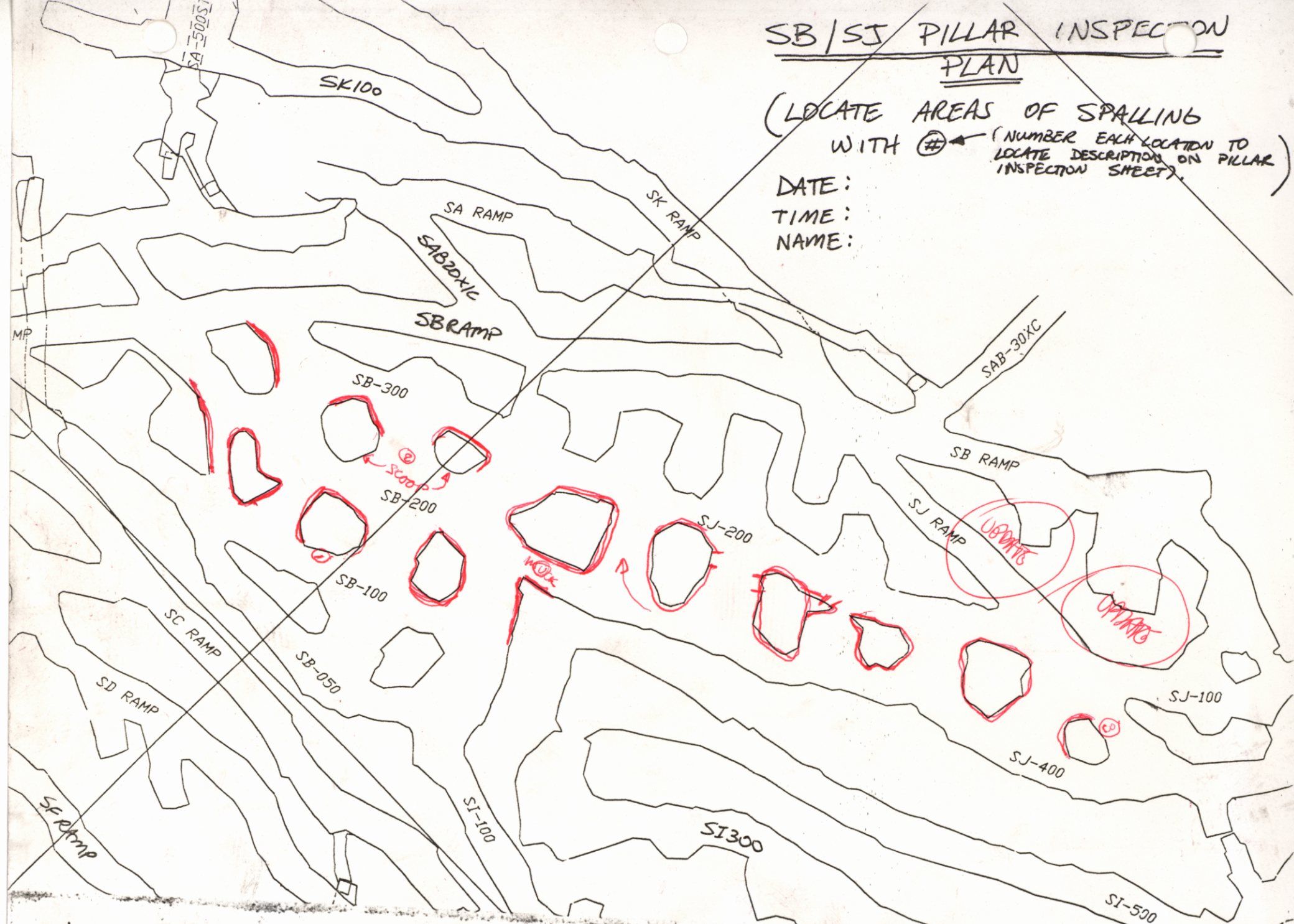
# SB/SJ PILLAR INSPECTION PLAN

(LOCATE AREAS OF SPALLING WITH # (NUMBER EACH LOCATION TO LOCATE DESCRIPTION ON PILLAR INSPECTION SHEET))

DATE:

TIME:

NAME:



NOTE: MARK ANY FRESH PIECES OF LOOSE ON FLOOR WITH PAINT ONCE RECORDED.

FROM M. CHURSIKOFF  
DEPT. U. GEOLOGY

SEND TO LEO HWOZDYK	COPY TO DATE March. 4/91 SUBJECT
---------------------	--

MESSAGE

▶ A pillar inspection of the SB stope was conducted with Jim Mathis on March 7/91. #1 on the SB/SJ inspection plan show signs of minor slipping along HW contact. #2 has jointing / fractures, a potential for slabbing.

M. Chursikoff

REPLY

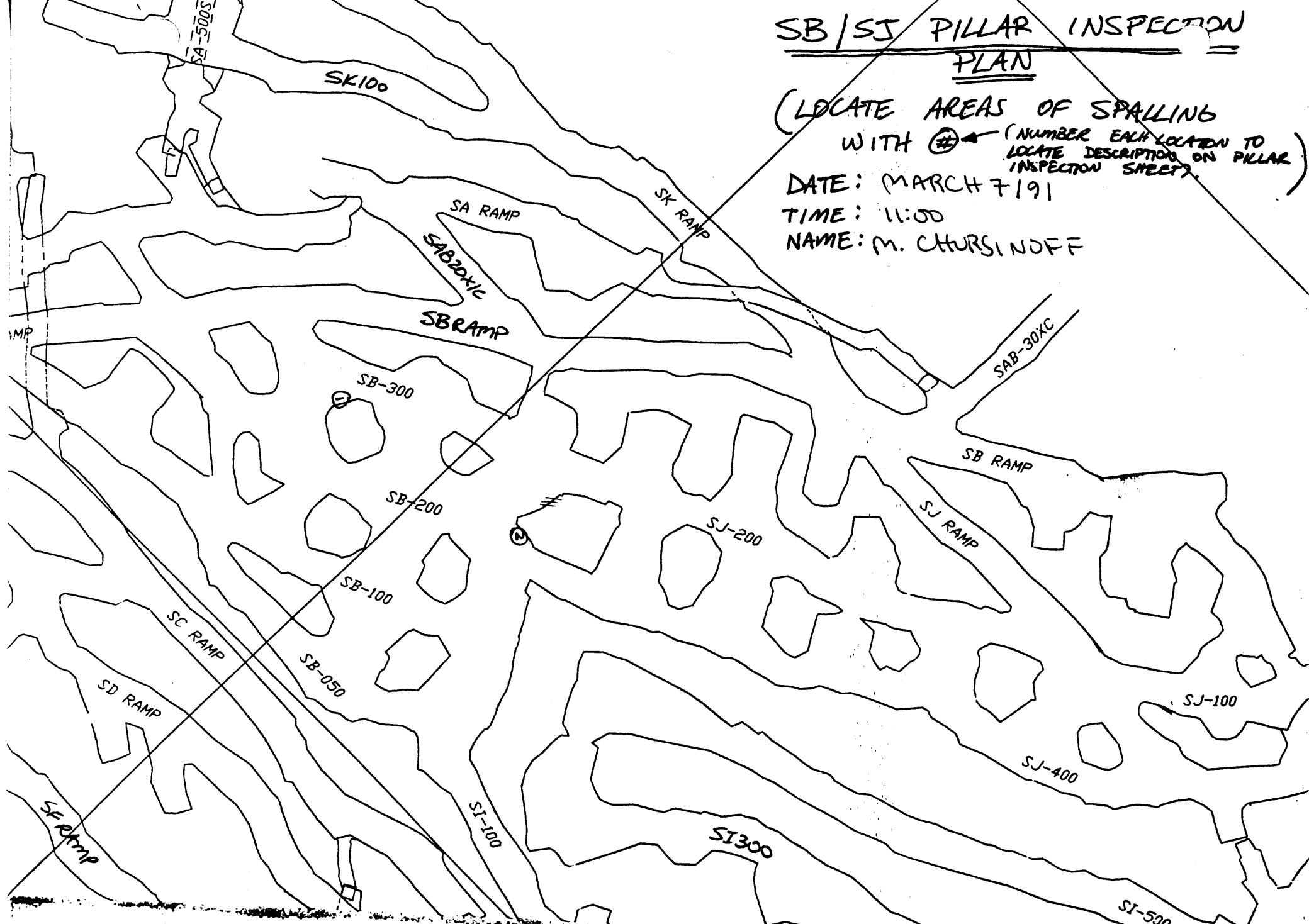
4S500E - 1    ← SPEEDIMEMO → <small>MOORE SPEEDIPLY - 1 - MOORE CLEAN PRINT PATENTED 1963-1966</small>	REPLY FROM	DATE
---	------------	------

LIFT THIS SHEET TO REMOVE (RETAIN FOR YOUR FOLLOW-UP)

SB/SJ PILLAR INSPECTION  
PLAN

(LOCATE AREAS OF SPALLING  
WITH ⊕ (NUMBER EACH LOCATION TO  
LOCATE DESCRIPTION ON PILLAR  
INSPECTION SHEET))

DATE: MARCH 7/91  
TIME: 11:00  
NAME: M. CHURSIKOFF



NOTE: MARK ANY FRESH PIECES OF LOOSE ON FLOOR  
WITH PAINT ONCE RECORDED.

CURRAGH RESOURCES INC.  
file: PILLAR

PAGE. 1 OF 1

FARO U/G PILLAR INSPECTION  
=====

DATE. March 7/91  
TIME. \_\_\_\_\_

AREA INSPECTED: SB/S) STOPS

INSPECTED BY. MELANIS CHURSIKOFF  
INSPECTED BY. JIM MATHIS

# ROOM/PILLAR

① Mine sloping along HW contact.  
Clear surface observed.

② Fractures & jointing observed. No fresh  
loose. Potential slabbing here.

SIGNED. Mel Chur  
SIGNED. \_\_\_\_\_

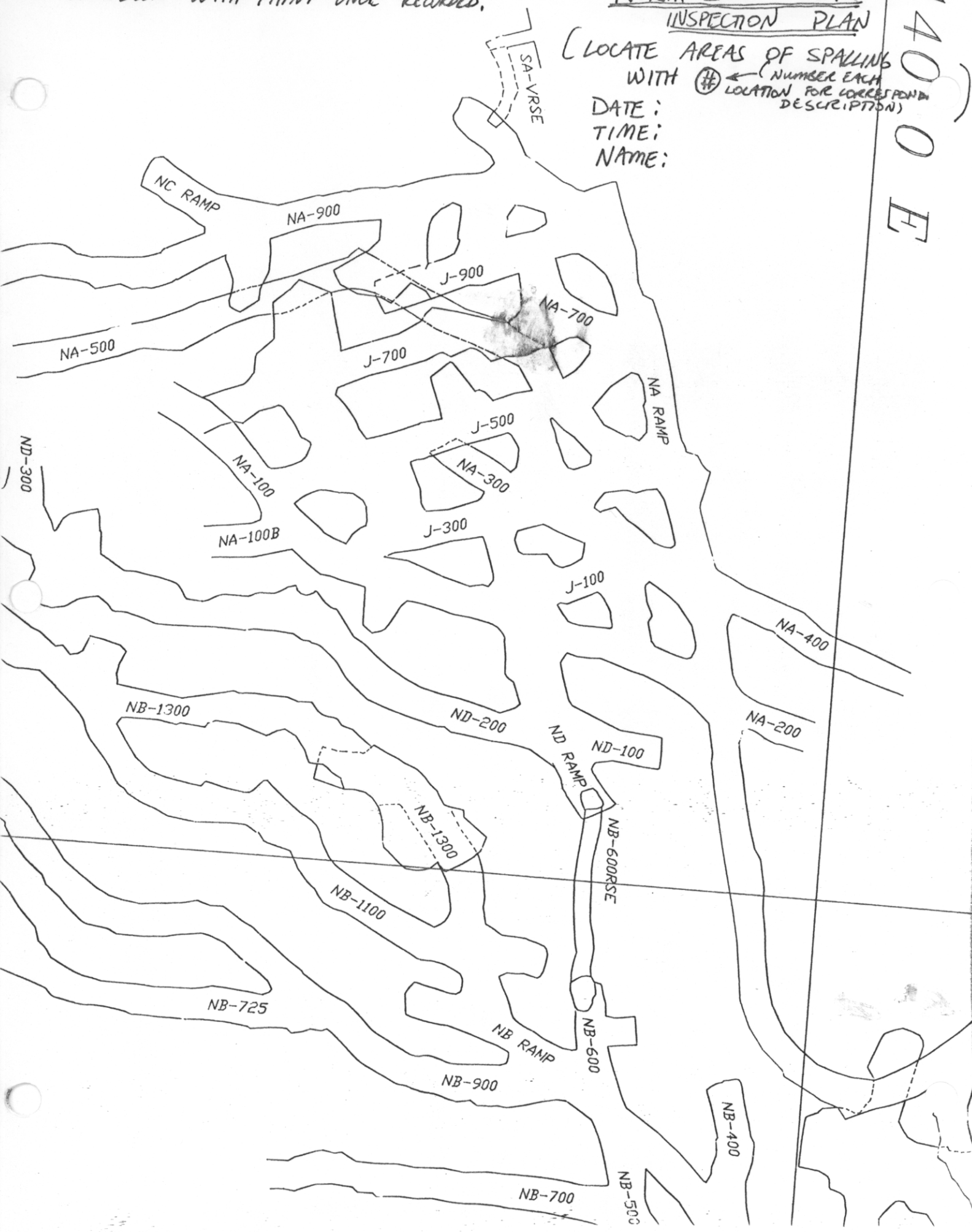
NOTE: MARK ANY FRESH PIECES OF LOOSE ON FLOOR WITH PAINT ONCE RECORDED.

# NORTH END PILLAR INSPECTION PLAN

1400 E

(LOCATE AREAS OF SPALLING WITH # (NUMBER EACH LOCATION FOR CORRESPONDING DESCRIPTION))

DATE:  
TIME:  
NAME:

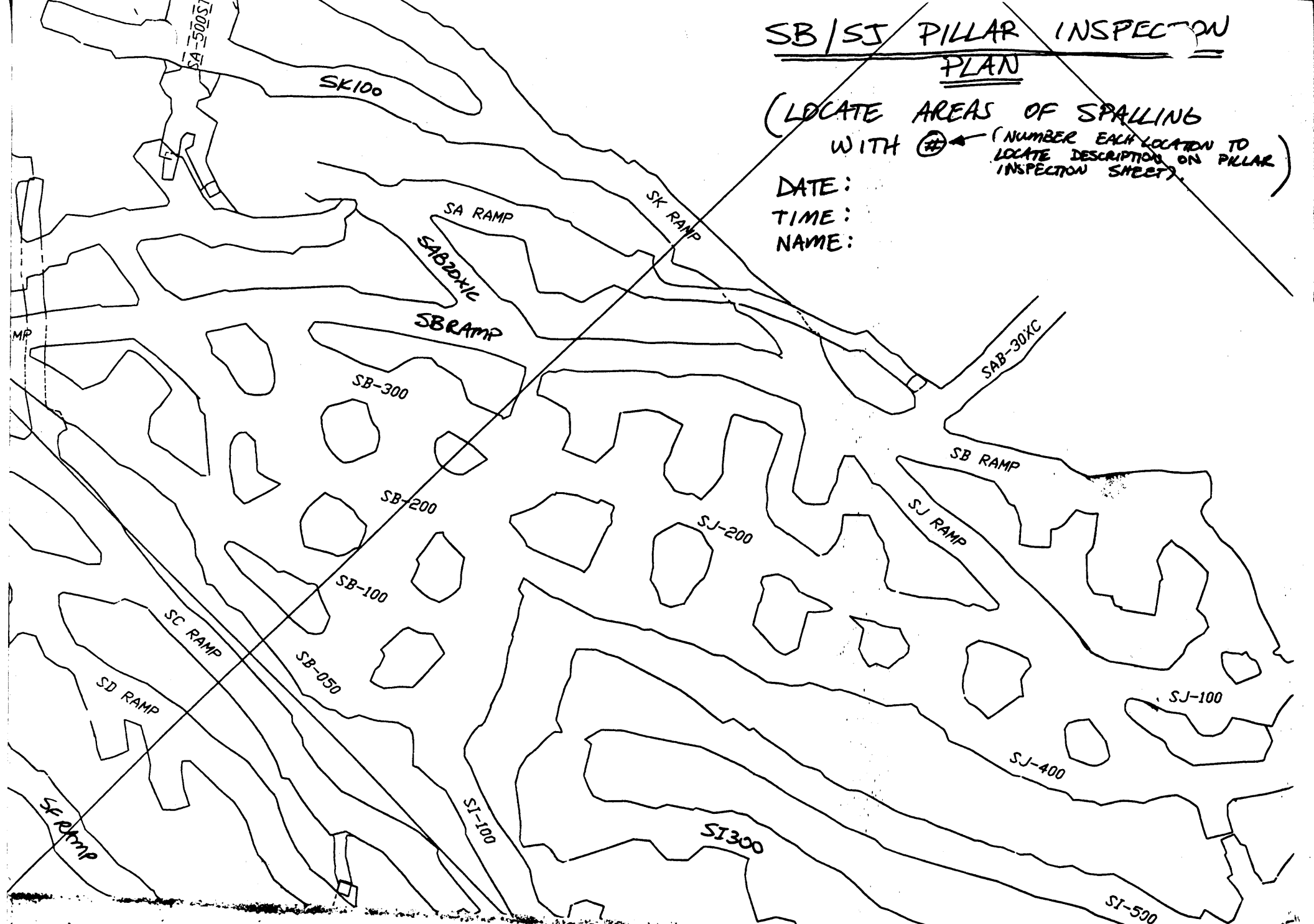




# SB/SJ PILLAR INSPECTION PLAN

(LOCATE AREAS OF SPALLING WITH ⊕ (NUMBER EACH LOCATION TO LOCATE DESCRIPTION ON PILLAR INSPECTION SHEET))

DATE:  
TIME:  
NAME:



NOTE: MARK ANY FRESH PIECES OF LOOSE ON FLOOR WITH PAINT ONCE RECORDED.



PIT WALL



CURRAGH RESOURCES INC.  
file: PILLAR

PAGE. 1 OF 1

FARO U/G PILLAR INSPECTION  
=====

DATE. June 27/92

TIME. 12:41

AREA INSPECTED: SA-SK BLOCK

INSPECTED BY. MJC

INSPECTED BY. \_\_\_\_\_

# ROOM/PILLAR

GENERAL REMARKS

#1

Overall good condition of pillar.  
Peeling off of bolts <sup>(1 1/2")</sup> at base of pillar. See  
on indicates on map. All bolts ~~are~~ appear to  
provide support for pillar.

#2

Overall satisfactory condition. Minor small  
loose falling off sides.

#3

Good condition. Well distributed of bolts.  
Minor jointing. See map.

SIGNED. \_\_\_\_\_

SIGNED. \_\_\_\_\_



FARO U/G PILLAR INSPECTION  
-----

DATE. June 27 1992  
TIME. 1:26

AREA INSPECTED: SB-SI

INSPECTED BY. M.P.C.  
INSPECTED BY. \_\_\_\_\_

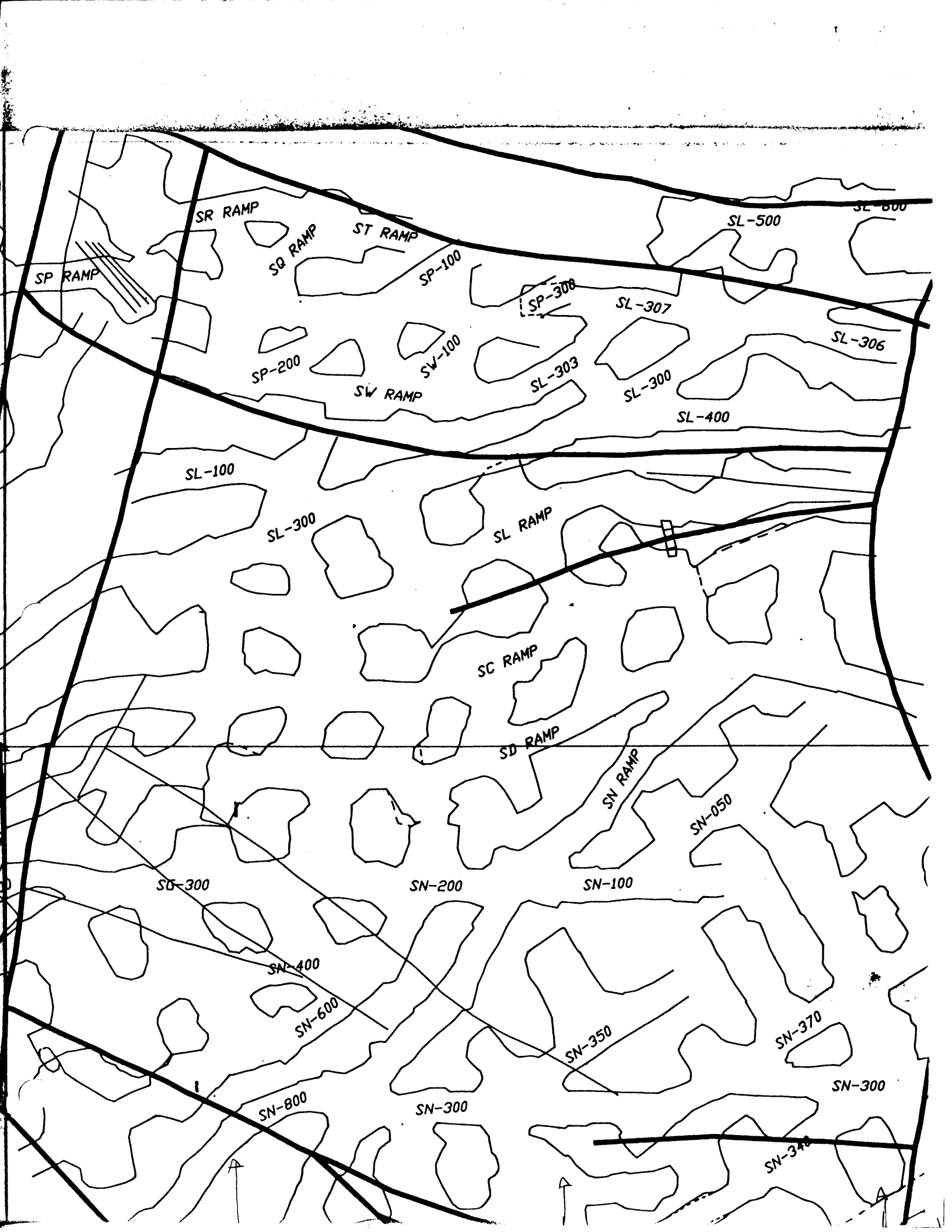
# ROOM/PILLAR

#1	See Map. A) Jagged edge, potential slab & peeling B) 2 loose bolts. Slip plane visible in wall.
#2	See Map. A) Jointly prominent 3 loose bolts. B) Loose bolts at edge/corner of pillar.
#3	A) HW CONTACT EXPOSED AT BACK. No visible slipping.
#4	Loose bolts indicated by #. A) HW CNT exposed. Some peeling. Back is narrower compared to base here.
#5	Overall satisfactory condition. HW cnt exposed. No visible peeling. A) in between pillar 5 & 7 peeling off hw. from back. loose bolts.
#6	HW contact visible on S-S side of pillar. no visible slipping. Between pillar #6 & 7 groove falls depth 3'
#7	HW contact exposed at back. visible slips of HW @ # marked on map. joints visible thru out pillar. Narrower at top than base. joints at base showing signs of stress.
#8	Satisfactory condition.
#9	HW exposed at back. Loose bolt & block @ A See map.
#10	Satisfactory condition.
#11	Slip plane visible in pillar. Overall satisfactory condition.
#12	Satisfactory condition. Minor jointing.
#13	HW cnt exposed. minor slippage of hw cnt. loose bolts as marked between #13 & #4.

SIGNED. M.P.C.  
SIGNED. \_\_\_\_\_







SR RAMP

SP RAMP

SQ RAMP

ST RAMP

SP-100

SL-500

SL-600

SP-308

SL-307

SP-200

SW-100

SL-306

SW RAMP

SL-303

SL-300

SL-400

SL-100

SL-300

SL RAMP

SC RAMP

SD RAMP

SN RAMP

SN-050

SG-300

SN-200

SN-100

SN-400

SN-600

SN-350

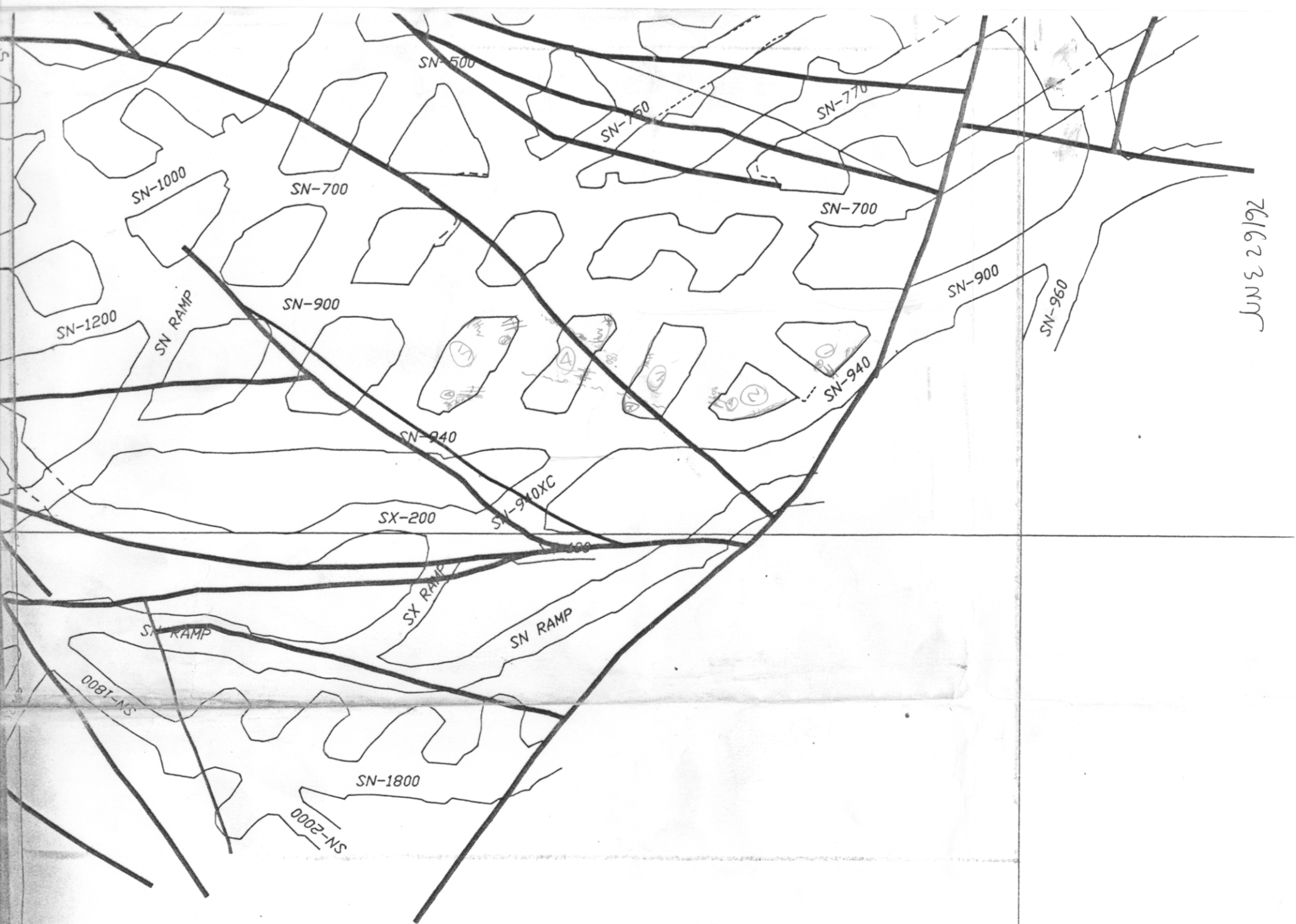
SN-370

SN-800

SN-300

SN-300

SN-340



JUN 29 1992

FARO U/G PILLAR INSPECTION

DATE: June 29/92  
TIME: 2:28

AREA INSPECTED: SN 900/700 B

INSPECTED BY: MJC  
INSPECTED BY:

ROOM/PILLAR

SEE MAP. FOR AREAS IDENTIFIED

#1

How cut exposed at back of pillar on SW side of pillar. @ Joints as marked on pillar. ② Jagged corner loose bolts. Overall satisfactory condition.

#2

Overall satisfactory condition. How contact exposed on S-SW side of pillar. No visible movement along contact. @ Minor jointing ②

#3

How cut of IDO exposed at back. Bolted & screened. Overall good condition. @ Loose bolts, bolts have peeled off. Good distribution of bolts.

#4

W contact exposed on E side. No slippage. Well bolted & screened. x as marked on pillar. Loose bolts at top. No bolts on bottom of this corner. Prominent fault wrapped in.

#5

@ Loose bolts & a loose blk. Overall satisfactory condition. Jointing present @ How contact exposed on NW corner. Good condition. ② Prominent jointing present. Jagged corner. Loose looking blk. on this jagged corner.

SIGNED.  
SIGNED.

MJC



FARO U/G PILLAR INSPECTION  
=====

DATE. Aug 6/92  
TIME. 12:16

AREA INSPECTED: SN 900/940/700 PILLARS INSPECTED BY. MSC  
INSPECTED BY. \_\_\_\_\_

# ROOM/PILLAR SEE MAP LOCATIONS.

#(1) 940/900 overall condition of pillar satisfactory. few cuts exposed on some areas of pillar. No visible movement. Well bolted & screened. \* Slab appears to be loose. Needed scaling?

#2 Satisfactory condition. few cuts exposed. Screened & bolted. OK map. \* (3) Loose bolts on this corner. minor loose falling from sides.

#3 Heavily screened on south wall. <sup>loose enclosed by screening.</sup> Minor loose falling (due to blasting) \* Pieces of loose (3-4') 10' up on SE wall corner. How rock appears to show no signs of movement. Loose bolts (2) in SE corner. present.

#4. \* SW corner loose bolts. Crack also in SW corner. Possible slab forming. Overall good condition.

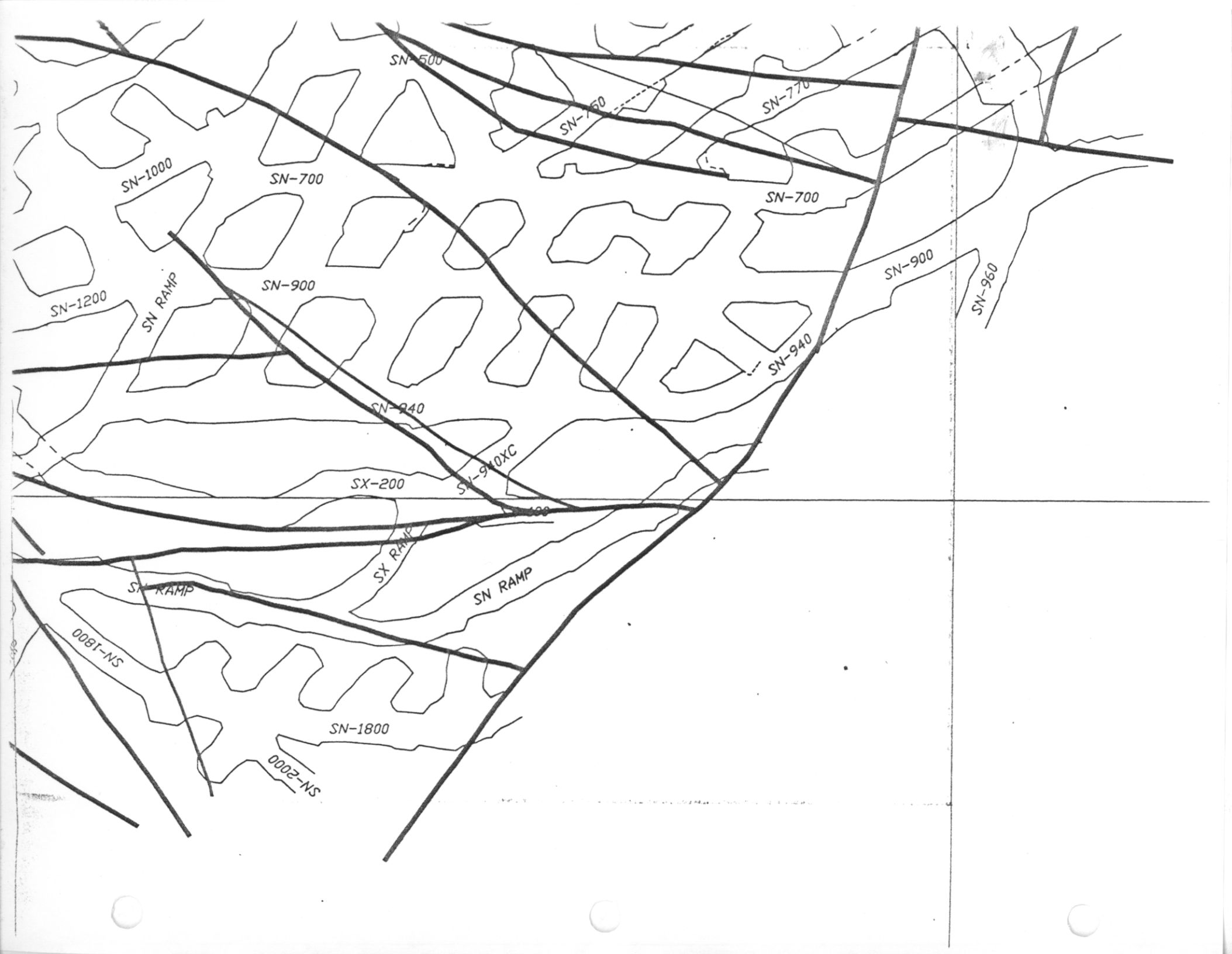
#5. NW/W corner. Loose bolts. Some showing no signs of support. Loose bolts visible (2-3 ft) overall ratty looking corner. FAULT well exposed in wall. \* Crack exposed in wall on SE corner.

#6. Overall good condition. No loose bolts visible. Minor pieces of loose. present around base of pillar.

#7. Good condition \* Loose bolt in a crack 2 inches on SW corner of pillar. Possible formation of a slab.

#8. Loose bolts on NW corner. Overall satisfactory condition.

SIGNED. MSC  
SIGNED. \_\_\_\_\_



EXAMPLES

INCLUDING MAPS & NORTHEND/OTHER INSPECTION

CURRAGH RESOURCES INC.  
file: PILLAR

PAGE 3 OF 4 SHEETS

FARO U/G PILLAR INSPECTION  
=====

MARCH 7/91

DATE: ~~MAR FEB 1991~~  
TIME: 11:15

AREA INSPECTED: SB/SJ STOP ~~ES~~

INSPECTED BY: I. BILQUIST  
INSPECTED BY: J. MATHIS

# ROOM/PILLAR

1) SB300/200 PILLAR

- JOINTING ~ 1cm gap.

2) ~~SB200~~ SB200 BACK

- CRACKING/FLAKING OF RUST ON ROCK BOLTS

3) SJ 200 PILLARS

- FRESH LOOSE FROM PILLAR ON FLOOR

4) SB200/400 PILLAR  
DI

- MAJOR DISTRESS - ~~LOAD TAKEN UP BY~~ COLLAPSED BACK LOAD BEING TAKEN UP BY PILLARS IN AREA WITH

~~SB200~~

NEW FRACTURES, FRESH LOOSE FROM PILLAR AND, LOOSE FROM BACK AND ROCK BOLT PLATES POPPED FROM BOLTS.

5) SB 300

Mine slipping along HW contact. Clean surface observed.

SIGNED. \_\_\_\_\_  
SIGNED. \_\_\_\_\_



NA-900

J-900

NA-700

J-700

J-500

NA RAMP

NA-100

NA-300

NA-100B

J-300

J-100

ND-200

ND RAMP

ND-100

NA-200

