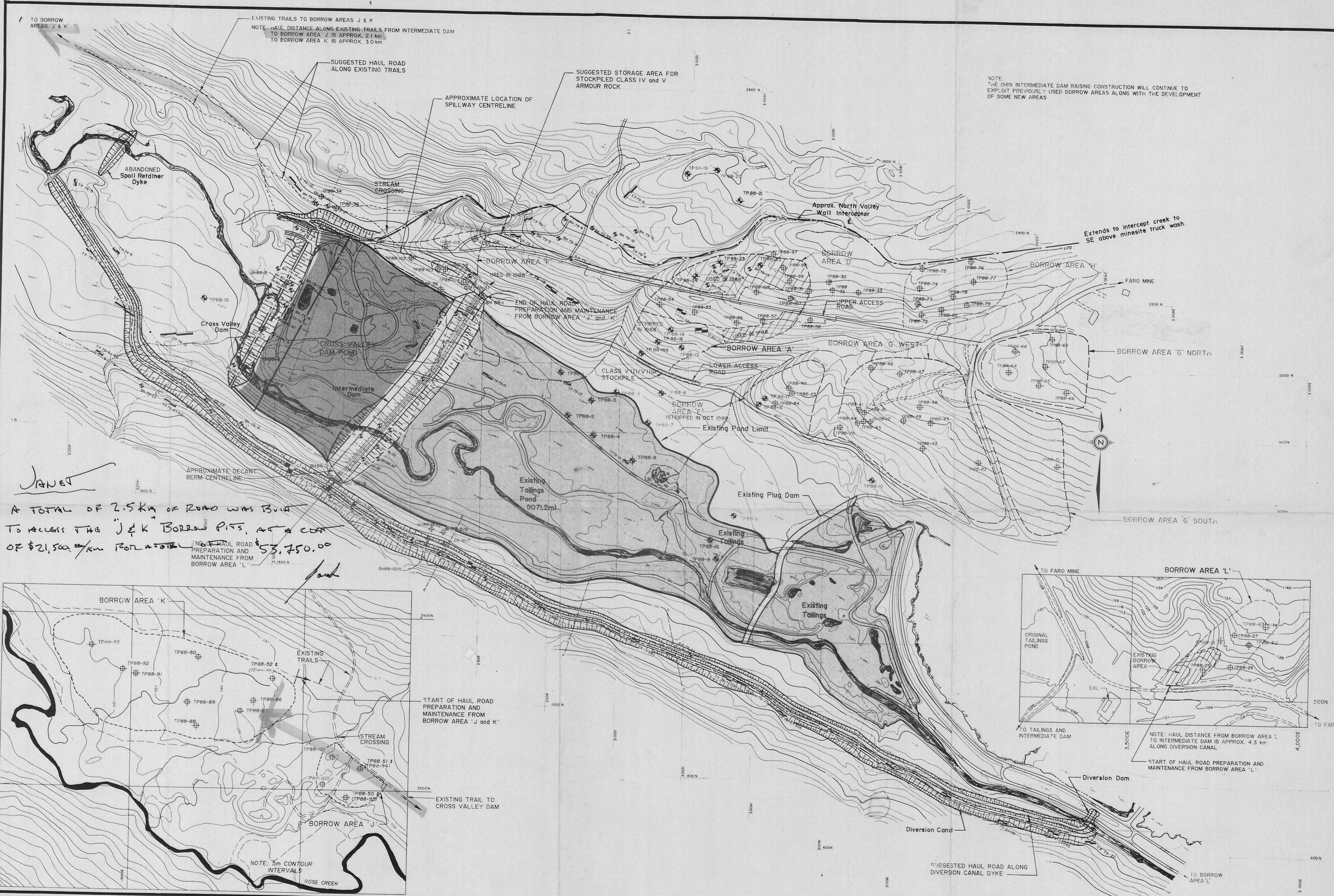
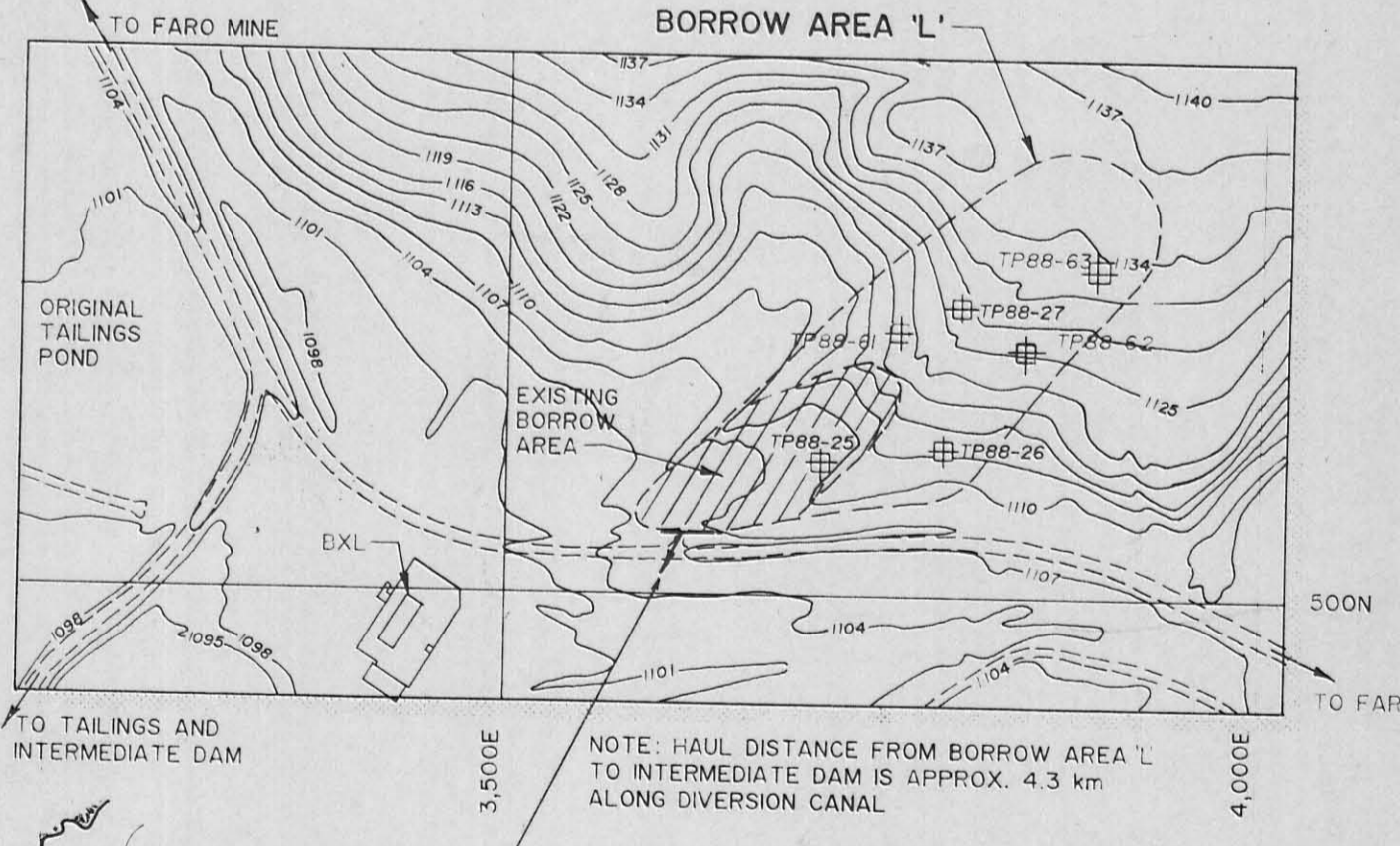
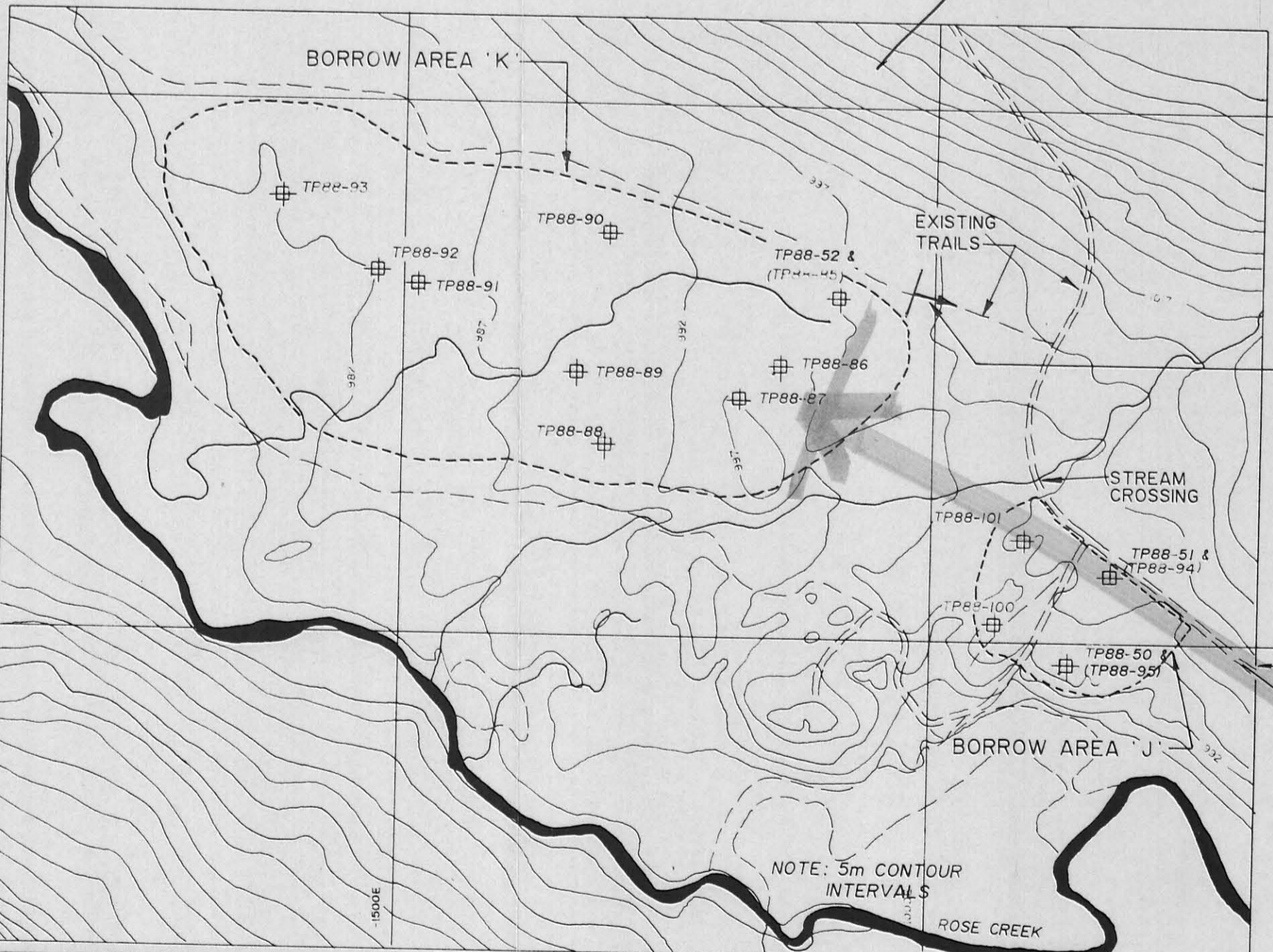


SEE INSERT BELOW



NOTE:
THE 1989 INTERMEDIATE DAM RAISING CONSTRUCTION WILL CONTINUE TO EXPLOIT PREVIOUSLY USED BORROW AREAS ALONG WITH THE DEVELOPMENT OF SOME NEW AREAS

JANET
A TOTAL OF 2.5 km OF ROAD WAS BUILT TO ACCESS THE J & K BORROW PITS, AT A COST OF \$21,500/km FOR A TOTAL OF \$53,750.00



- NOTES
- 1) Mapping performed by Northwest Survey Corporation International Limited and based on photographs taken August 15, 1979.
 - 2) Grid system reference - Hasford Impney Welter Control Station No. 3
 - Northing 1443 685 m
 - Easting 1302 385 m
 - Elevation 1073.54 m
 - 3) Contour interval 3 m unless stated otherwise.

NO.	DESCRIPTION	DATE	BY
2	ISSUED FOR CONSTRUCTION	2 JUN 89	DAK
1	ISSUED FOR TENDER	MAY 89	DAK



Scale: 1:5000
 Job No. 882-2413
 Drawing No. 8822413-1
 Drawn by: RK
 Reviewed by: DK/HGG
 Date: APR 89

CURRAGH RESOURCES INC
 Faro
 Yukon Territory

GENERAL SITE AND
 BORROW AREAS PLAN
 003213
 INTERMEDIATE DAM 1989 RAISING

