

003235

Lamerton & Associates
Professional Surveyors Ltd.
Suite 200 106 Main Street
Whitehorse, Yukon Y1A 2A8
667-6664 FAX: 668-7236

October 12, 1990

John Zbeetnoff
Curragh Resources Inc.
PO Box 1000
Faro, Yukon Y0B 1K0
994-2600 ext. 239

Our File: 1391

FAX: 994-2664

RE: Traverse to Dye Portal Drill Holes, Coordinates

Please find enclosed a coordinate listing for the Dye Portal drill hole Traverse.

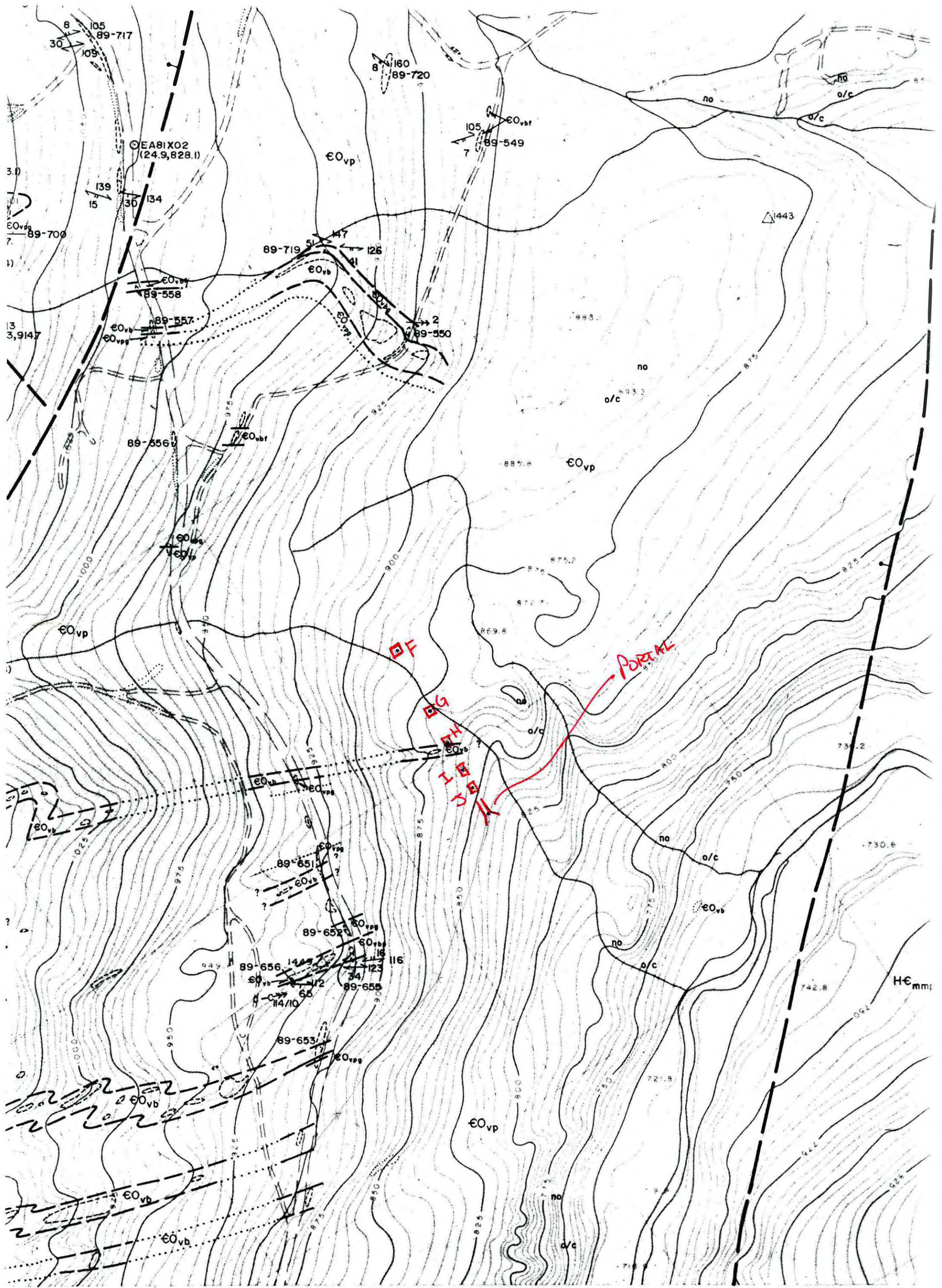
Station 52, Ramp Bottom is included here and shows an elevation of 1029.4 metres. We have also included dates when the various points were located. All traverses were closed upon our work in loops and the elevations, done by trigonometric methods closed to 0.05 metres.

Yours Truly,


Glen W. Lamerton, CLS

POINT	NORTHING	EASTING	ELEV	CODE
1	6897493.926	599458.978	1266.526	1439 as measured
2	6899358.384	597307.686	935.430	1449
3	6900432.898	597666.333	1021.306	Rd. '69 Post
4	6898953.008	597354.100	823.603	
5	6899178.387	597549.888	813.419	
6	6899093.925	597562.148	790.671	
7	6899126.292	597530.927	799.378	
8	6899406.670	597842.292	846.181	
10	6899411.784	597723.837	848.070	
12	6899512.121	597767.034	877.738	
13	6899426.113	597634.059	853.315	
14	6899551.165	597643.921	872.127	
17	6900123.177	597700.479	970.958	
18	6900096.926	597686.996	963.276	
19	6900061.112	597626.079	967.368	
20	6900036.341	597540.892	973.231	
21	6900044.761	597514.330	979.760	
22	6900120.670	597565.290	991.020	
23	6900267.936	597620.416	1005.447	
24	6900492.967	597717.251	1027.267	
25	6900660.860	597766.258	1038.139	
26	6900839.258	597747.209	1044.379	
27	6900972.355	597673.372	1054.904	
28	6901044.431	597609.396	1063.719	
29	6901187.216	597571.009	1078.041	
30	6901149.985	597770.009	1029.353	
32	6901171.918	598013.247	1040.552	
39	6897494.701	599458.084	1266.526	1439
50	6899400.000 <i>Portal</i>	597632.000	843.387	Dye Collar
51	6900096.926 <i>E</i>	597686.996	963.276	on Road
52	6901149.985 <i>B</i>	597770.009	1029.353	Ramp Bottom
53	6899444.820 <i>J</i>	597635.534	854.949	445 from portal
54	6899474.566 <i>I</i>	597637.880	860.384	475
55	6899519.045 <i>H</i>	597641.388	865.025	+120
56	6899574.463 <i>G</i>	597645.758	874.225	+175
57	6899673.966 <i>F</i>	597653.604	884.925	+275
100	6899400.000 <i>portal</i>	597632.003	843.387	

Oct 6
Oct 7
Oct 10, 11
Oct 6



SOURCES INC.
AREA

GEOLOGY
SHEET F-6-4 (E 1/2)

NORTH WEST SURVEY CORPORATION
SHEET INDEX



1:5000

1:5,000