

003316

Assuming the portal is at

6899400.000 N

597632.000 E

843.400 Elev

and Ramp Bottom is at

6901150.000 N

597770.000 E

476.500 Elev

then drill holes should be marked out at the following positions

<u>No.</u>	<u>comments</u>	<u>Northing</u>	<u>Easting</u>	<u>Elev</u>
2	Ramp bottom	6901150.000	597770.000	~ 1020
1	on a road	6900096.836	597686.951	~ 965
3	45m from portal	6899444.860	597635.538	~ 854
4	75m "	6899474.767	597637.896	~ 858
5	120m "	6899519.628	597641.434	~ 865
6	175 "	6899574.458	597645.757	~ 870
7	275 "	6899674.148	597653.619	~ 884

All these points should fall on a line from portal to ramp bottom

John Zbeetnoff @ 11:10
October 4, 1990
Dy

Drilling @ a depth of 1963 feet

1. Downhole motor intersected a major fault - with difficulty the motor has been retrieved - currently coring the fault - and expect to clear it soon - the next procedure will to to lower the HWL rods past the fault, recollar the motor and ~~being~~ *begin* motoring again.
2. Fragments recovered from the fault contained fuchsite, the displacement of the fault is suspected to be significant.
3. Things are currently under control!

zbeetnoff

collar for portal has been surveyed @ 6889400N; 597632E elevation of 843.4m
now - lamerton cannot get coordinates - must go through their office
gregg take the numbers that you generate; give them to lamerton's office in
WH (glen) he will relay them to his people on the site

on his way to the drill will be at condo within the hour (3:00 ish)

Thanks guys, have a good time outside!!

CURRAGH RESOURCES INC.

117 Industrial Road
Whitehorse, Yukon
Y1A 2T8

Tel: (403) 668-8021
Fax: (403) 668-6518

TELEFAX TRANSMISSION

TO:

John Zbeetoff
(should be standing beside you by now)

FROM:

Gregg A. Jilson, Vice-President, Exploration

WHITEHORSE OFFICE

DATE:

1 Oct 90

TIME:

1:00

SUBJECT:

Dy holes

your merching - orders if

not clear call me

- tonite at ~~Delta River Inn~~ Delta River Inn
(604) 278 1241

- Tues at Cirque Camp (604) 682 0350

- Tues & Wed Nite at Delta Place (604) 687 1122

- Wed at Coopers & Lybrand in Vancouver
(604) 689 8581 (with P Furselberger)

- Thurs (am) at SRK 681-4196

If all pages are not received, please contact Geraldine at 668-8034

THIS TRANSMISSION CONSISTS OF 13 PAGE(S)
(including cover page)

Location of Bottom of ramp
- per Jim Proudfoot of CMD

6901150.000 N

597770.000 E

476.500 Elev.

one of the holes would investigate this point - the surface elevation ^{about} ~~at~~ this point is approx 1020.000 Elev. - The hole to test the ramp bottom would thus be $1020 - 460 = 560$ m long

The second hole I mentioned is at

6900074.271 N

597643.237 E

at approx 965.000 Elev

the ramp centerline there would be approx
648.082 m elev.

The hole would thus be $965 - 630 = 335$ m deep.

This site should be near a road.

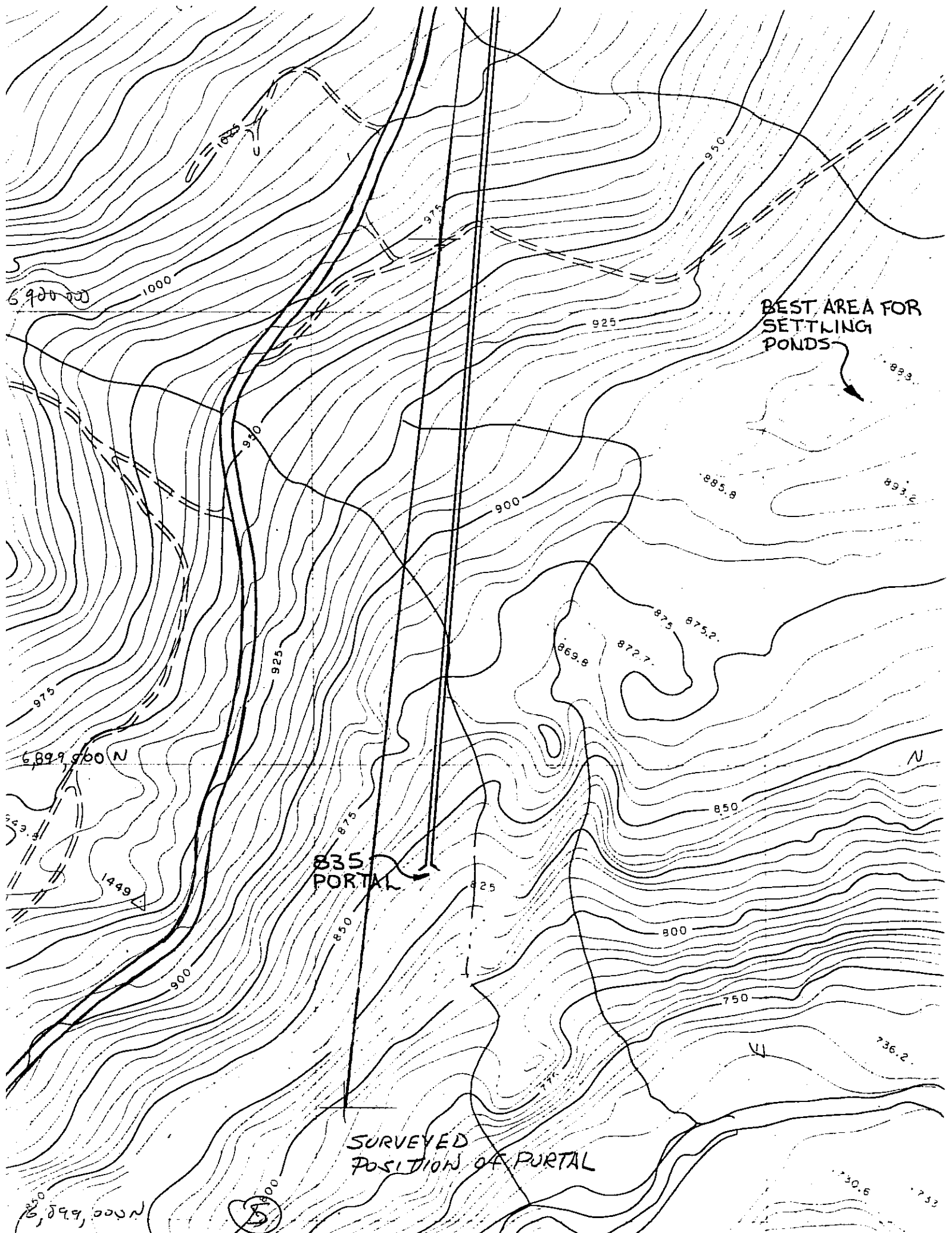
①

Note that the ramp bottom is fixed until the ground is proven to be unsuitable. (thus the drill hole) however the portal can float until it is fixed in place by excavation. The two alternatives are shown on the attached map (in 2 parts)

You will also note that there are 5 holes to investigate the portal - their locations also "float" at this time. Please note that the fifth hole (the deepest of the cluster near the portal) should be drilled exactly on ramp and casing is to be left in so that the hole can be

(2)

reamed out at a later date and
a waterline be brought up the
hole to the surface from underground -
Consequently the exact location and
control of the trajectory of this
fifth hole is quite critical to
the project



BEST AREA FOR
SETTLING
PONDS

835
PORTAL

SURVEYED
POSITION OF PORTAL

6,900.00

6,899,900 N

6,899,000 N

5

1449

N

736.2

730.6

733

893.2

893

885.8

875 875.2

872.7

869.8

800

850

750

900

925

950

975

1000

930

925

975

850

825

775

825

The following is the initial
Drill proposal - for your
information only -

exact holes and locations
will vary - do not
drill these.

CURRAGH RESOURCES INC.

117 Industrial Road
Whitehorse, Yukon
Y1A 2T8

Tel: (403) 668-8021
Fax: (403) 668-6518

TELEFAX TRANSMISSION

TO: Marvin Pelley @ Toronto
cc Colin Benner % B. Weymark @ Faro

FROM: Gregg A. Jilson, Vice-President, Exploration

WHITEHORSE OFFICE

DATE: 20 Sept 90 TIME: 9 AM

SUBJECT: Dy Decline Drilling

Total proposal 3 (from CMD, CRI Toronto & CRI Whitehorse)

At portal 315 m in 5 holes

Along decline 1170 m in 3 holes

at corner 570 m in 1 hole

at shaft latitude 720 to 850m in 1 hole

TOTAL 2775 to 2905m in 10 holes

EST COST \$410,000 to \$429,000

Reduced Program

at portal 200m in 3 holes

along decline 1170m in 3 holes

at corner 570 m in 1 hole

TOTAL 1940m in 7 holes

EST COST \$286,000

If all pages are not received, please contact Geraldine at 668-8034

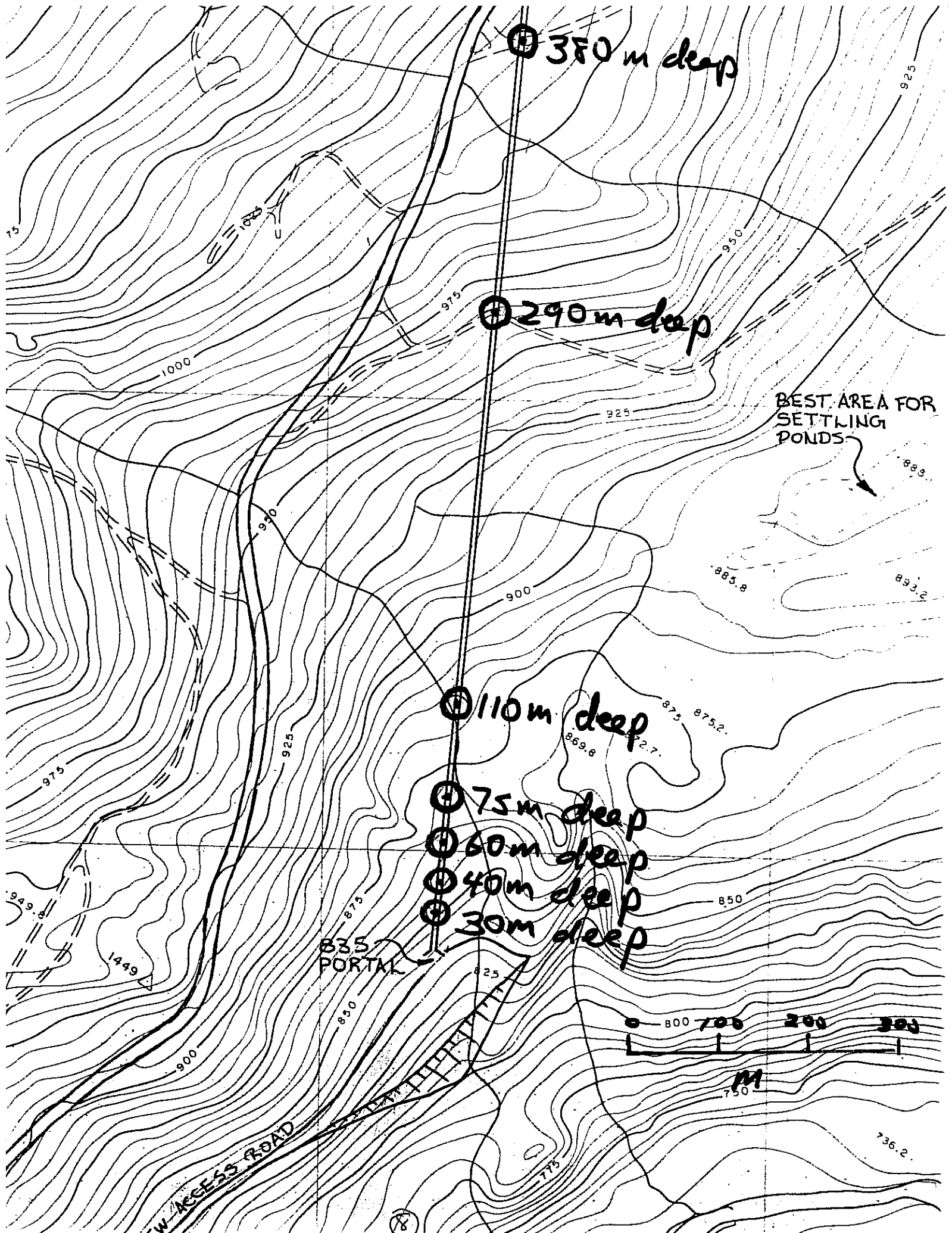
THIS TRANSMISSION CONSISTS OF 3 PAGE(S)
(including cover page)

No Corner Hole
TOTAL 1370m in 6 holes

EST COST \$202,000 (7)

Notes

We are working on the geology but we don't know much about this area will definitely be faults



380 m deep

290 m deep

110 m deep

75 m deep

60 m deep

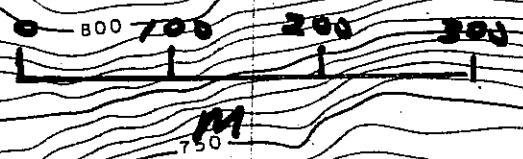
40 m deep

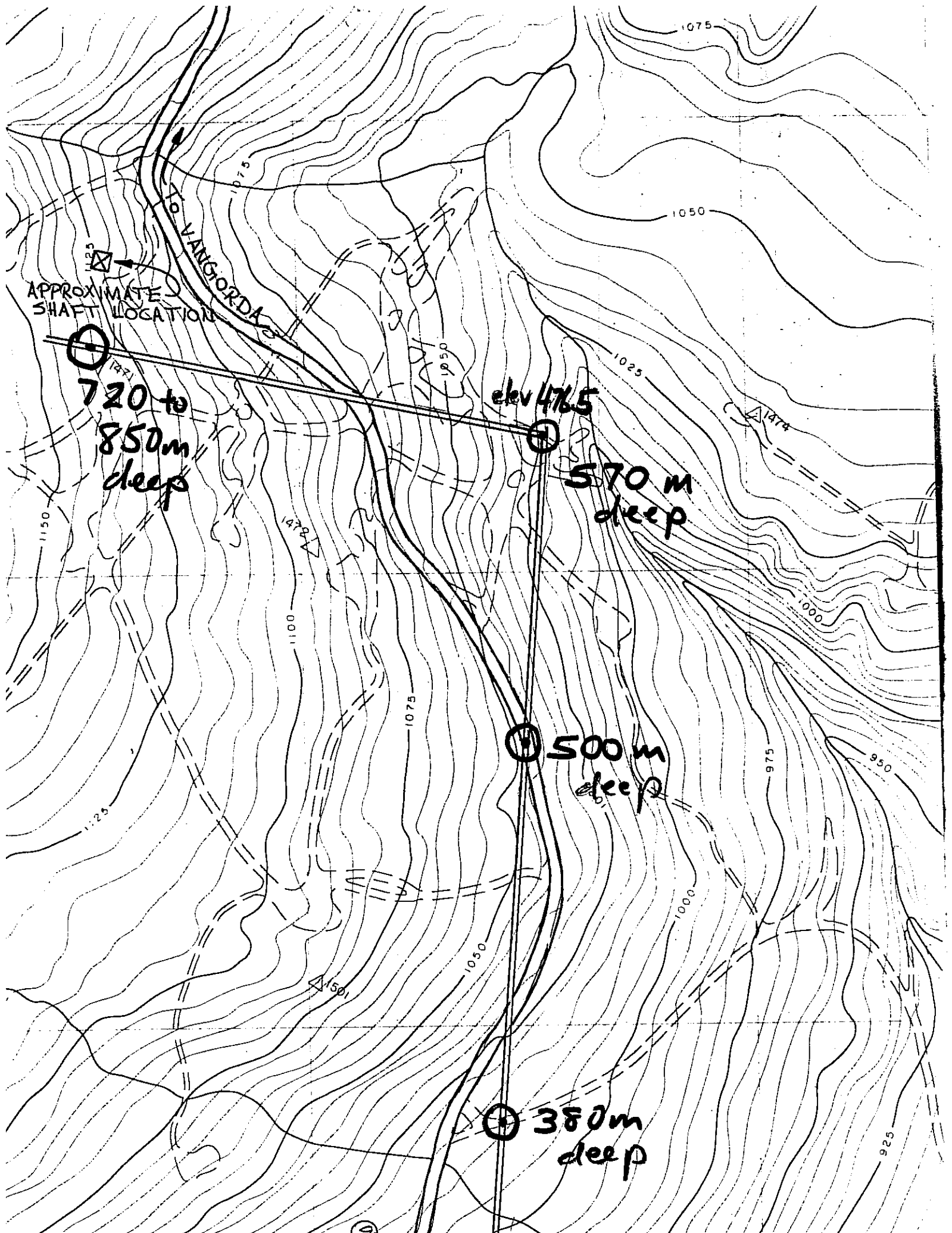
30 m deep

BEST AREA FOR SETTLING PONDS

W ACCESS ROAD

PORTAL





APPROXIMATE
SHAFT LOCATION

TO VANGIORDA

720 to
850m
deep

elev 4765

570 m
deep

500 m
deep

380m
deep

This is the response
to the initial
drill proposal -
again FY+ only

CURRAGH RESOURCES INC.

INTER-OFFICE MEMORANDUM

FARO MINE

DATE: Sept. 20, 1990

TO: Marvin H. Pelley —
cc: Gregg Jilson

G. Jilson: I agree with this approach and as per our discussion

FROM: C.K. Benner

Sept 24/90

Gregg

SUBJECT: DY DECLINE DRILLING

I would suggest the following approach:

- o As a minimum, you must drill 5 holes at the portal. I have walked the site and believe we would be making a grave error in short changing ourselves on information at the most critical point of the project - the entry. This is only 15 meters more than the 'reduced' proposal (total drilling 315 meters).
- o 6th hole as per Gregg's proposal at 965 m elevation (topo) 290 m depth.
- o 7th hole as per Gregg's proposal at intersection - 570 m depth.
- o Hole 81X02 should provide sufficient information for ground between 6th and 7th hole.
- o Total drilling required 1,175 meters. Based on your numbers (assuming \$150/m or \$147.42/m / 3.28 = \$44.95/ft) the cost would be \$173,222.
- o Don't understand why rate is so high - last drilling done at CRI - Faro was about \$28/foot including assays? Are we getting a quote on directional control holes?
- o I would suggest we:
 - drill intersection hole first under control conditions to ensure we are away from the 'possible' fault or major structure that exists to the immediate east (as indicated by topo);
 - drill portal entry holes (1, 2, 3, 4 and 5) second and in sequence.
- o Drill number 6 hole last.

(11)

- 2 -

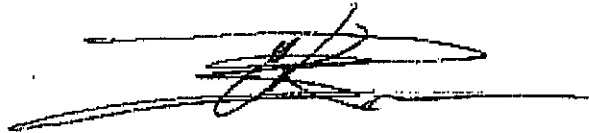
RE: Fax C. Benner - Dy Drilling
September 20, 1990

NOTE: It should be considered by Gregg to drill #6 or #5 with directional control and cased so that we can pump to the proposed settling basin via one of these holes.

I've walked the site (proposed portal and access road) and it is an excellent location; road will be no problem, excellent flat areas for laydown area; office; garage; etc.

Bill Dunn is arranging for your proposed portal location surveyed and road alignment. This is to be done ASAP.

For your information.



C.K. Benner

CKB/rg



**Curragh
Resources
Inc.**

117 Industrial Rd.
Whitehorse, Yukon Y1A 2T8
Tel: (403) 668-8021
Fax: (403) 668-6518

FAX COVER SHEET

Fax Number: (403) 668-6518
Telephone: (403) 668-8021

DATE: October 1 1990

TO: COLIN BENNER
FROM: G.A. JILSON

Number of Pages 2 @ including Cover Page.

Circulation and/or Comments:

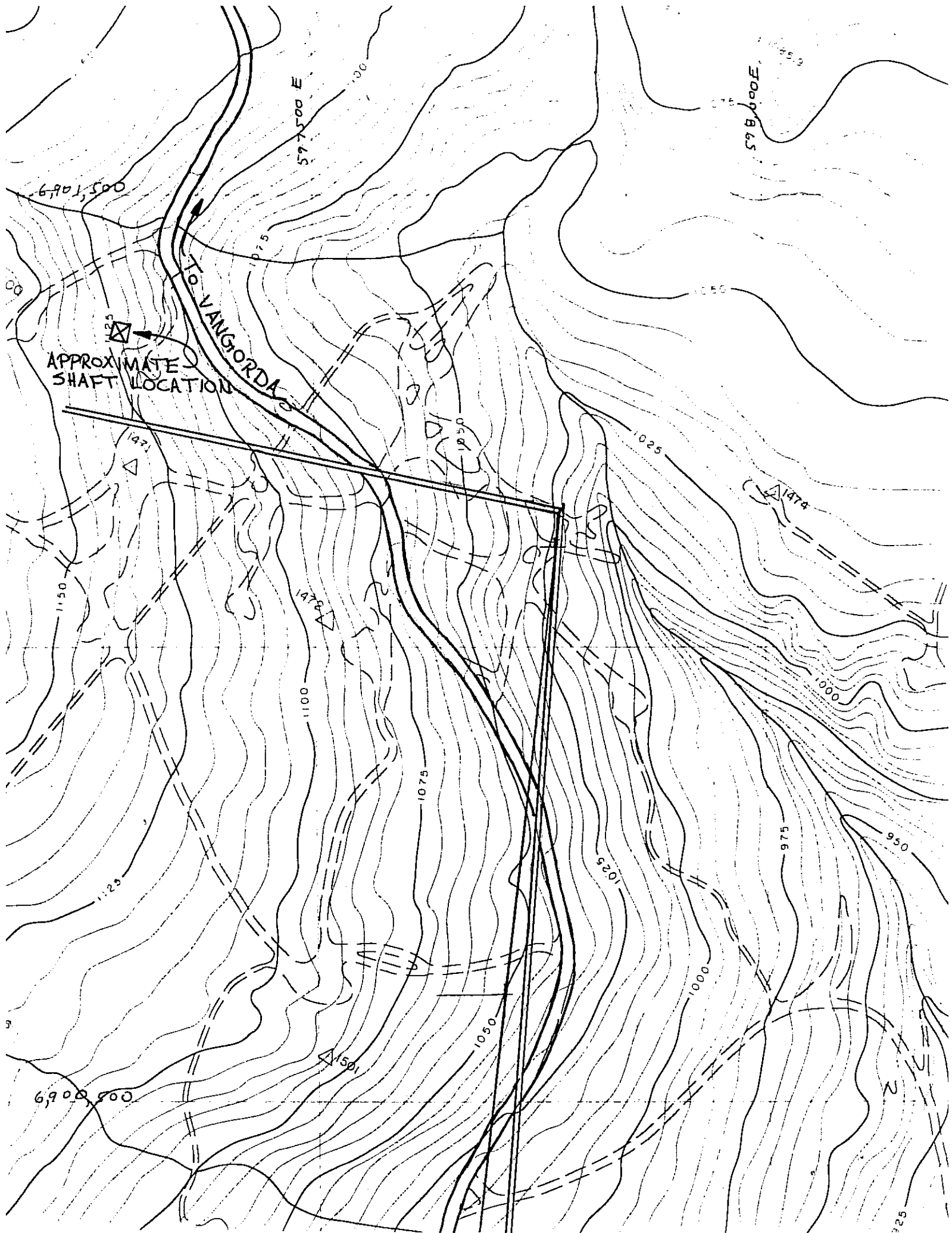
PLEASE NOTE SURVEY POSITION OF PORTAL

THE DECLINE, IF DONE THIS WAY WILL BE 2,064m long with a -9° plunge

THE ORIGINAL LOCATION CMD DESIGN PORTAL WAS 1,792m LONG with a -11.5° plunge

THE DIFFERENCE IS 272m or approximately three-quarters of a million dollars
OF EXTRA EXCAVATION.

If all pages were not received, please contact:



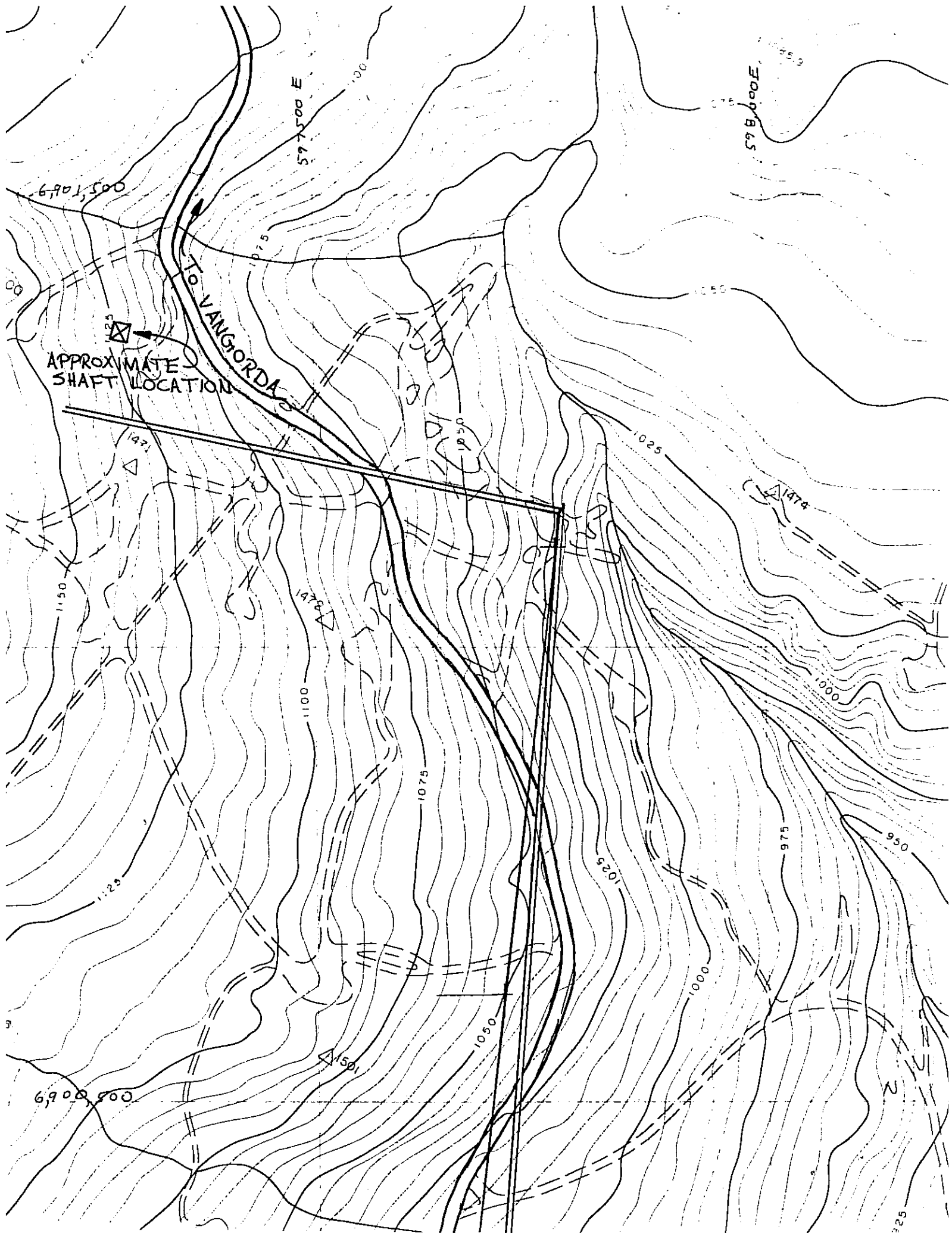
6901,500

597,500 E

598,000 E

APPROXIMATE
SHAFT LOCATION

TO VANGORDA



60

1471

1150

1478

1100

1075

1125

1150

1050

1025

1000

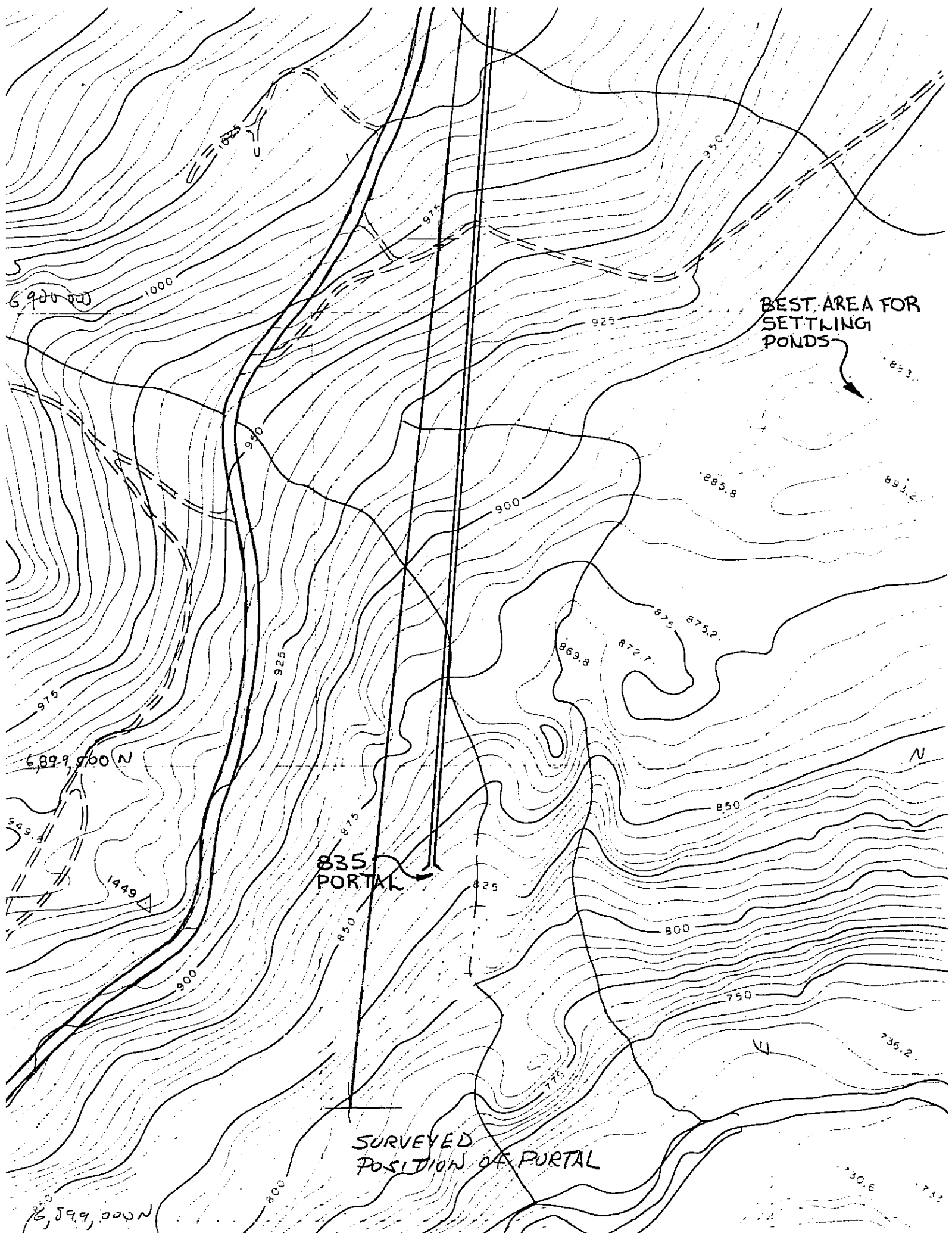
975

950

6900,500

2

925



BEST AREA FOR
SETTLING
PONDS

835
PORTAL

SURVEYED
POSITION OF PORTAL

6900.00

6899.900 N

6,599,000 N

1449

569.4

830.6

730.6

732

Hole # 2

6900074.271 N

597643.237

~ 965 m elev

965

648.082

Hole # 1

6901150.000 N

597770.000 E

1020 elev.

1792 -11.5°

2064 -9.0°

$\Delta = 272$



CANADIAN MINE DEVELOPMENT

FAX COVER LETTER

*Dy Deposit
Underground
Decline*

DATE SEPTEMBER 10, 1990 **FAX NO.** _____

TO GREG GILSON

COMPANY CURRAGH RESOURCES - WHITEHORSE

COPIES _____

FROM JIM PROUDEFOOT

COMMENTS _____

COPIES ALSO SENT TO

NO. OF PAGES BEING TRANSMITTED, INCL. THIS PAGE 4



CANADIAN MINE DEVELOPMENT
A Division of Hillsborough Resources Limited

120 Railroad Street
Brampton, Ontario
L6X 1G8

Business: 416-450-0784
Fax: 416-458-3784

RAMP COLLAR:

6899400 NORTH
597632 EAST

①

80m offset

BOTTOM RAMP:

6901150 NORTH
597770 EAST

② ②

NORTH WEST DRIFT:

6901310 NORTH
597025 EAST

①

30 m offset

1:2000

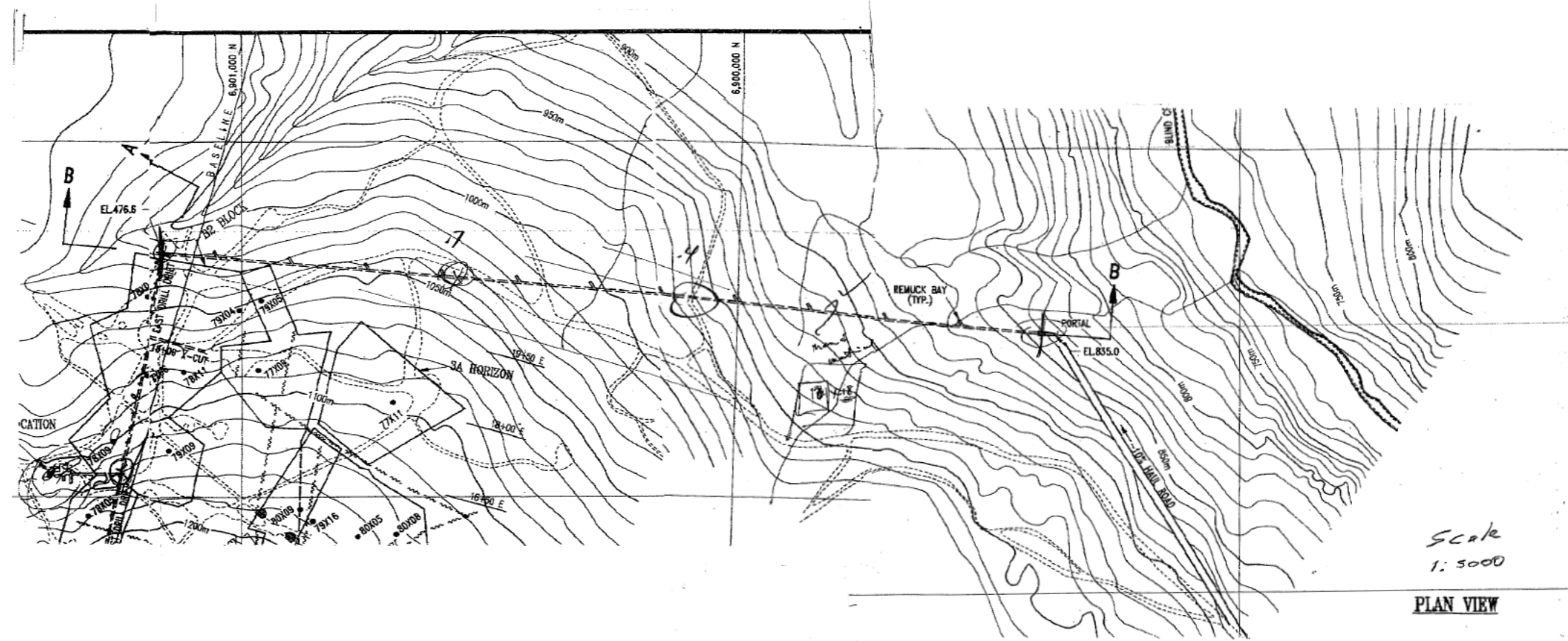
30 m offset

top #1190

300

600 8 pm
11.80
20.00
720,000 ft.

Δ 358.5



Scale
1: 5000

PLAN VIEW



CANADIAN MINE DEVELOPMENT
A Division of Hillsborough Resources Limited

120 Railroad Street
Brampton, Ontario
L6X 1G6

Business: 416-456-0734
Fax: 416-456-3754

DATE SEPTEMBER 11, 1990 FAX NO. _____

TO G. JILSON

COMPANY CURRAGH - WHITEHORSE

COPIES _____

FROM J. TATAK

COMMENTS RE: DY - RAMP TEST DRILLING

AS DISCUSSED WITH C.K. BENNER TODAY.

3 at Ciller

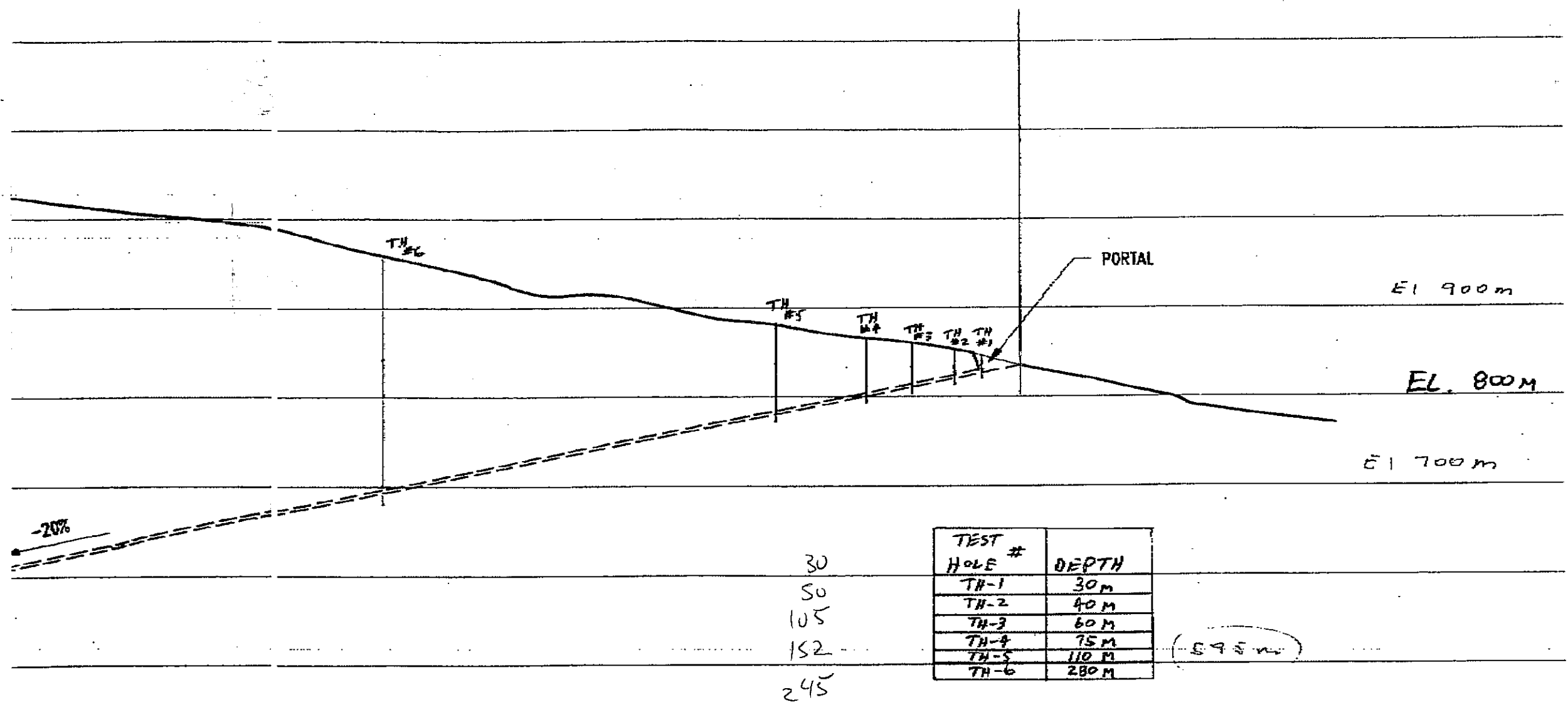
1 at Gwyn

REGARDS

COPIES ALSO SENT TO _____

NO. OF PAGES BEING TRANSMITTED, INCL. THIS PAGE 3

09/11/90 16:14 QND MINE DEVELOPMENT BRAMPTON



TEST HOLE #	DEPTH
TH-1	30m
TH-2	40m
TH-3	60m
TH-4	75m
TH-5	110m
TH-6	280m

30
50
105
152
245

LONGITUDINAL SECTION ALONG A-A & B-B

SCALE: 1:5000

Lamerton & Associates
Professional Surveyors Ltd.

Suite 200, Burns Building
106 Main Street
Whitehorse, Yukon, Y1A 2A8
Phone: (403)-667-6664 Fax: (403) 668-7236

Date: Sept 30/90

3 Pages + Cover

To: Greg Jilson
Carragey, Whitehorse

Office Phone: _____

FAX # 668-6518

Comments: Copy of Material sent to
Bill Dean on Dye Portal.

G. L.
Glen W. Lamerton, CLS
Lamerton & Associates

Lamerton & Associates
Professional Surveyors Ltd.
Suite 200 106 Main Street
Whitehorse, Yukon Y1A 2A8
667-6664 FAX: 668-7236

September 28, 1990

Bill Dunn, P. Eng.
Chief Engineer
Curragh Resources Inc.
PO Box 1000
Faro, Yukon Y0B 1K0
994-2600 ext. 239

Our File: 1391

3 Pages

FAX: 994-2664

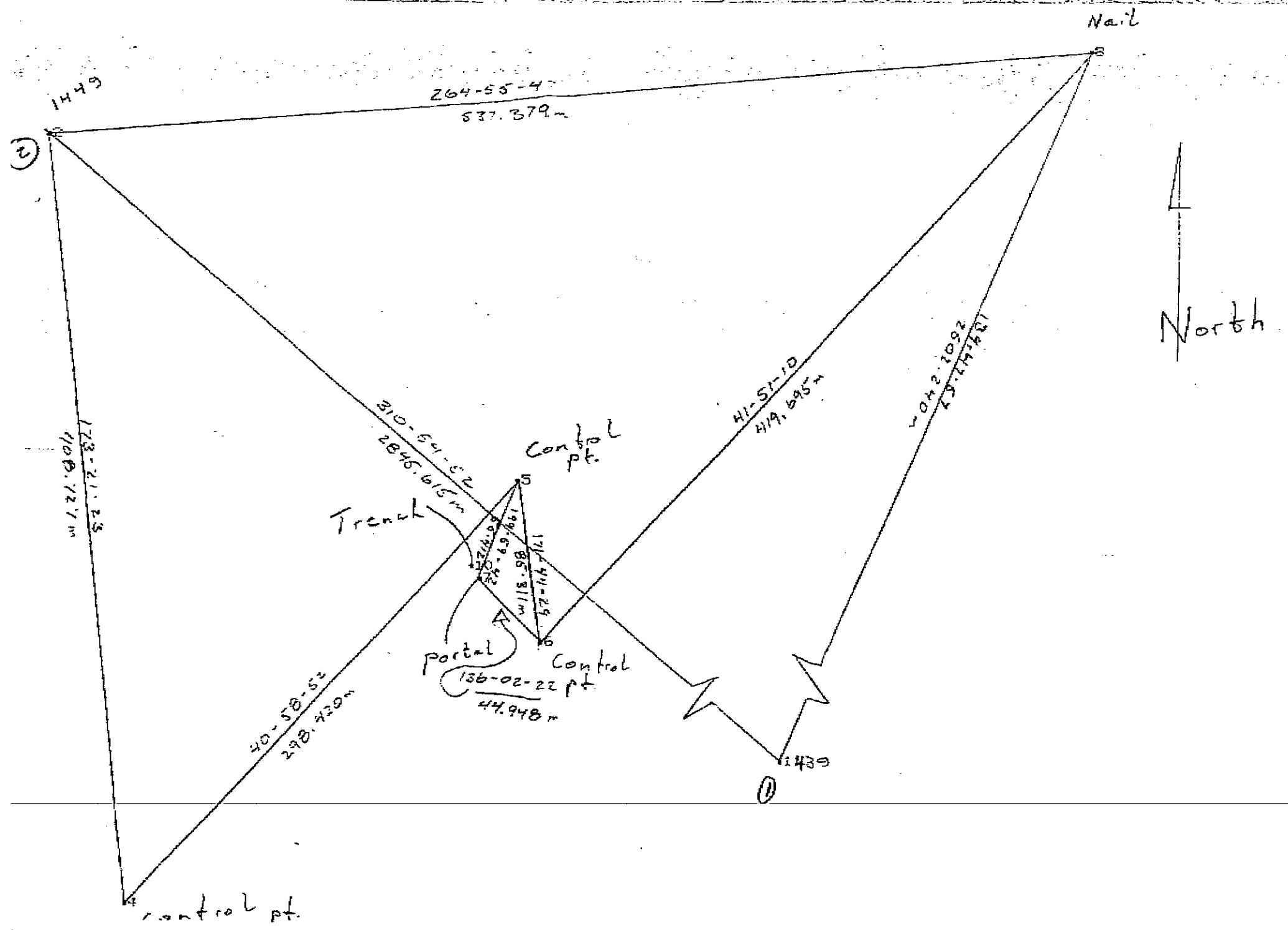
RE: Traverse to Dye Portal, Trench Coordinates

Please find enclosed a sketch, coordinate listing and traverse data in UTM Coordinates for the Dye Portal Traverse. The traverse started at monument 1439, station 1 on our traverse, and using a scale factor of .9995844 produced the enclosed coordinates. Bearing and distance from station 7 to 10 (Trench) is 324 59' 42" at 7.99 metres.

Yours Truly,



Glen W. Lamerton, CLS



JNT	NORTHING	EASTING	ELEV	CODE
1	6897494.701	599458.084	1266.526	1439
2	6899358.383	597307.686	935.430	1449
3	6900432.450	597666.161	1021.266	
4	6898952.401	597354.973	823.599	
5	6899177.687	597550.680	813.416	
6	6899093.260	597562.934	790.567	
7	6899125.615	597531.733	799.360	portal
8	6899405.875	597842.963	846.207	
10	6899132.001	597527.260		

1	310-54-52	2845.615	6899358.383	597307.686	2
2	173-21-23	408.727	6898952.401	597354.973	4
4	040-58-52	298.420	6899177.687	597550.680	5
5	199-59-42	55.412	6899125.615	597531.733	7
5	171-44-29	85.311	6899093.260	597562.934	6
7	136-02-22	44.948	6899093.260	597562.934	6
6	041-51-10	419.695	6899405.875	597842.963	8
8	139-47-57	2502.240	6897494.701	599458.084	1
8	264-55-47	597.379	6899358.383	597307.686	2