

003427



Anvil Range
MINING CORPORATION

117 Industrial Road, Whitehorse, Yukon Y1A 2T8
Telephone (403)633-5588 Facsimile (403)668-6518

FAXED
Nov 7 1996

INTER-OFFICE MEMORANDUM

To: Derek Condie, Purchasing Supervisor **Date:** November 7, 1996

cc: Dick Arndt, Superintendent, Exploration Projects

From: Douglas J. Brownlee

Subject: Contract for Diamond Drilling, Grizzly East

Derek

Attached is the original request for tenders, the following is in a similar format so that you can identify the changes (italicised and underlined) readily.

Core Size:	NQ
Reduction of Core:	Cost of reducing to BQ if conditions so warrant
Amount of Drilling:	Minimum 3 holes for <u>1,000 metres, see attached plan.</u> Maximum 5 holes for a maximum of <u>2,400 metres</u>
Overburden:	Maximum 100 to 120 metres expected
Water:	300 to 500 metres, 25 metres lift, <u>include cost of water truck and how it is to be manned, if required</u>
Other Equipment:	D7 or similar for drill moves, <u>drill pads and roads already constructed, any extensive modifications to drill pads and roads to be approved prior by Anvil representative.</u>
Access:	4x4 road/cat road, <u>30 minute drive from Faro along Blind Creek Road.</u>
<u>Mob/demob site</u>	<u>This site to be approximately 18 km from Faro or 10 km from Grum along the Blind Creek Road (site for unloading is the Portal turnoff), see attached plans.</u>
Room & Board:	Available at \$55 per day per person
Fuel:	Diesel, Gasoline, Propane supplied by Anvil
Core Boxes:	Contractor supplied, <u>Anvil account</u>
Expediting:	Contractor responsibility, <u>contractor account</u>
<u>Cold Weather</u>	<u>How will standby be handled if weather forecast indicates -40 deg C or colder for more than 3-4 days and shut down is warranted?</u>

Any questions please contact us in Whitehorse. Please email the initial contract to us at armdjb@yknet.yk.ca.



Anvil Range

MINING CORPORATION

117 Industrial Road, Whitehorse, Yukon Y1A 2T8
Telephone (403)633-5588 Facsimile (403)668-6518

INTER-OFFICE MEMORANDUM

To: Derek Condie, Purchasing Supervisor **Date:** September 25, 1996
cc: Dick Arndt, Superintendent, Exploration Projects
From: Douglas J. Brownlee
Subject: Tenders for Diamond Drilling, Grizzly East

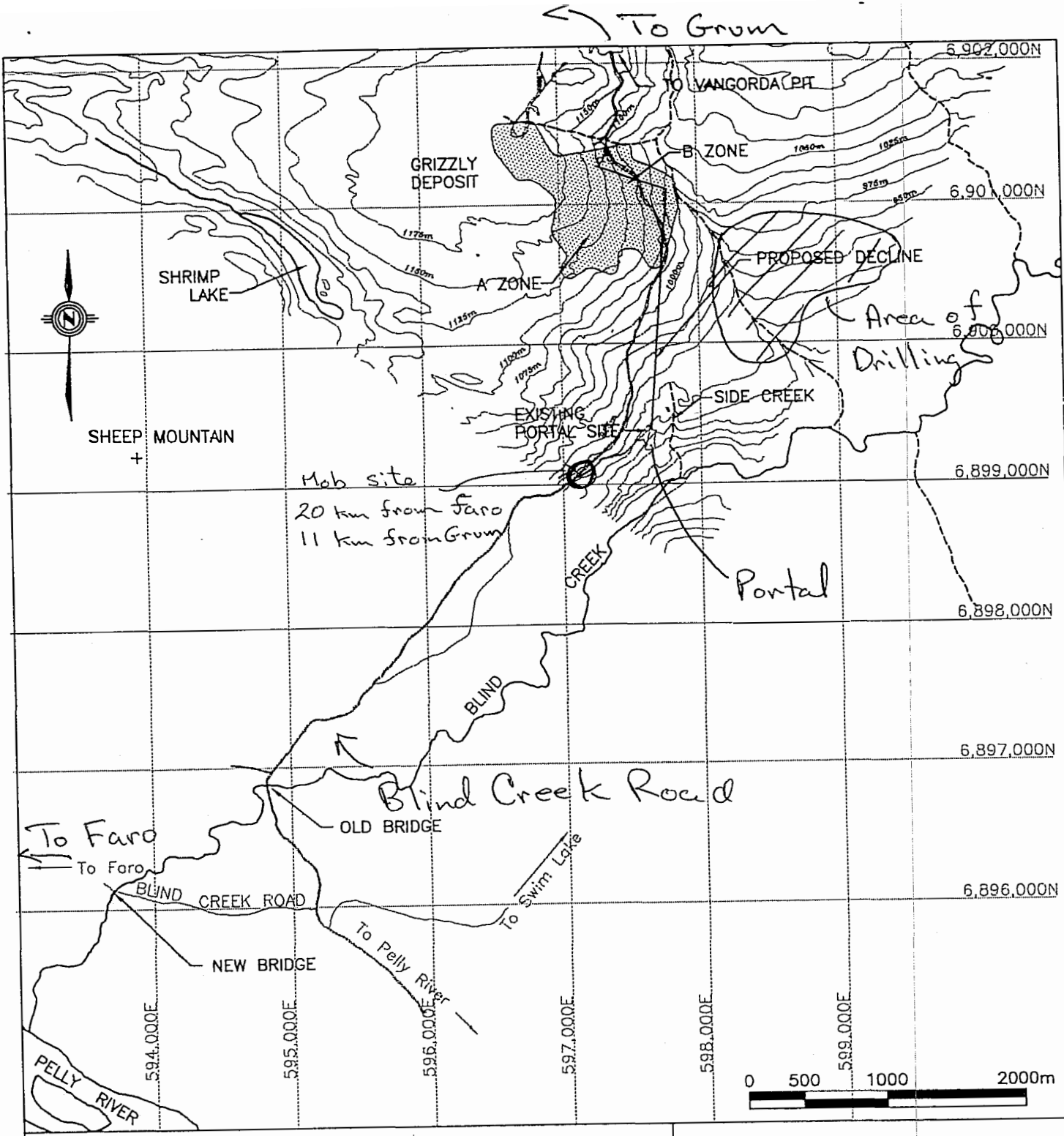
Derek

Would you please ask for diamond drilling bids based upon the following information:

Core Size:	NQ
Reduction of Core:	Cost of reducing to BQ if conditions so warrant
Amount of Drilling:	Minimum 3 holes for 1,500 metres Maximum 4 holes for a maximum of 2,000 metres
Overburden:	Maximum 100 to 150 metres expected
Water:	300 to 500 metres, 25 metres lift
Other Equipment:	D7 or similar for road and pad construction and drill moves
Access:	4x4 road/cat road
Room & Board:	Available at \$55 per day per person
Fuel:	Diesel, Gasoline, Propane supplied by Anvil
Core Boxes:	Contractor supplied
Expediting:	Contractor responsibility

The following drilling companies are suggested

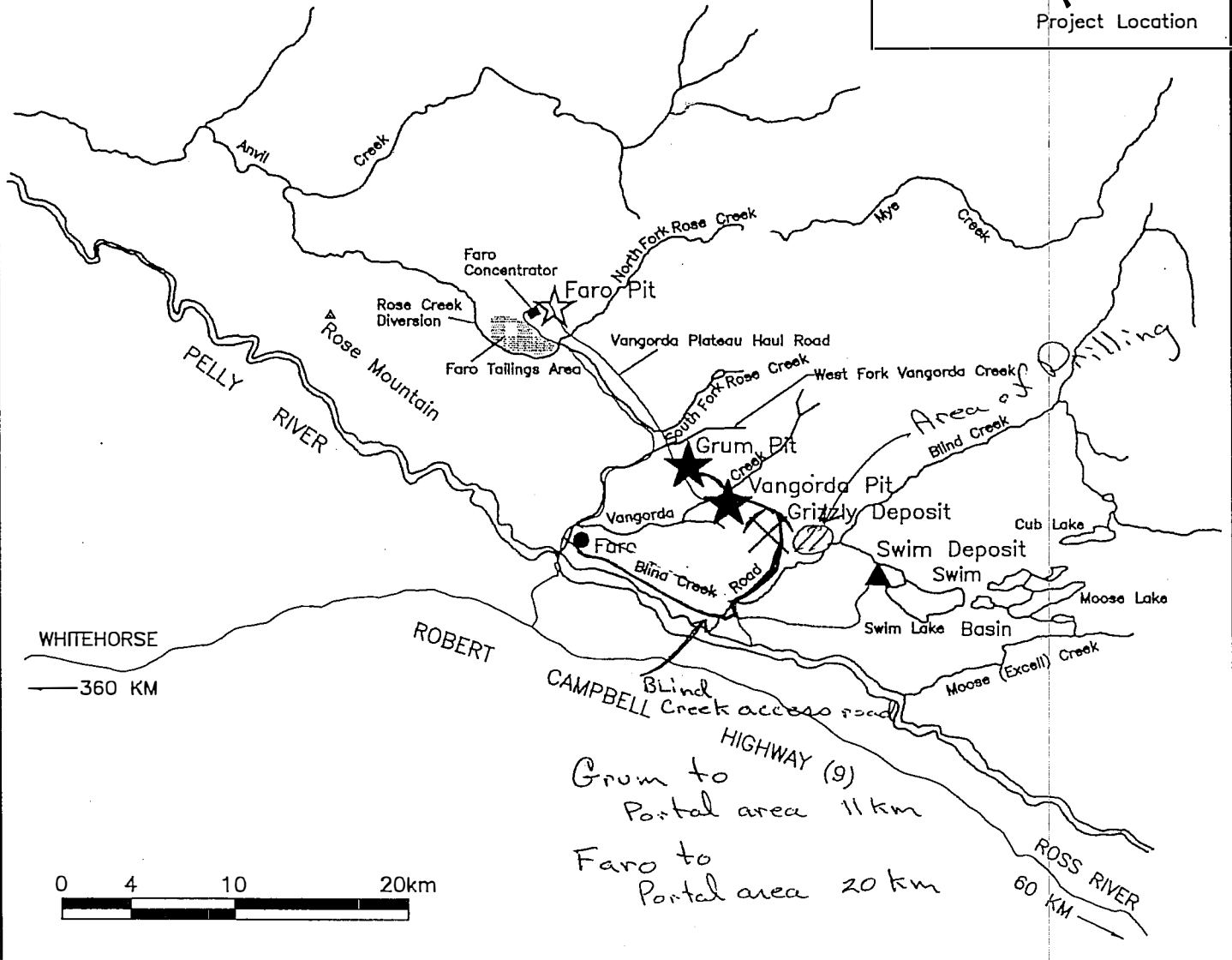
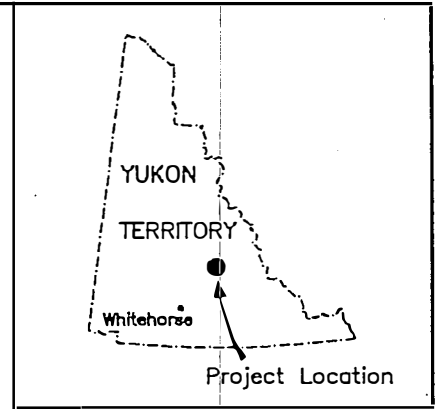
Advanced Drilling Ltd.	Vancouver, B.C.
J.T. Thomas Drilling Ltd.	Smithers, B.C.
Midwest Drilling	Base office in Yellowknife
Conners Drilling	Kamloops/Calgary



Anvil Range
MINING CORPORATION

APPROVED

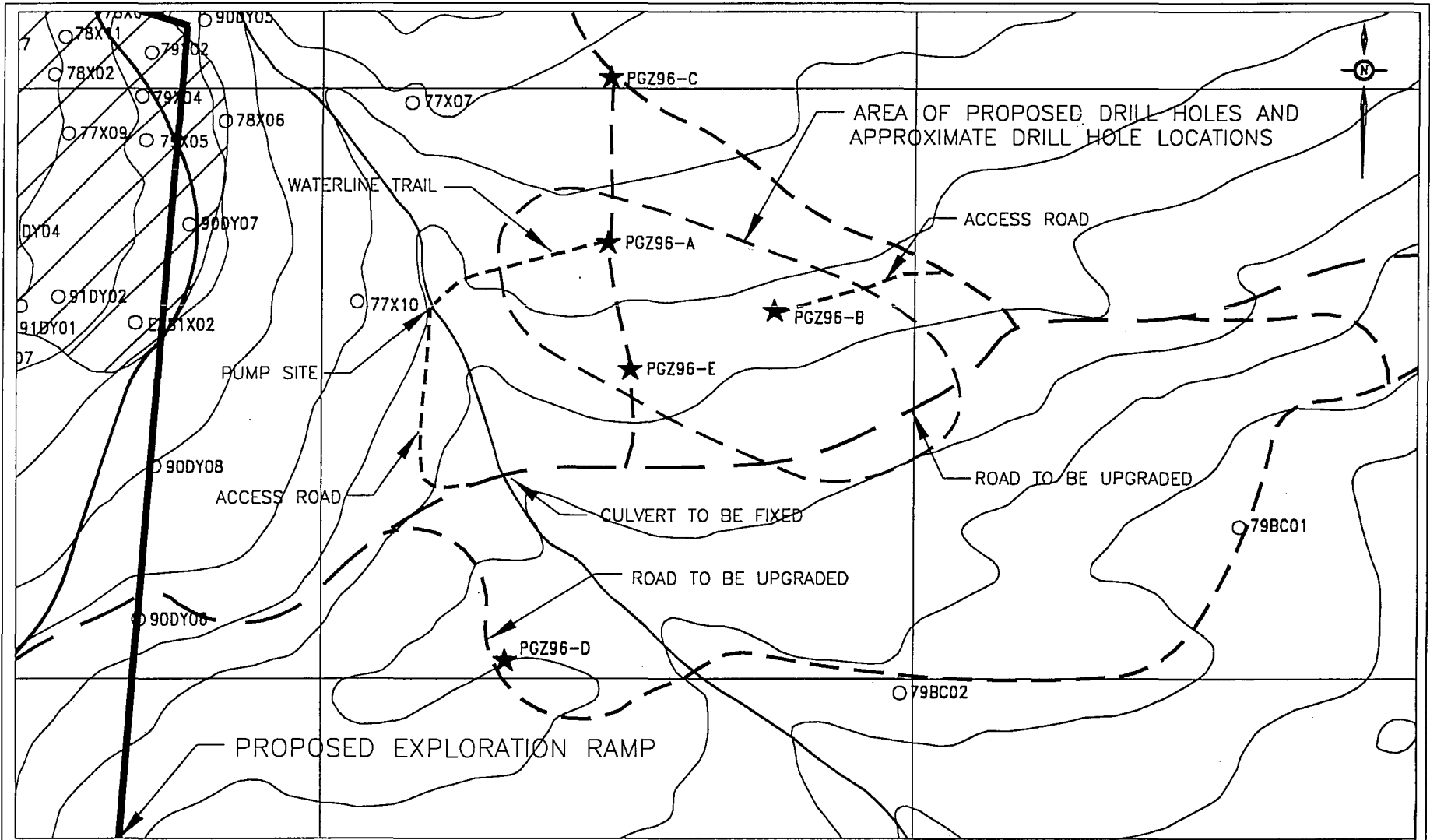
96/09



Anvil Range
 MINING CORPORATION

APPROVED

96/09

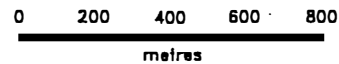


LEGEND

- Road
- - - Trail
- Track
- River
- Minor Contour
- Major Contour
- ★ PGZ96-B Proposed DDH

**SEQUENCE OF HOLES
DEPENDENT ON RESULTS**

- | | |
|---------|---------|
| PLAN A | PLAN B |
| PGZ96-A | PGZ96-A |
| PGZ96-B | PGZ96-B |
| PGZ96-C | PGZ96-D |
| PGZ96-D | |
| PGZ96-E | |



**ANVIL RANGE
MINING CORPORATION**

**GRIZZLY EAST
PROPOSED 1996 EXPLORATION
DRILLHOLE PLAN**

SCALE: 1:10,000 | FILE: GRIZEXPL.OWD | DATE: 98.10.27
DRAWN: H.D. STIRLING | CHECKED: | FIGURE