

CURRAGH RESOURCES INC.

003723

117 Industrial Road
Whitehorse, Yukon
Y1A 2T8

Tel: (403) 668-8021
Fax: (403) 668-6518

TELEFAX TRANSMISSION

TO: GREGG TILSON

FROM: JANET
WHITEHORSE OFFICE

John Z
you 15 Dec
7 Jan

DATE: Nov 20-90 TIME: _____

SUBJECT: Dy Sample - 1976-1981

Σ length = A = 2512 m down to 0.2% comb
Total = ^{8"} 1709 samples (includes 3 with no assays)

$\geq 8\%$ Zn+Pb = 349 ^{= 465.5 m} samples. +98 = 294 samples
 Σ length of B = 385.4 m
254 between 5-8%

Nov 20 AM is at 1100' going to Target E ^{ready} and finished
gyro crew coming in may do 120' more abtr
Target C at 200' ^{gyro}

Target E [0-119 = 580/586, 119-422 500/580, 422-1100 = 580/586, 835-925 strongly bk]

If all pages are not received, please contact 668-8021

**THIS TRANSMISSION CONSISTS OF 1 PAGE(S)
(including cover page)**

Nov 20 PM Target C is at 700' Target E is as above

CURRAGH RESOURCES INC.

117 Industrial Road
Whitehorse, Yukon
Y1A 2T8

Tel: (403) 668-8021
Fax: (403) 668-6518

TELEFAX TRANSMISSION

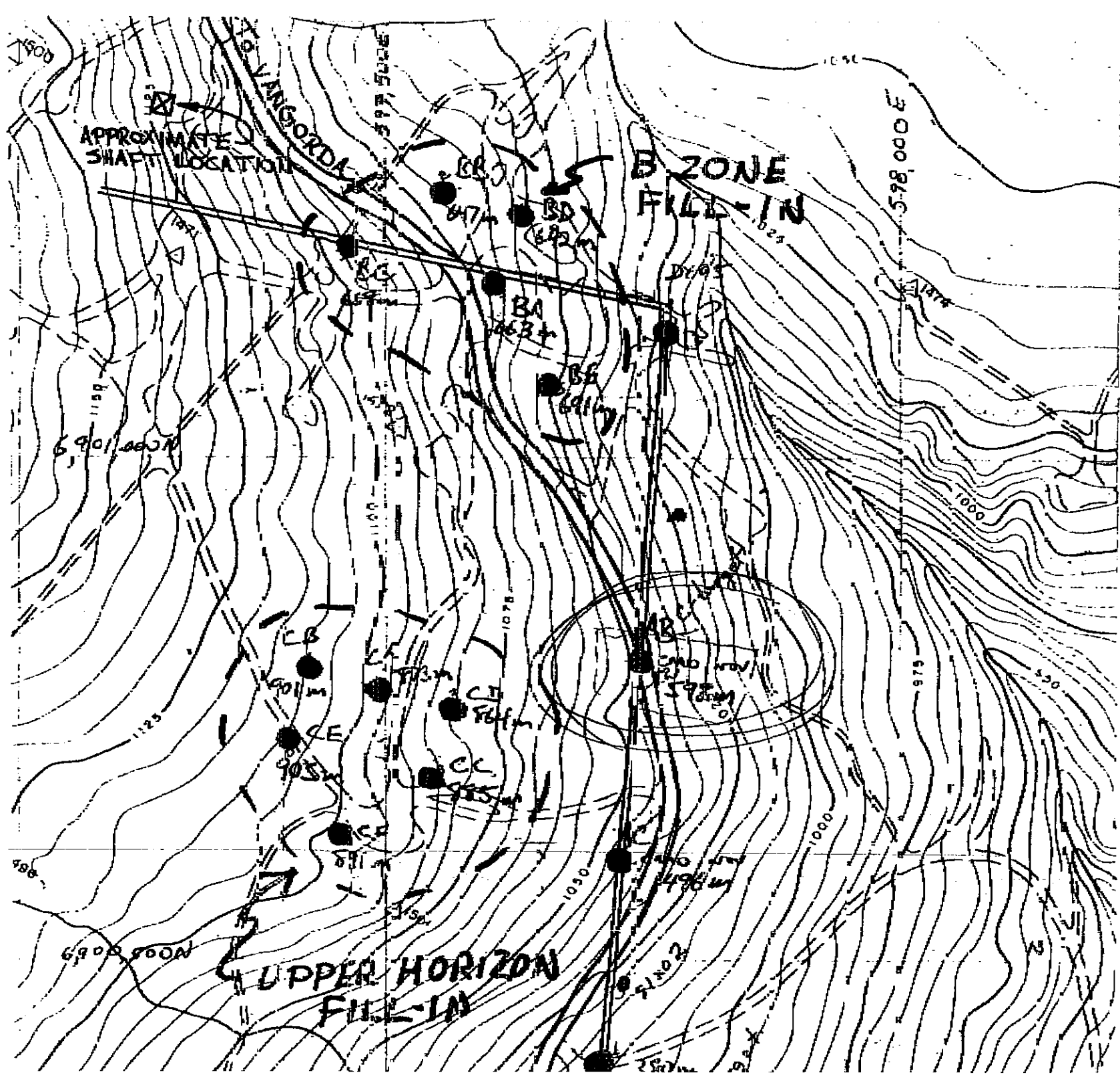
TO: Gregg Tilson

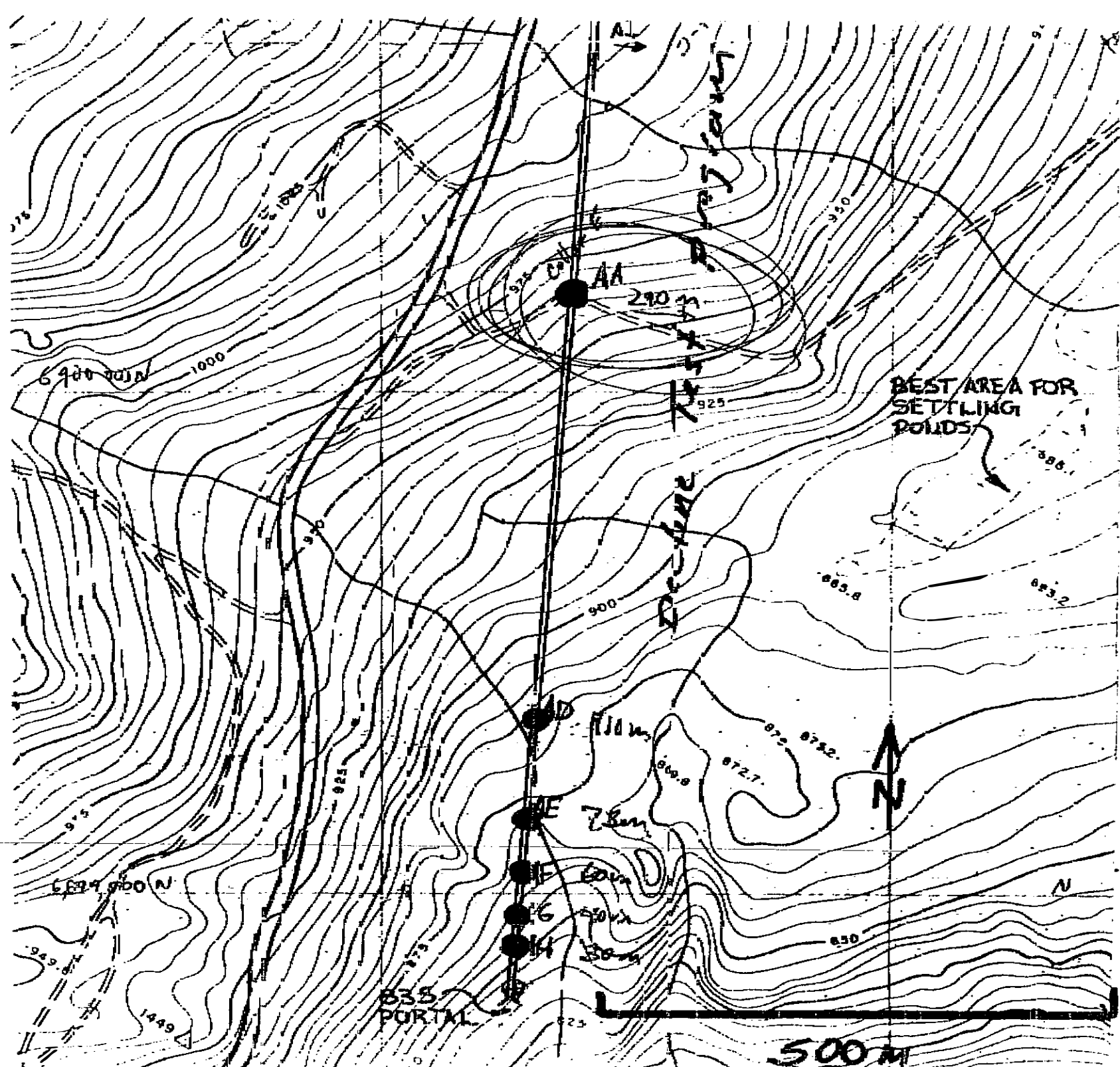
FROM: T Janet

WHITEHORSE OFFICE

DATE: Nov 13-90 TIME: _____

SUBJECT: _____
John is moving one drill to "AA" and
second drill (from pilot hole) to "AB"





DY PROPERTY

DDH-#	UTM-NORTHING	UTM-EASTING	ELEVATION	LENGTH
1978 - 1981 DRILLING				
76X21	901,428.0	596,612.4	1,192.3	774.9
77X01	901,505.0	596,686.4	1,185.5	774.9
77X02	901,581.0	596,844.5	1,183.0	736.9
77X03	901,348.0	596,876.0	1,188.5	844.3
77X05	901,296.0	597,116.1	1,161.2	879.4
77X06	901,158.4	597,593.3	1,075.2	801.0
77X07	900,968.0	596,165.4	1,015.6	492.2
77X08	901,412.0	597,699.1	1,046.2	991.2
77X09	900,896.0	597,591.4	1,081.0	836.0
77X10	900,633.0	598,073.1	961.4	451.7
77X11	900,624.0	597,509.1	1,091.1	913.1
77X04	901,169.0	596,709.0	1,185.8	850.1
78X01	901,232.0	597,306.6	1,127.3	850.1
78X02	901,014.0	597,559.3	1,083.7	807.7
78X03	901,307.0	597,631.3	1,057.7	876.3
78X04	901,123.0	597,733.6	1,039.1	675.0
78X05	901,302.0	597,325.3	1,113.9	711.3
78X06	900,937.0	597,848.4	1,008.1	876.3
78X07	901,409.0	597,041.1	1,169.1	876.3
78X08	901,531.0	596,780.8	1,179.5	876.3
78X09	901,265.0	597,475.4	1,083.3	684.2
78X10	901,374.0	597,344.1	1,106.3	705.0
78X11	901,080.0	597,581.8	1,072.1	716.2
79X01	901,160.0	597,289.3	1,136.0	772.2
79X02	901,048.0	597,720.6	1,036.4	683.8
79X03	901,019.0	597,251.5	1,140.0	956.7
79X04	900,977.0	597,708.8	1,042.8	689.1
79X05	900,902.0	597,714.5	1,048.4	754.3
79X06	901,129.0	597,124.1	1,161.7	956.7
79X07	901,180.0	597,665.0	1,052.7	792.7
79X08	901,342.0	597,181.0	1,146.5	956.7
79X09	901,124.0	597,432.3	1,105.2	795.3
79X11	901,057.0	597,102.9	1,163.0	971.1
79X12	901,166.0	596,987.6	1,175.5	971.1
79X13	900,819.0	597,200.5	1,138.5	1,014.9
79X14	900,987.0	597,083.6	1,164.5	955.5
79X15	901,483.0	597,053.9	1,158.6	955.5
79X16	900,726.0	597,303.1	1,118.5	910.1
79X17	901,308.0	597,533.6	1,069.4	669.6
79X18	900,920.0	597,223.1	1,141.8	892.1
80X01	901,082.0	596,975.1	1,174.7	955.5
80X02	900,721.0	597,167.8	1,130.0	921.9
80X03	901,571.0	596,623.9	1,186.3	955.5
80X04	900,862.0	597,060.4	1,151.9	1,009.1
80X05	900,811.0	597,291.5	1,109.3	1,067.5
80X06	900,560.0	597,171.1	1,116.8	1,099.3
80X07	900,526.0	597,433.1	1,088.0	938.4
80X08	900,521.0	597,266.9	1,101.8	985.4
80X09	900,811.0	597,344.9	1,120.1	955.8
80X10	900,462.3	597,151.4	1,110.0	1,040.2

Note:
length in metres.

DY PROPERTY

DDH-#	UTM-NORTHING	UTM-EASTING	ELEVATION	LENGTH
80X11	900,910.1	597,374.8	1,120.4	917.4
80X12	900,670.9	597,017.8	1,137.3	1,040.2
80X13	900,410.3	597,385.9	1,066.0	914.7
EA81X01	900,426.3	597,237.8	1,090.3	995.9
EA81X02	900,514.1	597,734.1	1,026.7	828.1
EA81X03	900,365.6	597,073.4	1,104.6	1,047.5

*Note: Length in
meters.*

1976 - 1981 DRILLING

SUBTOTAL	56 DRILLHOLES	48,370.2
----------	---------------	----------

1989 - 1990 DRILLING

89DS-01	901,388.5	597,335.6	1,105.8	452.0
89DS-02	901,358.9	597,337.9	1,107.8	392.3
90DY01	901,399.4	597,347.3	1,100.3	139.3
90DY02	901,355.1	597,367.9	1,096.9	149.4
90DY03	901,328.0	597,286.0	1,120.6	160.0
90DY04DS	901,369.5	597,305.0	1,115.3	662.3
90DY05	901,115.0	597,798.0	1,022.0	640.0

1989 - 1990 DRILLING

SUBTOTAL	7 DRILLHOLES	2,595.3
----------	--------------	---------

PROPOSED DRILLING

AA	900,098.9	597,687.0	963.3	290.0
AB	900,810.0	597,745.0	1,045.0	600.0
AC	900,593.0	597,732.0	1,039.0	496.0
AD	899,673.9	597,653.6	884.4	110.0
AE	899,574.4	597,645.8	874.2	75.0
AF	899,519.1	597,641.4	865.0	60.0
AG	899,474.6	597,637.9	860.4	40.0
AH	899,444.8	597,635.6	854.9	30.0
AI	900,394.0	597,702.0	1,012.0	380.0
A-TARGET	901,255.0	597,282.0	1,132.0	850.0
BA	901,172.0	597,607.0	1,068.0	663.0
BB	901,266.0	597,555.0	1,069.0	647.0
BC	901,212.0	597,462.0	1,094.0	666.0
BD	901,245.0	597,627.0	1,057.5	642.0
BE	901,069.0	597,658.0	1,052.0	691.0
CA	900,770.0	597,495.0	1,097.5	873.0
CB	900,791.0	597,423.0	1,109.0	901.0
CC	900,681.0	597,546.0	1,086.0	885.0
CD	900,749.0	597,568.0	1,080.0	864.0
CE	900,720.0	597,403.0	1,108.0	905.0
CF	900,630.0	597,456.0	1,099.0	891.0
P-COLLAR	899,400.0	597,632.0	843.4	0.0

PROPOSED DRILLING

SUBTOTAL	21 DRILLHOLES	11,461.0
----------	---------------	----------

TOTAL	84 DRILLHOLES	62,426.5
-------	---------------	----------