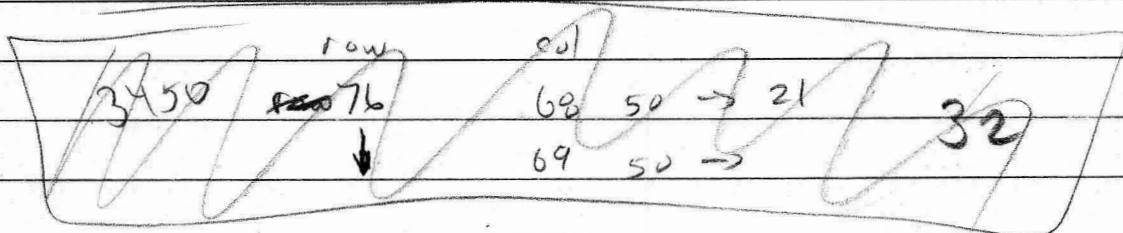


South central Sector

- | | | | | |
|-------------------------|---------|--------|---|-----------------------|
| 1) <u>29</u> Bench 3510 | row: 77 | col 76 | ✓ | rock type 40 (90F-13) |
| 2) <u>30</u> Bench 3490 | row 76 | col 76 | ✓ | rock type 50 |
| 3) <u>31</u> Bench 3470 | row 77 | col 80 | ✓ | rock type 50 |
| 4) <u>32</u> Bench 3450 | row 73 | col 83 | ✓ | rock type 40 |
| 5) <u>33</u> Bench 3430 | row 69 | col 86 | ✓ | rock type 21 |

Southwest Sector

- | | | | | |
|----------------------------|--------|--------|---|--------------|
| P. 1) <u>31</u> Bench 3510 | row 84 | col 41 | ✓ | rock code 50 |
| 2) <u>30</u> Bench 3490 | row 77 | col 42 | ✓ | rock type 23 |
| 3) <u>31</u> Bench 3470 | row 78 | col 41 | ✓ | rock-type 50 |
| 4) <u>32</u> Bench 3450 | row 80 | col 41 | ✓ | rock type 40 |
| 5) <u>33</u> Bench 3430 | row 80 | col 57 | ✓ | rock type 21 |



Northwest Sector

- 291) Bench 3510 : row 73 col 42 rock code 50 ✓
302) Bench 3490 : row 65 col 47 rock code 50 ✓
313) Bench 3470 row 60 col 43 rock code 50 ✓
324) Bench 3450 row 71 col 40 rock code 23 ✓
335) Bench 3430 row 60 col 42 rock code 50 ✓

North central Sector

- redo → 291) Bench 3510 : row 62 col: 73 rock code 60 ✓
302) Bench 3490 : row 59 col: 59 rock code 50 ✓
313) Bench 3470 row 60 col 60 rock code 50 ✓
324) Bench 3450 row 62 col 59 rock code 32 (??) ✓
335) Bench 3430 row 61 col 61 rock code 50 ✓

North east Sector

- ✓ 39 1) Bench 3510: row 57 col 83 rack code 40
- 30 2) Bench 3490 row 56 col ~~79~~ rack code 50
- 31 3) Bench 3470 row 57 col 89 rack code 40
- 32 4) Bench 3450 row 59 col 91 rack code 21
- 33 5) Bench 3430 row 52 col 83 rack code 50

col

