

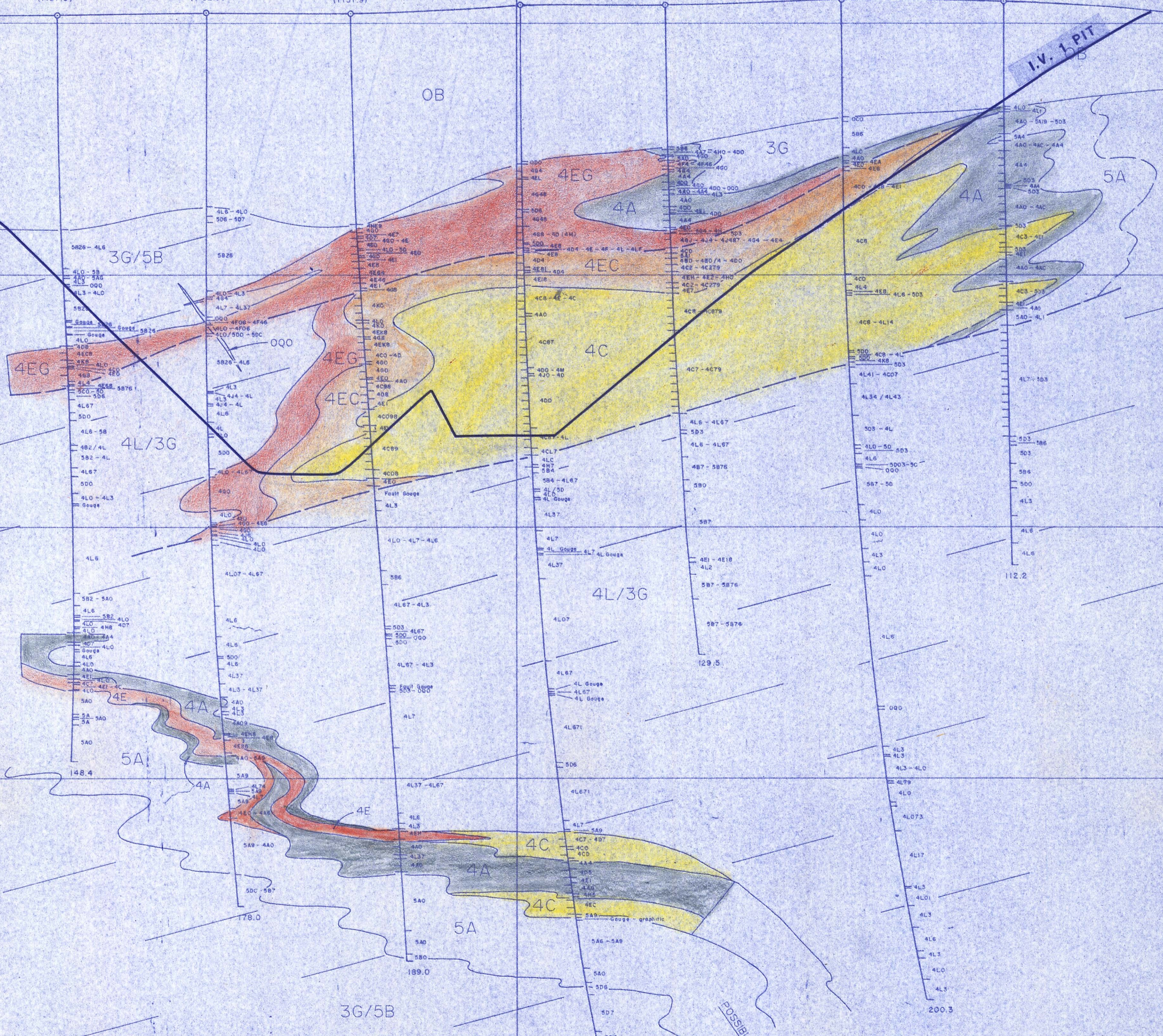
9800E 9850E 9900E 9950E B.L. 1000E 10050E 10100E 10150E 10200E

ELEVATION 1,150 m V 64 (1151.5) V 320 (1151.5) V 53R (1152.3) V 302 (1151.9) V 45R (1153.8) V 303 (1153.8) V 18R (1155.0) V 317 (1154.5) 1,150 m

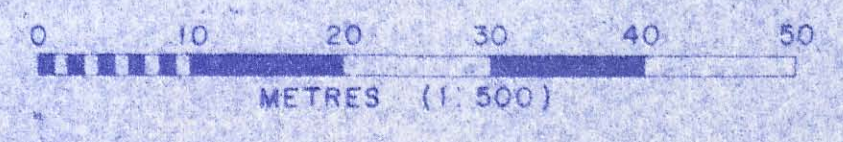
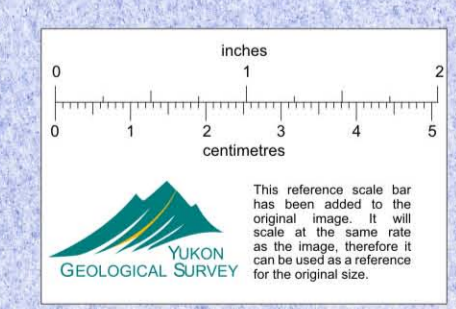
1,100 m 1,100 m

1,050 m 1,050 m

1,000 m 1,000 m



LEGEND		
ROCK UNIT	DESCRIPTION	86-07 MINE MODEL ROCK CODE
OB	Overburden	11
QFBX	Iron cemented overburden	11
Q00	Quartz vein	10
5B	Generally calcareous phyllite - Vangorda formation	10
5A	Carbonaceous phyllite	10
4A	Ribbon banded "graphitic" pyritic quartzite	1
4C	Pyritic quartzite	2
4EC	Quartz rich massive to semi-massive pyritic sulphides	3
4E	Pyritic massive sulphides	4
4EG	Variably baritic massive pyritic sulphides (50% 4E & 50% 4G)	5
4H	Pyrrhotitic massive sulphides	6
4L	Altered, variably bleached generally non-calcareous phyllite	10
3G	Generally non-calcareous phyllite - Mt. Mye formation	10



CURRAGH RESOURCES		
VANGORDA DEPOSIT		
8E		
DATE: JUNE 1986	NTS: 105-K-3 & 6	DWG. NO.
BY: J. G. J.	WHITEHORSE M.D.	004146