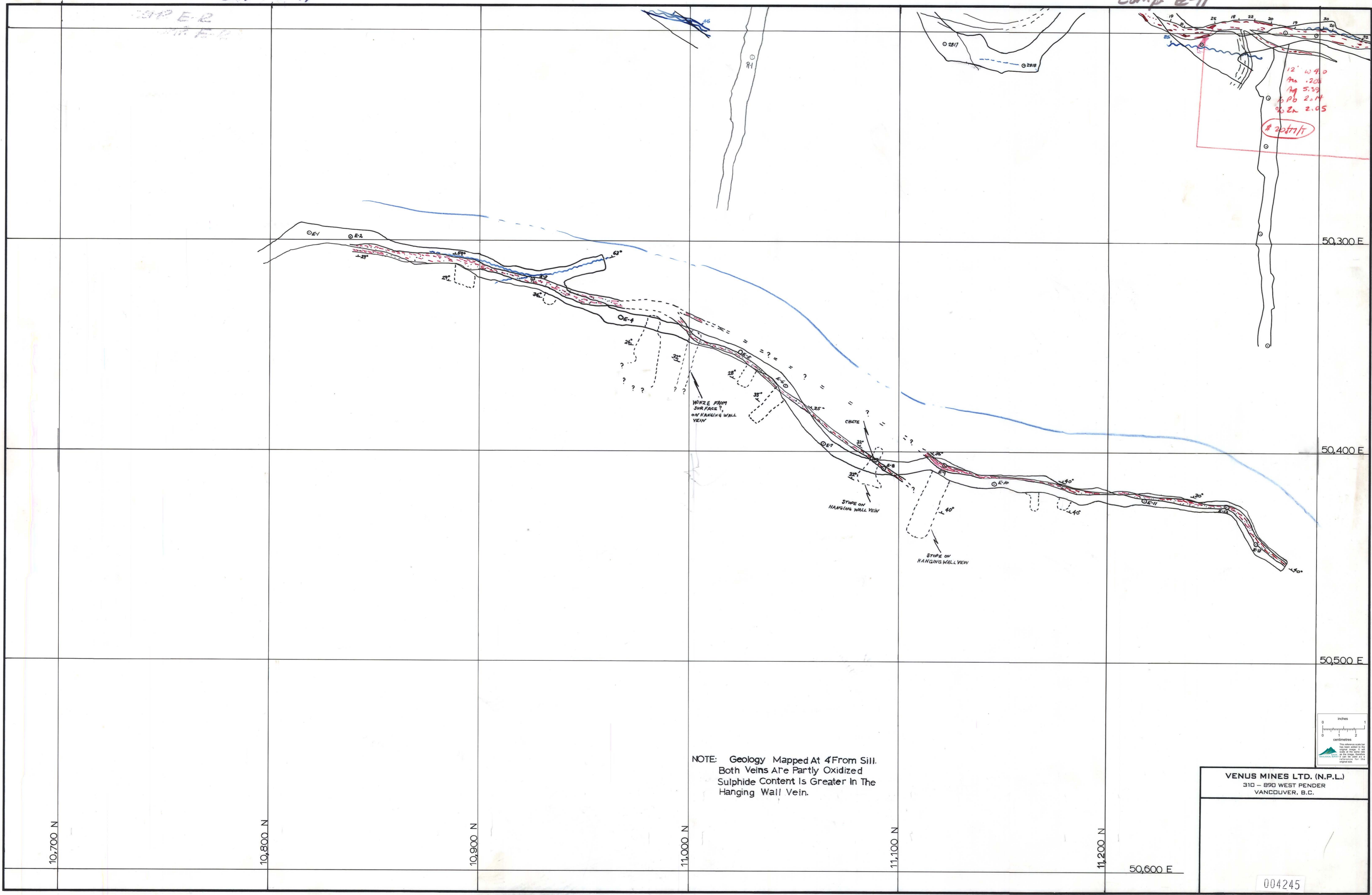


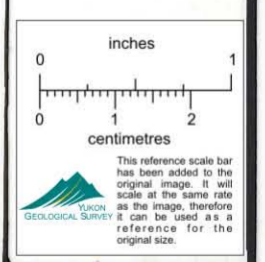
COMP-E-11

Comp E-11

COMP E-2
COMP E-11



NOTE: Geology Mapped At 4' From Sill.
 Both Veins Are Partly Oxidized
 Sulphide Content Is Greater In The
 Hanging Wall Vein.



VENUS MINES LTD. (N.P.L.)
 310 - 890 WEST PENDER
 VANCOUVER, B.C.

004245