





# 1134 DD ASSAY

RAMP TO 1196

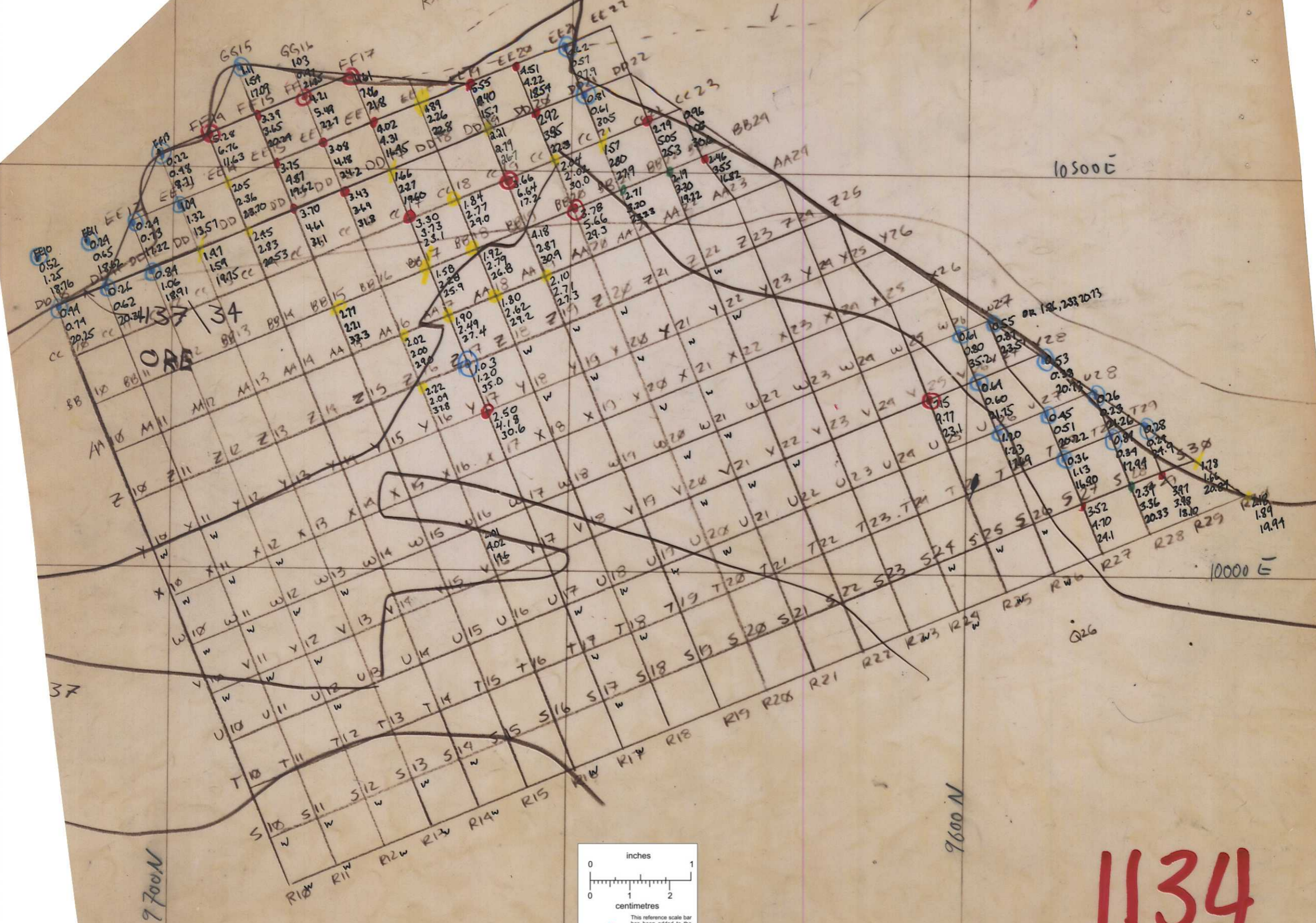
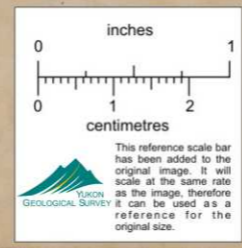
10500 E

10000 E

9700 N

9600 N

# 1134



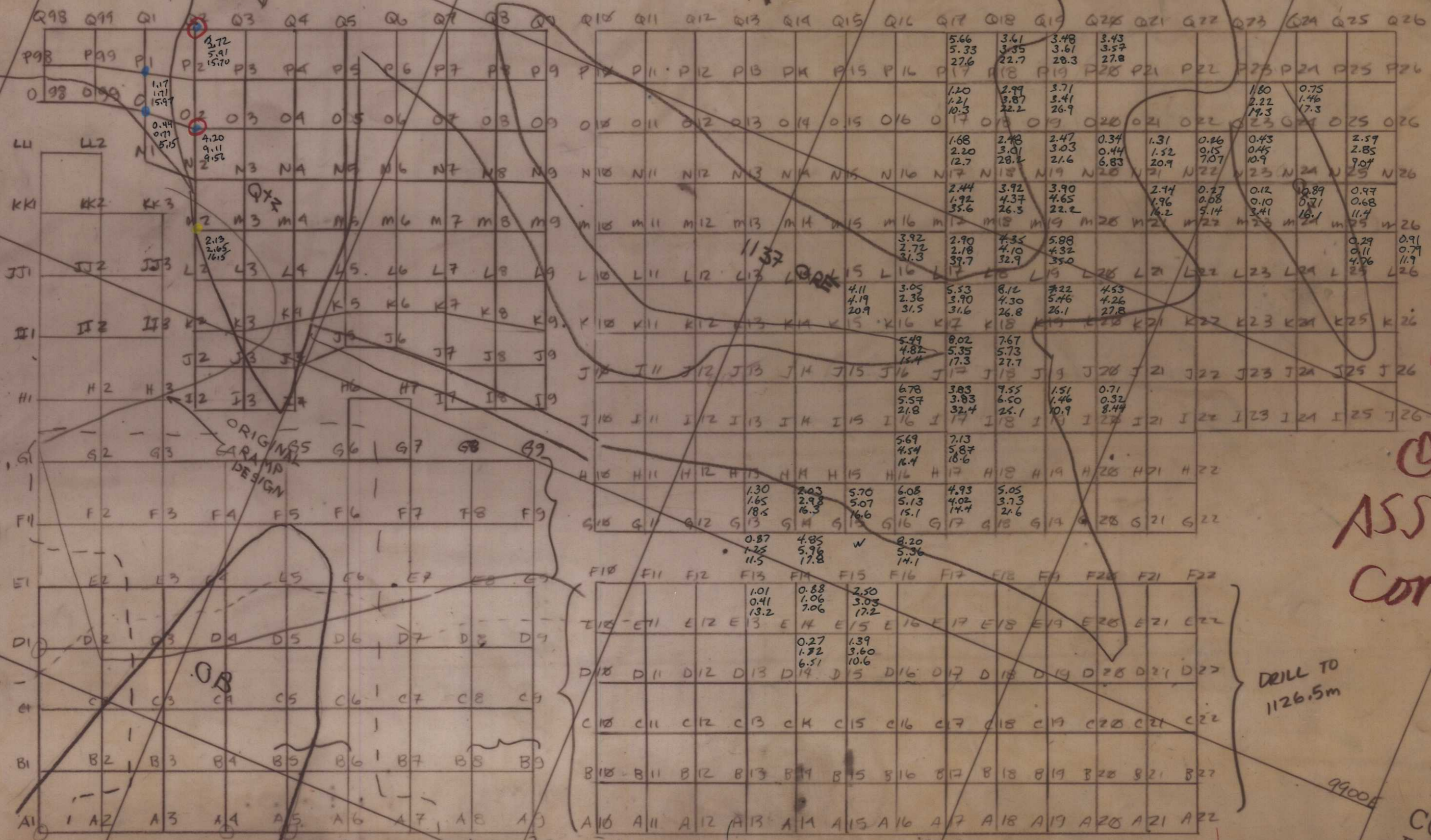


11

6.5 x 6.5

6.5 x 6.5m

1134 A/B



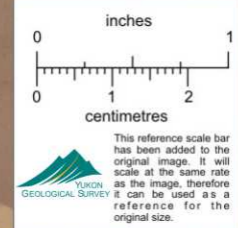
1134 A/B

Office  
ASSAY  
COPY

DRILL TO 1126.5m

1134

6.5 x 6.5m



DRILL TO 1126.5m

DRILL TO 1126.5m

DRILL TO 1126.5m

MAY NOT HAVE TO

PATTERN: 8  
 BIT SIZE: 0.27m  
 SUBGRADE: 1.5  
 EXPLOSIVES: B9  
 COLLAR: 5.0 m  
 DELAYS: (except on Ramp Grad)  
 DRILL TO

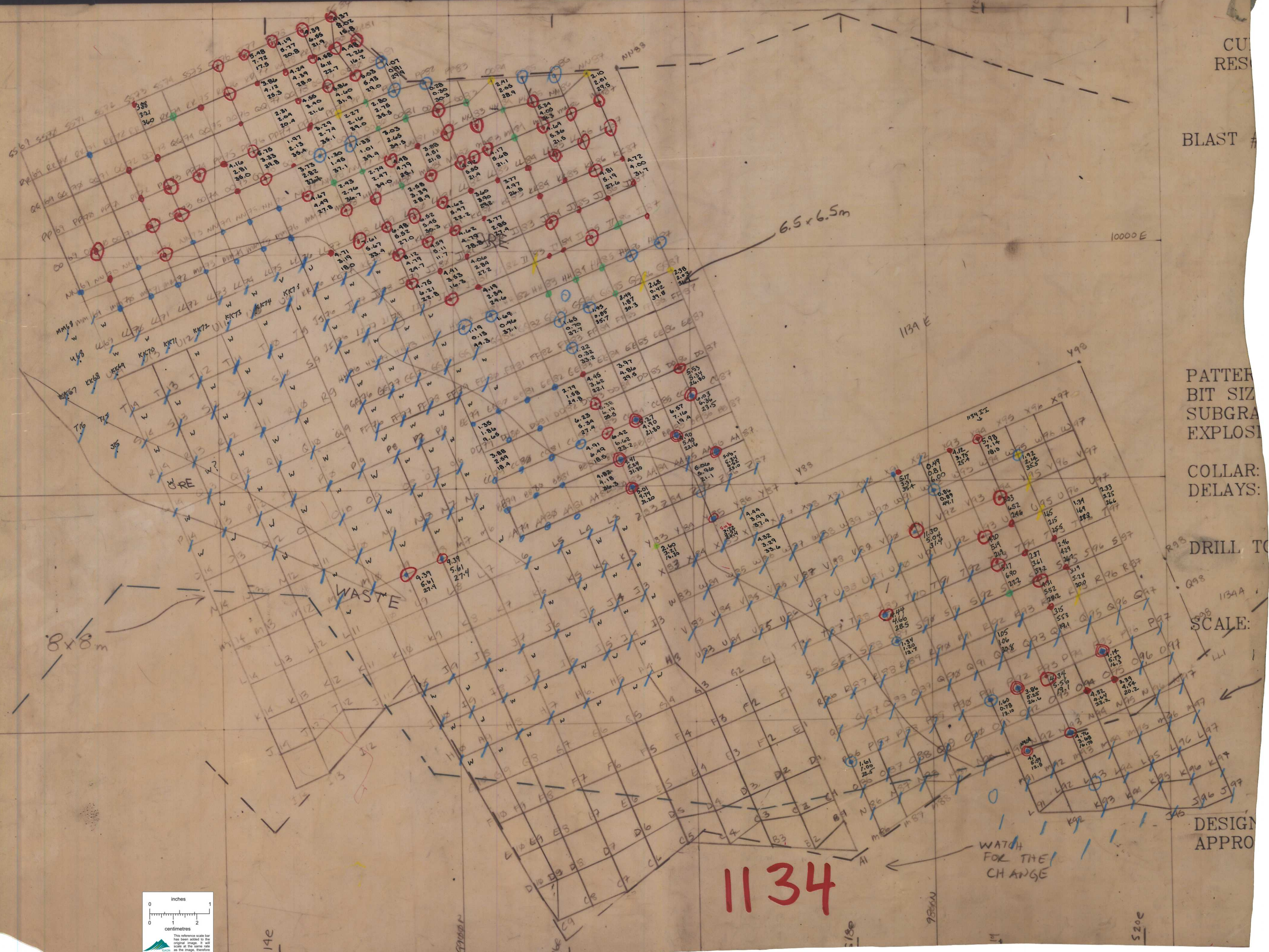
114010E

114010E

7750N

BLA





BLAST #

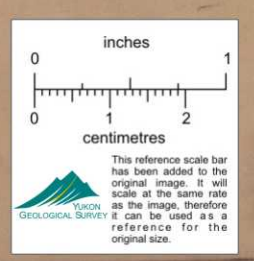
PATTER  
BIT SIZE  
SUBGRA  
EXPLOS

COLLAR:  
DELAYS:

DRILL TO

SCALE:

DESIGN  
APPRO



1134

514e

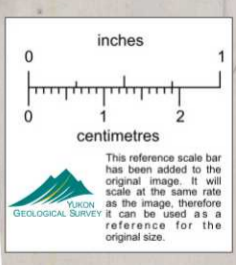
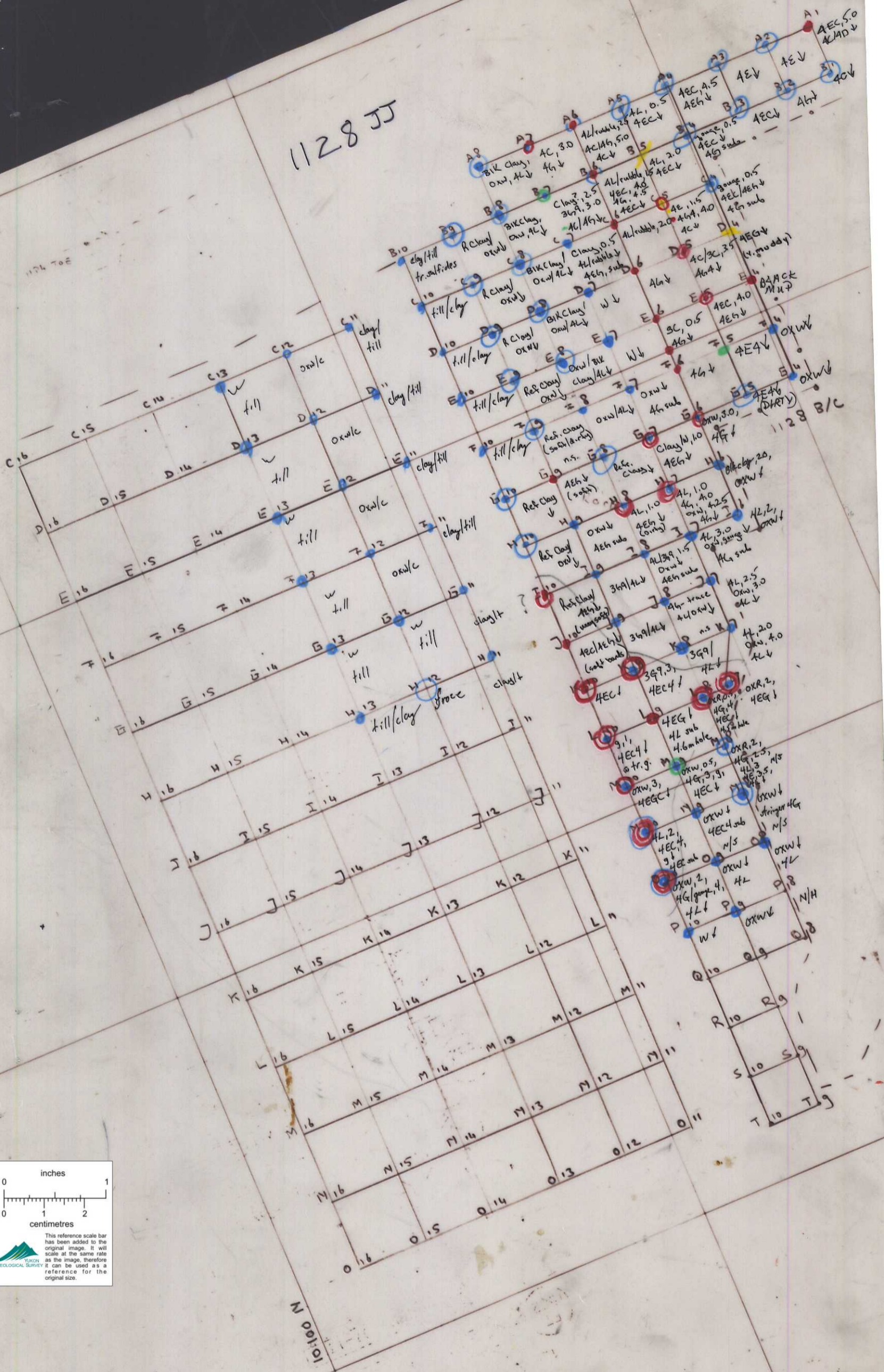
520c





1128 JJ

1174 TOE



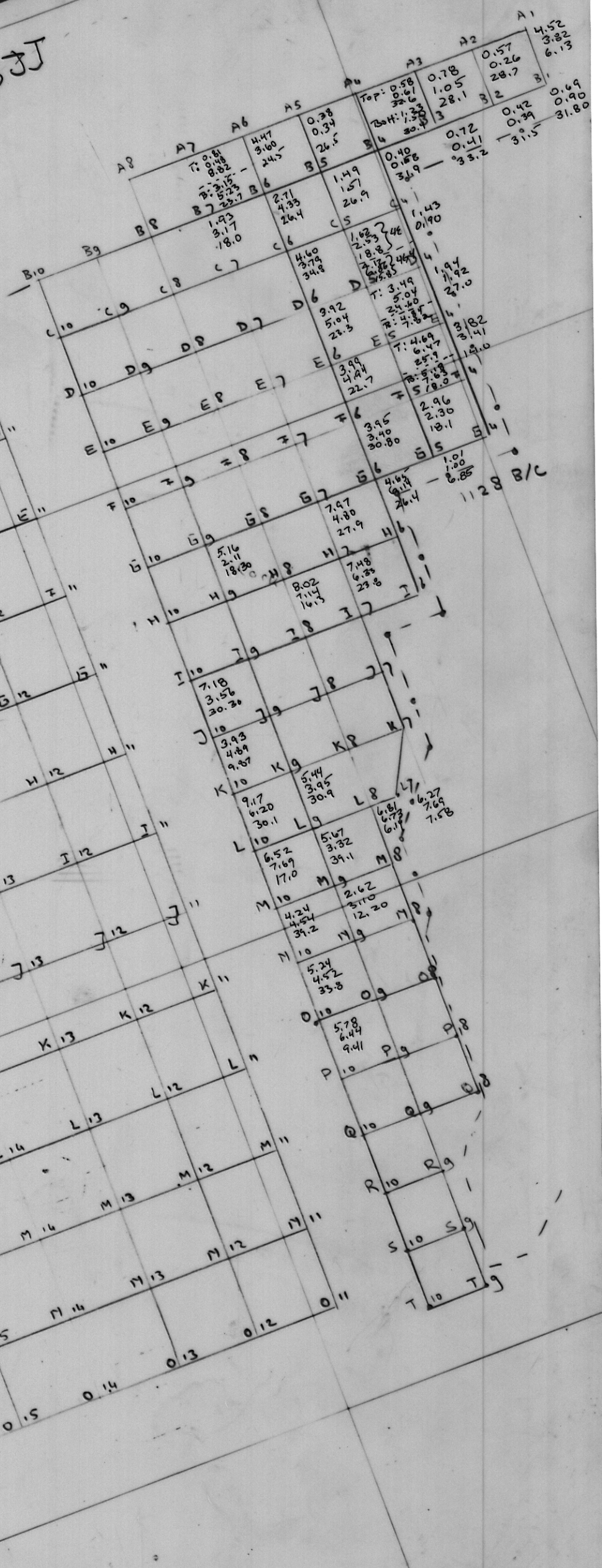
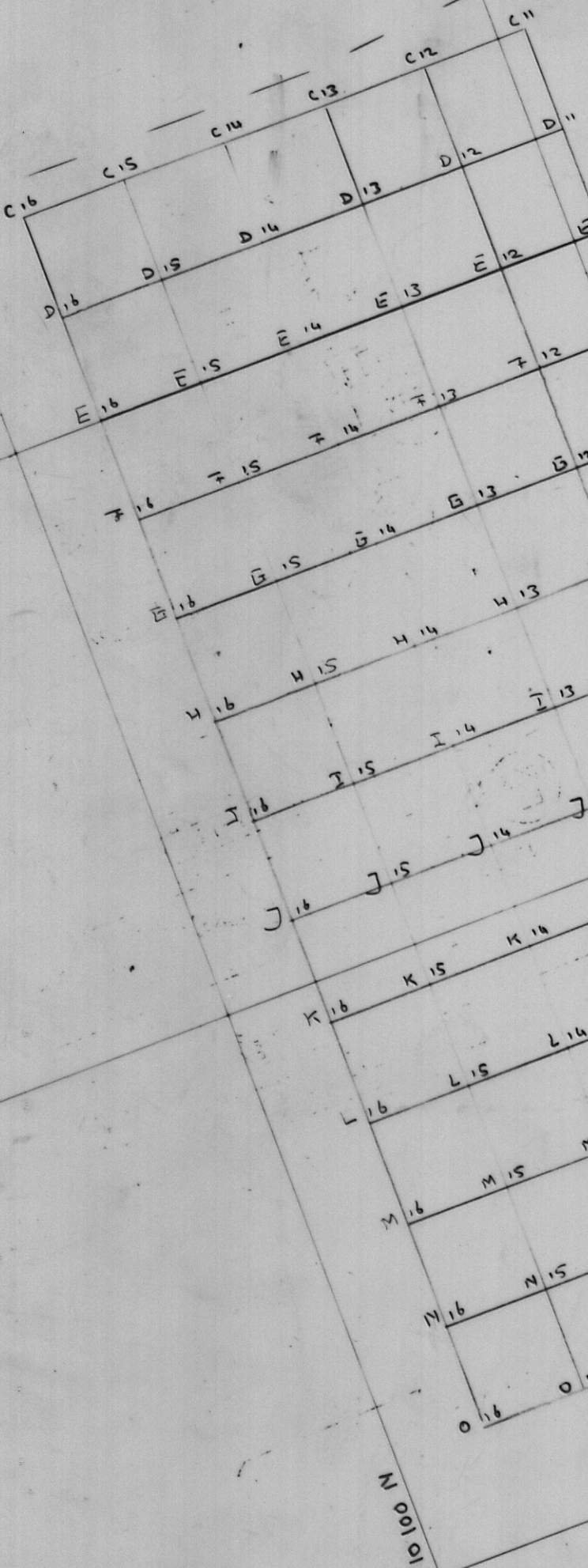
9950E

10100 N

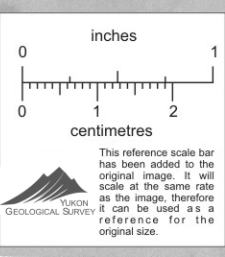
1128 B/C

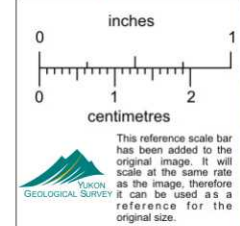
1128JJ

1124 70E

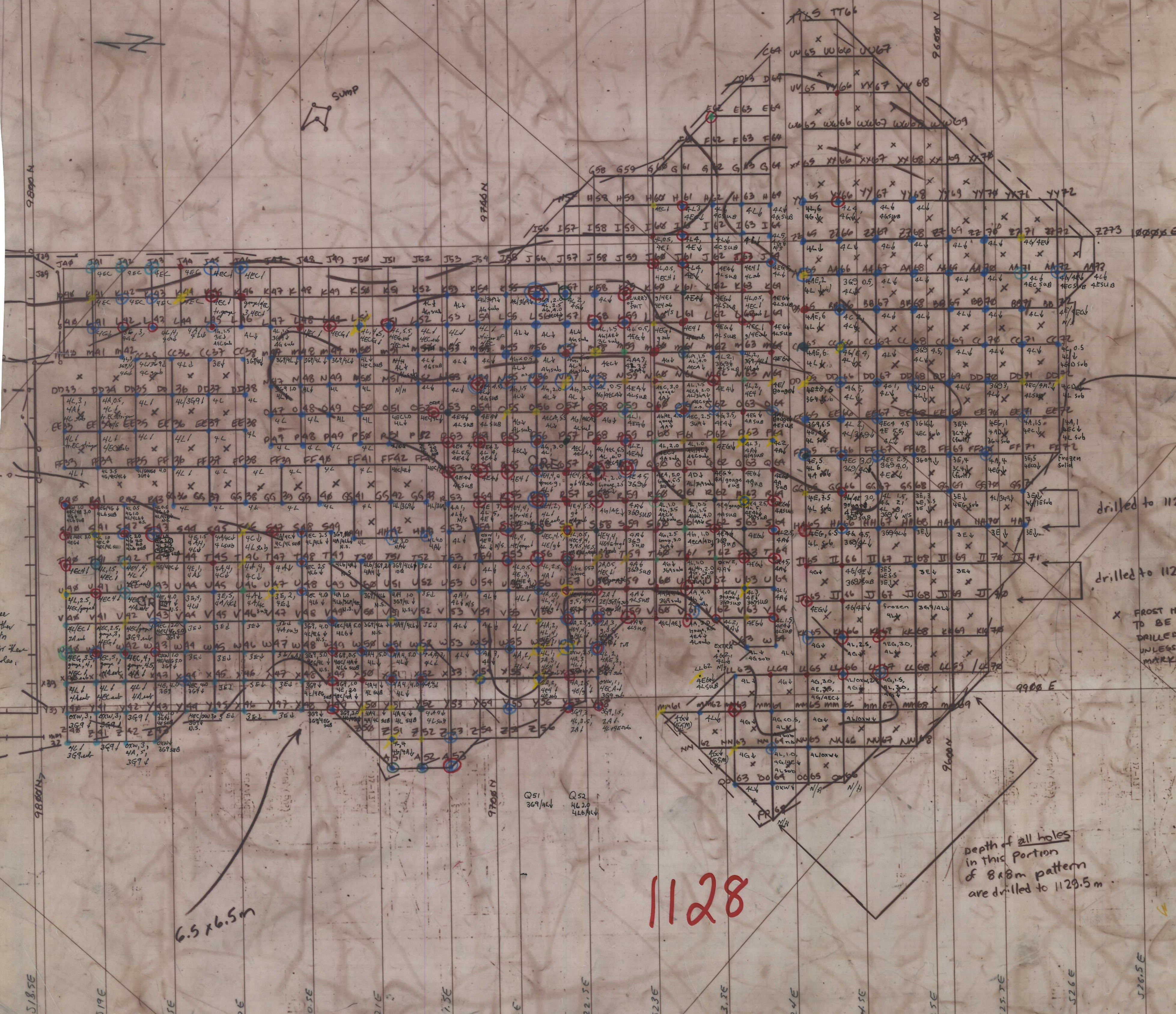
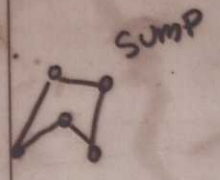


950E





# SOUTH V1128 LITHO PLAN FEB 1991



6.5 x 6.5m

# 1128

depth of all holes in this portion of 8x8m pattern are drilled to 1128.5m

drilled to 1127m

drilled to 1128m

X FROST HOLES TO BE STAMP DRILLED TO UNLESS OTHERWISE MARKED

see plan for flow lines

9800N

9780N

518.5E

519E

519.5E

520E

520.5E

521E

521.5E

522E

522.5E

523E

523.5E

524E

524.5E

525E

525.5E

526E

526.5E

9900E

9600N

9600N

9600N

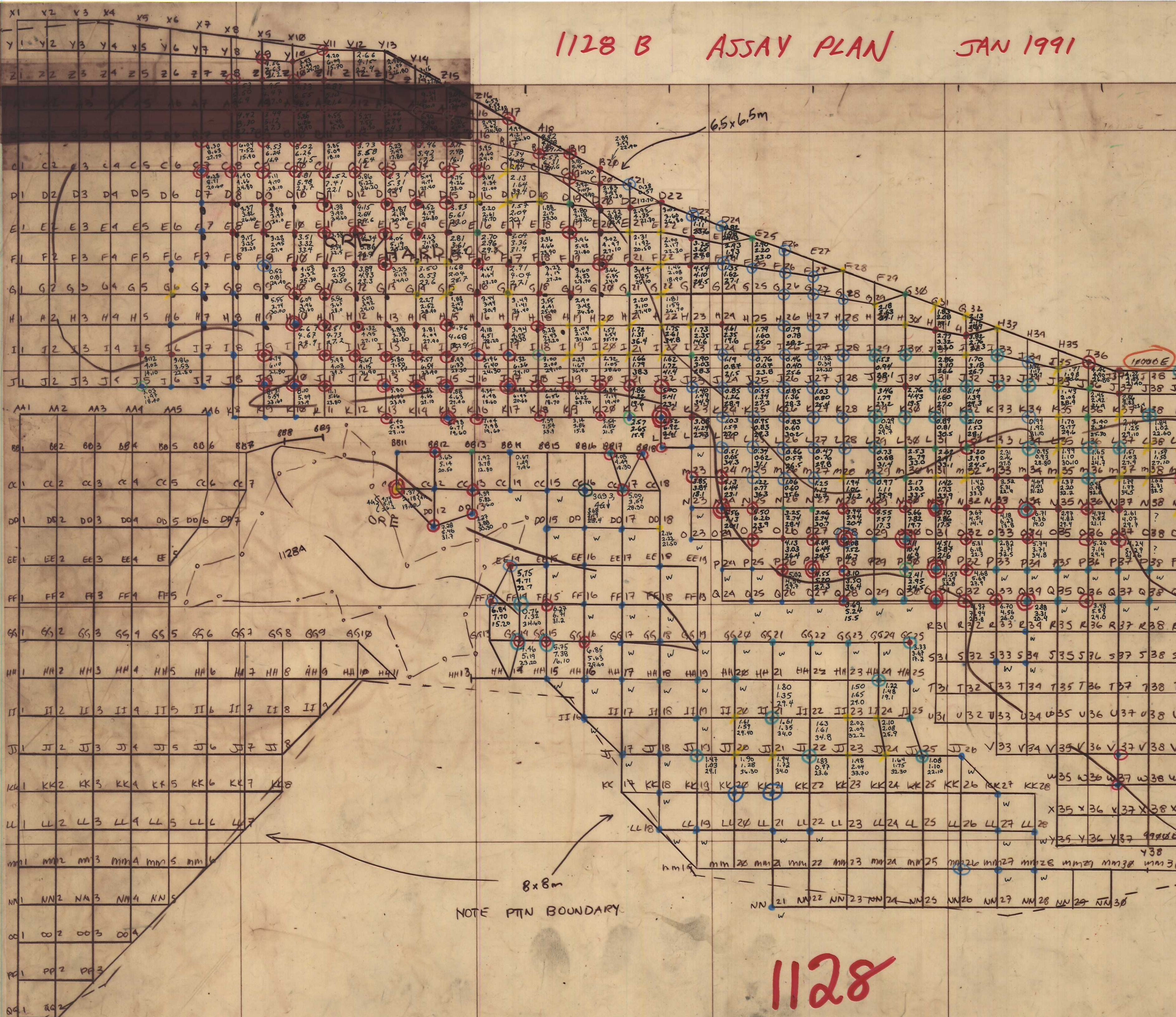
9600N

9600N

# 1128 B ASSAY PLAN JAN 1991

CURRAGH RESOURCES

BLAST #: 1128 B/c

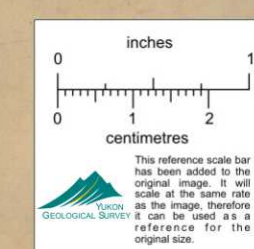


PATTERN: 8x8m  
BIT SIZE: 0.227m  
SUBGRADE: 1.5m  
EXPLOSIVES: B90088

COLLAR: 4.5m  
DELAYS:

DRILL TO: 1126.5m

SCALE: 1:500



NOTE PTIN BOUNDARY

# 1128

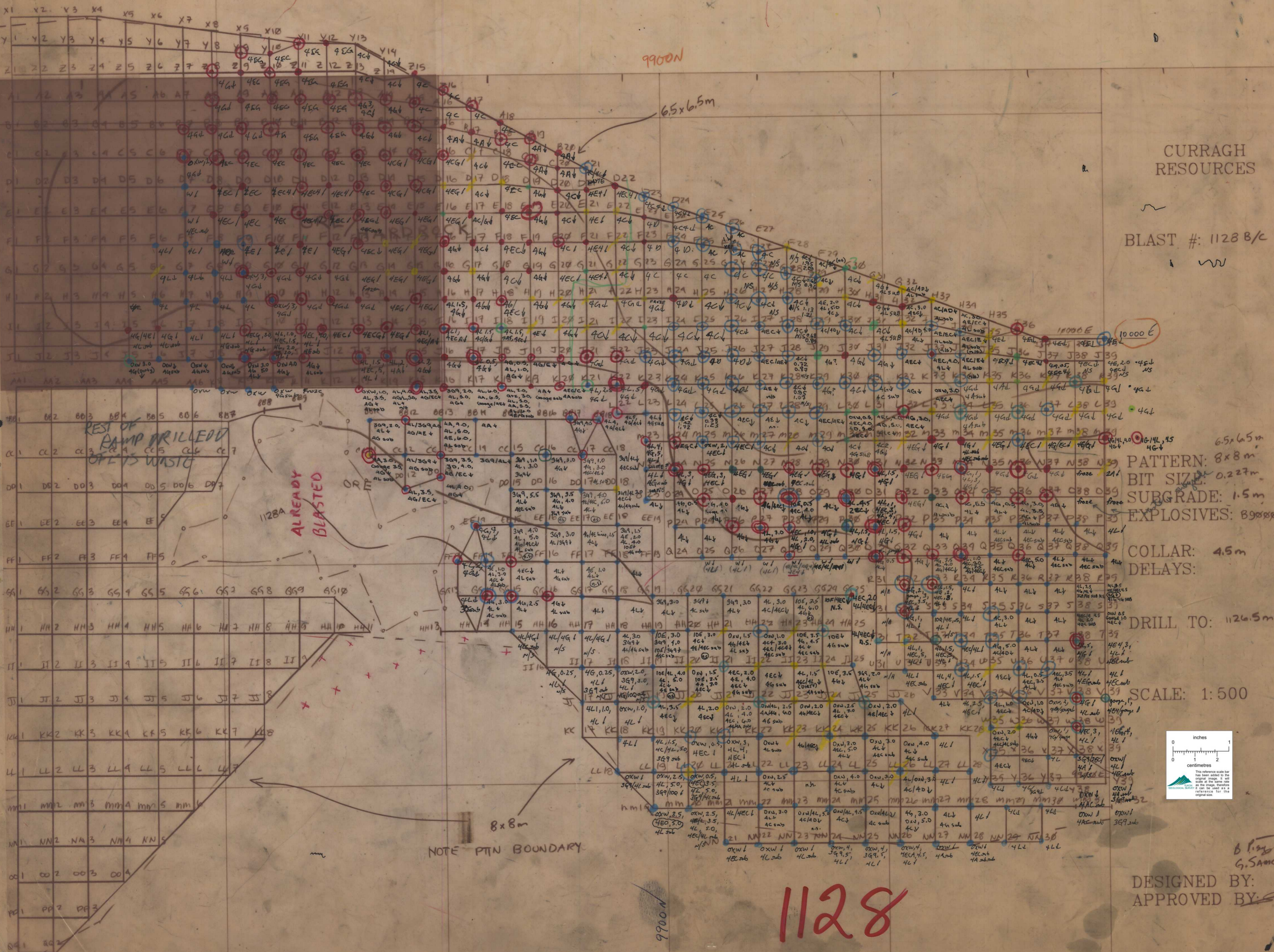
DESIGNED BY:  
APPROVED BY:

B. P. G. Sanchez

Added 12/28/98

1128  
Litho Master

1186



CURRAGH  
RESOURCES

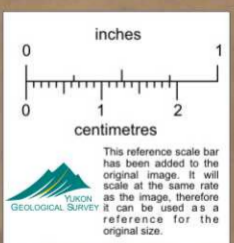
BLAST #: 1128 B/C

PATTERN: 8x8m  
BIT SIZE: 0.227m  
SUBGRADE: 1.5m  
EXPLOSIVES: 89000

COLLAR: 4.5m  
DELAYS:

DRILL TO: 1126.5m

SCALE: 1:500



DESIGNED BY:  
APPROVED BY:

1128

B. P. SANCHEZ  
G. SANCHEZ

UP TO FIT HOLES IN

THESE HOLES ON 1128AA? BENCH



VANGORDA

1134 Litho plan

8m depth (no subgrade) DRILL TO 1134

Looks like ore, almost fall hole, surrounded by waste.

