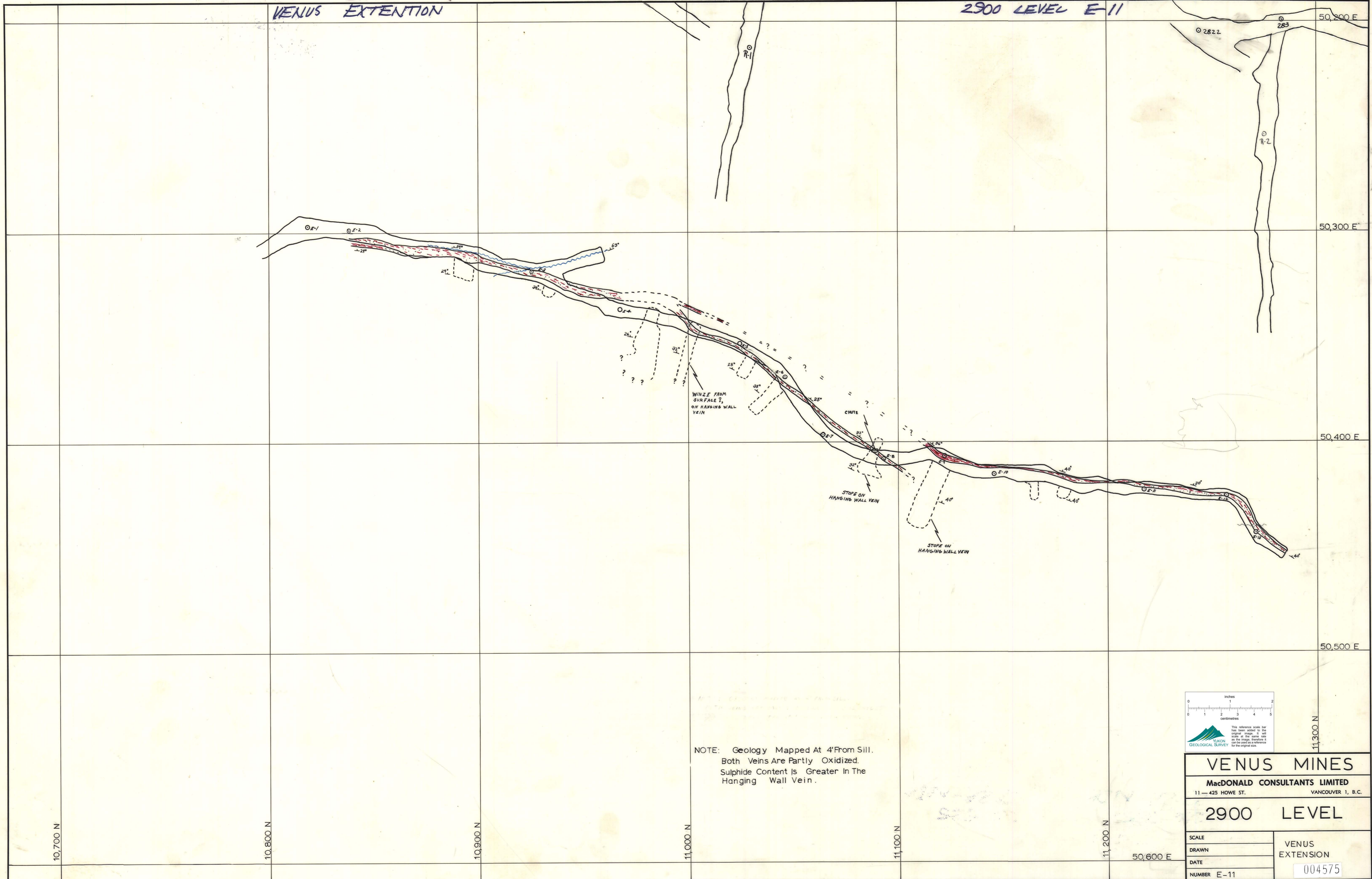
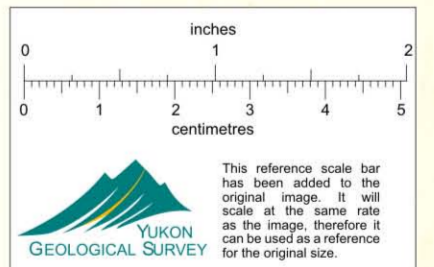


VENUS EXTENTION
VENUS EXTENTION

2900 LEVEL E-11
2900 LEVEL E-11



NOTE: Geology Mapped At 4' From Sill.
Both Veins Are Partly Oxidized.
Sulphide Content Is Greater In The
Hanging Wall Vein.



VENUS MINES	
MacDONALD CONSULTANTS LIMITED 11 - 425 HOWE ST. VANCOUVER 1, B.C.	
2900 LEVEL	
SCALE	VENUS EXTENSION 004575
DRAWN	
DATE	
NUMBER E-11	