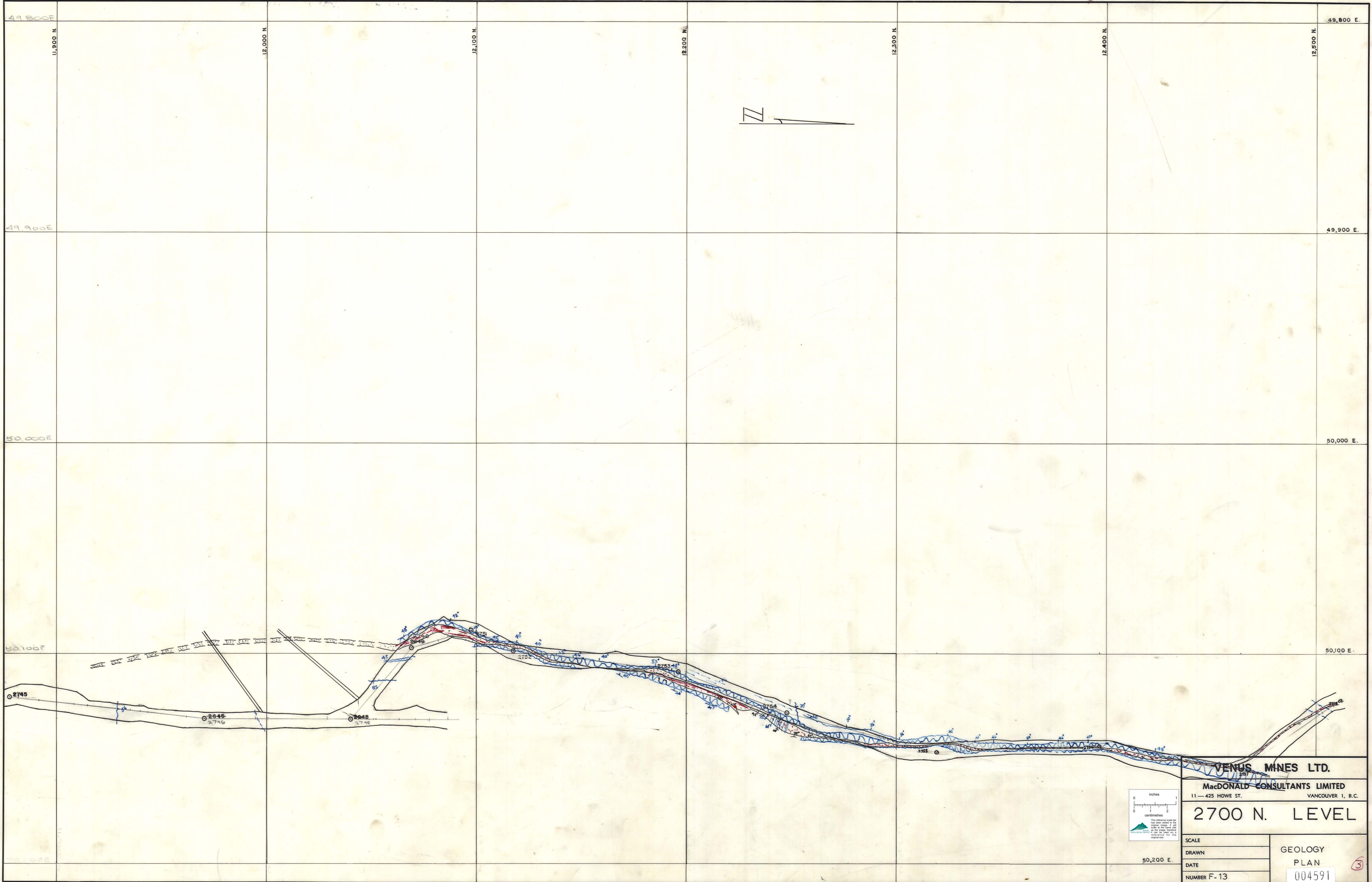


2700 LEVEL F-13

2700 LEVEL F-13



VENUS MINES LTD.
MacDONALD CONSULTANTS LIMITED
 11 - 425 HOWE ST. VANCOUVER 1, B. C.

2700 N. LEVEL

SCALE: 50,200 E.
 DRAWN: _____
 DATE: _____
 NUMBER F-13

GEOLOGY PLAN 004591 (3)

